



The Linergy LED+ is a premium, highly efficient version of the standard Linergy LED, designed to provide the same lumen values whilst using less power.

The Linergy LED+ delivers even greater energy savings with a leading efficiency performance of up to 144 luminaire lumens per circuit watt (144Llm/cW).

The Linergy LED+ closely replicates the familiar mechanical and material specifications of the standard Linergy LED. Additionally, this new range includes a high rack option.

15,000, 23,000 nominal lumen options.

Occupancy and daylight control options.

- Latest LED light engine technology delivers leading power savings - up to 144Llm/cW
- Enhanced Capital Allowance (ECA) Compliance across the complete range
- Four light distribution models are available; wide area, narrow, rack and high rack.
- Integral emergency available which allows mounting to a maximum height of 20m
- Low, mid and high bay integral programmable occupancy detector variants available to maximise performance and coverage
- DALI dimming options available for increased comfort, lighting control and energy savings
- Wire guard option for increased security in environments where impact resistance is needed

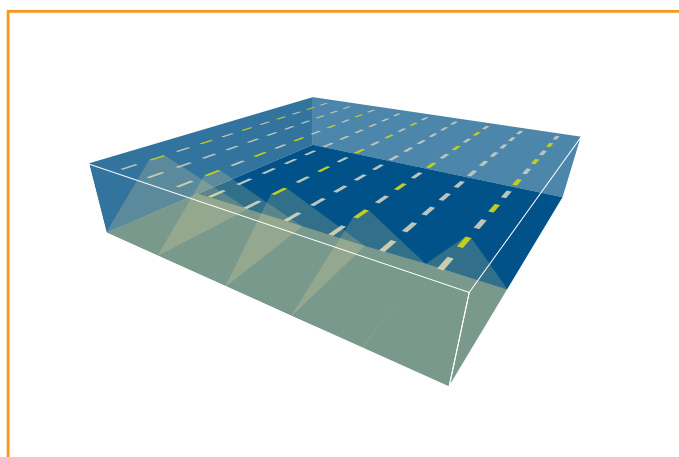
Emergency operation

Linergy LED+ has the option of an integral emergency built centrally into the body of the luminaire. Utilising the efficient Eaton optical system, capital and installation costs are reduced with class leading spacings achievable. Two variants allow for maximised utilisation in the space, up to 10m mounting height and up to 20m mounting height.

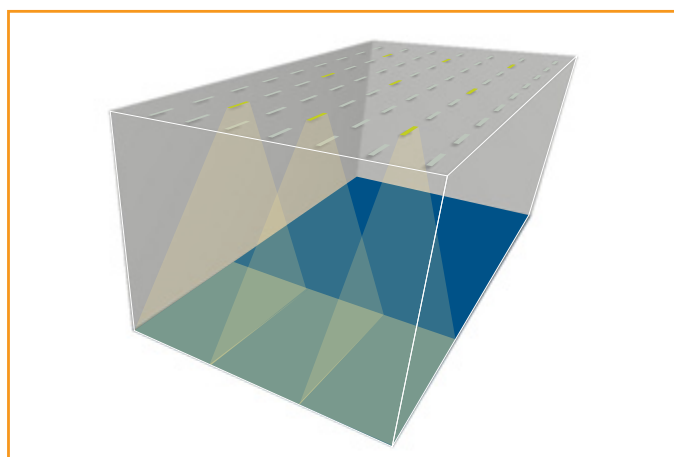
For applications to 10m mounting height, the optic distribution is a square footprint allowing the designer scope for achieving compliance with reduced quantities of emergency points.

Applications with mounting heights above this, up to 20m, the optic is utilised to be elongated in one plane. This allows optimum spacing, following the linear installation direction.

For application mounting heights of up to 10m the standard variant should be used, the prefix is 'ELL'. Emergency operation for mounting heights up to 20m, the prefix 'ELH' should be used. See the catalogue numbers for more detail.



10m mounting height - square distribution



20m mounting height - elongated linear distribution

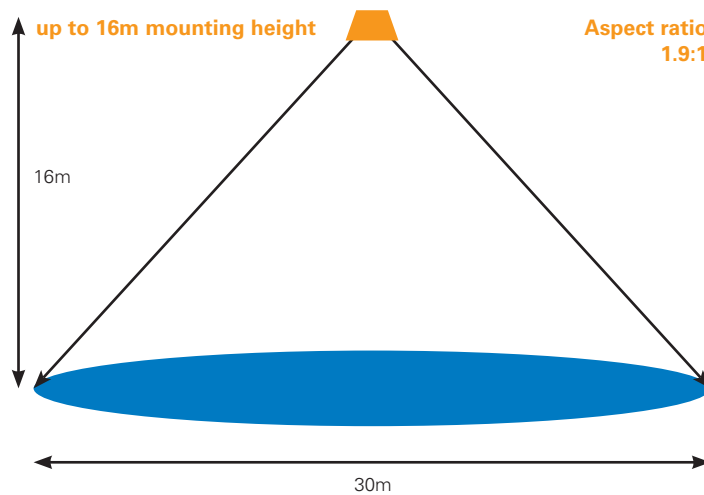
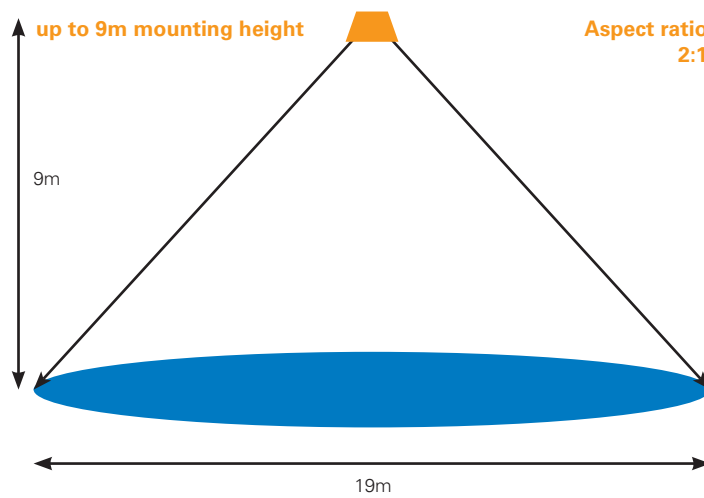
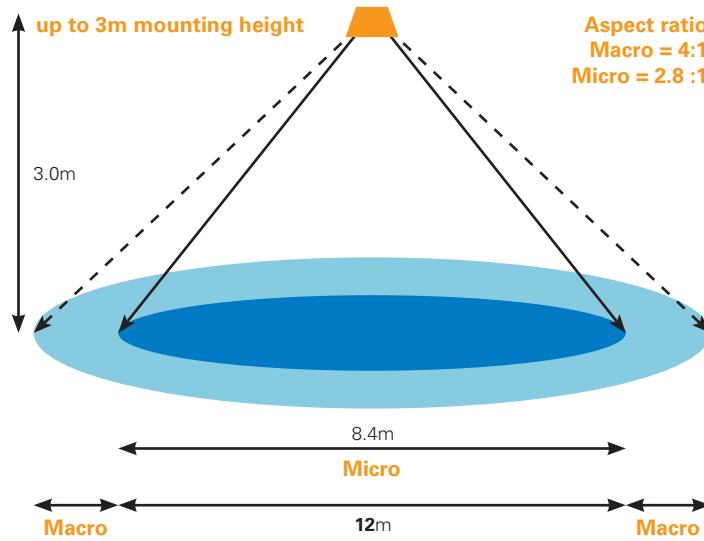
Detection

Energy saving is key to sustainable buildings and businesses. By adopting a clear strategy for managing the occupancy and absence of a space, significant savings may be achieved in energy usage. Application dependent, savings against constant illumination can be up to 70%.

Standard high frequency PIRs have a daylight linking function, with thresholds determinable by the user, as well as a switching function. In DALI luminaires, the PIRs have a daylight linking function, with thresholds determinable by the user, as well as a full dimming function.

PIR coverage

Linery LED+ offers three standard options for PIR detection mounting heights. Up to 3 metres, 9 metres and 16 metres. The 3m detector boasts a high sensitivity micro detection range. The aspect ratios and coverage are shown on the diagrams to aid in scheme design.



Industrial

Linergy LED+

Accessories

Catalogue Numbers

Description	Cat No
Wire guard* - 1200lm	LNLWG4
Wire guard* - 1800lm	LNLWG6
Infrared user controller	LCSQC
Infrared programmer	LCSQS
Digital 2 way programmer	LCSQSP
Rear mounting brackets	LNLMB

*Unavailable for high rack

Luminaire efficiency

Variant	Lumen output	Wattage (w)	Llm/cW
Wide Area			
LNPA1504KZ	15144	107	142
LNPA2254KZ	22875	168	136
Narrow			
LNPN1504KZ	15422	107	144
LNPN2254KZ	22996	167	137
Rack			
LNPR1504KZ	14597	107	136
LNPR2254KZ	23109	170	136
High Rack			
LNPHR1504KZ	14481	107	135
LNPHR2254KZ	22537	165.5	136



Digital 2 way programmer



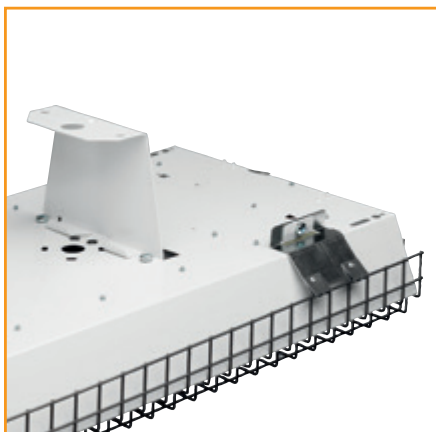
Infrared programmer



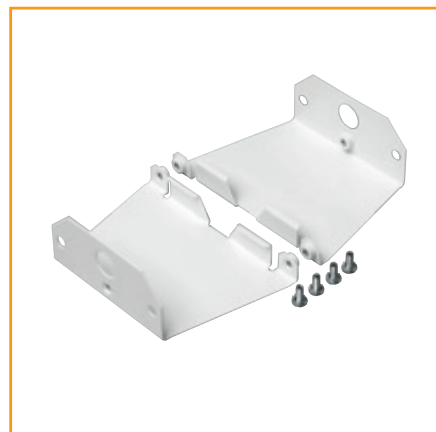
Infrared user controller



Wire guard (not available with high rack)



Mounting bracket detail



Rear mounting brackets

Catalogue Numbers

Lumen Output (lm)	Optic	Cat No.	Weight (Kg)	Emergency Cat No.	Weight (Kg)
Standard Luminaires					
1200mm	Wide area Reflector	LNPA1504KZ	5.5	ELLNPA1504KZ	6.2
1800mm	Wide area Reflector	LNPA2254KZ	8.1	ELLNPA2254KZ	9
1200mm	Narrow Reflector	LNPN1504KZ	5.5	ELLNPN1504KZ	6.2
1800mm	Narrow Reflector	LNPN2254KZ	8.1	ELLNPN2254KZ	9
1200mm	Rack Reflector	LNPR1504KZ	5.7	ELLNPR1504KZ	6.4
1800mm	Rack Reflector	LNPR2254KZ	8.2	ELLNPR2254KZ	9.1
1200mm	High Rack Reflector	LNPHR1504KZ	10.6	ELLNPHR1504KZ	10.6
1800mm	High Rack Reflector	LNPHR2254KZ	12.1	ELLNPHR2254KZ	12.1
Emergency Luminaire - for mounting heights up to 20m					
1200mm	Wide area Reflector			ELHLNPA1504KZ	6.2
1800mm	Wide area Reflector			ELHLNPA2254KZ	9
1200mm	Narrow Reflector			ELHLNPN1504KZ	6.2
1800mm	Narrow Reflector			ELHLNPN2254KZ	9
1200mm	Rack Reflector			ELHLNPR1504KZ	6.4
1800mm	Rack Reflector				
1200mm	High Rack Reflector			ELHLNPHR1504KZ	10.6
1800mm	High Rack Reflector			ELHLNPHR2254KZ	12.1
Luminaire with switching high level sensor (up to 16m mounting height)					
1200mm	Wide area Reflector	ULNPA1504KZ	5.7	ELULNPA1504KZ	6.4
1800mm	Wide area Reflector	ULNPA2254KZ	8.5	ELULNPA2254KZ	9.4
1200mm	Narrow Reflector	ULNPN1504KZ	5.7	ELULNPN1504KZ	6.4
1800mm	Narrow Reflector	ULNPN2254KZ	8.5	ELULNPN2254KZ	9.4
1200mm	Rack Reflector	ULNPR1504KZ	5.9	ELULNPR1504KZ	6.6
1800mm	Rack Reflector	ULNPR2254KZ	8.6	ELULNPR2254KZ	9.5
1200mm	High Rack Reflector	ULNPHR1504KZ	10.8	ELULNPR1504KZ	10.8
1800mm	High Rack Reflector	ULNPHR2254KZ	12.5	ELULNPR2254KZ	12.5
Luminaire with switching high level sensor (up to 9m mounting height)					
1200mm	Wide area Reflector	MLNPA1504KZ	5.7	ELMLNPA1504KZ	6.4
1800mm	Wide area Reflector	MLNPA2254KZ	8.5	ELMLNPA2254KZ	9.4
1200mm	Narrow Reflector	MLNPN1504KZ	5.7	ELMLNPN1504KZ	6.4
1800mm	Narrow Reflector	MLNPN2254KZ	8.5	ELMLNPN2254KZ	9.4
1200mm	Rack Reflector	MLNPR1504KZ	5.9	ELMLNPR1504KZ	6.6
1800mm	Rack Reflector	MLNPR2254KZ	8.6	ELMLNPR2254KZ	9.5
1200mm	High Rack Reflector	MLNPHR1504KZ	10.8	ELMLNPHR1504KZ	10.8
1800mm	High Rack Reflector	MLNPHR2254KZ	12.5	ELMLNPHR2254KZ	12.5
Luminaire with switching high level sensor (up to 3m mounting height)					
1200mm	Wide area Reflector	CLNPA1504KZ	5.7	ELCLNPA1504KZ	6.4
1800mm	Wide area Reflector	CLNPA2254KZ	8.5	ELCLNPA2254KZ	9.4
1200mm	Narrow Reflector	CLNPN1504KZ	5.7	ELCLNPN1504KZ	6.4
1800mm	Narrow Reflector	CLNPN2254KZ	8.5	ELCLNPN2254KZ	9.4
1200mm	Rack Reflector	CLNPR1504KZ	5.9	ELCLNPR1504KZ	6.6
1800mm	Rack Reflector	CLNPR2254KZ	8.6	ELCLNPR2254KZ	9.5
1200mm	High Rack Reflector	CLNPHR1504KZ	10.8	ELCLNPHR1504KZ	10.8
1800mm	High Rack Reflector	CLNPHR2254KZ	12.5	ELCLNPHR2254KZ	12.5

For DALI dimming option, replace part number character Z with DD, e.g. LNPA1504KZ becomes LNPA1504KDD