


The advances in fluorescent lighting technology saw the birth of the successful Linergy family of industrial fluorescent luminaires, this helped realise significant energy savings against traditional discharge solutions in manufacturing, retail, sports hall and warehouse applications. Linergy II continues to embrace the further advances in T5 fluorescent lamp technology with the 73W lamp which provides even greater lumens per watt, aiding the global commitment to reduce the energy used by lighting in commercial buildings. In addition the range grows with an advanced rack reflector option with focused vertical illumination and enclosed versions for areas such as food preparation that require lamp shatter protection.

- Low energy fluorescent alternative to discharge lowbay and highbay luminaires
- Latest 73W T5 lamp option, with 10% less consumed energy than 80W T5
- Advanced optical design for optimum energy efficiency - 82.6 lm/cw (LNA473Z)
- Enhanced Capital Allowance (ECA) compliance across the range
- Purpose designed rack reflector option for focused vertical illumination
- Integral occupancy detector with photocell options maximise energy saving benefits
- Enclosed panel option for lamp and application area protection
- Integral self test emergency available

### Lamp and Control Gear Options

- 49W (HO), 73W (HO) T5 fluorescent,  4000°K - G5 Cap
- Energy efficient high frequency control gear as standard
- DALI Dimming options available

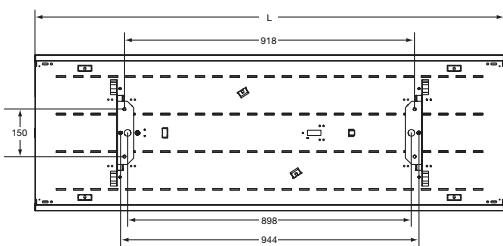
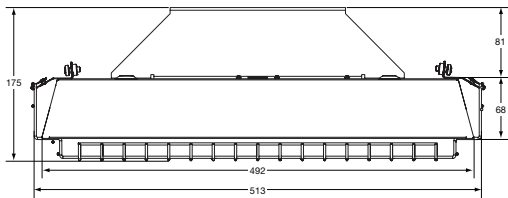
### Materials

- Body - Full box steel construction powder coated in RAL9016 white finish
- Reflectors - Satin finish, zero iridescence anodised aluminium
- Panel - 3mm clear acrylic
- Wire guard - Heavy duty zinc plated steel, 25mm grid size

### Installation Notes

- Suitable for ceiling, conduit, chain, rod and trunking mounting
- Quick fit mounting brackets fix to mounting surface (supplied)
- Supplied with reflectors and lamps pre-fitted, no need to remove during installation
- Enclosed IP20 clear panel option supplied complete with panel installed. Panel is secured with tool-less fixings and slides out for ease of maintenance
- Panel mount plug and socket for quick electrical connection
- Fused as standard
- Wire guard is a retrofit accessory secured by screws, hangs for ease of maintenance
- Supplied complete with lamps

### Dimensions



Option	L (mm)
4 x 49W/73W	1484
4 x 49W/73W with detector	1604

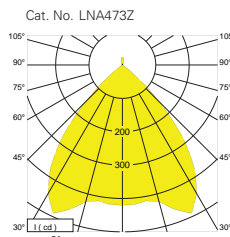
### Options

- Fully integral emergency conversion, 3 hour duration
- Emergency versions available with automatic test functionality, reducing maintenance costs and offers ease of compliance with testing requirements
- Suitable for use on defined escape routes
- Wide area and rack reflector options provide efficient optics relevant to the task
- Enclosed clear acrylic panel option protects areas from lamp shatter
- Lighting control and energy management options including integrated occupancy and daylight detectors for up to 16m heights
- Top cowl for sports hall applications available to special order

### Specification

To specify state: Surface mounted, high/low bay luminaire, of full box welded construction with post coat powder paint finish, high performance satin reflectors for wide area/rack aisle, quick fit plug and socket connector and T5 high output lamps with integrated sensor / clear panel / protective wire guard options, as Eaton's Linery II range, part no. \_\_\_\_\_

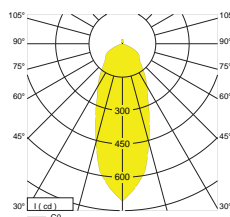
### Photometric Data



Cat. No. LNA473Z  
 LOR: 0.99  
 ULOR: 0.03  
 DLOR: 0.96

SHR nom: 1.00  
 SHR max: 1.19

Cat. No. LNR473Z



LOR: 0.98  
 ULOR: 0.03  
 DLOR: 0.95

SHR nom: 0.75  
 SHR max: 0.80

Utilisation factors / TM5

Reflectances			Room Index								
C	W	F	0.75	1.0	1.25	1.5	2.0	2.5	3.0	4.0	5.0
70	50	20	62	73	80	85	91	95	98	102	104
	30		55	66	74	79	86	91	94	99	101
	10		50	61	69	74	82	87	91	96	99
50	50	20	61	71	77	82	88	92	94	98	100
	30		54	65	72	77	84	88	91	95	97
	10		50	61	68	73	80	85	88	93	96
30	50	20	59	69	75	79	85	88	91	94	96
	30		54	64	70	75	81	85	88	92	94
	10		49	60	67	72	78	83	86	90	92
0	0	0	47	57	64	68	75	79	81	85	87
BZ-class			3	3	3	3	3	2	3	3	2

See page 514 for Design Guide

Utilisation factors / TM5

Reflectances			Room Index								
C	W	F	0.75	1.0	1.25	1.5	2.0	2.5	3.0	4.0	5.0
70	50	20	62	71	78	82	89	93	96	100	103
	30		55	64	71	76	84	89	92	97	100
	10		50	59	66	72	80	85	89	94	97
50	50	20	60	69	75	79	86	90	92	96	98
	30		54	63	70	74	81	86	89	93	96
	10		49	58	65	70	78	82	86	91	94
30	50	20	58	67	73	77	82	86	89	92	94
	30		53	62	68	73	81	83	86	90	92
	10		49	58	64	69	76	80	83	88	90
0	0	0	47	55	61	66	72	76	79	83	85
BZ-class			3	3	3	3	3	3	3	3	3

See page 514 for Design Guide



Integral sensor option

### Catalogue Numbers

Lamp Rating	Optic	Cat No	Weight (kg)	Emergency Cat No	Weight (kg)
<b>Open luminaire</b>					
4x49W	Wide Area Reflector	LNA449Z	10.6	EBLNA449Z	11.2
4x73W	Wide Area Reflector	LNA473Z	10.6	EBLNA473Z	11.2
4x49W	Rack Reflector	LNR449Z	10.6	EBLNR449Z	11.2
4x73W	Rack Reflector	LNR473Z	10.6	EBLNR473Z	11.2
<b>Enclosed luminaire (fitted with clear panel)</b>					
4x49W	Wide Area Reflector	LNAP449Z	12.9	EBLNAP449Z	14.2
4x73W	Wide Area Reflector	LNAP473Z	12.9	EBLNAP473Z	14.2
4x49W	Rack Reflector	LNRP449Z	12.9	EBLNRP449Z	14.2
4x73W	Rack Reflector	LNRP473Z	12.9	EBLNRP473Z	14.2
<b>Open luminaire with switching High Level Detector (up to 16m heights)</b>					
4x49W	Wide Area Reflector	IHPLNA449Z	11.5	EBIHPLNA449Z	12.1
4x73W	Wide Area Reflector	IHPLNA473Z	11.5	EBIHPLNA473Z	12.1
4x49W	Rack Reflector	IHPLNR449Z	11.5	EBIHPLNR449Z	12.1
4x73W	Rack Reflector	IHPLNR473Z	11.5	EBIHPLNR473Z	12.1
<b>Enclosed luminaire with switching High Level Detector (fitted with clear panel - up to 16m heights)</b>					
4x49W	Wide Area Reflector	IHPLNAP449Z	13.8	EBIHPLNAP449Z	15.1
4x73W	Wide Area Reflector	IHPLNAP473Z	13.8	EBIHPLNAP473Z	15.1
4x49W	Rack Reflector	IHPLNRP449Z	13.8	EBIHPLNRP449Z	15.1
4x73W	Rack Reflector	IHPLNRP473Z	13.8	EBIHPLNRP473Z	15.1
<b>Open luminaire with switching Medium Level Detector (up to 12m heights)</b>					
4x49W	Wide Area Reflector	IMPLNA449Z	11.5	EBIMPLNA449Z	12.1
4x73W	Wide Area Reflector	IMPLNA473Z	11.5	EBIMPLNA473Z	12.1
4x49W	Rack Reflector	IMPLNR449Z	11.5	EBIMPLNR449Z	12.1
4x73W	Rack Reflector	IMPLNR473Z	11.5	EBIMPLNR473Z	12.1
<b>Enclosed luminaire with switching Medium Level Detector (fitted with clear panel - up to 12m heights)</b>					
4x49W	Wide Area Reflector	IMPLNAP449Z	13.8	EBIMPLNAP449Z	15.1
4x73W	Wide Area Reflector	IMPLNAP473Z	13.8	EBIMPLNAP473Z	15.1
4x49W	Rack Reflector	IMPLNRP449Z	13.8	EBIMPLNRP449Z	15.1
4x73W	Rack Reflector	IMPLNRP473Z	13.8	EBIMPLNRP473Z	15.1

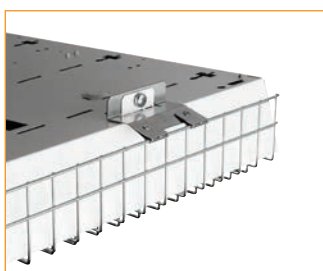
For DALI dimming option, replace part number character Z with DD, e.g. LNA449Z becomes LNA449DD

For DALI dimming with high level dimming detector, replace part number character Z with DD, e.g. IHPLNR473Z becomes IHPLNR473DD

Description	Cat No	Weight (kg)
Wire guard	LNWG	2.8
Wire guard (for use with panel versions)	LNPWG	2.8



Wire guard fitted



Wire guard fixing, hinge detail



Panel secured with end bracket, secured by thumb wheels



Panel slides out for ease of maintenance

