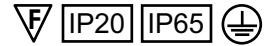


Installation Instructions for: High-Bay Luminaire

- Product luminaires comply with BSEN60598 Class 1.
- For operation in ambient temperatures of -30°C to +30°C.



1 Luminaire Mounting Holes

4 x mounting holes to be drilled in ceiling and a 30mm cable entry aperture

Cable Entry 30mm \varnothing

Mounting holes 9mm \varnothing

288.0mm

144.0mm

57.0mm

443.0mm

Installations utilising the 'rack optic' should be installed with the length of the luminaire running parallel with the length of the aisle.

2 Control Box Mounting

| Mounting Holes | |
|----------------|-------------|
| HBL | 200 x 270mm |
| EBH | 350 x 295mm |

Fix driver box within ceiling space, ensuring it is secured no further than 750mm from cable entry aperture

295 EBH

270 HBL

200 HBL

350 EBH

Max. 750mm

NOTE: A length of conduit is included to protect the cable passing through the ceiling.

3

- 1 Remove cover
- 2 Install power to control box

Ensure mains supply is turned OFF
Wire mains cable into terminal block as shown below:

Standard

Emergency

GEAR BOXES MUST BE EARTHED

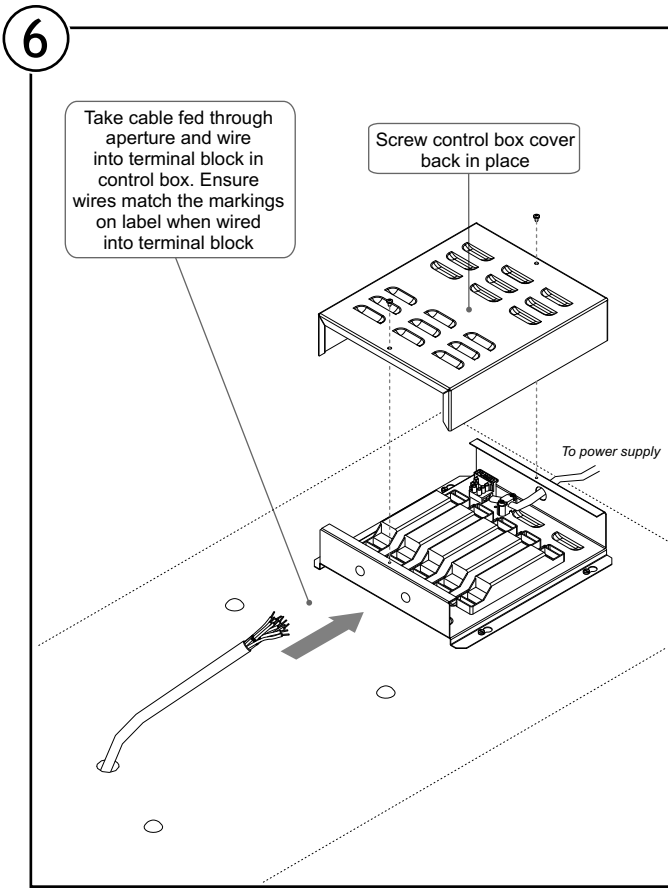
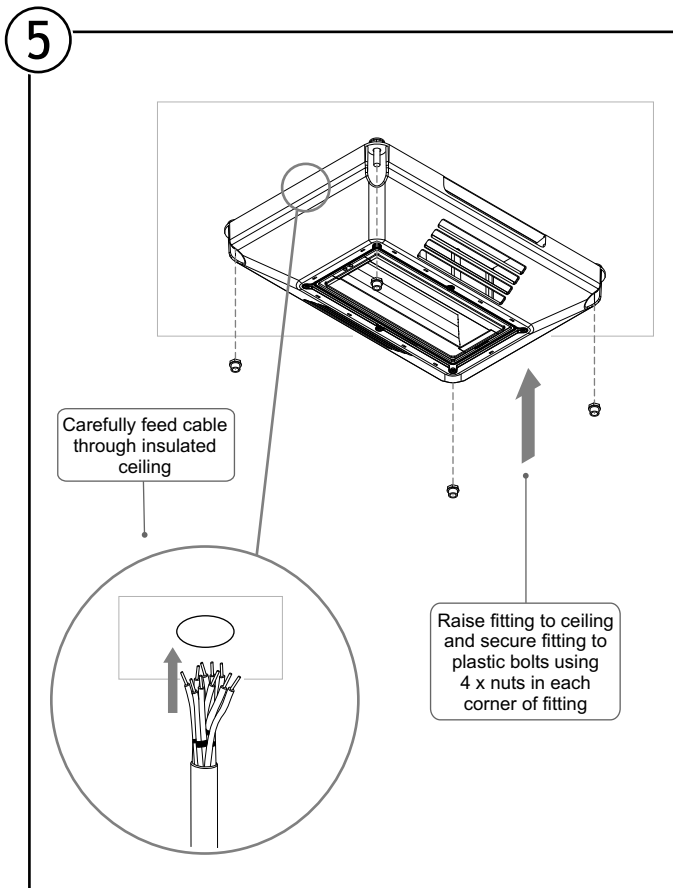
L - Brown (Live)
⊕ - Green/Yellow (Earth)
N - Blue (Neutral)

L2 - Red (Unswitched Live)
L - Brown (Live)
⊕ - Green/Yellow (Earth)
N - Blue (Neutral)

4

Insulated Ceiling

Insert 4 x plastic bolts into mounting holes and fix nut to each bolt to secure in place



Safe Operation

1. Check the rating label for voltage and frequency before connecting this luminaire to the electrical supply.
2. Ensure that the mains supply is switched off when working on this luminaire, whether installing or carrying out any other servicing.
3. Do not mount luminaire on or close to readily flammable materials.
4. To prevent damage to driver, do not mix with conventional magnetic ballasts on the same electrical circuit.
5. Where use in more onerous situations is required, e.g. In part-completed buildings before "drying-out" is completed, or areas where ambient temperatures are outside the normal temperature range, then consult our Sales Office.
6. The light output of the product may cause injuries to human eyes in circumstances where the product is viewed directly with unshielded eyes for more than a few seconds.

Servicing and Disposal

1. At commissioning and handing over of installation ensure that a copy of these instructions is presented to the authority responsible for the operation and maintenance of the luminaires.
2. Servicing, e.g. cleaning, must only be carried out after the electricity supply has been switched off. It must not be assumed that luminaires with lamps not lit are switched off-always check before servicing.
3. Cleaning should be carried out at regular intervals to ensure that dirt does not accumulate to an extent that will impair the thermal safety or optical performance of the luminaire. Regular cleaning will also ensure that the optical performance of the luminaires is maintained.
4. Avoid touching the LED array surface. To clean - Blow surface with either dry air or nitrogen gas.
5. At the end of life the luminaire is classed as WEEE under directive 2002/96/EC and should be disposed of in accordance with local legislation.

Cooper Lighting and Safety Ltd
Wheatley Hall Road, Doncaster, South Yorkshire, DN2 4NB

Sales

T: +44 (0)1302 303303
F: +44 (0)1302 367155
E: sales@cooper-ls.com

General

+44 (0)1302 321541
+44 (0)1302 303220
technical@cooper-ls.com

Major Projects London

+44 (0)1992 787999
+44(0)1992 787222
london@cooper-ls.com

International Sales

+44 (0)1302 303250
+44 (0)1302 303251
export@cooper-ls.com