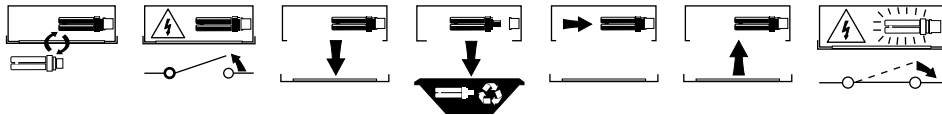
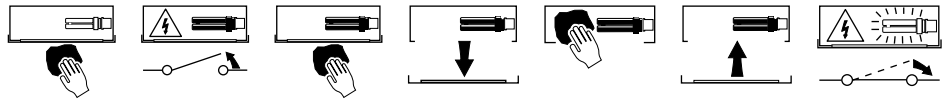


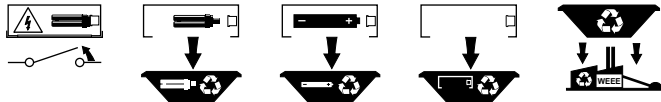
Luminaire Service



Luminaire Cleaning



End of Life and Components Disposal



Safe Operation

1. Check the rating label for voltage and frequency before connecting this luminaire to the electrical supply.
2. Ensure that the mains supply is switched off when working on this luminaire, whether installing, re-lamping or carrying out any other servicing.
3. Use the correct lamps as initially supplied or as indicated on the ballast label.
4. Do not mount luminaire on or close to readily flammable materials.
5. To prevent damage to H.F. ballasts do not mix H.F. and conventional magnetic ballasts on the same electrical circuit.
6. Where use in more onerous situations is required, e.g. In part-completed buildings before "drying-out" is completed, or areas where ambient temperatures are outside the normal temperature range, then consult our Sales Office.

Servicing and Disposal

1. At commissioning and handing over of installation ensure that a copy of these instructions is presented to the authority responsible for the operation and maintenance of the luminaires.
2. Servicing, e.g. cleaning, lamp replacement, must only be carried out after the electricity supply has been switched off. It must not be assumed that luminaires with lamps not lit are switched off-always check before servicing.
3. Cleaning should be carried out at regular intervals to ensure that dirt does not accumulate to an extent that will impair the thermal safety of the luminaire. Regular cleaning will also ensure that the optical performance of the luminaires is maintained.
4. Failed lamps and starter switches must be replaced as soon as practicable by lamps and starters of the same type. For electronic start circuits allow **one minute** for the thermal cut-out to re-set before switching on the mains supply.
5. At the end of life the lamp and luminaire are classed as WEEE under directive 2002/96/EC and should be disposed of in accordance with local legislation.

Eaton Electrical Systems Ltd

Wheatley Hall Road, Doncaster, South Yorkshire, DN2 4NB

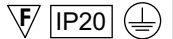
Sales

T: +44 (0)1302 303303
 F: +44 (0)1302 367155
 E:
 LightingSalesUK@eaton.com

Installation Instructions for:

Lechenti

- Product luminaires comply with BSEN60598 Class 1.
- This luminaire has an ambient temperature range of 5°C to 25°C



Testing of insulation resistance in accordance with IEE Regulations, electronic ballast luminaires should be disconnected from supply before insulation resistance testing of wire.

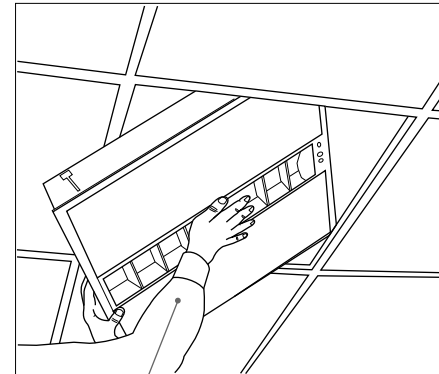
Methods of Fixing Luminaires

To comply with lighting design ensure 600 x 600 luminaires are installed with all lamps in the same direction. Before installation ensure that the ceiling support system is adequate to carry the total luminaire weight.

1

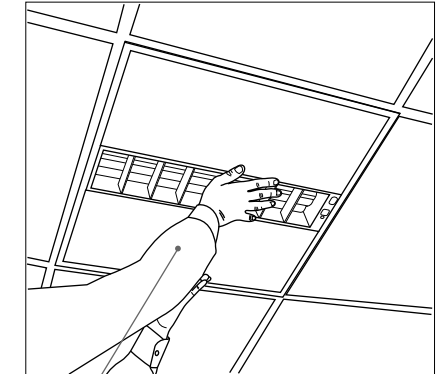
Fitting into Ceiling

Lay-in



Support luminaire using steel frame in middle of luminaire whilst lifting and tilting. Use protective polythene glove when touching frame/louvre

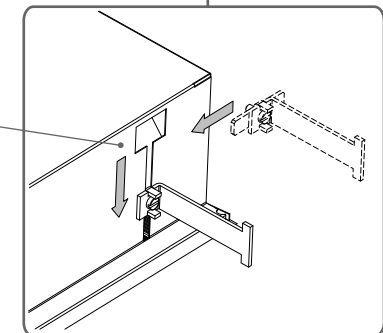
Draw up



MSBKX bearers (order separately) are installed via adjacent ceiling tiles. It is recommended that two people perform the install. Support luminaire using steel frame in middle of luminaire whilst lifting luminaire into ceiling aperture

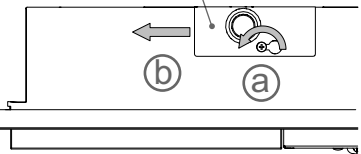
Insert bearer through slot to retain luminaire. Repeat for all four bearers. Lift luminaire, clamp bearer arms down onto the ceiling in lowest position and tighten locking screws

SOLID CEILINGS - Use internal fix bearers e.g. MSBKP (order separately). To access internal bearer slots remove internal side reflectors

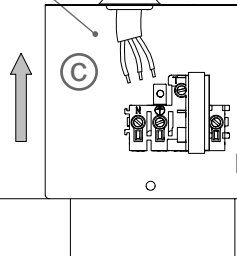


2 Wiring Details

- a. Slacken Cat Flap screw
- b. Slide Cat Flap to the left using keyhole



- c. Lift Cat Flap, feed cable through cable grommet and wire into terminal blocks



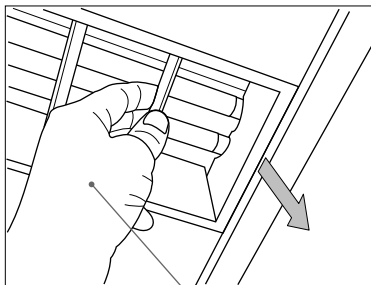
LUMINAIRES MUST BE EARTHED

N - Blue
 ⊕ - Green/Yellow
 Switched 1 or L - Brown
 Unswitched 2 - Red

For Emergency Versions
 Follow sequence 3.
 Re-connect battery lead to PCB.
 Then follow sequence 4.

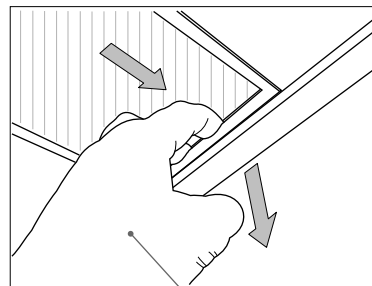
When complete, close Cat Flap, slide across using keyhole, tighten screw

3 Re-Lamping Procedure



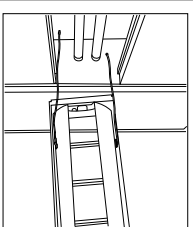
Louvred versions

Use the polythene glove supplied, using end crossblade closest to small return on frame, pull down to disengage frame springs. Frame will hang from suspension cord



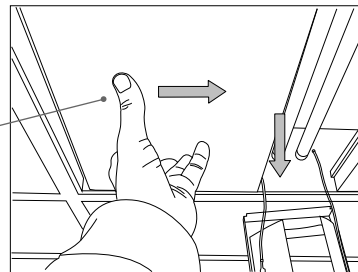
Panel versions

On frame end with small return, push fingers between panel and frame, pull down to disengage frame springs. Frame will hang from suspension cord

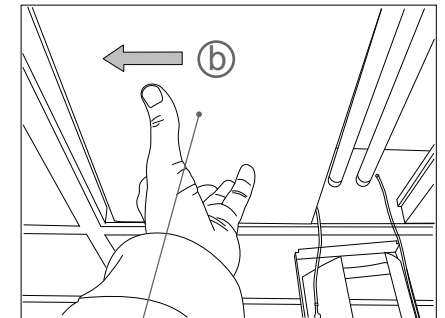
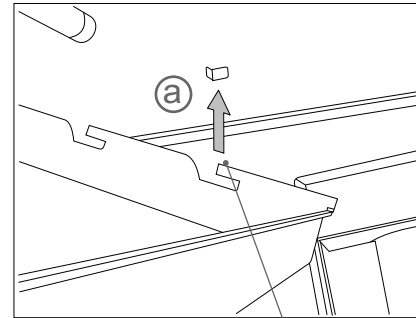


Louvred/Panel frame hangs down on suspension cord

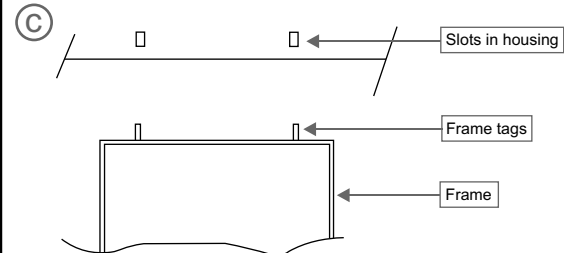
Side Panels
 Slide side panels towards middle, allow panel to swing down. Panel is retained by end fixing screws and allows HANDS FREE re-lamping



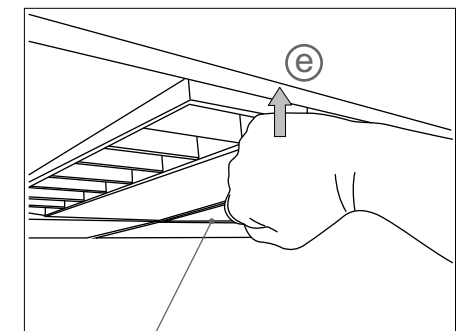
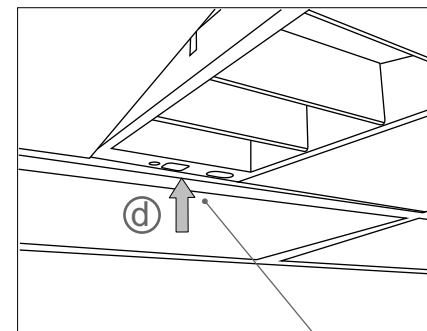
4 Re-Fitting Side Panels and Framed Louvre/Panel



- a. Swing panel up, aligning metal tags with gap in moulded diffuser endplate, both ends
- b. Push panel up then slide panel to the side until it touches side of housing



Lift earth lead end of frame into gap between side panels until it touches the panel side returns, slide frame towards end of fitting until metal tags on end of frame engage in slots in housing



- d. Swing other end of frame into housing
- e. Using the side of the hand, tap the frame into position until its flush with the side panels