

Floodlighting Columns



Designed specifically for the full range of floodlights, these columns and brackets offer a high quality product for most types of application. Floodlights can vary considerably in weight, area projected towards the wind and fixing details. Geographical location also needs to be taken into account when selecting the style and design of column.

In order to simplify selection, floodlighting columns have been carefully chosen to meet the needs of installers when using Aethon and Galaxy LED floodlights. A comprehensive range of brackets complement the columns, providing easy selection for all but exposed locations.

- Extensive range of 4m to 10m columns
- Comprehensive range of mounting brackets
- Simple to select compatibility charts
- Specifically matched systems for safety
- Quality hot dip galvanised steel construction

Luminaire Options

- Galaxy LED
- Aethon

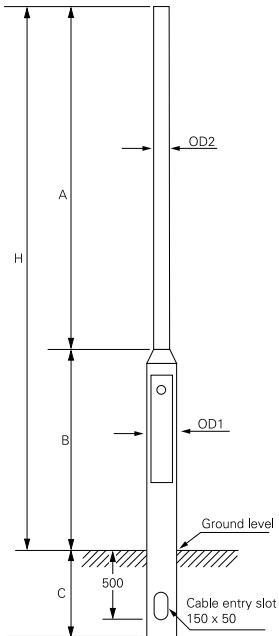
Materials

- Columns - hot dip galvanised tubular steel, bitumen coated root and treated wooden backboard
- Brackets - hot dip galvanised steel

Installation Notes

- Suitable for root mounting, placed into excavated hole in ground
- Support column perpendicular in hole, placing cable duct into entry slot, and backfill with concrete suitable for site conditions
- Alternatively, column can be placed into buried vertical pipe supported by appropriate mass of concrete, grouting gap to give firm fix
- Installer to supply and fit gland plate and fused cut-out to backboard in base compartment
- Access door has tamper resistant lock (key supplied)
- Brackets fitted internally or externally by grub screws
- Column drilled, tapped and supplied with grub screws for internally mounting brackets
- Cable exit points provided on brackets

Dimensions



Note - Actual height is marginally less than nominal height. Addition of brackets and luminaires provides optical centre of approx H

Column Ref	H Nominal	OD1 (mm)	OD2 (mm)	A (mm)	B (mm)	C (mm)
COL476GS	4m	140	76	3000	1000	800
COL576GS	5m	140	76	4000	1000	800
COL676GS	6m	140	76	5000	1000	1000
COL889	8m	168	99	6750	1250	1200
COL8140	8m	194	140	6750	1250	1200
COL10114	10m	168	114	8750	1250	1500
COL10140	10m	194	140	8750	1250	1500

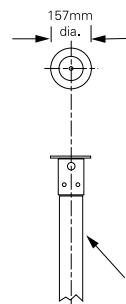
Options

- Columns and bracket combinations listed have been matched specifically to the Eaton brand luminaires listed. Contact us for other options, including exposed locations (installations at altitude or on the coast)
- Columns, when used with floodlight combinations shown, are to BS 5649
- K factor for columns up to and including 8m = 1.8
- K factor for 10m columns = 2.5
- Galvanising to BS729

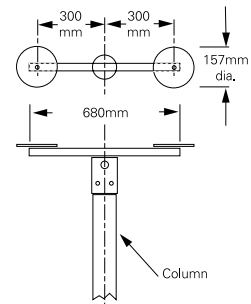
Specification

To specify state: Hot dip galvanised steel root mounted column, with bitumen coated root, single base compartment, tamper resistant lock, key provided, earth terminal and wooden treated backboard. When used with floodlighting brackets system, complies with the requirements of BS 5649, as Eaton's Floodlighting Columns range, part no. _____

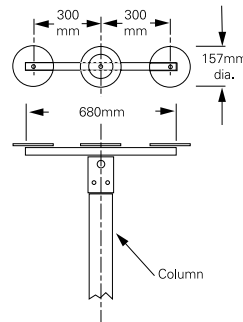
Floodlight bracket 1 way



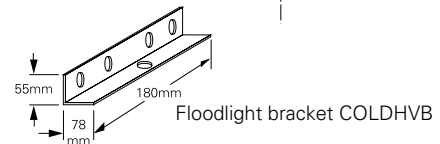
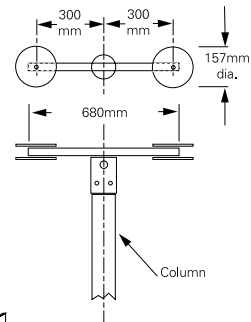
Floodlight bracket 2 way



Floodlight bracket 3 way



Floodlight bracket 4 way



Catalogue Numbers

Column Height	Column Cat No	Floodlighting Bracket and Accessories Cat Nos			
		1 Flood	2 Floods	3 Floods	4 Floods
Galaxy					
4m	COL476GS	COLFB176I	COLFB276I	COLFB376I	COLFB476I
5m	COL576GS	COLFB176I	COLFB276I	COLFB376I	COLFB476I
6m	COL676GS	COLFB176I	COLFB276I	COLFB376I	COLFB476I

Catalogue Numbers

Columns	Cat No	Weight (kg)	Floodlight Brackets	Cat No	Weight (kg)
4m rooted column, shaft with grub screws	COL476GS	34	Single 76mm internal fix	COLFB176I	5
5m rooted column, shaft with grub screws	COL576GS	38	Twin 76mm internal fix	COLFB276I	12
6m rooted column, shaft with grub screws	COL676GS	43	Triple 76mm internal fix	COLFB376I	14
8m rooted column, standard duty	COL889	80	Quad 76mm internal fix	COLFB476I	16
8m rooted column, heavy duty	COL8140	117	Single 89mm external fix	COLFB189E	5.5
10m rooted column, standard duty	COL10114	130	Twin 89mm external fix	COLFB289E	12.5
10m rooted column, heavy duty	COL10140	178	Triple 89mm external fix	COLFB389E	14.5
			Quad 89mm external fix	COLFB489E	15.5
			Single 114mm external fix	COLFB114E	6.0
			Twin 114mm external fix	COLFB214E	13.0
			Triple 114mm external fix	COLFB314E	15.0
			Quad 114mm external fix	COLFB414E	16.0
			Triple 140mm external fix	COLFB3140E	15.5
			Quad 140mm external fix	COLFB4140E	17.0
			Horizontal to vertical stirrup plate	COLDHVB	1.1

Note - Please refer to Strada section for details of columns and brackets for spheres

For more information on the installation requirements and product specifications, please visit our website: <https://uk.eaton.com/content/gb/en/products/product-catalog/exterior-lighting-floodlight-columns.html>