



Crompack LED

- Product luminaires comply with EN60598 and are suitable for use in normal interior conditions.
- This luminaire has an ambient temperature range of -10°C to 25°C for the non-emergency version
- For Emergency variants - This luminaire has an ambient temperature range of 5°C to 25°C, to ensure the batteries work correctly

1 Remove the front optical unit (incorporates the diffuser, heatsink channel & endcaps) and disconnect lead from the backplate (top circular insert). Grip backplate using finger slots in rear (bottom circular insert).

2 Secure the backplate to the mounting surface via the BESA, embossed feet or suspension wires features. Connect mains supply as stated below in 'Wiring Configurations'.

3 **Wiring Configurations**

Cut out end cap to allow for side supply cable entry

<p>Mains</p> <p>N - Blue (Neutral) ⊕ - Green/Yellow (Earth) L - Brown (Switched) Live</p>	<p>Dali</p> <p>N - Blue (Neutral) ⊕ - Green/Yellow (Earth) L - Brown (Switched) Live DALI - White (Neutral) DALI - Red (Switched) Live</p>
<p>Emergency</p> <p>N - Blue (Neutral) ⊕ - Green/Yellow (Earth) L - Brown (Switched) Live L1 - (Unswitched) Live</p>	<p>Emergency Dali</p> <p>N - Blue (Neutral) ⊕ - Green/Yellow (Earth) L - Brown (Switched) Live L1 - (Unswitched) Live DALI - White (Neutral) DALI - Red (Switched) Live</p>

LUMINAIRES MUST BE EARTHED

EMERGENCY AND HIGH FREQUENCY LUMINAIRES MUST NOT BE MEGGER OR HIGH VOLTAGE TESTED

4

I) Connect plug and socket from geartray to backplate

II) Offer the front MODULE to the backplate of the batten

!! IMPORTANT !!

III) Ensure the safety cords are connected to the tabs

5

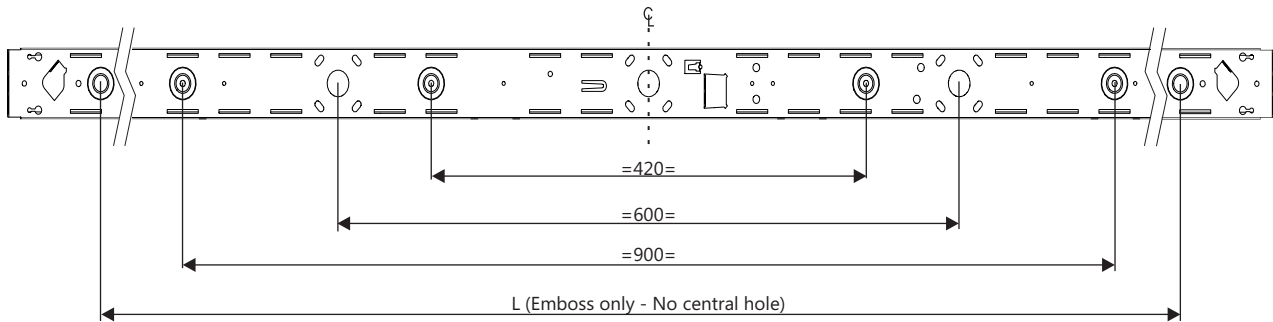
I) Make sure the fixing features on both backplate and front face are inline when closing the batten together

!! IMPORTANT !!

II) Ensure the screws at either end are fully tightened

NOTE: Ensure metal ends are situated inside plastic endcaps. Don't trap safety chord or wires between metalwork

Fixing Point Details



Backplate Version	1.2m	1.5m	1.8m
L (mm)	N/A	1271.4	1536.4

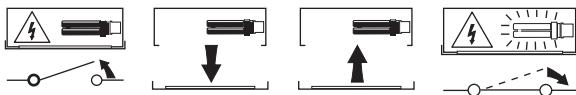
Safe Operation

1. Check the rating label for voltage and frequency before connecting this luminaire to the electrical supply.
2. Ensure that the mains supply is switched off when working on this luminaire, whether installing or carrying out any other servicing.
3. Do not mount luminaire on or close to readily flammable materials.
4. To prevent damage to driver, do not mix with conventional magnetic ballasts on the same electrical circuit.
5. Where use in more onerous situations is required, e.g. In part-completed buildings before "drying-out" is completed, or areas where ambient temperatures are outside the normal temperature range, then consult our Sales Office.
6. When used as intended this product complies with the EMC Directive 2014/30/EU

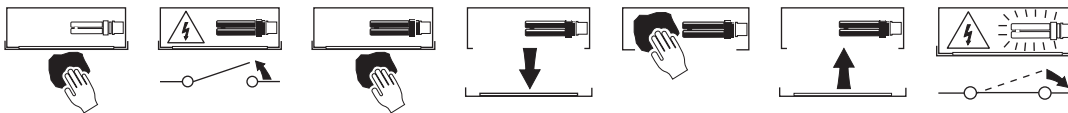
Servicing and Disposal

1. At commissioning and handing over of installation ensure that a copy of these instructions is presented to the authority responsible for the operation and maintenance of the luminaires.
2. Servicing, e.g. cleaning, must only be carried out after the electricity supply has been switched off. It must not be assumed that luminaires with light sources not lit are switched off-always check before servicing.
3. Cleaning should be carried out at regular intervals to ensure that dirt does not accumulate to an extent that will impair the thermal safety or optical performance of the luminaire. Regular cleaning will also ensure that the optical performance of the luminaires is maintained.
4. Avoid touching the LED array surface. To clean - Blow surface with either dry air or nitrogen gas.
5. At the end of life the luminaire is classed as WEEE under directive 2014/30/EU and should be disposed of in accordance with local legislation.

Luminaire Service



Luminaire Cleaning



End of Life and Components Disposal

