

Chevin LED

- Product luminaires comply with EN60598 and are suitable for use in normal interior conditions.
- This luminaire has an ambient temperature range of -5°C to 25°C for the non-emergency version
- For Emergency variants - This luminaire has an ambient temperature range of 5°C to 25°C, to ensure the batteries work correctly

1

Remove framed panel from Chevin - use removal tool provided to disengage the springs on each side

2

Remove cover by slackening 2/4 cover fixing screws (depending whether single or twin) and sliding over keyholes

3

Secure fitting to mounting surface using 4 x fixing point

4

Feed mains wires through one of the cable entries on end or rear. Cable entries located on each endcap with drill start and on base of the housing two on twin, one on single.

Ensure mains supply is switched off and wire terminal block as per diagram.

Note: Product suitable for looping with max conductor size 2x2.5mm².

<p>Mains</p> <p>N - Blue (Neutral) ⊕ - Green/Yellow (Earth) L - Brown (Switched) Live</p>	<p>Dali</p> <p>N - Blue (Neutral) ⊕ - Green/Yellow (Earth) L - Brown (Switched) Live DALI - White (Neutral) DALI - Red (Switched) Live</p>
<p>Emergency</p> <p>N - Blue (Neutral) ⊕ - Green/Yellow (Earth) L - Brown (Switched) Live L1 - (Unswitched) Live</p>	<p>Emergency Dali</p> <p>N - Blue (Neutral) ⊕ - Green/Yellow (Earth) L - Brown (Switched) Live L1 - (Unswitched) Live DALI - White (Neutral) DALI - Red (Switched) Live</p>

LUMINAIRES MUST BE EARTHED

EMERGENCY AND HIGH FREQUENCY LUMINAIRES MUST NOT BE MEGGER OR HIGH VOLTAGE TESTED

Fit to ceiling using either suitable Fixing screws, 600mm BESA Entry (twin only) 8mm drop rods Or suspension wires (suspension Kit sold separately) CHPSKIT one Per fitting.

Dim.	Surface Mounted		Suspended		8mm Drop Rod		BESA Entry
	A	B	C	D	E	F	G
Single	900	70	850*	90*	800	70	N/A
Twin	900	125	977	180	900	180	600

Note: On the 5' twin emergency versions, one 20mm cable hole is covered by the battery, however the BESA fixing holes are still accessible.

Single

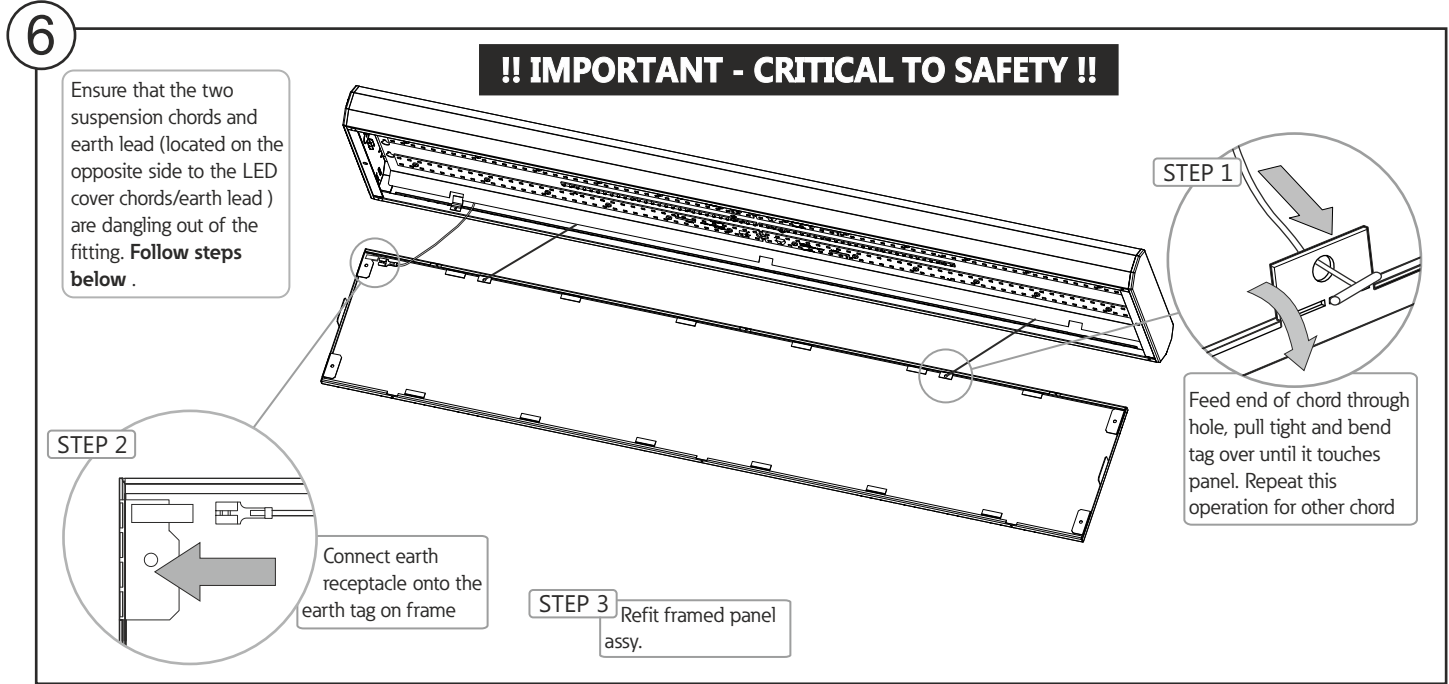
Twin

For suspended fittings:

- Fix ceiling boss with wire fitted to mounting surface
- Thread wire into clutch
- Fit ends of 'Y' section wire into keyhole slots in the housing, as shown

5

Refit cover over keyholes and tighten screws. Ensure that the cover earth lead and any leads connecting cover to housing are not trapped during this operation



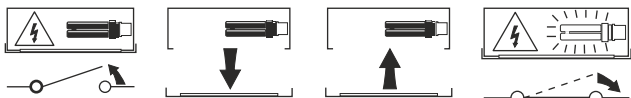
Safe Operation

1. Check the rating label for voltage and frequency before connecting this luminaire to the electrical supply.
2. Ensure that the mains supply is switched off when working on this luminaire, whether installing or carrying out any other servicing.
3. Do not mount luminaire on or close to readily flammable materials.
4. To prevent damage to driver, do not mix with conventional magnetic ballasts on the same electrical circuit.
5. Where use in more onerous situations is required, e.g. In part-completed buildings before "drying-out" is completed, or areas where ambient temperatures are outside the normal temperature range, then consult our Sales Office.
6. The light source contained in this luminaire shall only be replaced by the manufacturer or his service agent or a similar qualified person.
7. **DO NOT** alter dip switch settings

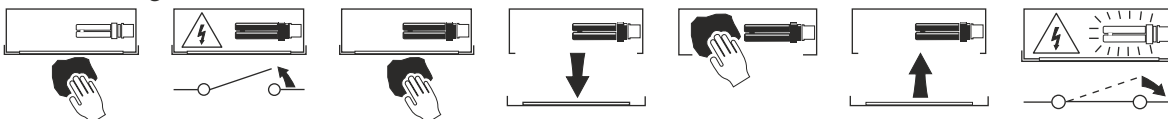
Servicing and Disposal

1. At commissioning and handing over of installation ensure that a copy of these instructions is presented to the authority responsible for the operation and maintenance of the luminaires.
2. Servicing, e.g. cleaning, must only be carried out after the electricity supply has been switched off. It must not be assumed that luminaires with light sources not lit are switched off-always check before servicing.
3. Cleaning should be carried out at regular intervals to ensure that dirt does not accumulate to an extent that will impair the thermal safety or optical performance of the luminaire. Regular cleaning will also ensure that the optical performance of the luminaires is maintained.
4. Avoid touching the LED array surface. To clean - Blow surface with either dry air or nitrogen gas.
5. At the end of life the luminaire is classed as WEEE under directive 2002/96/EC and should be disposed of in accordance with local legislation.

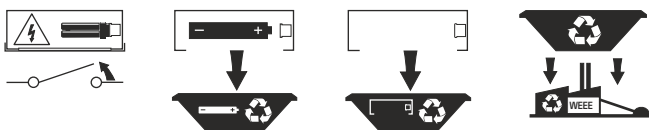
Luminaire Service



Luminaire Cleaning



End of Life and Components Disposal



Eaton
Wheatley Hall Road, Doncaster, South Yorkshire, DN2 4NB

Sales
T: +44 (0)1302 303303
F: +44 (0)1302 367155
E: sales@cooper-ls.com

General
+44 (0)1302 321541
+44 (0)1302 303220
technical@cooper-ls.com

International Sales
+44 (0)1302 303250
+44 (0)1302 303251
export@cooper-ls.com