



# LED Bulkhead

- Product luminaires comply with EN60598 and are suitable for use in normal interior conditions.
- This luminaire has an ambient temperature range of -25°C to 25°C for the non-emergency version
- For Emergency variants - This luminaire has an ambient temperature range of 5°C to 25°C, to ensure the batteries work correctly

**1 Remove the front**

Remove all clips as shown in images A and B

Open the diffuser as shown in image C

**2**

Remove the screw securing the LED board, and open the geartray.

**Microwave Variant**  
To access sensor remove screws & open bracket. Refer to K882V to setup and fix bracket back into place.

**3**

**a**

Take base of fitting, knock through the preferred cable entry point.  
**Note:** central cable entry requires drilling. Then use 4 x suitable mounting screws (supplied) and secure fitting to mounting surface.  
**Note:** For sensor versions do not use central cable entry.

210.0mm (large)  
160.0mm (small)

**Recommended Position**  
Ensure screw is positioned at the top of the fitting to ensure correct orientation when fitting

Cable Entry

210.0mm (large)  
160.0mm (small)

Cable Entry 16mm Conduit

**b**

Wire mains cable to terminal block as per below:

**Mains**

N - Blue (Neutral)

⊕ - Green/Yellow (Earth)

L - Brown (Switched) Live

**Emergency**

N - Blue (Neutral)

⊕ - Green/Yellow (Earth)

L - Brown (Switched) Live

L1 - (Unswitched) Live

LUMINAIRE MUST BE EARTHED

**Note:** Once all instructions completed, reverse step 2 then step 1

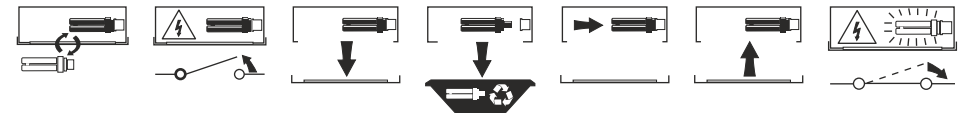
## Safe Operation

1. Check the rating label for voltage and frequency before connecting this luminaire to the electrical supply.
2. Ensure that the mains supply is switched off when working on this luminaire, whether installing or carrying out any other servicing.
3. Do not mount luminaire on or close to readily flammable materials.
4. To prevent damage to driver, do not mix with conventional magnetic ballasts on the same electrical circuit.
5. Where use in more onerous situations is required, e.g. In part-completed buildings before "drying-out" is completed, or areas where ambient temperatures are outside the normal temperature range, then consult our Sales Office.
6. The light output of the product may cause injuries to human eyes in circumstances where the product is viewed directly with unshielded eyes for more than a few seconds.

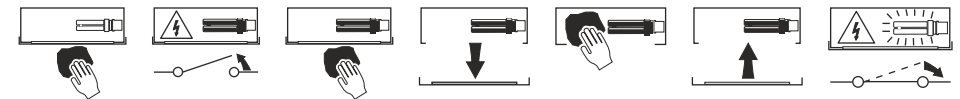
## Servicing and Disposal

1. At commissioning and handing over of installation ensure that a copy of these instructions is presented to the authority responsible for the operation and maintenance of the luminaires.
2. Servicing, e.g. cleaning, must only be carried out after the electricity supply has been switched off. It must not be assumed that luminaires with lamps not lit are switched off-always check before servicing.
3. Cleaning should be carried out at regular intervals to ensure that dirt does not accumulate to an extent that will impair the thermal safety or optical performance of the luminaire. Regular cleaning will also ensure that the optical performance of the luminaires is maintained.
4. Avoid touching the LED array surface. To clean - Blow surface with either dry air or nitrogen gas.
5. At the end of life the luminaire is classed as WEEE under directive 2002/96/EC and should be disposed of in accordance with local legislation.

### Luminaire Service



### Luminaire Cleaning



### End of Life and Components Disposal

