

Caius

3



For a wide range of applications where flexibility needs to be married to performance, the Caius range offers a complete solution. Caius combines practical attributes with contemporary clean lines and form. Although at home in most interior applications, Caius offers ingress protection to IP65 so suits a wide range of locations. Caius gives a highly efficient design solution, minimising installation points.

High output LED sets offer high levels of efficacy combined with class leading emergency operation helping to reduce the number of installed points whilst maintaining compliant lighting designs.

- Polycarbonate lens and ABS body for durability
- TPa material means compliance with the requirements for escape routes
- Opal diffuse lens for homogenous light output
- Choice of two complimentary body sizes
- Fully integral emergency versions
- Microwave option
- Corridor control function option (DALI only)
- IP65 dust tight and water jet proof
- Balanced looks maximise the efficiency and output of Caius
- Installation friendly design reduces on site costs

Light source and Control Gear Options

- LED – high output, high efficiency LED chip set optimised for maximum efficiency
- Energy efficient LED drivers - high frequency as standard
- DALI option

Materials

- Body – ABS structurally strong and impact resistant
- Lens – TPa polycarbonate opal

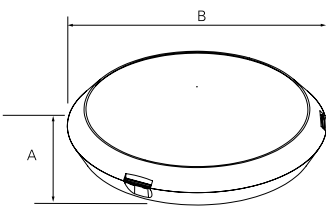
Installation Notes

- Terminal block with a 2 x 2.5mm² cable capacity per termination

Options

- Fully integrated LED emergency conversion, 3 hour duration
- Microwave sensor inbuilt option
- Corridor function control option (only available on DALI)
- Suitable for use on defined escape routes
- We offer a range of product support contracts to aid commissioning, reduce your maintenance costs, comply with legislative test requirements and increase the lifespan of your lighting equipment

Dimensions

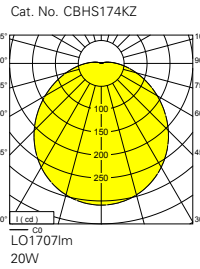


Variant	A (mm)	B (mm)
Small	125	350
Large	135	430

Specification

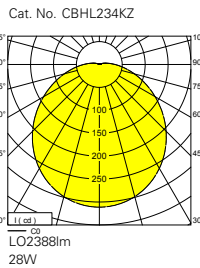
To specify state: Surface mounted luminaire, IP65 with polycarbonate lens and ABS construction body. White trim with 3 / 4 point closures. High efficiency LED and fully integrated emergency gear, as Eaton's Caius range, part no. _____

Photometric Data



Utilisation factors / TM5		Room Index												
Reflectances			0.75	1.0	1.25	1.5	2.0	2.5	3.0	4.0	5.0			
C	W	F												
70	50	20	56	64	71	77	84	88	92	96	100			
70	30	20	49	56	64	69	77	82	86	92	95			
70	10	20	43	51	58	64	71	77	82	88	92			
50	50	20	54	62	68	73	80	84	87	92	94			
50	30	20	47	55	62	67	74	79	83	88	91			
50	10	20	42	50	57	62	69	75	79	84	88			
30	50	20	52	59	66	70	76	80	83	87	90			
30	30	20	46	53	60	65	71	76	79	84	87			
30	10	20	42	49	55	60	67	72	76	81	84			
0	0	0	39	46	52	57	63	68	71	76	79			
BZ-class			5	5	5	5	5	5	5	5	5			

See page 382 for design guide



Utilisation factors / TM5		Room Index												
Reflectances			0.75	1.0	1.25	1.5	2.0	2.5	3.0	4.0	5.0			
C	W	F												
70	50	20	56	64	71	77	84	88	92	96	100			
70	30	20	48	56	64	69	77	82	86	92	95			
70	10	20	43	50	58	63	71	77	82	88	92			
50	50	20	54	62	68	73	80	84	87	92	94			
50	30	20	47	55	62	67	74	79	83	88	91			
50	10	20	42	49	57	62	69	75	79	84	88			
30	50	20	52	59	66	70	76	80	83	87	90			
30	30	20	46	53	60	65	71	76	79	84	87			
30	10	20	42	49	55	60	67	72	76	81	85			
0	0	0	39	46	52	57	63	68	71	76	79			
BZ-class			5	5	5	5	5	5	5	5	5			

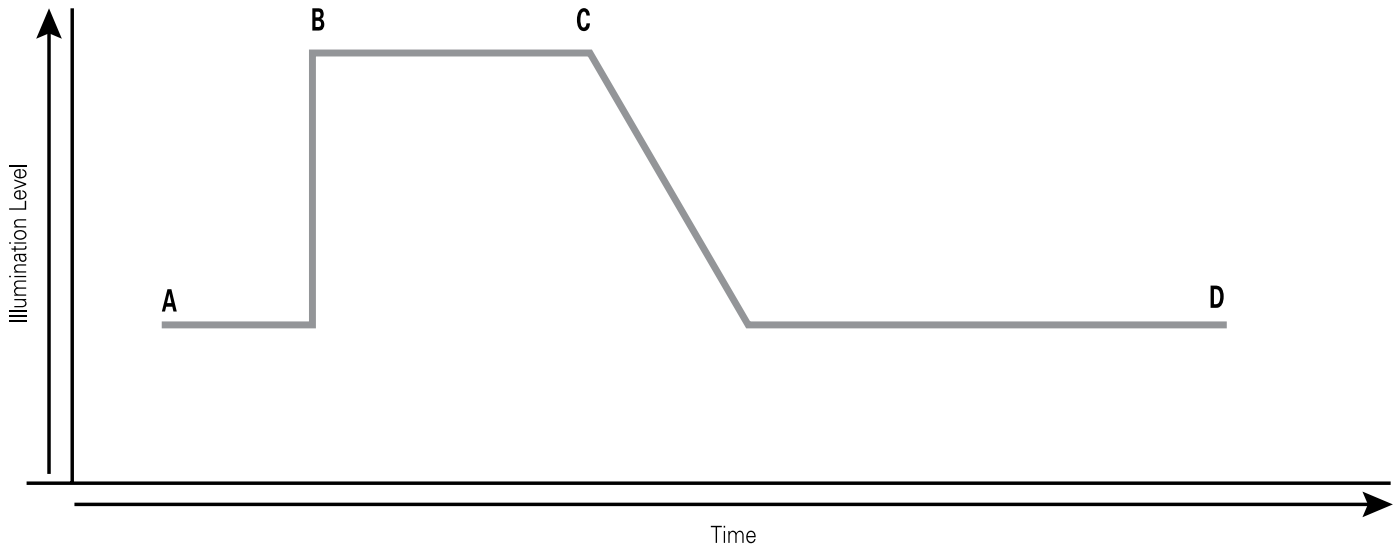
See page 382 for design guide



Captive diffuser and LED board for ease of installation

Corridor Function

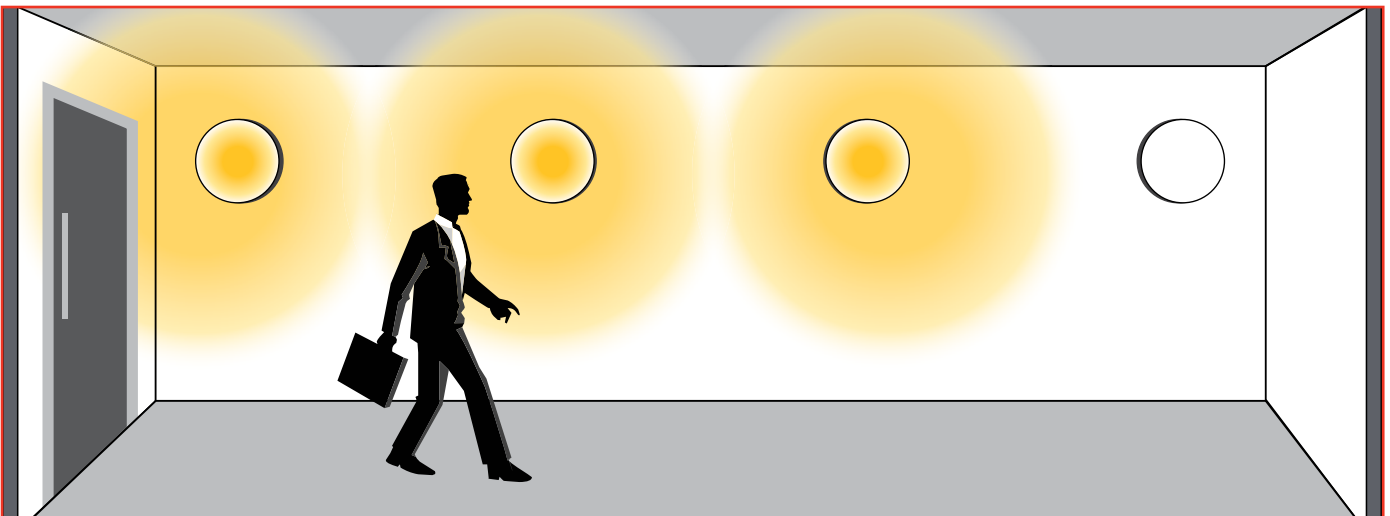
Caius is available with a DALI corridor function option for applications where comfort, path finding and safety are considerations. Typically used in transit areas, corridor function allows the safe passage of people by utilising local detection to switch products on rapidly either adjacent to detection, or in some cases ahead of the direction of movement. Caius can be used to trigger this by means of the optional built in microwave detector or by linking to remotely mounted devices.

Operation

- A - Set-back illumination level - typically 10%
- B - Presence detected - rapid rise to full illuminance level
- C - Gradual dimming after presence no longer detected
- D - Set-back illumination level

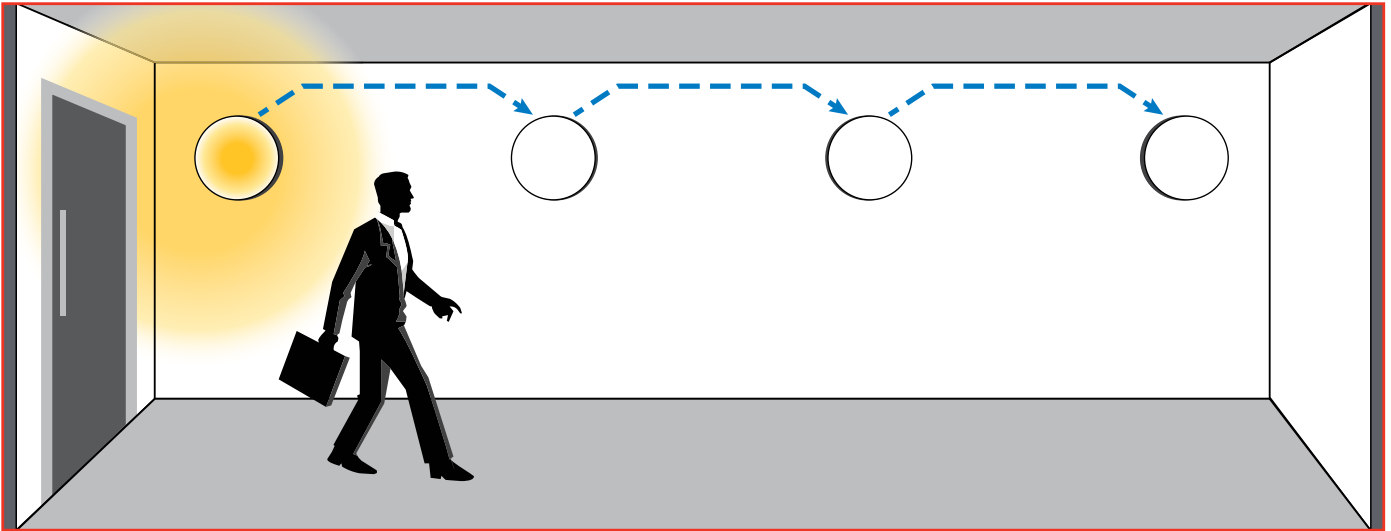
Corridor Function - individual internal control

In this scenario, each luminaire is individually controlled and offers a 'pathway' effect as progress is made along a route. Gradual dimming takes place as the individual leaves the detection zone.



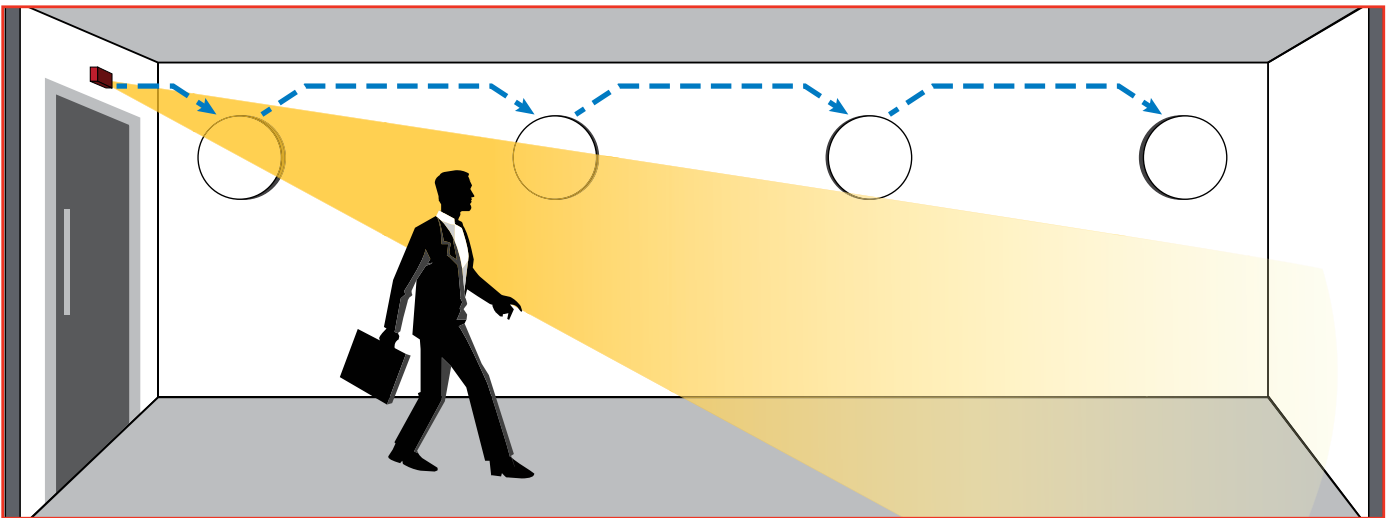
Corridor Function – single internal microwave in master / slave configuration

In this scene, an individual luminaire operates as a master and other slaves are linked. All luminaires operate at the same time.



Corridor Function – remote detection control

Remote device may also be used to control luminaires in corridor function. This may be appropriate where the detection position and luminaire position may not be the same.



Catalogue Numbers

Variant	Cat No	Lumen Output	Wattage (W)	Llm/ cW	Weight (kg)	Em Cat No	Weight (kg)
Small	CBHS174KZ	1856	18	103.1	1.3	ELCBHS174KZ	2.2
Large	CBHL234KZ	2516	24.13	104.3	1.9	ELCBHL234KZ	2.8

For DALI Dimming option replace character Z with DD, e.g. CBHS174KZ becomes CBHS174KDD

Emergency versions also available with automatic test functionality.

For corridor function, add the suffix CO, e.g. CBHS174KDD becomes CBHS174KDDCO

Note - corridor function is only available as an option on DALI products, not on HF variants

For more information on the installation requirements and product specifications, please visit our website: <https://uk.eaton.com/content/gb/en/products/product-catalog/caius-decorative-led-wall-lights.html>