

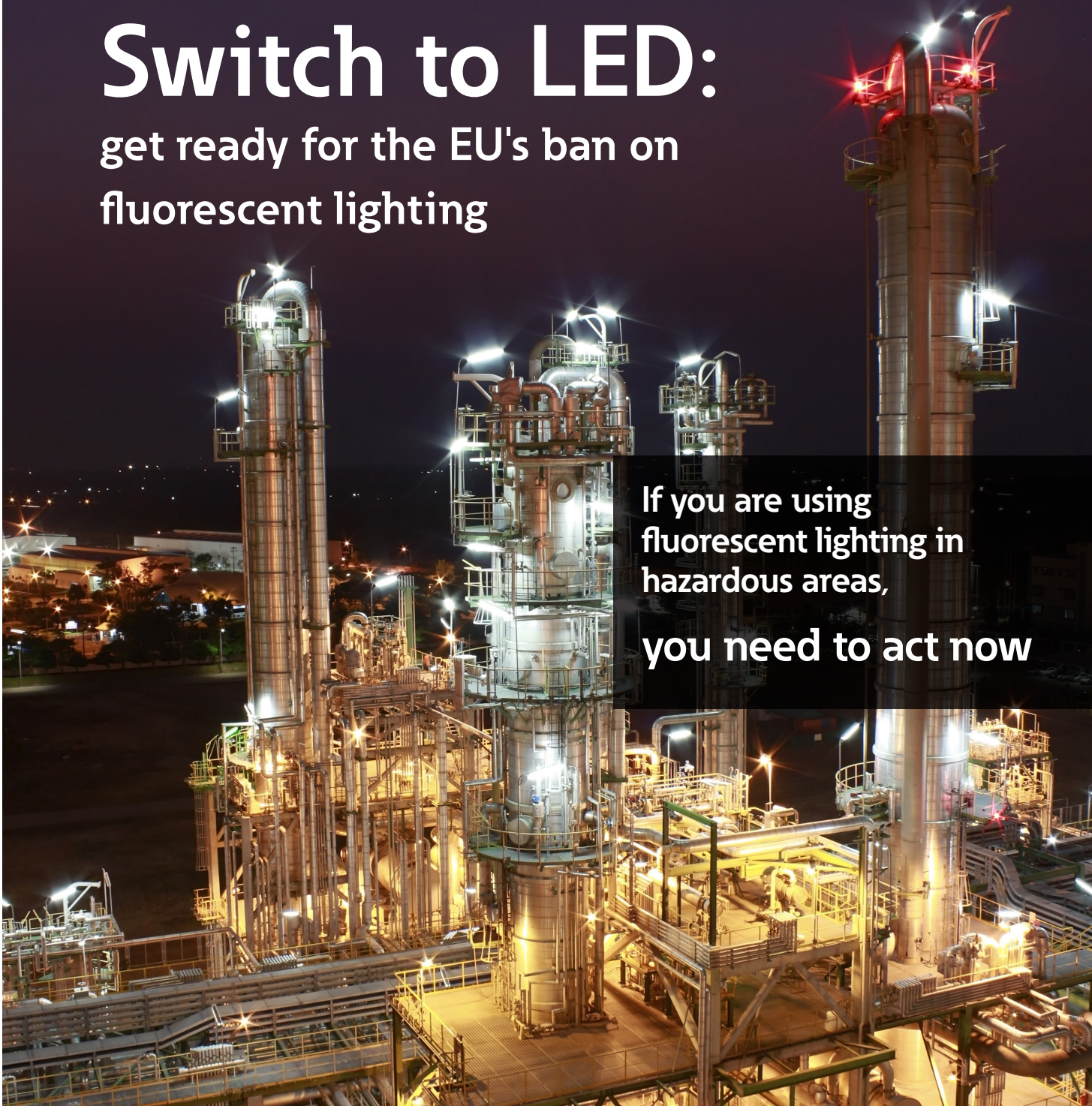
The safety you rely on.

CROUSE-HINDS
SERIES

Switch to LED:

get ready for the EU's ban on
fluorescent lighting

If you are using
fluorescent lighting in
hazardous areas,
you need to act now



EATON

Powering Business Worldwide



**We make
a healthy planet work.**

EU's ban of fluorescent lighting – what does it mean?

T8 fluorescent tubes will be banned from 25 August 2023 – and there is no longer an exemption for Ex lighting.

The RoHS* directive of European Union restricts the use of certain hazardous substances in electrical and electronic equipment across Europe, including the use of mercury in lighting products. In addition, the Ecodesign 2020/2019/EU regulation, which came into effect in September 2021, phases out products that fail to meet efficiency requirements. The number of exemptions have now been revised and this has great impact on fluorescent lighting products. Both RoHS and Ecodesign regulations are intended to protect the environment and public health by enforcing climate-friendly sustainable lighting.

The EU ban means that fluorescent light fixtures in Ex areas should be replaced as soon as possible to avoid fluorescent tube shortages causing disruption in operation.

It is essential that Ex rated LED alternatives are installed in hazardous area !

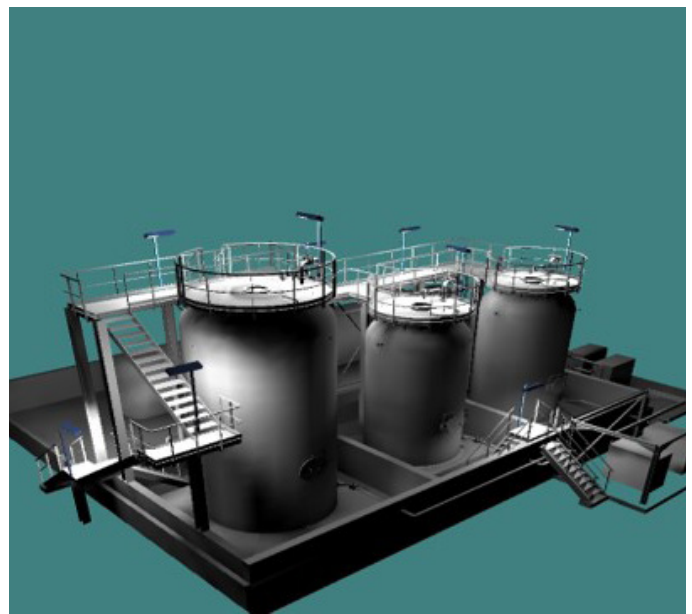
Eaton's offering

Why should you switch to Eaton's LED lighting from your current fluorescent installation? Because not all LEDs are created equal. LED solutions are well known for their improved light quality, long life and low energy consumption, but lighting in heavy industrial applications often presents unique challenges, such as high vibration, extreme temperatures, corrosion, water, dirt and potentially explosives gases or dusts. Each of these factors can severely impact the lifetime and performance of LED fixtures.

Therefore, it is essential to partner with a lighting manufacturer with a proven track record in both industrial lighting design and harsh and hazardous area certifications. Eaton is that partner.

With its Crouse-Hinds series portfolio, Eaton offers the perfect combination of hazardous area expertise coupled with decades of electrical engineering knowhow to help you make the switch.

Our team offers complimentary lighting layout, a analysis and design support services. From simple layouts to complex drawings, our industrial and hazardous area Lighting Design Engineers will work with you to deliver precise, efficient, application and environment-appropriate lighting designs that optimize your cost of ownership.



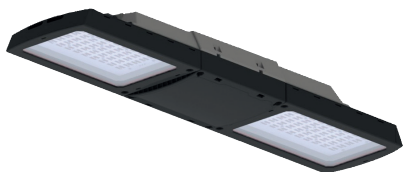
Precise, efficient and environment-appropriate lighting designs

*Restriction of Hazardous Substances

Switch on to Eaton Ex LED solutions

Whether you want to replace existing fluorescent lighting with a retrofit LED module, or install an entirely new LED lighting system solution, Eaton provides you with a variety of fully Ex certified Crouse-Hinds series solutions for use in harsh and hazardous areas.

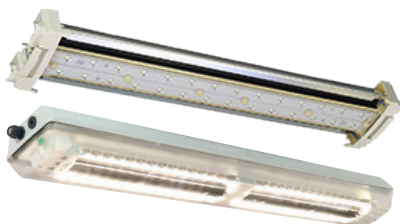
Switching to LED is easy with Eaton's safe, reliable and efficient LED solutions. Find below the right replacement for your current installation.



CEAG ExLin LED fixture Zone 1/21

CEAG ExLin LED fixture combines state-of-the-art LED technology with optimised thermal management and a time-tested GRP enclosure to extend service life in extreme environments. Designed for safety, reliability, and efficiency.

Superior performance and efficiency / Lightweight design / Optimised light distribution with optics and lens options



CEAG eLLK LED fixture & eLLK Retrofit Module Zone 1/21

CEAG eLLK LED fixture is a robust and reliable LED fitting. It is available as LED module and as a complete LED fixture. LED module converts existing fluorescent fixture into LED one in a few simple steps.

Efficient Solution / Cost-effective installation / Reliable housing / Retrofit and new installation



CEAG nLLK15 LED fixture Zone 2/22

CEAG nLLK15 LED fixture has a robust design for heavy-duty demands. Ensures long reliability & allows easier replacement of components.

Proven and robust design / Easy maintenance by double sided safety lock / Cost efficient installation

Current Fluorescent installation	Eaton's Crouse-Hinds Series LED solutions		
CEAG eLLK92 Fluorescent installation Zone 1/21	CEAG eLLK Retrofit Module solution	CEAG eLLK LED complete fixture	CEAG ExLin LED
eLLK92 2x18W	eLLK-2 module	eLLK92 400A	ExLin 3L-1
eLLK92 2x36W	eLLK-4 module	eLLK92 800A	ExLin 5L-1/ExLin 5L-2
eLLK92 2x58W	---	---	ExLin 7L-2
eLLK92 2x18W NIB	---	eLLK92 400A NE	ExLin 3L-1 NE+
eLLK92 2x36W NIB	---	eLLK92 800A NE	ExLin 5L-1 NE+
eLLK92 2x18W NE	eLLK-2 module + VE12 400	eLLK92 400A NE	ExLin 3L-1 NE+
eLLK92 2x36W NE	eLLK-4 module + VE12 800	eLLK92 800A NE	ExLin 5L-1 NE+
eLLK92 2x18W V-CG-S	eLLK-2 module	eLLK92 400A V-CG-S	ExLin 3L-1 V-CG-S
eLLK92 2x36W V-CG-S	eLLK-4 module	eLLK92 800A V-CG-S	ExLin 5L-1/ExLin 5L-2 V-CG-S

Current Fluorescent installation	Eaton's Crouse-Hinds Series LED solutions		
Any brand fluorescent installation Zone 1/21	CEAG eLLK Retrofit Module solution	CEAG eLLK LED complete fixture	CEAG ExLin LED
fluorescent 2x18W	---	eLLK92 400A	ExLin 3L-1
fluorescent 2x36W	---	eLLK92 800A	ExLin 5L-1/ExLin 5L-2
fluorescent 2x58W	---	---	ExLin 7L-2
fluorescent 2x18W with battery	---	eLLK92 400A NE	ExLin 3L-1 NE+
fluorescent 2x36W with battery	---	eLLK92 800A NE	ExLin 5L-1 NE+

Current Fluorescent installation	Eaton's Crouse-Hinds Series LED solutions	
Any brand fluorescent installation Zone 2/22	CEAG nLLK15 LED	
fluorescent 2x18W	nLLK15 600	
fluorescent 2x36W	nLLK15 1200	
fluorescent 2x58W	nLLK15 1500	

Ready to make the switch to LED? Contact Eaton today.

Why Eaton? Eaton is dedicated to ensuring that reliable, efficient and safe power is available when it's needed most. With unparalleled knowledge of electrical power management across industries, experts at Eaton deliver customized, integrated solutions to solve our customers' most critical challenges. Eaton's Crouse-Hinds series with over 125 years experience in harsh and hazardous areas, has the expertise to see beyond today.

Our focus is on delivering the right solution for the application. From groundbreaking products to full solutions and engineering services, we also provide an unwavering commitment to personal support, that makes customer success a top priority.

Visit www.eaton.com

To see our full lighting portfolio, visit eaton.com/lighting



Contact details Sales and technical support:

U.S. (Global Headquarters): Eaton's Crouse-Hinds Business

1201 Wolf Street
Syracuse, NY 13208
(866) 764-5454
FAX: (315) 477-5179
FAX Orders Only:
(866) 653-0640
CrouseCustomerCTR@Eaton.com

For more information:

If further assistance is required, please contact an authorized Eaton Distributor, Sales Office, or Customer Service Department.

Australia

Phone +61-2-8787-2777
Fax +61-2-9609-2342
crousehindsanz@eaton.com

China

Phone +86-21-2899-3600
Fax +86-21-2899-4055
ECHsales@eaton.com

Great Britain

Phone +44-247-630-89 30
Fax +44-247-630-10 27
sales5@eaton.com

India

Phone +91-124-4683888
Fax +91-124-4683899
cchindia@eaton.com

Canada

Toll Free +1-800-265-0502
Fax +1-800-263-9504
Fax orders only: +1-866-653-0645

Korea

Phone +82-2-3484-6783
Fax +82-2-3484-6778
CCHK-sales@cooperindustries.com

Mexico/Latin America/ Caribbean

Phone +52-555-804-4000
Fax +52-555-804-4020
mxmercadotecnia@cooperindustries.com

Spain

Phone +34-9-37362710
Fax +34-9-37835055
sales.CCH.es@cooperindustries.com

Middle East (Dubai)

Phone +971-4-427-2522
Phone +971-4-427-2500
Fax +971-4-429-8521
CHMEsales@Eaton.com

Germany

Phone +49-6271-806-500
Fax +49-6271-806-476
sales.CCH.de@cooperindustries.com

The Netherlands

Phone +31-10-2452145
Fax +31-10-2452121
CHRD_mail@Eaton.com

Norway

Phone +47-32-244600
Fax +47-32-244646
CHLoffice@eaton.com

Singapore:

Phone +65-6645-9888
Fax +65-6297-4819
CHSI-Sales@Eaton.com

Turkey

Phone +90-216-464-20-20
Fax +90-216-464-20-10
infoEGTurkey@eaton.com

Russia

Phone +7-495 510-24-28
Fax +7-495 510-24-28
info@cooper.ru.com
www.cooper-russia.ru

Eaton

1000 Eaton Boulevard
Cleveland, OH 44122
United States
Eaton.com

Eaton's Crouse-Hinds Business

1201 Wolf Street
Syracuse, NY 13208
(866) 764-5454
CrouseCustomerCTR@Eaton.com



© 2022 Eaton Corporation
All Rights Reserved
Printed in **Sep. 2022**
Publication No. **30080002315**
Sep2022

The information provided in this document reflects the general characteristics of the referenced products at the time of issue and may not reflect their future characteristics. Eaton Corporation reserves the right to modify the contents of this document and the characteristics of the referenced products without prior notification. Eaton Corporation does not assume liability for potential errors or omission of information in this document.