

FEPR SERIES FLUORESCENT LUMINAIRES

Installation & Maintenance Information

SAVE THESE INSTRUCTIONS FOR FUTURE REFERENCE

⚠ CAUTION Read carefully before installing and wiring the luminaire.

These instructions include information for installation in both hazardous and marine locations. Any warning or special instructions should be closely followed. Marine installations on boats should be done in accordance with the regulations of the USCG, CFR46, SUB CHAPTER J, PARTS 110-113. Hazardous area installations should be done in accordance with article 500 and 501 of the NEC. Check the ratings to insure suitability for the area. Must be installed in accordance with the NEC (National Electrical Code) and or CEC (Canadian Electrical Code) and all other applicable codes. All luminaires must be properly grounded.

INSTALLATION & ELECTRICAL WIRING

⚠ WARNING Risk of electrical shock hazard, only qualified personnel should conduct this procedure! Do not make electrical connections with the power ON. Refer to fixture nameplate for minimum supply wire rating.

1. Define mounting method, direct mount to 3/8" mounting holes or use beam clamp provided. This fixture is extremely heavy and must be mounted to a surface that can structurally support 100 lbs.

2. Loosen screws (9D) to adjust position of brackets (6A) along tubing (1D). Position brackets (6A) and tighten screws (9D).

See mounting dimensions illustration below.

NOTE: If fixtures are mounted in-line at distance less than dimension "B", tilt mount brackets (TLT) options are required for re-lamping.

⚠ CAUTION Keep fixture as horizontal as possible while mounting. Do not let fixture hang on one end at any time.

3. Direct mount: Drill clearance hole thru mounting surface for 3/8" bolts provided. Remove beam clamp from brackets (6A). Mount fixture using 3/8" bolts and nuts (9B).

4. Clamp mount: Slide beam clamps over beam and tighten setscrew (9C).

5. Remove plastic cap (8P).

6. Slide fitting (not provided) over supply cable (not provided). Strip the supply cable jacket back approximately 2".

⚠ CAUTION See nameplate for voltage & frequency requirements!

7. Connect L1 or hot lead to the black wire. Connect L2 or neutral to the common white wire. Connect ground wire to green ground wire. Push each wire and connections inside ballast box (0B).

8. Install fitting into ballast box (0B) per manufacturer's instructions.

NOTE: If removing ballast box cover (1B) is necessary for wiring and/or servicing, retighten each bolt to minimum 15 ft*lbs.

LAMP REPLACEMENT

⚠ WARNING Disconnect fixture from supply circuit before removing end caps (1C). Do not re-energize until end caps are re-installed.

Use only lamp size, type and/or wattage as shown on fixture nameplate.

1. Loosen and remove end cap (1C) by turning counter-clockwise.

2. Loosen the screws (9H) (qty 2, #6-32) or depress the retaining clips.

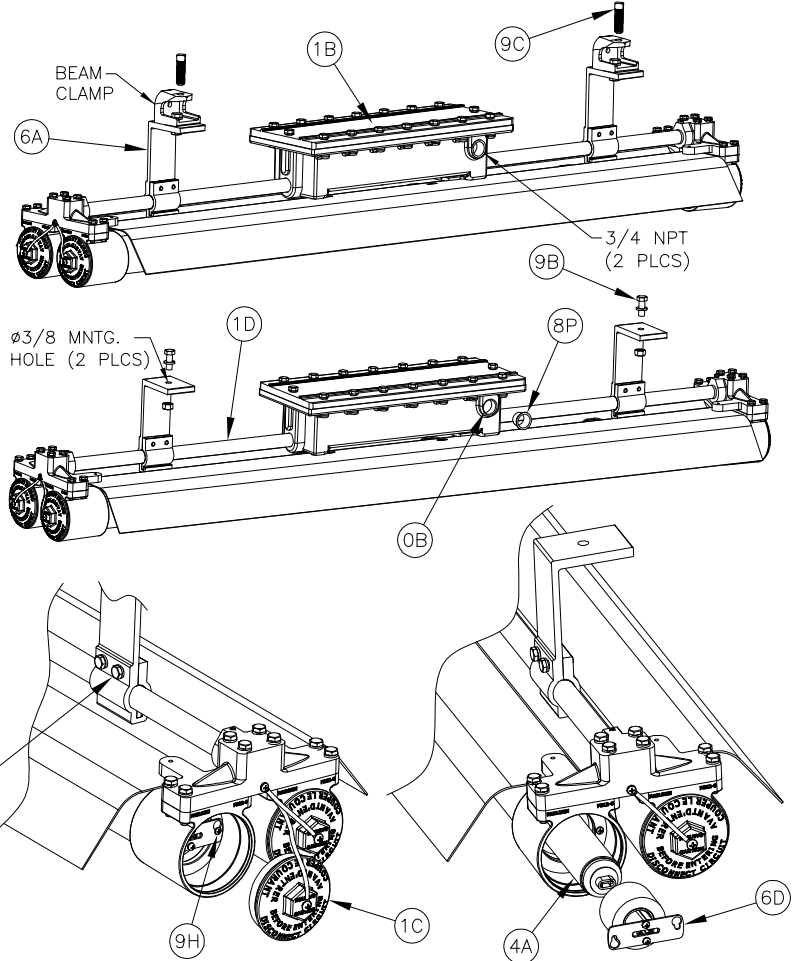
3. Rotate and pull out lampholder bracket (6D). Remove lamp (4A).

4. Slide new lamp (4A) into glass tube and engage to lampholder at opposite end.

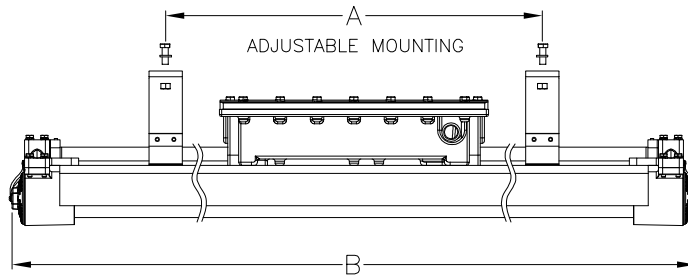
5. Replace lampholder bracket (6D) and tighten screws (9H) (qty 2, #6-32) or engage clips.

6. Replace end cap (1C).

⚠ CAUTION When replacing end cap, make sure that there are no protruding wires that can be pinched.



| Spare Parts | |
|------------------------------|---------------|
| Description | Part Number |
| 17w Globe Assembly | FX9012A/B-17 |
| 20w Globe Assembly | FX9012A/B-20 |
| 24w Globe Assembly | FX9012A/B-24 |
| 32w Globe Assembly | FX9014A/B-32 |
| 35w Globe Assembly | FX9012A/B-35 |
| 40w Globe Assembly | FX9014A/B-40 |
| 54w Globe Assembly | FX9014A/B-54 |
| 60w Globe Assembly | FX9014A/B-60 |
| 110w Globe Assembly | FX9014A/B-110 |
| 35w,60w & 110w Lampholder | FX4010A/B |
| 17w,20w,32w & 40w Lampholder | FX4012A/B |
| 24w & 54w Lampholder | FX4622A/B |



Notes: A/B = A (Aluminum) or B (Brass)
Lampholder - order 2 per lamp

| Mounting Dimensions | | |
|---------------------|-------------|----|
| Wattage | A | B |
| 17w, 20w, 24w, 35w | 18.5 - 22.5 | 30 |
| 32w, 40w, 54w, 60w | 18.5 - 46 | 54 |
| 110w | 23.5 - 46 | 54 |

All statements, technical information and recommendations contained herein are based on information and tests we believe to be reliable. The accuracy or completeness thereof are not guaranteed. In accordance with Crouse-Hinds "Terms and Conditions of Sale", and since conditions of use are outside our control, the purchaser should determine the suitability of the product for his intended use and assumes all risk and liability whatsoever in connection therewith.