

FEPR, COMMANDER SERIES PENDANT MOUNT FLUORESCENT LUMINAIRES

Installation Information

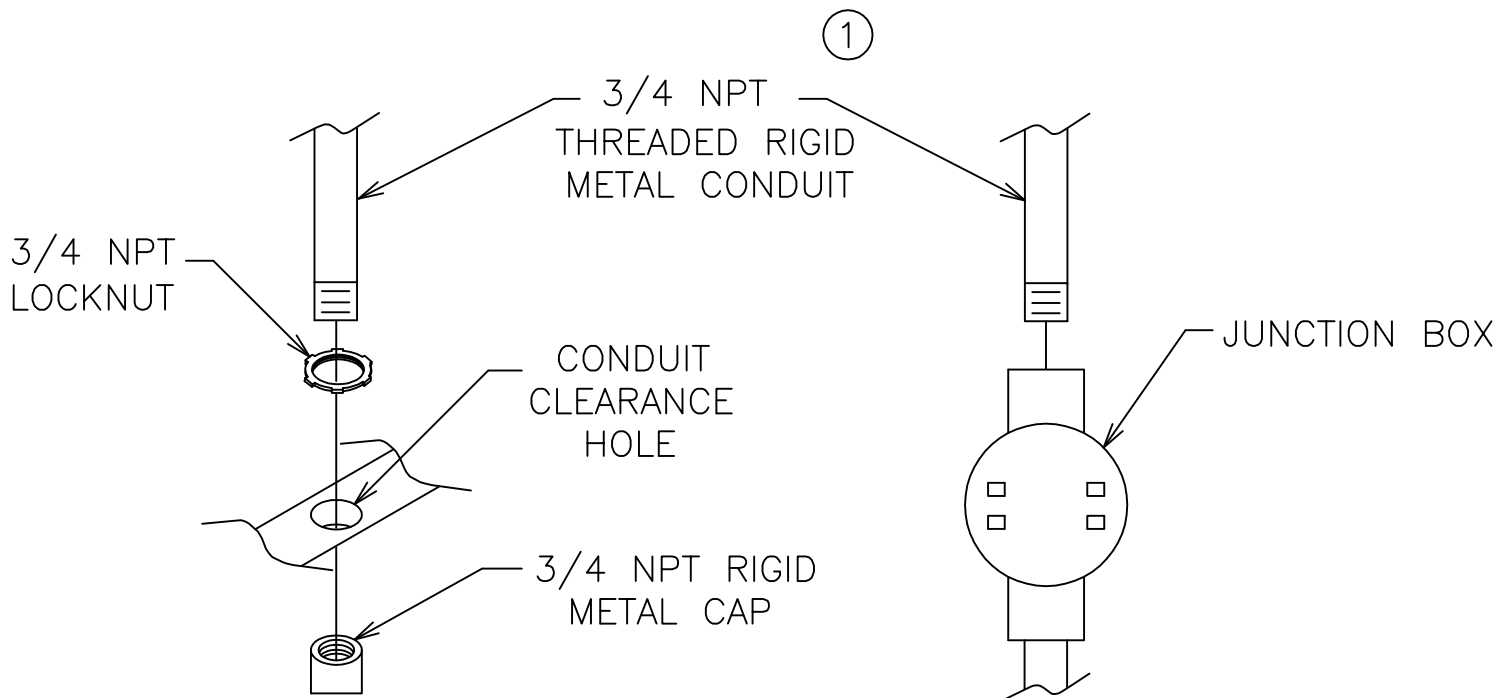
IF LBL1308

SAVE THESE INSTRUCTIONS FOR FUTURE REFERENCE

- ① LUMINAIRE SHOULD BE SUPPORTED BY 3/4 NPT THREADED RIGID METAL CONDUIT CAPABLE OF SUPPORTING A MINIMUM OF 100 LBS.

THE CONDUIT ENTERING THE THREADED JUNCTION BOX END OF THE FIXTURE SHOULD BE TIGHTENED SECURELY.

THE CONDUIT FOR THE OPPOSING END CAN BE PASSED THRU THE CLEARANCE HOLE AND SUPPORTED WITH A LOCKNUT AND 3/4 THREADED RIGID METAL PIPE CAP.



All statements, technical information and recommendations contained herein are based on information and tests we believe to be reliable. The accuracy or completeness thereof are not guaranteed. In accordance with Crouse-Hinds "Terms and Conditions of Sale", and since conditions of use are outside our control, the purchaser should determine the suitability of the product for his intended use and assumes all risk and liability whatsoever in connection therewith.