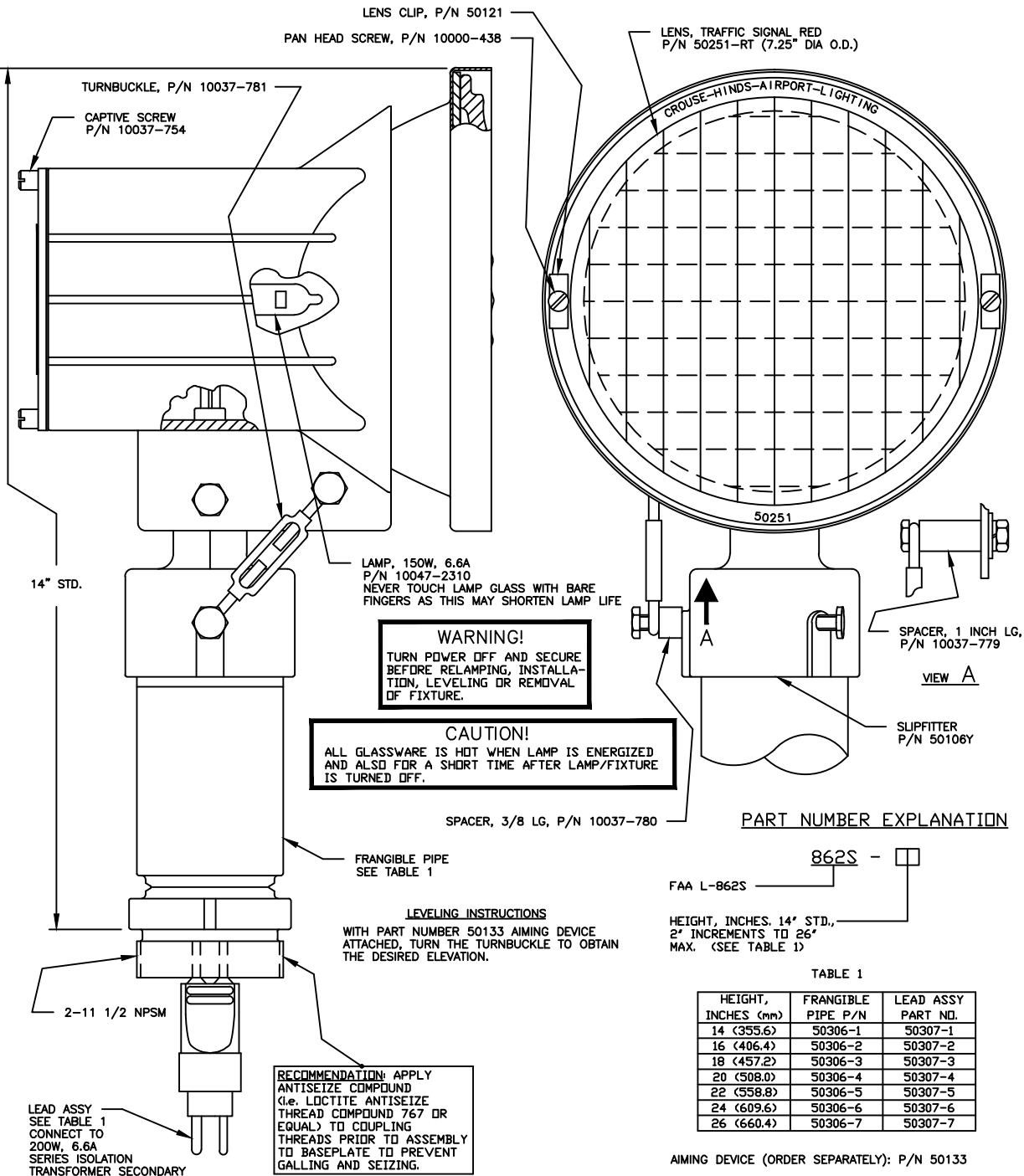


ELEVATED STOP BAR LIGHT (FAA L-862S) INSTRUCTION SHEET



WARNING!
 TURN POWER OFF AND SECURE
 BEFORE RELAMPING, INSTALLA-
 TION, LEVELING OR REMOVAL
 OF FIXTURE.

CAUTION!
 ALL GLASSWARE IS HOT WHEN LAMP IS ENERGIZED
 AND ALSO FOR A SHORT TIME AFTER LAMP/FIXTURE
 IS TURNED OFF.

LEVELING INSTRUCTIONS
 WITH PART NUMBER 50133 AIMING DEVICE
 ATTACHED, TURN THE TURNBUCKLE TO OBTAIN
 THE DESIRED ELEVATION.

RECOMMENDATION: APPLY
 ANTISEIZE COMPOUND
 (i.e. LOCTITE ANTISEIZE
 THREAD COMPOUND 767 OR
 EQUAL) TO COUPLING
 THREADS PRIOR TO ASSEMBLY
 TO BASEPLATE TO PREVENT
 GALLING AND SEIZING.

PART NUMBER EXPLANATION

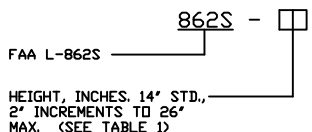


TABLE 1

HEIGHT, INCHES (mm)	FRANGIBLE PIPE P/N	LEAD ASSY PART NO.
14 (355.6)	50306-1	50307-1
16 (406.4)	50306-2	50307-2
18 (457.2)	50306-3	50307-3
20 (508.0)	50306-4	50307-4
22 (558.8)	50306-5	50307-5
24 (609.6)	50306-6	50307-6
26 (660.4)	50306-7	50307-7

AIMING DEVICE (ORDER SEPARATELY): P/N 50133

INSTRUCTION SHEET
ELEVATED STOP BAR LIGHT (FAA L-862S)

LIMITED PRODUCT WARRANTY

REFER TO EATON'S CROUSE-HINDS AIRPORT LIGHTING PRODUCTS
TERMS AND CONDITIONS PER PRODUCT SPECIFIC WARRANTY INFORMATION.