

**DOCUMENT** 8922  
**REVISION** U  
January 19, 2022



# **INSTRUCTION MANUAL**

**HIGH INTENSITY RUNWAY LIGHT/QUARTZ (HRLQ)**

**FAA L-862**

**Crouse-Hinds By EATON**  
**1200 Kennedy Road**  
**Windsor, CT 06095**

**Copyright © 2022 Cooper Technologies Company**

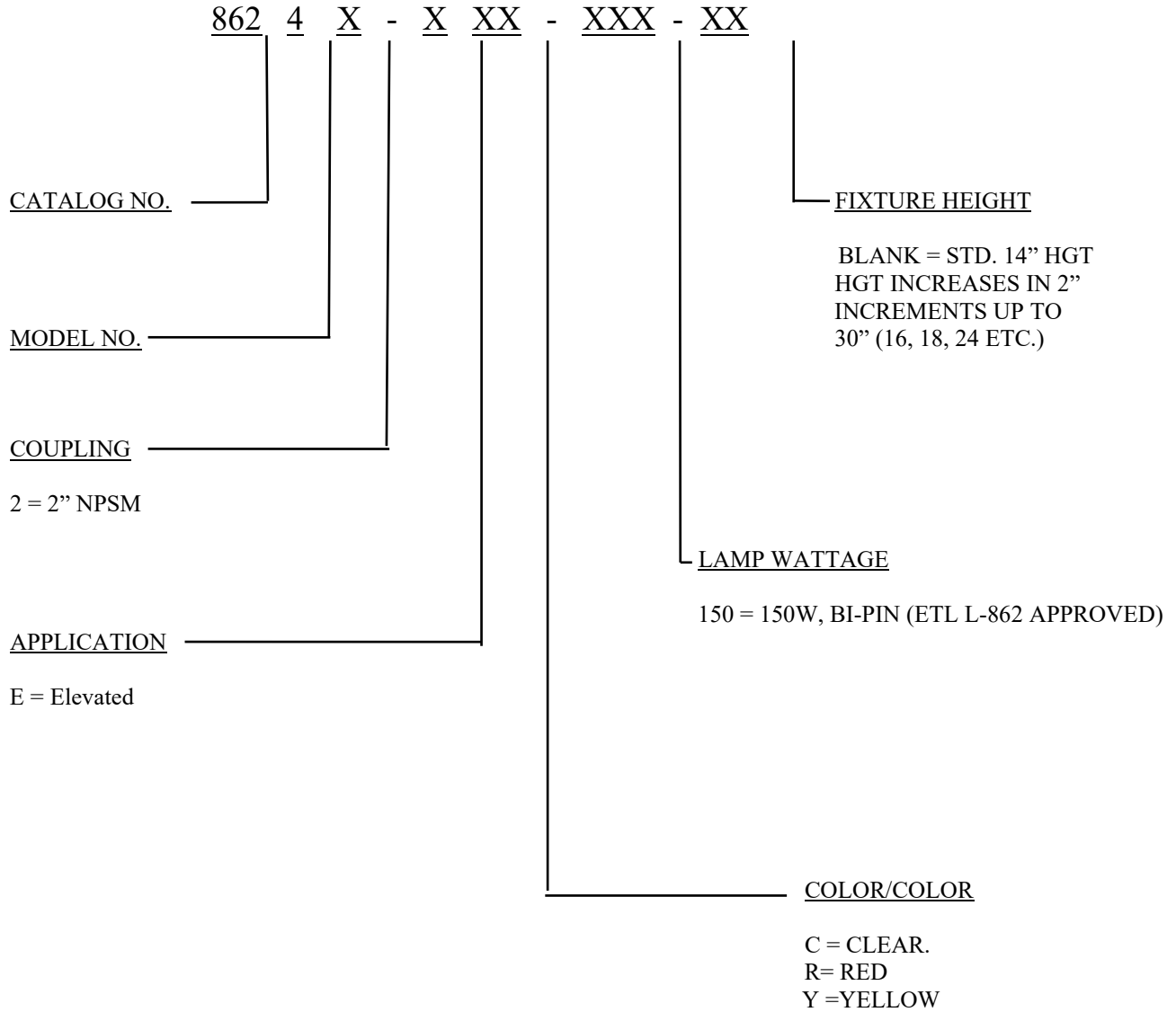
<b>REVISIONS</b>				
REVISION NUMBER	ISSUE/REISSUE LTR NUMBER	DESCRIPTION	CHKD	APPROVED
F		REVISED EXTENSIVELY, SEE RECORD COPIES..	12/05/96 EFL	JMM
G	A96-407/408	ADDED NOTE 2 WHICH LISTS THE P/N'S THIS FIXTURE COULD LEVEL & ALIGN LOCATING DEVICE WAS 2.159 DIA HOLES ADDED LEVELING DEVICE P/N 40999 TO PAGE 1 OF INSTALLATION INSTRUCTIONS.	01/10/97 EFL	JMM
H	A97-091	CHANGED FRANGIBLE COUPLINGS ON UNITS NON 14" STD. IN HEIGHT CREATED NEW DRAWING FOR UPPER SECTION OF SUPPORT COLUMN DELETED 40994 IN FAVOR OF 40878 TO ELIMINATE REDUNDANCY AND ADDED THE -12P VERSION.	02/19/97 EFL	
J	A97-365	P/N ITEM 26 WAS 10047-2233 ADDED ITEMS 48 & 49	06/27/97 EFL	KWF
K	A99-052	ADDED ITEM 43 TO SHEET 4; ADDED ITEM 3 & 4 TO VIEW IN DIRECTION A ON SHEET 5; ADDED NOTE ON OPTICAL SUB-ASSY TO SHEET 6; ADDED PICTORAL PLUG TO SHEETS 6 & 7; ITEM 10 WAS 40988; ITEM 12 WAS 10A07-016D16, #8-32 X 1/2 LG.; ITEM 27, 40995-7 & -8 WERE -5 & -6 ON SHEET 9; ON SHEET 9, ITEM 47 WAS QTY 1	3/19/99	KWF
L	A99-199	REVISED PICTURE OF VIEW IN DIRECTION A (SHEET 5) TO AGREE WITH LATEST MANUFACTURING PRACTICE.	11/8/99 DCW	BAC
M	A203-127	SHEET 8, ITEM 16 WAS 40971	5/14/03	GFR
N	A203-151	REVISED FIGURES ON SHEETS 4 THRU 7 TO AGREE WITH LATEST MANUFACTURING	6/18/03	GFR
P	A206-296	REVISED COPYRIGHT ON TITLE PAGE; REVISED ITEM 5 PICTORIAL ON PAGE 7	8/24/06	PG
R	A212-111	Page 4, added locking pin installation view; title page, updated copyright	4/25/12	PG
S	A212-303	Deleted section 1.1, Installation of Std Ht (14") Light Fixtures; 1.2.3, deleted locknut (20) or (21); page 4, revised pictorial to delete 1 piece 14" std ht column/coupling; Parts List, deleted item 1, P/N 40938-1, qty 1, item 2, P/N 40938-2, qty 1, item 20, 40718, qty1, item 21, 10047-589, qty 1 & added item 30 P/N 40878-2P	8/28/12	PG
T	A219-256	Revised format & warranty extensively; Revised part number ordering data for coupling & lamp wattage; Revised section 1.2.3 & 1.3.2; Deleted P/N 20058 & 10047-2138 from item no. 26 & 40995-2 from item no. 27 from part list.	12/6/19	PG
U		Page 1, deleted Coupling 1 = 1-11 1/2 UNF, APP T = Threshold, Lamp Wattage 200 = 200W Bi-Pin, 201 = 200W PK-30d, 101 = 100W PK-30d, 122 = 115W DCR, 202 = 200W DCR, Color/Color B – Blue, G – Green, X = Opaque/Blank	1/19/2022	PG

**LIMITED PRODUCT WARRANTY**

REFER TO EATON'S CROUSE-HINDS AIRPORT LIGHTING PRODUCTS TERMS AND  
CONDITIONS PER PRODUCT SPECIFIC WARRANTY INFORMATION.

**PART NUMBER ORDERING DATA**

**HIGH INTENSITY RUNWAY LIGHT/QUARTZ (HRLQ) FAA L-862**



## **1.0**    **INSTALLATION**

### **1.2**    **Installation of Light Fixtures**

- 1.2.1    Slide extension (30) over wire assembly (7), (33), or (47) and into top of base (28) or (29). Slide frangible base (28) or (29) over wire assembly (7), (33) or (47) and onto extension (30).
- 1.2.2    Make connection of wire assembly with L-823 plug (7), (33) or (47) into socket.
- 1.2.3    Turn frangible base (28) or (29) into base plate or stake mount and tighten.
- 1.2.4    With extension (30) bottomed in frangible base (28) or (29) and in a vertical position, tighten lower screw (31).
- 1.2.5    Turn optical sub-assembly (3), (32) or (43) until arrow on top of outer lens is pointed towards Runway Centerline and tighten upper screw.

### **1.3**    **Leveling & Aligning Light Fixtures**

- 1.3.1    Prior to leveling, lockpin, clamp band, outer lens and gasket must be removed.
- 1.3.2    Leveling is achieved by adjusting appropriate screws (25) to maintain optical sub-assembly in a level position. Leveling and aligning may be expedited with the aid of device Crouse-Hinds P/N 40999.

## **1.4 Installing Lamp**

- 1.4.1 Insert lamp (26) into lamp holder assembly (8) or (34).
- 1.4.2 For DCR lamps, loosen the two screws (6) holding the lamp holder sub-assembly (44- sheet 7) and remove. Insert the DCR from the underside of this assembly. Attach the socket assembly (45) to the lamp socket and re-assemble. It should be noted that installation of the DCR lamps does not require removal of the inner dome assembly (14).
- 1.4.3 If lamp glass is handled during installation, clean lamp with alcohol and dry with clean soft cloth prior to operating. Contamination of the quartz may result in reduced lamp performance.

## **1.5 Installing Inner Dome Assembly**

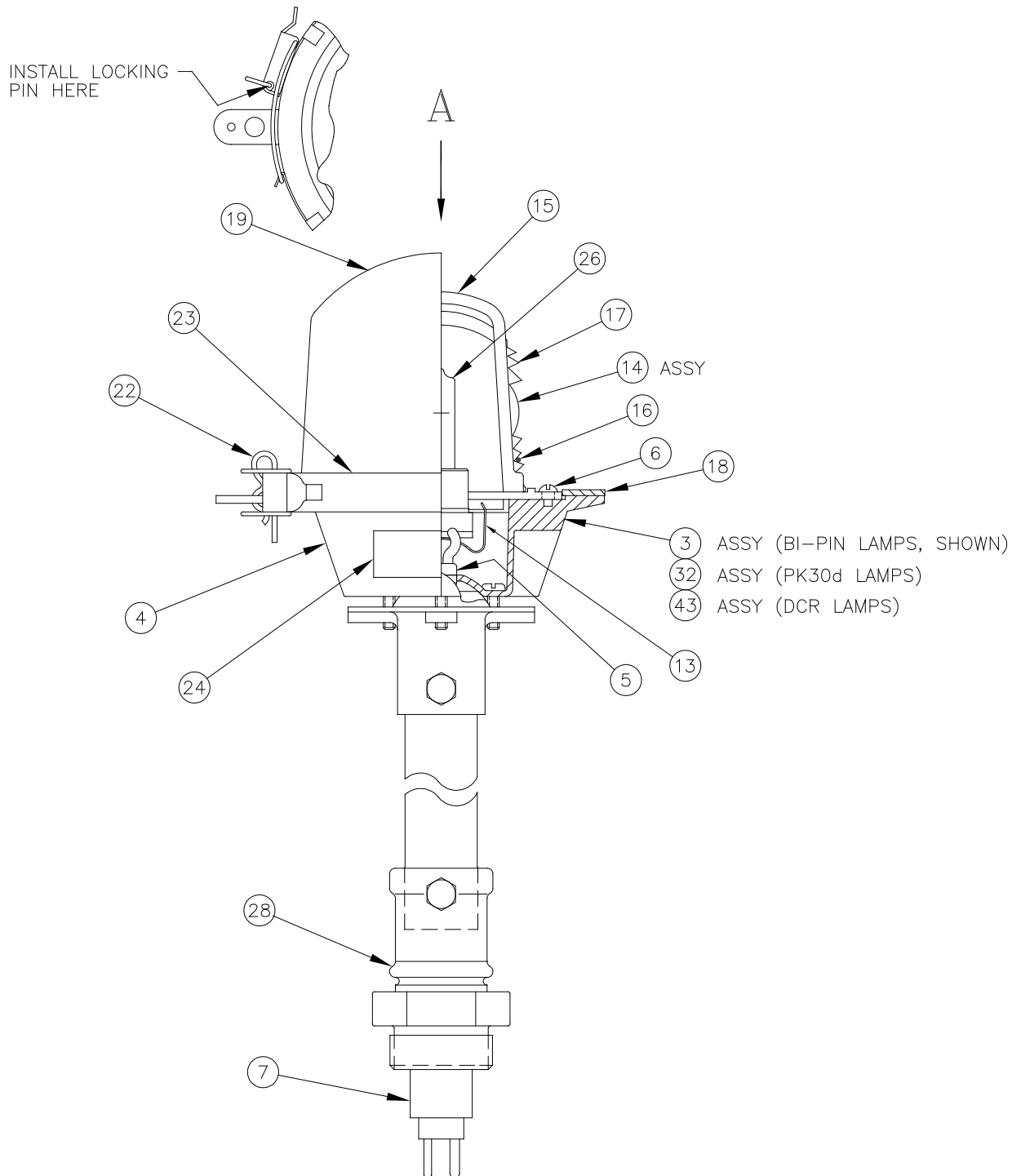
- 1.5.1 To replace lamp, remove lockpin (22), clamp ring (23) and outer lens (19).
- 1.5.2 Loosen the two screws (6) holding the DCR lamp holder sub-assembly (44) and remove the entire sub-assembly including the inner dome (14). It is not necessary to remove the inner dome (14) from the lamp holder sub-assembly (44).
- 1.5.3 Remove the Socket Assembly (45) from the lamp base. Remove the lamp (26) from the lamp holder sub-assembly, replace and re-assemble parts.

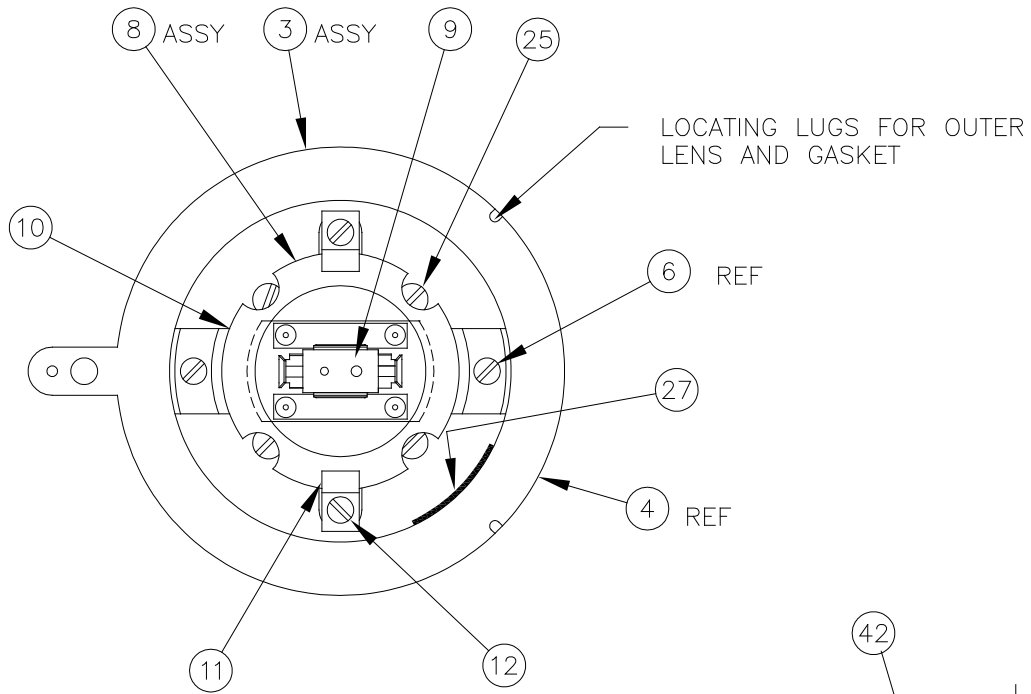
## **1.6 Re-Lamping (Bi-Pin and PK30d)**

- 1.6.1 To replace lamp, remove lockpin (22), clamp ring (23) and outer lens (19).
- 1.6.2 Remove inner dome assembly (14) by loosening screws (12) holding spring clips.
- 1.6.3 Replace lamp (26) and reassemble parts.

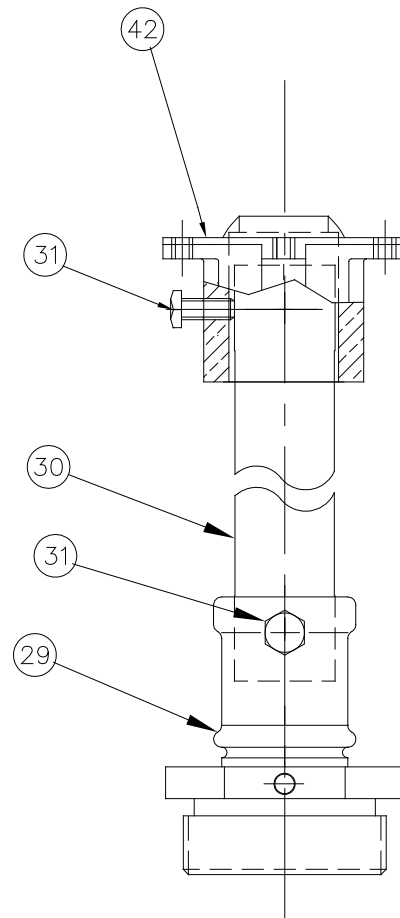
## **1.7 Re-Lamping (DCR)**

- 1.7.1 To replace DCR lamp, remove lockpin (22), clamp ring (23) and outer lens (19).
- 1.7.2 Loosen the two screws (6) holding the DCR lamp holder sub-assembly (44) and remove the entire sub-assembly including the inner dome (14). It is not necessary to remove the inner dome (14) from the lamp holder sub-assembly (44).
- 1.7.3 Remove the socket assembly (45) from the lamp base. Remove the lamp (26) from the lamp holder sub-assembly (44), replace and re-assemble parts.

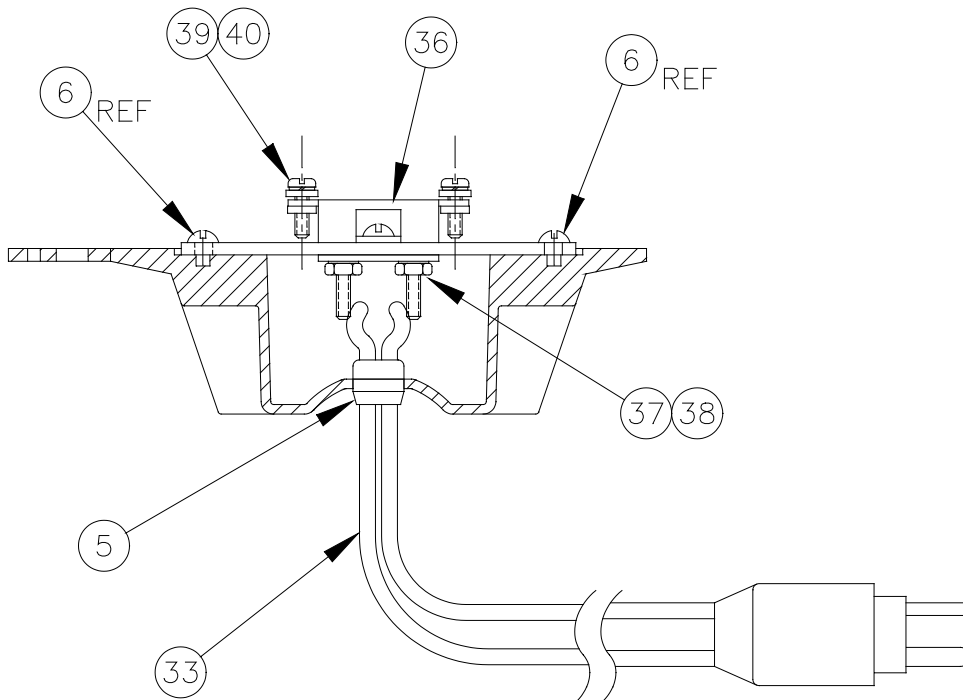
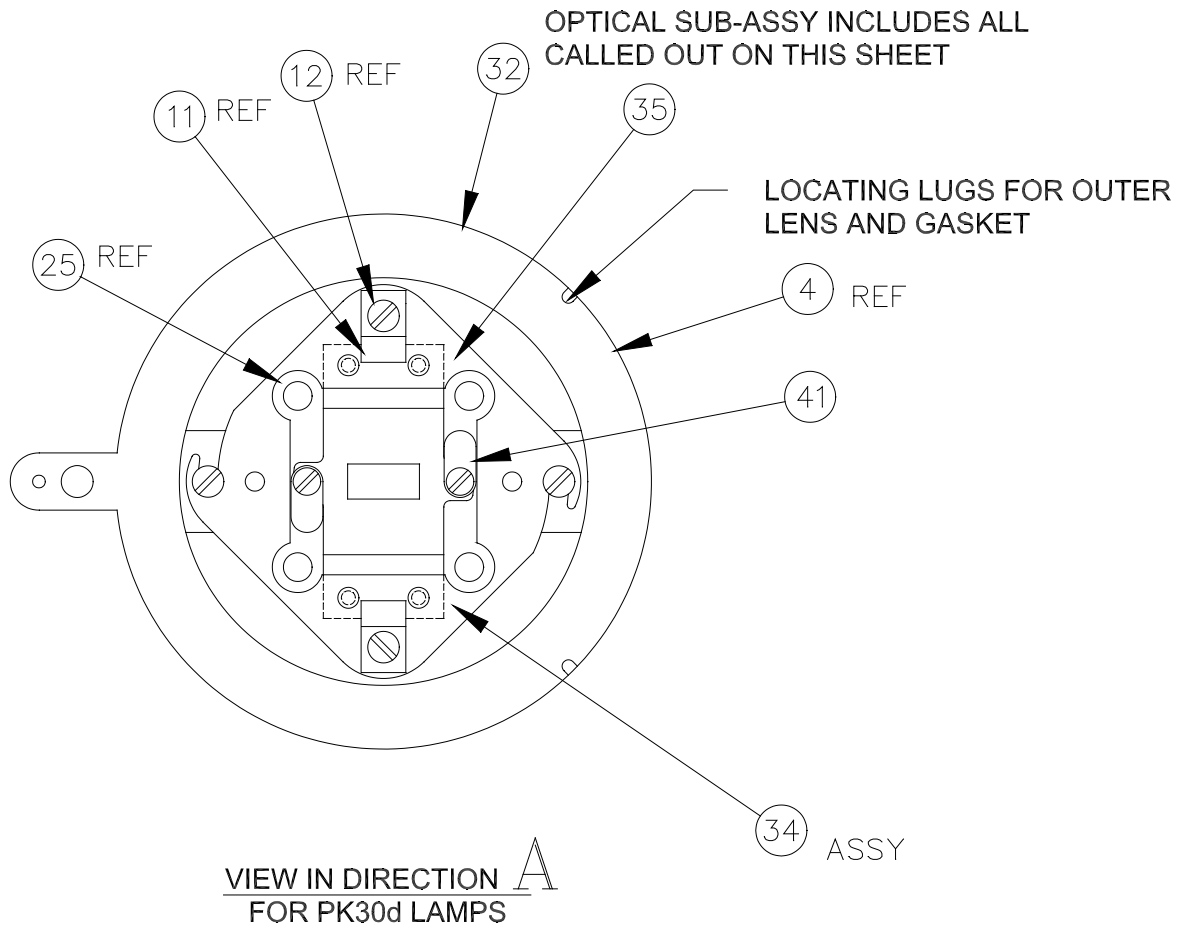


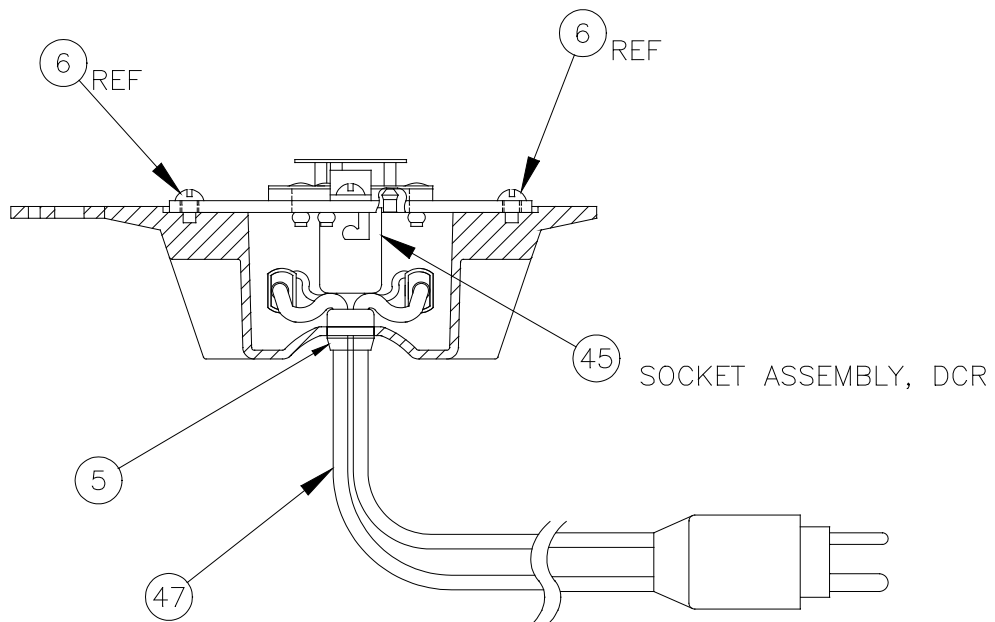
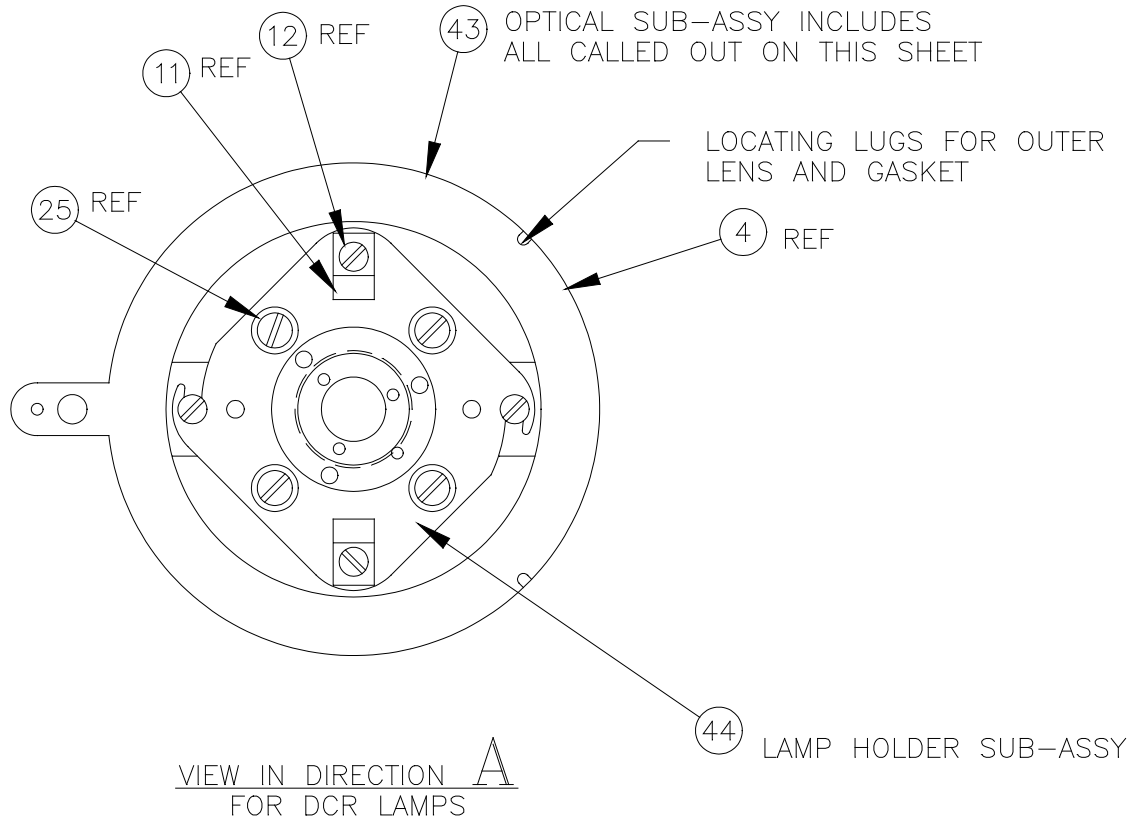


VIEW IN DIRECTION A  
FOR BI-PIN LAMPS









PARTS LIST  
PART NUMBER 40998 HIGH INTENSITY ELEVATED EDGELIGHT

ITEM NO.	PART NO.	QTY	DESCRIPTION
1			
2			
3	40992	1	OPTICAL SUB ASSY (14" STD HGT)
	40992-1	1	OPTICAL SUB ASSY (16,18, & 20" FIX. HGT)
	40992-2	1	OPTICAL SUB ASSY (22"-30" FIX. HGT)
4	40986	1	UPPER HOUSING
5	10047-621	1	RELIEF BUSHING
6	10A07-016D12	2	SCREW RD. HD. #8-32 x 3/8 LG.
7	40918	1	LEAD ASSY (14" STD HGT)
	40918-2	1	LEAD ASSY (16,18 & 20" FIX. HGT)
	40918-7	1	LEAD ASSY (22"-30" FIX. HGT)
8	40993	1	LAMP HOLDER ASSY
9	40749	1	LAMP HOLDER (SOCKET)
10	40987	1	LAMP HOLDER BRACKET
11	40990	2	SPRING CLIP, INNER LENS
12	10A07-016D12	2	SCREW, RD. HD., #8-32 x 3/8 LG.
13	40911	1	RETAINER, SOCKET
14	40972-XX	1	INNER DOME, ASSY
15	40969	1	SPACER
16	50366	1	SPRING, INNER FILTER HALVES
17	10050-23-C	A/R	INNER GLASS, CLEAR
	10050-23-Y	A/R	INNER GLASS, YELLOW
	10050-23-G	A/R	INNER GLASS, GREEN
	10050-23-R	A/R	INNER GLASS, RED
	10050-23-B	A/R	INNER GLASS, BLUE
18	40989	1	GASKET
19	10050-20	A/R	OUTER LENS, CLEAR
	10050-21	A/R	OUTER LENS, RED/GREEN
	10050-22	A/R	OUTER LENS, GREEN/RED
	10050-26	A/R	OUTER LENS, CLEAR/OPAQUE
	10050-27	A/R	OUTER LENS, OPAQUE/CLEAR
20			
21			
22	10038-31	1	LOCKPIN
23	40947	1	CLAMP BAND
24	40991	1	LABEL
25	10B06-019D20	4	SCREW, PAN HD., #10-32 x 5/8 LG.
26	40925	A/R	LAMP, 150 W, 6.6 A
	20172	A/R	LAMP, 200 W, 6.6 A
	10047-2477	A/R	LAMP, 200 W, 6.6 A, PK30d
	20496	A/R	LAMP, 115 W, 6.6 A, DCR
	20268	A/R	LAMP, 200 W, 6.6 A, DCR
27	40995-3	A/R	LAMP LABEL (150 W)
	40995-4	A/R	LAMP LABEL (200 W)
	40995-5	A/R	LAMP LABEL (100 W, PK30d)
	40995-6	A/R	LAMP LABEL (200 W, PK30d)

ITEM NO.	PART NO.	QTY	DESCRIPTION
27	40995-7	A/R	LAMP LABEL (115 W, DCR)
	40995-8	A/R	LAMP LABEL (200 W, DCR)
28	50186	A/R	COUPLING, FLANGIBLE 1 1/2"-12 UNF, HRLP
29	50184	A/R	COUPLING, FLANGIBLE, 2"-11 1/2 NPSM, HRLP
30	40878-2P	A/R	EXTENSION, 1" EMT, (14" FIX. HGT)
	40878-3P	A/R	EXTENSION, 1" EMT, (16" FIX. HGT)
	40878-4P	A/R	EXTENSION, 1" EMT, (18" FIX. HGT)
	40878-5P	A/R	EXTENSION, 1" EMT, (20" FIX. HGT)
	40878-6P	A/R	EXTENSION, 1" EMT, (22" FIX. HGT)
	40878-7P	A/R	EXTENSION, 1" EMT, (24" FIX. HGT)
	40878-8P	A/R	EXTENSION, 1" EMT, (26" FIX. HGT)
	40878-9P	A/R	EXTENSION, 1" EMT, (28" FIX. HGT)
	40878-10P	A/R	EXTENSION, 1" EMT, (30" FIX. HGT)
31	10A10-025D16	2	1/4-20 UNC X 1/2" LG HEX HD SCR
32	50113	1	OPTICAL SUB ASSY, PK30d LAMP (14" HGT)
	50113-1	1	OPTICAL SUB ASSY, PK30d LAMP (16,18 & 20" HGT)
	50113-2	1	OPTICAL SUB ASSY, PK30d LAMP (22-30" HGT)
33	50114	1	LEAD ASSY (14" STD HGT)
	50114-2	1	LEAD ASSY (16,18 & 20" FIX. HGT)
	50114-7	1	LEAD ASSY (22-30" FIX. HGT)
34	50112	1	LAMP MTG BRKT ASSY
35	50111	1	LAMP HOLDER BRKT, MODIFIED
36	50109	1	BRACKET, LAMP MTG.
37	11A22-013D	4	LOCKWASHER, INT. TOOTH, #6
38	10K01-013D	4	HEX NUT, #6-32
39	10A06-013D16	2	SCREW, PAN HD., #6-32 x 1/2 LG.
40	11A12-013D	2	WASHER, SPRING LOCK, #6
41	50110	2	TAB, LAMP HOLD-DOWN
42	41852	1	SUPPORT COLUMN-UPPER FITTING
43	50154	1	OPTICAL SUB ASSY, DCR LAMP (14" HGT)
	50154-1	1	OPTICAL SUB ASSY, DCR LAMP (16,18 & 20" HGT)
	50154-2	1	OPTICAL SUB ASSY, DCR LAMP (22-30" HGT)
44	50153	1	LAMP HOLDER, DCR, SUB-ASSY
45	50157	1	SOCKET ASSY, DCR
46	10037-603	2	STRAIN RELIEF
47	50156	A/R	LEAD ASSY, DCR (14" STD HGT)
	50156-2	A/R	LEAD ASSY, DCR (16,18 & 20" FIX. HGT)
	50156-7	A/R	LEAD ASSY, DCR (22-30" FIX. HGT)
48	10047-2223	A/R	LAMP, 150W, 6.6A, PK30d
49	40995-9	A/R	LAMP LABEL, 150W, PK30d