

Applications:

- Marine and watertight requirements
- Dusttight requirements
- Wastewater treatment plants
- Pulp and paper production
- Aluminum processing facilities
- Salt and potash mines
- Corrosive environments
- Façade security lighting

Features:

- 150-400W HID
- Trunnion attachment points positioned at fixture balance point; allows for crane boom mounting with optional bracket
- Choice of mounting arrangements in surface, pole or wall
- Integral safety cable attachment points
- Field replaceable thermal shock-resistant tempered glass lens
- High temperature silicone gasket provides a watertight seal
- Two 3/4" NPT entries for through feed/looping wiring; M25 entry reducers available
- Tested and approved over 180° aiming range, enabling face up through face down mounting
- Tool-less entry via eight stainless steel over the center cam latches
- Captive lens frame with stainless steel door retainers for easy lamp replacement
- Wide NEMA 6x6 beam spread; 5x5 beam spread (optional)

Certifications and compliances:

- UL1598 – Luminaires
- CSA C22.2 No. 250-04
- Type 4X
- Certified IP66 and IP67
- ABS



Standard materials:

- Housing and lens frame – 316 stainless steel
- Lens – tempered glass
- Gasket – one-piece silicone
- Mounting brackets – 316 stainless steel
- Reflector – hammertone aluminum
- Optional guard – 316 stainless steel
- Optional top and side visor – 316 stainless steel
- Lamp holder – porcelain

Technical specifications:

- Entries – two 3/4" NPT; M25 reducer entries available
- Wind rating – EPA: 4.38 at vertical
- Lamp type – high pressure sodium; metal halide^A; pulse start metal halide (lamps not provided)
- Lamp holder – mogul base
- Ballast – multi-tap 120/208/240/277V, 60 Hz (standard); 220, 347 or 480V, 60 Hz (optional); 220/240V, 50 Hz (optional); remote ballast suitable for use up to 50 feet from luminaire (optional)

Mounting option:

- Trunnion mount

Photometrics:

- Complete photometrics can be found at www.crouse-hinds.com/photometrics

^ANot available in the U.S.

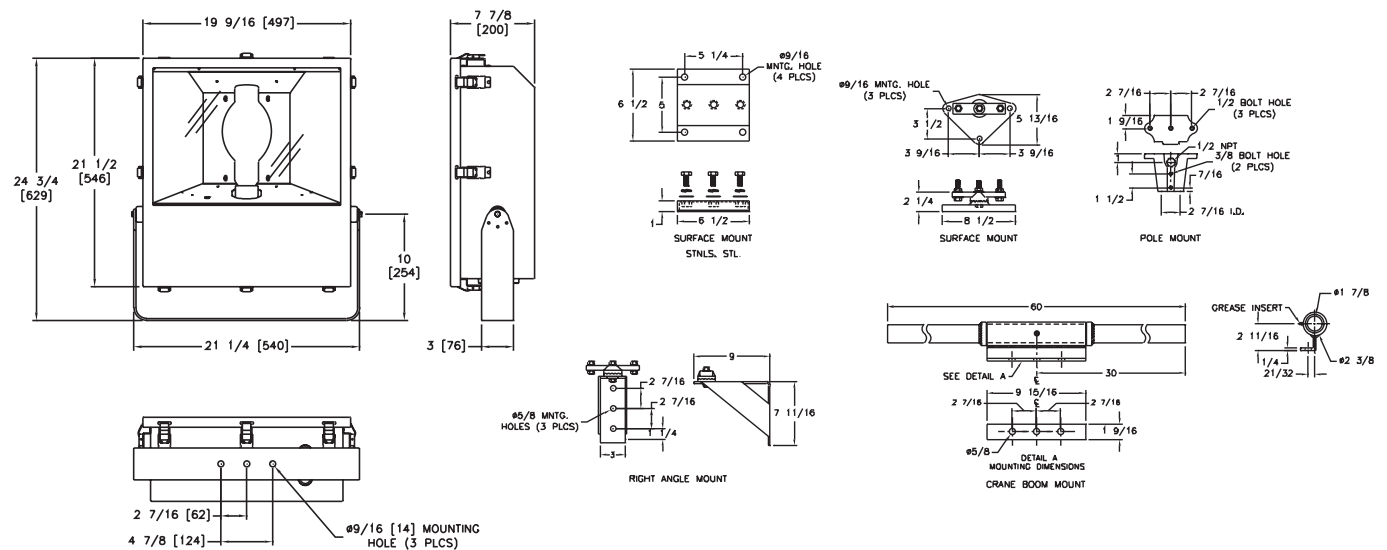
Options:

Description	Suffix
• Auxiliary quartz light (light continuator).....	C
• Fused ballast.....	F
• Instant restrike.....	I
<i>Up to 150W high pressure sodium only</i>	
• Instant restrike lamp.....	LI
<i>250W and 400W high pressure sodium only</i>	
• Stainless steel guard	G[Ⓟ]
• Top and side visor	V[Ⓟ]
• Narrow NEMA 4x6 beam pattern.....	N
• Lamp included	L
• 220V, 50 Hz	225
• 220V, 60 Hz	226
• 240V, 50 Hz	245
• 347V, 60 Hz	346
• 480V, 60 Hz	486

Ordering information:

Cat. #	Lamp type	Watts	Weight (lbs.)	ANSI lamp type	Ambient temperature °C	Supply wire °C
IMFLS15IB	High pressure sodium	150	47.5	S55	40/55	90/110
IMFLS25IB	High pressure sodium	250	56.0	S50	40/55	90/110
IMFLS4IB	High pressure sodium	400	58.5	S51	40/55	90/110
IMFHS17IB [Ⓟ]	Metal halide	175	51.5	M57	40/55	90/110
IMFHS25IB [Ⓟ]	Metal halide	250	50.5	M58	40/55	90/110
IMFHS4IB [Ⓟ]	Metal halide	400	56.5	M59	40/55	90/110
IMFPS25IB	Pulse start metal halide	250	50.5	M153	40/55	90/110
IMFPS4IB	Pulse start metal halide	400	56.5	M155	40/55	90/110

Dimensions (in inches):



[Ⓟ] Cannot be field installed; specify at order placement.

[Ⓟ] Not available in the U.S.