

# Pauluhn Vulcan hazardous area floodlights

Cl. I, Div. 2, Groups A, B, C, D  
Cl. I, Zone 2, Groups IIA, IIB, IIB + H<sub>2</sub>, IIC  
Type 4X  
IP66, IP67

6L

## Applications:

- Marine and watertight requirements
- Oil and gas exploration and production
- Petrochemical facilities
- Wastewater treatment plants
- Pulp and paper production
- Aluminum processing facilities
- Salt and potash mines
- High ambient environments
- Corrosive environments

## Features:

- 150-400W HID
- Trunnion attachment points positioned at fixture balance point; allows for crane boom mounting with optional bracket
- Choice of mounting arrangements in surface, pole or wall
- Integral safety cable attachment points
- Field replaceable thermal shock-resistant tempered glass lens
- High temperature silicone gasket provides a watertight seal
- Two 3/4" NPT entries for through feed/looping wiring; M25 entry reducers available
- Tested and approved over 180° aiming range, enabling face up through face down mounting
- Tool-less entry via eight stainless steel over the center cam latches
- Captive lens frame with stainless steel door retainers for easy lamp replacement
- Wide NEMA 6x6 beam spread; 5x5 beam spread (optional)

## Certifications and compliances:

- Class I, Division 2, Groups A, B, C, D
- Class I, Zone 2, Groups IIA, IIB, IIB + H<sub>2</sub>, IIC
- UL844 – Hazardous Locations
- UL1598A – Luminaires for Marine Vessels
- CSA C22.2 No. 137-M1981
- Type 4X
- Certified IP66 and IP67
- Marine Outside Type Saltwater
- ABS



## Standard materials:

- Housing and lens frame – 316 stainless steel
- Lens – tempered glass
- Gasket – one-piece silicone
- Mounting brackets – 316 stainless steel
- Reflector – hammertone aluminum
- Optional guard – 316 stainless steel
- Optional top and side visor – 316 stainless steel
- Lamp holder – porcelain

## Technical specifications:

- Entries – two 3/4" NPT; M25 reducer entries available
- Wind rating – EPA: 4.38 at vertical
- Lamp type – high pressure sodium; metal halide<sup>A</sup>; pulse start metal halide (lamps not provided)
- Lamp holder – mogul base
- Ballast – multi-tap 120/208/240/277V, 60 Hz (standard); 220, 347 or 480V, 60 Hz (optional); 220/240V, 50 Hz (optional); remote ballast suitable for use up to 50 feet from luminaire (optional)

## Mounting option:

- Trunnion mount

## Photometrics:

- Complete photometrics can be found at [www.crouse-hinds.com/photometrics](http://www.crouse-hinds.com/photometrics)

<sup>A</sup>Not available in the U.S.

# Pauluhn Vulcan hazardous area floodlights

Cl. I, Div. 2, Groups A, B, C, D  
Cl. I, Zone 2, Groups IIA, IIB, IIB + H<sub>2</sub>, IIC  
Type 4X  
IP66, IP67

6L

## Options:

Description	Suffix
• Auxiliary quartz light (light continuator).....	<b>C</b>
• Instant restrike.....	<b>I</b>
<i>Up to 150W high pressure sodium only</i>	
• Instant restrike lamp.....	<b>LI</b>
<i>250W and 400W high pressure sodium only</i>	
• Stainless steel guard .....	<b>G<sup>Ⓟ</sup></b>
• Top and side visor .....	<b>V<sup>Ⓟ</sup></b>
• Narrow NEMA 4x6 beam pattern.....	<b>N</b>
• Lamp included .....	<b>L</b>
• 220V, 50 Hz .....	<b>225</b>
• 220V, 60 Hz .....	<b>226</b>
• 240V, 50 Hz .....	<b>245</b>
• 347V, 60 Hz .....	<b>346</b>
• 480V, 60 Hz .....	<b>486</b>

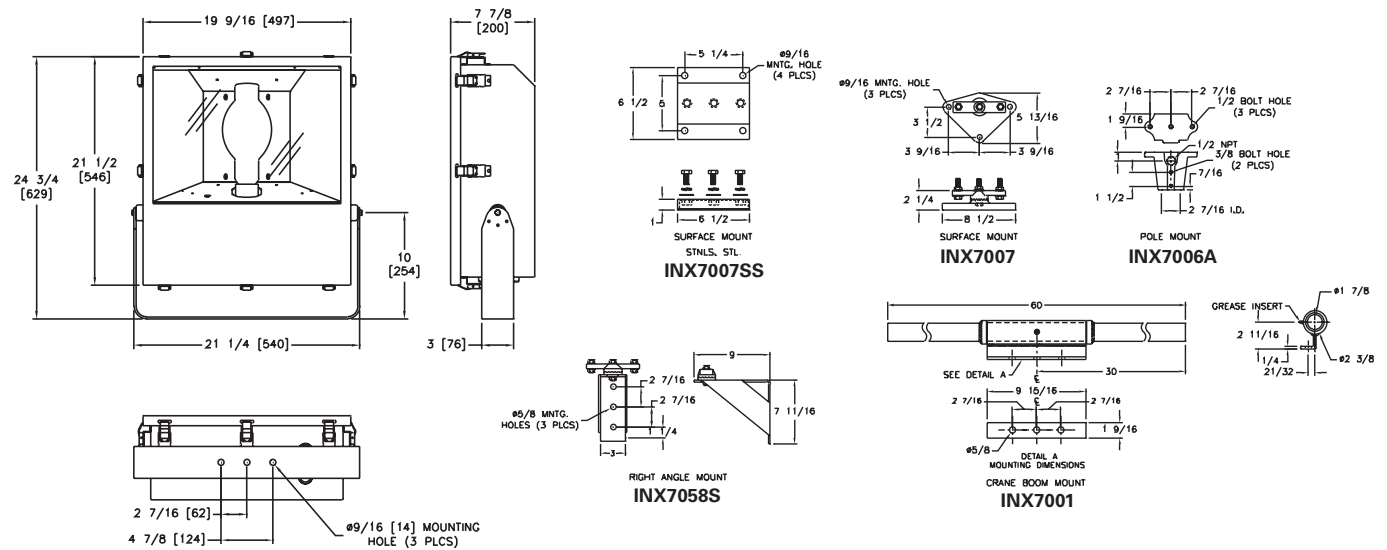
## Accessories (ordered separately):

Description	Cat. #
• Replacement lamp holder.....	<b>INX4004</b>
• Replacement lens.....	<b>INX2203</b>
• Replacement gasket.....	<b>GKT5093</b>
• Replacement guard .....	<b>INX1064</b>
• Replacement visor .....	<b>INX6261</b>
• M25 cable entry reducers .....	<b>INX6848</b>
<i>Set of two</i>	
• Stainless steel surface mount.....	<b>INX7007SS</b>
• Aluminum pole mount.....	<b>INX7006A</b>
• Stainless steel pole mount.....	<b>INX7006SS</b>
• Stainless steel pole mount (no cable through feed).....	<b>INX7091</b>
• Stainless steel right angled wall mount .....	<b>INX7058S</b>
• Painted steel crane boom mount .....	<b>INX7001</b>
• Safety cable (48" stainless steel, snap hook) .....	<b>SC30H</b>

## Ordering information:

Cat. #	Lamp type	Watts	Weight (lbs.)	ANSI lamp type	T-code	Ambient temperature °C	Supply wire °C
<b>RBFLS15IB</b>	High pressure sodium	150	47.5	S55	T1	40/55	90/105
<b>RBFLS25IB</b>	High pressure sodium	250	56.0	S50	T1	40/55	90/105
<b>RBFLS4IB</b>	High pressure sodium	400	58.5	S51	T1	40/55	90/105
<b>RBFHS17IB<sup>Ⓞ</sup></b>	Metal halide	175	51.5	M57	T1	40/55	90/105
<b>RBFHS25IB<sup>Ⓞ</sup></b>	Metal halide	250	50.5	M58	T1	40/55	90/105
<b>RBFHS4IB<sup>Ⓞ</sup></b>	Metal halide	400	56.5	M59	T1	40/55	90/105
<b>RBFPS25IB</b>	Pulse start metal halide	250	50.5	M153	T1	40/55	90/105
<b>RBFPS4IB</b>	Pulse start metal halide	400	56.5	M155	T1	40/55	90/105

## Dimensions (in inches):



<sup>Ⓟ</sup> Cannot be field installed; specify at order placement.

<sup>Ⓞ</sup> Not available in the U.S.