

## Applications:

V-Series incandescent luminaires are used:

- Indoors or outdoors in industrial locations where enclosed and gasketed fixtures are required
- In tunnels, building entrances and similar locations, where moisture, dirt, chemicals, vibration or rough usage are a problem
- For flush or surface mounting on ceiling or wall, with or without a cast outlet box, pendant or in conduit systems

## Features:

- Designed to exclude dirt, moisture and corrosive vapors from the interior of the fixtures and the conduit system
- Several body styles provide a wide variety of mountings, while all use the same globes, guards and optional accessories
- Rugged and corrosion-resistant

## Certifications and compliances:

- Wet locations
- NEMA 3, 3R
- UL standard: 1598

## Ordering information:



VDA



VC



VG



VJ



VD

Description	Cat. #	Cat. #	Cat. #	Cat. #	Cat. #
With plain globe and guard	VDA2759	VC2759	VG2759	VJ2759	VD2759
Without globe and guard	VDA275	VC275	VG275	VJ275	VD275

## Standard materials:

- Bodies – Feraloy iron alloy
- Guards – copper-free aluminum
- Globes – glass
- Reflectors – Krydon fiberglass-reinforced polyester

## Standard finishes:

- Feraloy iron alloy – electrogalvanized and aluminum acrylic paint
- Copper-free aluminum – natural
- Krydon – high reflectance white

## Options:

- | Description                         | Suffix                                |
|-------------------------------------|---------------------------------------|
| • Corro-free epoxy powder coat..... | <b>S752</b>                           |
| • Plastic polycarbonate globe.....  | <b>Ordered separately (see below)</b> |

## Size ranges:

- ¾" hubs
- Maximum lamp size:
  - Glass globes: 150W, A23
  - Polycarbonate: 75W, A33



## Photometrics:

- Complete photometrics can be found at [www.crouse-hinds.com/photometrics](http://www.crouse-hinds.com/photometrics)

## Glass globes and guards



V63



V911

Color	Cat. #	Globe size	Cat. #
Clear (heat-resisting)	V63	6¾"	V911
Green	VN72		
Blue	VN73		
Red	VN75		
Amber	VN76		

## Polycarbonate globes

### Applications:

Polycarbonate globes are used:

- In food processing plants, canneries, dairies, breweries and bakeries
- In emergency lighting
- Emergency police and fire alarm boxes

### Features:

- Polycarbonate globes are shatterproof, preclude contamination of food products with broken particles of glass
- Comply with U.S. Dept. of Agriculture specification for food processing plants



V470

Color	Cat. #
Natural	V470
Red	V475

**Note:** For use less guard.

# V-Series incandescent luminaires

## Accessories

### Reflectors

(Must be used with V911 guard)



Dome



Angle

Lamp size	Dia.	Cat. #
<b>Dome</b>		
50-150W	12"	RD60
<b>30° angle</b>		
50-150W	12"	RA60

**Note:** Angle reflector cannot always be used with bracket style fixtures. Check distance from mounting surface to center of body against reflector size to determine if reflector will fit.

### Receptacle (medium base)



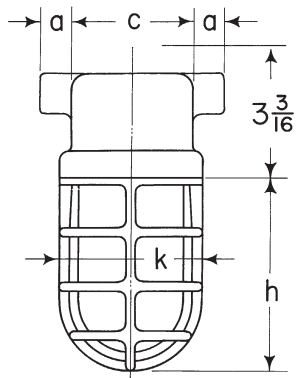
Description	Cat. #
Medium base receptacle	V46

### Gasket

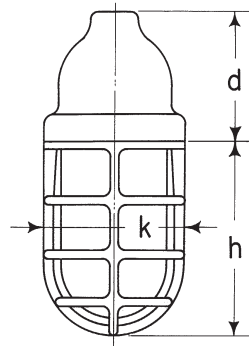


Description	Cat. #
Gasket	GASK213

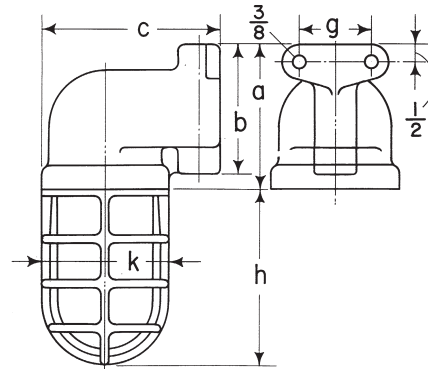
## Dimensions (in inches):



VC



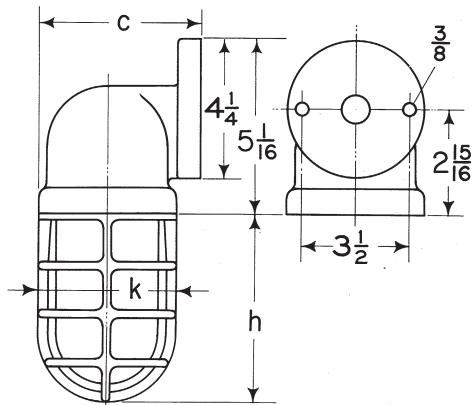
VDA



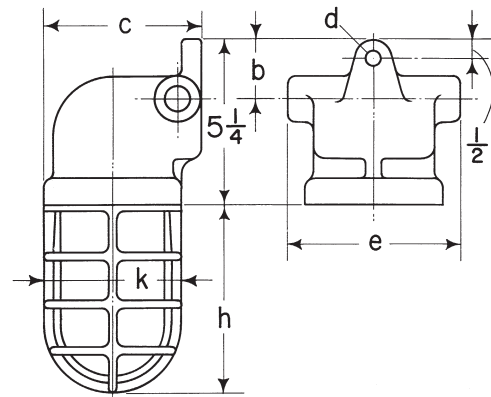
VD

Hub size	a	c	d	h	k
1/2"	7/8	3 11/16	4	6 7/16	4 9/16
3/4"	7/8	3 11/16	4	6 7/16	4 9/16

Hub size	a	b	c	g	h	k
1/2"	4 5/16	4 3/16	5 5/16	2 1/2	6 7/16	4 9/16
3/4"	4 5/16	4 3/16	6 7/16	2 3/4	6 7/16	4 9/16



VG



VJ

Hub size	c	h	k
1/2"	4 7/8	6 7/16	4 9/16
3/4"	4 7/8	6 7/16	4 9/16

Hub size	b	c	d	e	h	k
1/2"	1 13/16	4 7/8	3/8	5 5/8	6 7/16	4 9/16
3/4"	1 13/16	4 7/8	3/8	5 5/8	6 7/16	4 9/16