

### Applications:

- Recessed mount
- Marine interior
- Pilot house
- State room
- Office
- Corridor/passageway
- Galley

### Features:

- Multi-voltage electronic ballast resistant to brownouts or voltage and frequency fluctuations
- Low profile design
- Tool-less entry and hinged lens frame for easy relamping
- Filter tube options allow colored lamps to operate on a separate circuit for darken ship mode
- 3- and 4-lamp models are provided with two ballasts for independent switching or color effects
- Optional self-contained emergency battery back-up ballasts with test switch
- Optional long life T5 lamps available upon request (contact factory)

### Certifications and compliances:

- UL1598A – Luminaires for Marine Vessels
- UL924 – Emergency Lighting Equipment
- Conforms to IP52
- Marine Inside Drip Proof Type
- ABS

### Standard materials and finishes:

- Housing – Type 5052H32 aluminum with an electrostatically applied polyester powder coat finish
- Lens frame – Type 6063T6 aluminum with an electrostatically applied polyester powder coat finish
- Lens – flat prismatic DR acrylic; flat white or prismatic drop dish (optional)
- Reflector – Type 5052H32 aluminum with an electrostatically applied white polyester powder coat finish; minimum 90% reflectance
- Lamp holder – high temperature PBT locking sockets

### Photometrics:

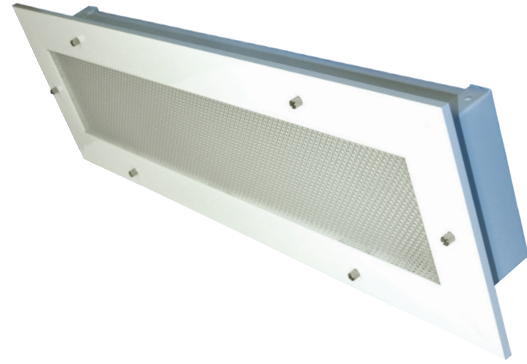
- Complete photometrics can be found at [www.crouse-hinds.com/photometrics](http://www.crouse-hinds.com/photometrics)

<sup>A</sup>Contact factory for optional higher ambient models.

<sup>B</sup>For T5 and T5HO, EM ballast is fixed voltage, 120 or 277V, 50/60 Hz.

<sup>C</sup>Lamps are not included unless option 'L' or 'LL' is specified.

<sup>D</sup>Not available on 2 ft., 2-lamp models when EMT2/EMT3 option is specified.



### Technical specifications:

- Entries – 1/2" and 3/4" NPT knockouts at each end
- Terminal block – internal 3-pole
- Ballast – 120-277V, 50/60 Hz electronic

Watts	Ballast / socket type	ANSI lamp code	Starting temperature	Max. ambient °C <sup>A</sup>	Supply wire °C
17	T8 bi-pin G13	F17-T8	0°F (-18°C)	55	90
32	T8 bi-pin G13	F32-T8	-20°F (-29°C)	55	90
14/28	T5 mini bi-pin G5	F14/F28-T5	0°F (-18°C)	55	90
24/54	T5HO mini bi-pin G5	F24/F54-T5HO	-20°F (-29°C)	55	90

- Emergency battery back-up ballast – optional, self-contained 90 minute minimum for all lamp types; 120 minute minimum for F32T8 one lamp; starting temperature 32°F/0°C

### Mounting option:

- Recessed ceiling mount

### Options:

Description	Suffix
• Emergency battery back-up ballast, one lamp, 277V max., test switch.....	<b>EMT2<sup>B</sup></b>
• Emergency battery back-up ballast, high lumen, one lamp, 277V max., test switch.....	<b>EMT3<sup>B</sup></b>
• Drop dish prismatic lens.....	<b>H</b>
<i>Replace suffix J in catalog number</i>	
• Flat white lens.....	<b>E</b>
<i>Replace suffix J in catalog number</i>	
• Lamps.....	<b>L<sup>C</sup></b>
• Long life lamps (F54T5HO only).....	<b>LL<sup>C</sup></b>
• Red filter tube with separate ballast (one lamp).....	<b>RV-10<sup>D</sup></b>
<i>Not available in 24W or 54W</i>	
• Red filter tube (all lamps).....	<b>RV</b>
<i>Not available in 24W or 54W</i>	
• Blue filter tube with separate ballast (one lamp).....	<b>BV-10<sup>D</sup></b>
<i>Not available in 24W or 54W</i>	
• Blue filter tube (all lamps).....	<b>BV</b>
<i>Not available in 24W or 54W</i>	
• Yellow filter tube with separate ballast (one lamp).....	<b>YV-10<sup>D</sup></b>
<i>Not available in 24W or 54W</i>	
• Yellow filter tube (all lamps).....	<b>YV</b>
<i>Not available in 24W or 54W</i>	

## Ordering information:

Cat. #	Nominal length	Lamp type	No. of lamps / nominal lamp wattage	Weight (lbs.)
FRS214J	2 ft.	F14T5	2 x 14W	8.0
FRS314J	2 ft.	F14T5	3 x 14W	13.5
FRS414J	2 ft.	F14T5	4 x 14W	14.0
FRS217J	2 ft.	F17T8	2 x 17W	8.0
FRS317J	2 ft.	F17T8	3 x 17W	13.5
FRS417J	2 ft.	F17T8	4 x 17W	14.0
FRS224J	2 ft.	F24T5HO	2 x 24W	8.0
FRS324J	2 ft.	F24T5HO	3 x 24W	13.5
FRS424J	2 ft.	F24T5HO	4 x 24W	14.0
FRS228J	4 ft.	F28T5	2 x 28W	12.0
FRS328J	4 ft.	F28T5	3 x 28W	20.0
FRS428J	4 ft.	F28T5	4 x 28W	20.5
FRS232J	4 ft.	F32T8	2 x 32W	12.0
FRS332J	4 ft.	F32T8	3 x 32W	20.0
FRS432J	4 ft.	F32T8	4 x 32W	20.5
FRS254J	4 ft.	F54T5HO	2 x 54W	12.0
FRS354J	4 ft.	F54T5HO	3 x 54W	20.0
FRS454J	4 ft.	F54T5HO	4 x 54W	20.5

## Accessories (ordered separately):

Cat. #	Description	Cat. #	Description
FX5350	Ballast 120-277 VAC, 50/60 Hz, 1 x 14W	FX2034	Lens, 1- and 2-lamp, for 2 ft. models
FX5174	Ballast 120-277 VAC, 50/60 Hz, 1 x 17W	FX2035	Lens, 3- and 4-lamp, for 2 ft. models
FX5307	Ballast 120-277 VAC, 50/60 Hz, 1 x 24W	FX2036	Lens, 1- and 2-lamp, for 4 ft. models
FX5350	Ballast 120-277 VAC, 50/60 Hz, 1 x 28W	FX2037	Lens, 3- and 4-lamp, for 4 ft. models
FX5221	Ballast 120-277 VAC, 50/60 Hz, 1 x 32W	FX4068	Lamp holder, twist lock
FX5305	Ballast 120-277 VAC, 50/60 Hz, 1 x 54W	FX4064F	Lamp holder, stationary T5
FX5350	Ballast 120-277 VAC, 50/60 Hz, 2 x 14W	FX4064P	Lamp holder, spring loaded T5
FX5340	Ballast 120-277 VAC, 50/60 Hz, 2 x 17W	FX3001	Terminal block, 2-pole
FX5307	Ballast 120-277 VAC, 50/60 Hz, 2 x 24W	CX3070	Terminal block, 4-pole
FX5350	Ballast 120-277 VAC, 50/60 Hz, 2 x 28W	FX2193RED	Filter tube, red 17W T8
FX5340	Ballast 120-277 VAC, 50/60 Hz, 2 x 32W	FX2198RED	Filter tube, red 32W T8
FX5305	Ballast 120-277 VAC, 50/60 Hz, 2 x 54W		
FX3573	Lamp, 14W, F14T5		
FX3528	Lamp, 17W, F17T8		
FX3568	Lamp, 24W, F24T5HO		
FX3574	Lamp, 28W, F28T5		
FX3527	Lamp, 32W, F32T8		
FX3567	Lamp, 54W, F54T5HO		

## Dimensions (in inches):

