

Applications:

- 300mm continuous plank ceiling systems
- Marine interior
- Pilot house
- State room
- Office
- Corridor/passageway
- Galley
- Low profile applications

Features:

- Custom designed for 300mm continuous linear plank ceiling systems
- Parallel or perpendicular mounting using the same luminaire
- No trim kit or additional hardware required
- Corrosion-resistant housing
- Multi-voltage electronic ballast resistant to brownouts or voltage and frequency fluctuations
- Low profile depth allows for installation in constricted ceiling voids
- Self-retained, spring loaded lens frame
- Optional pre-wired through feed terminal blocks
- 2 foot (600mm) and 4 foot (1200mm) models
- Filter tube options allow colored lamps to operate on a separate circuit for darken ship mode
- 3-lamp models are provided with two ballasts for independent switching or color effects
- Parabolic louver option for glare reduction
- Optional self-contained emergency battery back-up ballasts
- Optional long life T5 lamps available upon request (contact factory)

Certifications and compliances:

- UL1598A – Luminaires for Marine Vessels
- UL924 – Emergency Lighting Equipment
- B-15 fire rating^A (when integrated with B-15 fire rated ceiling and properly insulated)
- Conforms to IP20
- Marine Inside Type
- ABS

Standard materials and finishes:

- Housing – galvanized steel with an electrostatically applied polyester powder coat finish
- Lens frame – Type 6063T6 aluminum with an electrostatically applied polyester powder coat finish
- Lens – flat prismatic DR acrylic; translucent white (optional)
- Reflector – Type 5052H32 aluminum with an electrostatically applied white polyester powder coat finish; minimum 90% reflectance
- Lamp holder – polycarbonate



Technical specifications:

- Entries – 1/2" and 3/4" NPT knockout on each end and side
- Lamp holder – spring loaded, twist lock for linear fluorescent; fixed 2G11 for compact fluorescent
- Terminal block – optional terminal block or through feed, pre-wired dual terminal block is available
- Ballast – 120-277V, 50/60 Hz electronic, except F20 and F40 T12 bi-pin, which are 120V, 60 Hz

Watts	Ballast / socket type	ANSI lamp code	Starting temperature	Max. ambient °C ^B	Supply wire °C
17	T8 bi-pin G13	F17-T8	0°F (-18°C)	55	90
32	T8 bi-pin G13	F32-T8	-20°F (-29°C)	55	90
40	4-pin 2G11	FT40-CF	0°F (-18°C)	40	90
14/28	T5 mini bi-pin G5	F14/F28-T5	0°F (-18°C)	55	90
24/54	T5HO mini bi-pin G5	F24/F54-T5HO	-20°F (-29°C)	55	90

- Emergency battery back-up ballast – optional, self-contained 90 minute minimum for all lamp types; 120 minute minimum for F32T8 one lamp; starting temperature 32°F/0°C

Mounting option:

- Recessed ceiling mount for 300mm linear plank ceilings

Photometrics:

- Complete photometrics can be found at www.crouse-hinds.com/photometrics

^AB-15 rated covers must be purchased separately.

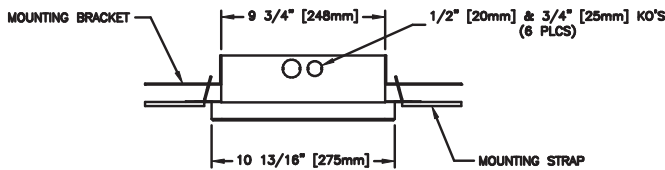
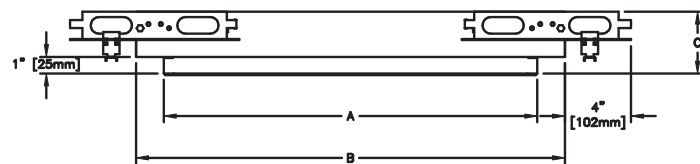
^BContact factory for optional higher ambient models.

Options:

Description	Suffix
• Emergency battery back-up ballast, one lamp, 277V max.	EM2 Ⓞ
• Emergency battery back-up ballast, high lumen, one lamp, 277V max.....	EM3 Ⓞ
• Emergency battery back-up ballast, one lamp, 277V max., test switch.....	EMT2 Ⓞ
• Emergency battery back-up ballast, high lumen, one lamp, 277V max., test switch.....	EMT3 Ⓞ
• Lamps.....	L Ⓞ
• Long life lamps (F54T5HO only).....	LL Ⓞ
• Terminal block.....	T
• Pre-wired through feed.....	FT
• Translucent white lens.....	E
• 220V, 50 Hz ballast (T12 bi-pin only).....	225
• 220V, 60 Hz ballast (T12 bi-pin only).....	226
• 277V, 60 Hz ballast (T12 bi-pin only).....	276
• Parabolic louver.....	P
<i>2-lamp T5 and T8 only</i>	
• Metallized square grids.....	C
• Red filter tube with separate ballast (one lamp).....	RV-1 Ⓞ
• Red filter tube (all lamps).....	RV Ⓞ
• Blue filter tube with separate ballast (one lamp).....	BV-1 Ⓞ
• Blue filter tube (all lamps).....	BV Ⓞ
• Dimming ballast.....	DIM
<i>Not available for F20T12</i>	

Note: Contact factory for additional louvers and grids.

Dimensions:



	A	B	C
2 x 14W, 17W, 20W, 24W	22 ⁵ / ₈ (575mm)	27 (686mm)	3 ³ / ₄ (95mm)
3 x 14W, 17W, 24W	22 ⁵ / ₈ (575mm)	27 (686mm)	4 ⁵ / ₈ (117mm)
2 or 3 x 40W CF	22 ⁵ / ₈ (575mm)	27 (686mm)	4 ⁵ / ₈ (117mm)
2 or 3 x 25W, 28W T8	34 ⁷ / ₈ (875mm)	38 ¹⁵ / ₁₆ (990mm)	4 ⁵ / ₈ (117mm)
2 x 28W, 32W, 40W, 54W	46 ¹ / ₄ (1175mm)	50 ⁵ / ₈ (1286mm)	3 ³ / ₄ (95mm)
3 x 32W, 54W	46 ¹ / ₄ (1175mm)	50 ³¹ / ₃₂ (1295mm)	4 ⁵ / ₈ (117mm)
4 or 6 x 40W CF	46 ¹ / ₄ (1175mm)	50 ³¹ / ₃₂ (1295mm)	4 ⁵ / ₈ (117mm)

Ⓞ For T5 and T5HO, EM ballast is fixed voltage, 120 or 277V, 50/60 Hz.

Ⓞ Lamps are not included unless option 'L' or 'LL' is specified.

Ⓞ Not available in 24W, 40W compact fluorescent or 54W.

Ordering information:

Cat. #	Nominal length	Lamp type	No. of lamps / nominal lamp wattage	Weight (lbs.)
FRD214	2 ft.	F14T5	2 x 14W	11.0
FRD314	2 ft.	F14T5	3 x 14W	12.5
FRD217	2 ft.	F17T8	2 x 17W	11.0
FRD317	2 ft.	F17T8	3 x 17W	12.5
FRD220	2 ft.	F20T12	2 x 20W	13.0
FRD224	2 ft.	F24T5HO	2 x 24W	11.0
FRD324	2 ft.	F24T5HO	3 x 24W	12.5
FRD225	3 ft.	F25T8	2 X 25W	17.0
FRD325	3 ft.	F25T8	3 x 25W	18.5
FRD228	4 ft.	F28T5	2 x 28W	11.0
FRD328	4 ft.	F28T5	3 x 28W	12.5
FRD232	4 ft.	F32T8	2 x 32W	23.0
FRD332	4 ft.	F32T8	3 x 32W	23.5
FRD240	4 ft.	F40T12/ES	2 x 34W	27.0
FRD254	4 ft.	F54T5HO	2 x 54W	23.0
FRD354	4 ft.	F54T5HO	3 x 54W	23.5
FRDC240	2 ft.	FT40	2 x 40W	11.0
FRDC340	2 ft.	FT40	3 x 40W	11.5
FRDC440	4 ft.	FT40	4 x 40W	23.0
FRDC640	4 ft.	FT40	6 x 40W	24.0

Accessories (ordered separately):

Cat. #	Description
FX5350	Ballast 120-277 VAC, 50/60 Hz, 1 x 14W
FX5174	Ballast 120-277 VAC, 50/60 Hz, 1 x 17W
FX5307	Ballast 120-277 VAC, 50/60 Hz, 1 x 24W
FX5350	Ballast 120-277 VAC, 50/60 Hz, 1 x 28W
FX5221	Ballast 120-277 VAC, 50/60 Hz, 1 x 32W
FX5305	Ballast 120-277 VAC, 50/60 Hz, 1 x 54W
FX5350	Ballast 120-277 VAC, 50/60 Hz, 2 x 14W
FX5340	Ballast 120-277 VAC, 50/60 Hz, 2 x 17W
FX5307	Ballast 120-277 VAC, 50/60 Hz, 2 x 24W
FX5350	Ballast 120-277 VAC, 50/60 Hz, 2 x 28W
FX5340	Ballast 120-277 VAC, 50/60 Hz, 2 x 32W
FX5272	Ballast 120-277 VAC, 50/60 Hz, 2 x 40W
FX5305	Ballast 120-277 VAC, 50/60 Hz, 2 x 54W
FX5009	Ballast 120V, 60 Hz, 1 x 20W
FX5326	Ballast 120V, 60 Hz, 1 x 34W
FX5326	Ballast 120V, 60 Hz, 1 x 40W
FX5001	Ballast 120V, 60 Hz, 2 x 20W
FX5004	Ballast 120V, 60 Hz, 2 x 34W
FX5004	Ballast 120V, 60 Hz, 2 x 40W
FX3573	Lamp, 14W, F14T5
FX3574	Lamp, 28W, F28T5
FX3568	Lamp, 24W, F24T5HO
FX3567	Lamp, 54W, F54T5HO
FX3577	Lamp, 54W, long life, F54T5HO
FX3528	Lamp, 17W, F17T8
FX3527	Lamp, 32W, F32T8
FX3569	Lamp, 25W, F25T8
FX3506	Lamp, 20W, F20T12
FX3504ES	Lamp, 34W, F40T12ES
FX3533	Lamp, 40W CF, FT40
FX2228	Lens, prismatic, 2 ft. models
FX2229	Lens, prismatic, 4 ft. models
FX4032S	Lamp holder, spring loaded, T8 & T12 bi-pin
FX4036	Lamp holder, spring loaded, T8 & T12 bi-pin, set of 2
FX4065	Lamp holder, T5 & T5HO
FX4043	Lamp holder, 40W CF
FX3048	Terminal block, 3-pole
FX2193RED	Filter tube, red 17W T8
FX2192RED	Filter tube, red 20W T12
FX2195RED	Filter tube, red 32W T8
FX2194RED	Filter tube, red 34W T12
FX2192BLU	Filter tube, blue 20W T12
FX6816	B-15 covers, 2 ft.
FX6817	B-15 covers, 4 ft.