

Applications:

- Marine and watertight requirements
- Gangway/walkway steps

Features:

- Low profile flush mount step light
- 814 models include louver to reduce glare and direct light
- High temperature silicone gasket provides a watertight seal

Certifications and compliances:

- UL1598A – Luminaires for Marine Vessels
- Conforms to IP66
- Marine Outside Type Saltwater
- ABS

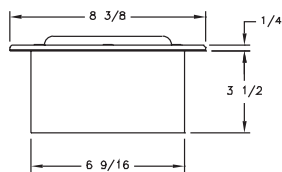
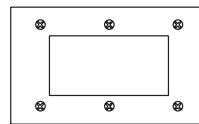
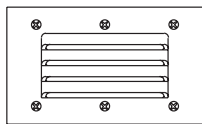
Standard materials and finishes:

- Housing and lens frame – cast copper-free aluminum
- Covers – cast copper-free aluminum with an electrostatically applied light gray polyester powder coat finish
- Hardware – stainless steel
- Gasket – one-piece silicone
- Lens – tempered glass
- Lamp holder – porcelain

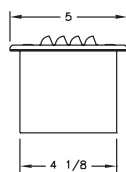
Technical specifications:

- Entries – standard units undrilled; up to 1" NPT four-way available
- Lamp type – A-19 40W incandescent (lamp not provided)
- Lamp holder – medium base
- Voltage – rated to 250V

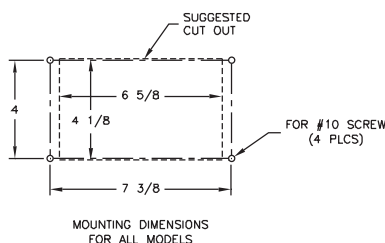
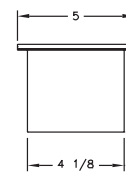
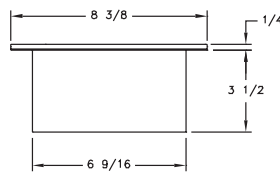
Dimensions (in inches):



814



816



Mounting option:

- Recessed wall mount

Photometrics:

- Complete photometrics can be found at www.crouse-hinds.com/photometrics

Ordering information:

| Cat. # | Description | No. of lamps | Weight (lbs.) |
|--------|----------------------------|--------------|---------------|
| 814AS | Clear lens, surface louver | 2 | 3.8 |
| 816AS | Frosted lens, no louver | 2 | 3.6 |

Accessories (ordered separately):

| Cat. # | Description |
|---------|--------------------|
| INX4088 | Lamp holder |
| INX2114 | Lens, 814, clear |
| INX2002 | Lens, 816, frosted |
| INX3531 | Lamp, 40W A-19 |
| GKT5024 | Gasket, lens frame |
| GKT5089 | Gasket, mounting |