

# Pauluhn MagnaPro hazardous area linear fluorescent luminaires

Cl. I, Div. 2, Groups A, B, C, D  
Cl. I, Zone 2, Groups IIA, IIB, IIC  
Cl. II, Div. 2, Groups F, G  
Cl. III  
Type 3R

5L

## Applications:

- Oil and gas exploration and production
- Wastewater treatment plants
- Pipeline compressor/pumping and storage
- Maintenance and lubrication pits
- Petrochemical facilities
- High abuse areas

## Features:

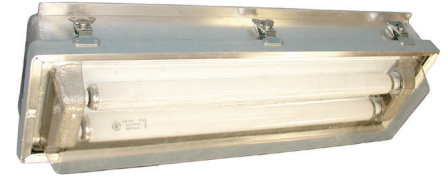
- Fluorescent system provides energy savings up to 50% when compared to HID
- Multi-voltage electronic ballast resistant to brownouts or voltage and frequency fluctuations
- Heavy duty lens and housing
- Full length flange on base allows for direct mounting
- Optional slide-in mounting bracket for ease of removal
- Tool-less entry via heavy duty twist draw latches
- Lens frame hinged on side for easy lamp replacement
- UV- and impact-resistant polycarbonate lens
- Extruded aluminum lens frame, seam welded
- Neoprene gasket resists petroleum
- Spring loaded lamp holders resist shock and vibration
- Optional self-contained emergency battery back-up ballasts
- Optional certified test switch on emergency models

## Certifications and compliances:

- Class I, Division 2, Groups A, B, C, D
- Class I, Zone 2, Groups IIA, IIB, IIC
- Class II, Division 2, Groups F, G
- Class III
- UL844 – Hazardous Locations
- UL1598 – Luminaires
- CSA – Class 3428 03
- CSA – Class 3428 83
- Type 3R

## Standard materials and finishes:

- Housing – extruded aluminum with cast end caps
- Lens – clear polycarbonate
- Reflector – galvanized steel with a white gloss finish
- Gasket – one-piece neoprene
- Latches – plated steel



## Technical specifications:

- Entries – 1/2" NPT through feed outlets (standard); 3/4" NPT outlets (optional)
- Lamp holder – spring loaded on one or both ends, depending on lamp type
- Latches – twist draw
- Ballast – 120-277V, 50/60 Hz electronic (standard); 347V and 480V (optional)
- Emergency battery back-up ballast – optional, self-contained 90 minute minimum for all lamp types; starting temperature 32°F (0°C)

## Mounting options:

- Direct via full length flange (standard); slide style kit (optional)

## Photometrics:

- Complete photometrics can be found at [www.crouse-hinds.com/photometrics](http://www.crouse-hinds.com/photometrics)

## Temperature performance data:

Watts	Ballast / socket type	ANSI lamp code	Class I	Class II; Class III	Starting temperature	Maximum ambient °C	Supply wire °C
14/28	T5 mini bi-pin G5	F14/F28-T5	T4A	T3C	0°F (-18°C)	55	90
24/54	T5HO mini bi-pin G5	F24/F54-T5HO	T4A	T3C	-20°F (-29°C)	55	90
35/60	T12HO RDC R17d	F24/F48-T12HO	T4	T3C	-20°F (-29°C)	55	90
44	T8HO RDC R17d	F48-T8HO	T4	T3C	-20°F (-29°C)	55	90

<sup>A</sup>Contact factory for optional higher ambient models.

# Pauluhn MagnaPro hazardous area linear fluorescent luminaires

Cl. I, Div. 2, Groups A, B, C, D  
Cl. I, Zone 2, Groups IIA, IIB, IIC  
Cl. II, Div. 2, Groups F, G  
Cl. III  
Type 3R

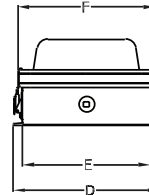
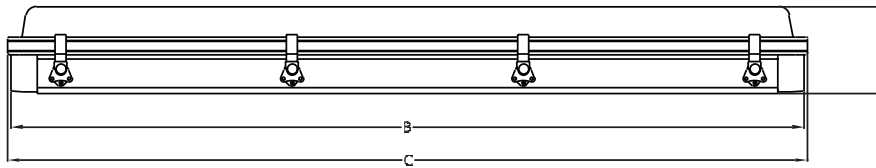
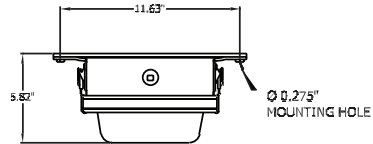
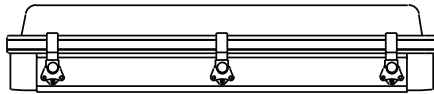
5L

## Ordering information:

Part number example  
MP42870\*\*

<b>MP</b>	<b>4</b>	<b>2</b>	<b>8</b>	<b>7</b>	<b>0</b>	<b>**</b>
<b>Model</b>						
MP						
<b>Length (nominal)</b>						
2	2 foot					
4	4 foot					
<b>Number of lamps</b>						
2	2 lamps					
3	3 lamps					
4	4 lamps (lamp types 5 and 6 only)					
<b>Lamp type</b>						
5	2 ft. F24 or 4 ft. F54 (T5HO mini bi-pin)					
6	2 ft. F14 or 4 ft. F28 (T5 mini bi-pin)					
7	4 ft. F48 (T8HO RDC)					
8	2 ft. F24 or 4 ft. F48 (T12HO RDC)					
<b>Mounting style<sup>B</sup></b>						
1	Direct flange mount: 1/2" NPT through feed					
3	Direct flange mount: 3/4" NPT through feed					
<b>Options</b>						
EM1 <sup>C</sup>	Emergency battery back-up ballast, one lamp, 277V max.					
EMT1 <sup>C</sup>	Emergency battery back-up ballast, one lamp, 277V max., test switch					
L <sup>D</sup>	Lamps					
S	Switch, on/off					

## Dimensions:



Nominal length	Dimensions in inches / centimeters						Carton W x D x L (in.)	Nominal weight Lbs. (kg.)
	A	B	C	D	E	F		
2 foot	5.60 (15.30)	27.40 (69.60)	28.00 (71.10)	9.50 (24.20)	8.00 (20.30)	8.50 (21.26)	10 1/2 x 6 1/2 x 33	19.00 (8.60)
4 foot	5.60 (15.30)	51.40 (130.60)	52.00 (132.10)	9.50 (24.20)	8.00 (20.30)	8.50 (21.26)	10 1/2 x 6 1/2 x 57 1/2	29.00 (13.20)

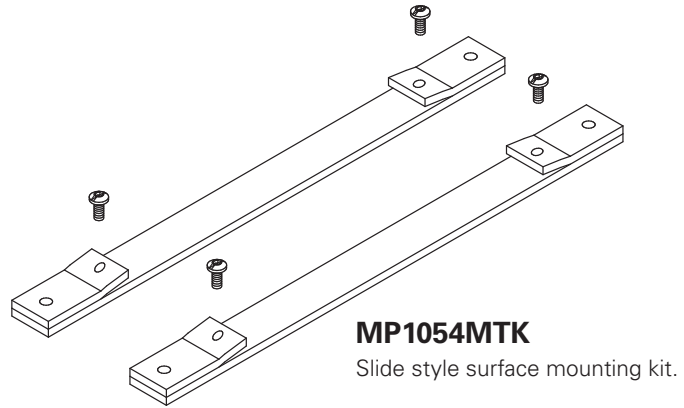
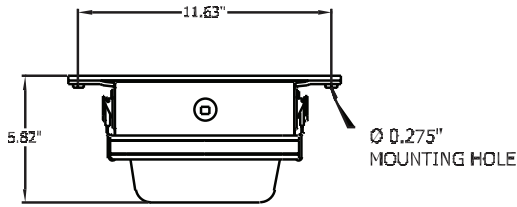
<sup>B</sup> See Mounting Options section for slide style kit.  
<sup>C</sup> EM1 or EMT1 not available in a 2 foot, 3- or 4-lamp.  
<sup>D</sup> Lamps are not included unless option 'L' is specified.

# Pauluhn MagnaPro hazardous area linear fluorescent luminaires

Cl. I, Div. 2, Groups A, B, C, D  
Cl. I, Zone 2, Groups IIA, IIB, IIC  
Cl. II, Div. 2, Groups F, G  
Cl. III  
Type 3R

5L

## Mounting options:



5L