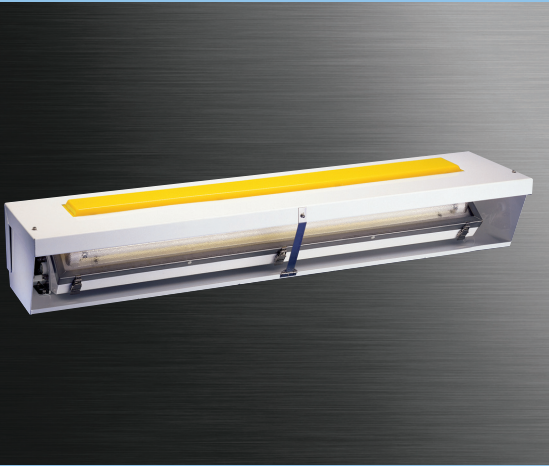


## HazHelideck FWN/al



### FEATURES

- Dual purpose heli-pad illumination and perimeter marking.
- Multi voltage electronic ballast resistant to brownouts or voltage and frequency fluctuations.
- Available in yellow and blue lens options.
- Shoc Loc™ Bi-Pin spring loaded lamp holders for T5, T8 and T12 lamp types, provide superior resistance to shock and vibration.
- Lens frame hinged on side for easy lamp replacement.
- Field replaceable stainless steel lens frame and latches.
- Neoprene gasket resists petroleum.
- Optional self contained emergency battery backup ballasts.
- Optional long life T5 lamps available upon request (consult factory).

### APPLICATIONS

- Heli-pad illumination and perimeter marking
- Hazardous locations
- Marine and watertight requirements
- Dusttight requirements
- Oil and gas exploration and production

### APPROVALS

- Class I Division 2 Groups A, B, C and D
- Class I Zone 2 Groups IIA, IIB, IIB+ H2 and IIC
- Class II Division I Groups E, F and G
- Class III
- Type 4X
- IP66
- Marine Outside Type Saltwater
- ABS

### STANDARDS

- UL 844 - Hazardous Locations
- UL 924 - Emergency Lighting Equipment
- UL 1598A - Luminaires for Marine Vessels
- CSA - Class 3428 03
- CSA - Class 3428 83

### TECHNICAL SPECIFICATIONS

#### OUTER SHELL

.062 inch thick. Type 5052H32 aluminum with an electrostatically applied white polyester powder coat finish.

#### OUTER DIFFUSER

Polycarbonate, yellow or blue.

#### INTERIOR LUMINAIRE HOUSING

.062 inch thick. Type 5052H32 aluminum with an electrostatically applied polyester powder coat finish.

#### INTERIOR LUMINAIRE LENS

0.125 inch thick DR acrylic drop lens.

#### REFLECTOR

Type 5052H32 aluminum with an electrostatically applied white polyester powder coat finish. Minimum 90% reflectance.

#### HARDWARE

Stainless steel.

#### GASKET

One piece neoprene.

#### MOUNTING

Surface type. See DIMENSIONS for details.

#### LATCHES

Stainless steel positive-locking spring loaded.

#### LENS FRAME

Type 304 stainless steel, hinged on side.

#### LAMP HOLDERS

Spring loaded on one end for linear lamp types.

#### ENTRIES

3/4" NPT feed-through outlets, one plugged.

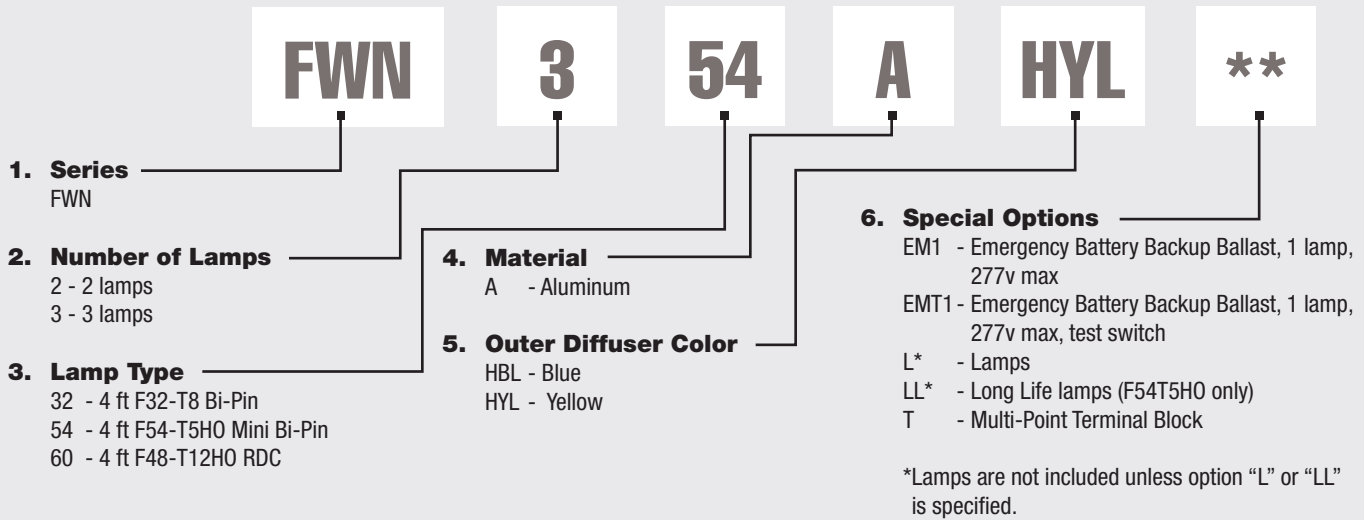
#### BALLAST

120 to 277 volt 50/60Hz electronic, optional 347v and 480v.

#### EMERGENCY BATTERY BACKUP BALLAST

Optional, self contained 90 minute minimum for all lamp types. 120 minute minimum for F32T8 one lamp. Starting temperature 32°F/0°C.

## ORDERING REFERENCES



### Notes:

1. Consult factory for options not listed.

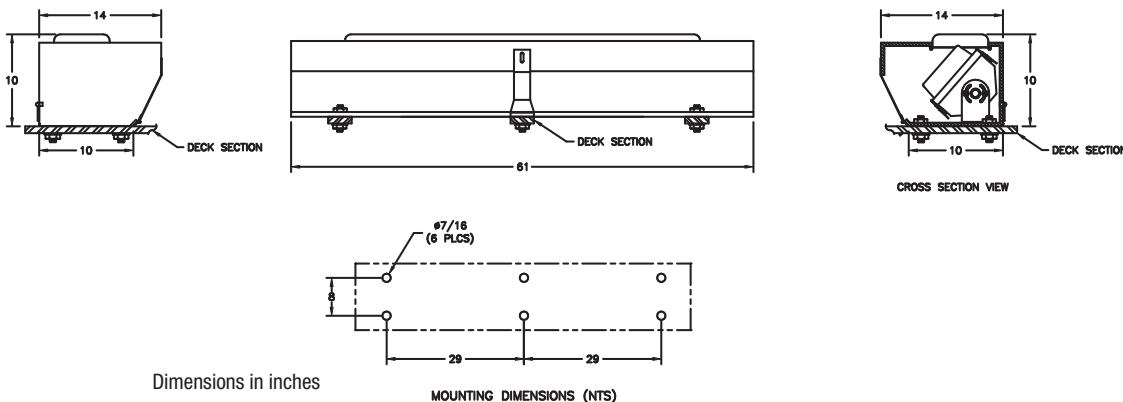
## SPARE PARTS

Part No.	Description
FX5221	BALLAST, 120-277V AC 50/60HZ, F32T8, 1 x 32
FX5340	BALLAST, 120-277V AC 50/60HZ, F32T8, 2 x 32
FX5305	BALLAST, 120-277V AC 50/60HZ, F54T5HO, 1 x 54
FX5305	BALLAST, 120-277V AC 50/60HZ, F54T5HO, 2 x 54
FX5334	BALLAST, 120-277V AC 50/60HZ, F48T12HO, 1 x 60
FX5334	BALLAST, 120-277V AC 50/60HZ, F48T12HO, 2 x 60
FX3527	LAMP, 32w, F32T8
FX3567	LAMP, 54w, F54T5HO
FX3577	LAMP, 54w, Long Life F54T5HO
FX3505	LAMP, 60w, F48T12HO
GKT6088-117.5	INTERIOR LENS GASKET
FX4008	LAMP HOLDER, Stationary, 32w & 54w
FX4009	LAMP HOLDER, Spring, 32w & 54w
FX4004	LAMP HOLDER, Stationary, 60w
FX4005	LAMP HOLDER, Spring, 60w
FX7027A	INTERIOR MOUNTING BRACKET
FX2024XYEL	OUTER DIFFUSER, Yellow Lens
FX2024XBLU	OUTER DIFFUSER, Blue Lens

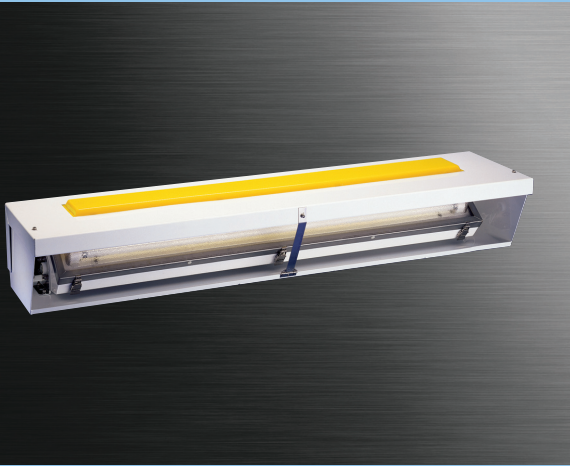
## TEMPERATURE CODES & APPROVALS

Lamp Wattage	Ballast/Socket Type	ANSI Lamp Code	Class I T-Code	Class I Division 2	Class II Division 1	Class III	Class II & III T-Code	Starting Temp	Maximum Ambient	Supply Wire
32	T8 Bi-Pin G13	F32-T8	T5/T4A	A,B,C & D	E, F & G	Yes	T3C	-20°F / -29°C	40°/55°C	90°C
54	T5HO Mini Bi-Pin G5	F54-T5HO	T3C	A,B,C & D	E, F & G	Yes	T3C	-20°F / -29°C	40°C	90°C
60	T12HO RDC R17d	F48-T12HO	T3C	A,B,C & D	E, F & G	Yes	T3C	-20°F / -29°C	40°C	90°C

## DIMENSIONS



## HazHelideck FWN/ss



### FEATURES

- Dual purpose heli-pad illumination and perimeter marking.
- Multi voltage electronic ballast resistant to brownouts or voltage and frequency fluctuations.
- Stainless steel housing, lens frame, mounting brackets and latches.
- Available in yellow and blue lens options.
- Shoc Loc™ Bi-Pin spring loaded lamp holders for T5, T8 and T12 lamp types, provide superior resistance to shock and vibration.
- Lens frame hinged on side for easy lamp replacement.
- Field replaceable stainless steel lens frame and latches.
- Neoprene gasket resists petroleum.
- Optional self contained emergency battery backup ballasts.
- Optional long life T5 lamps available upon request (consult factory).

### APPLICATIONS

- Heli-pad illumination and perimeter marking.
- Hazardous locations
- Marine and watertight requirements
- Dusttight requirements
- Oil and gas exploration and production

### APPROVALS

- Class I Division 2 Groups A, B, C and D
- Class I Zone 2 Groups IIA, IIB, IIB+ H2 and IIC
- Class II Division I Groups E, F and G
- Class III
- Type 4X
- IP66
- Marine Outside Type Saltwater
- ABS

### STANDARDS

- UL 844 - Hazardous Locations
- UL 924 - Emergency Lighting Equipment
- UL 1598A - Luminaires for Marine Vessels
- CSA - Class 3428 03
- CSA - Class 3428 83

### TECHNICAL SPECIFICATIONS

#### OUTER SHELL

.062 inch thick type 304 stainless steel. Optional type 316.

#### OUTER DIFFUSER

Polycarbonate, yellow or blue.

#### INTERIOR LUMINAIRE HOUSING

.062 inch thick type 304 stainless steel. Optional type 316.

#### INTERIOR LUMINAIRE LENS

0.125 inch thick DR acrylic drop lens

#### REFLECTOR

Type 5052H32 aluminum with an electrostatically applied white polyester powder coat finish. Minimum 90% reflectance.

#### HARDWARE

Stainless steel.

#### GASKET

One piece neoprene.

#### MOUNTING

Surface type. See DIMENSIONS for details.

#### LATCHES

Stainless steel positive-locking spring loaded.

#### LENS FRAME

Type 304 stainless steel, hinged on side. Optional type 316.

#### LAMP HOLDERS

Spring loaded on one end for linear lamp types.

#### ENTRIES

3/4" NPT feed-through outlets, one plugged.

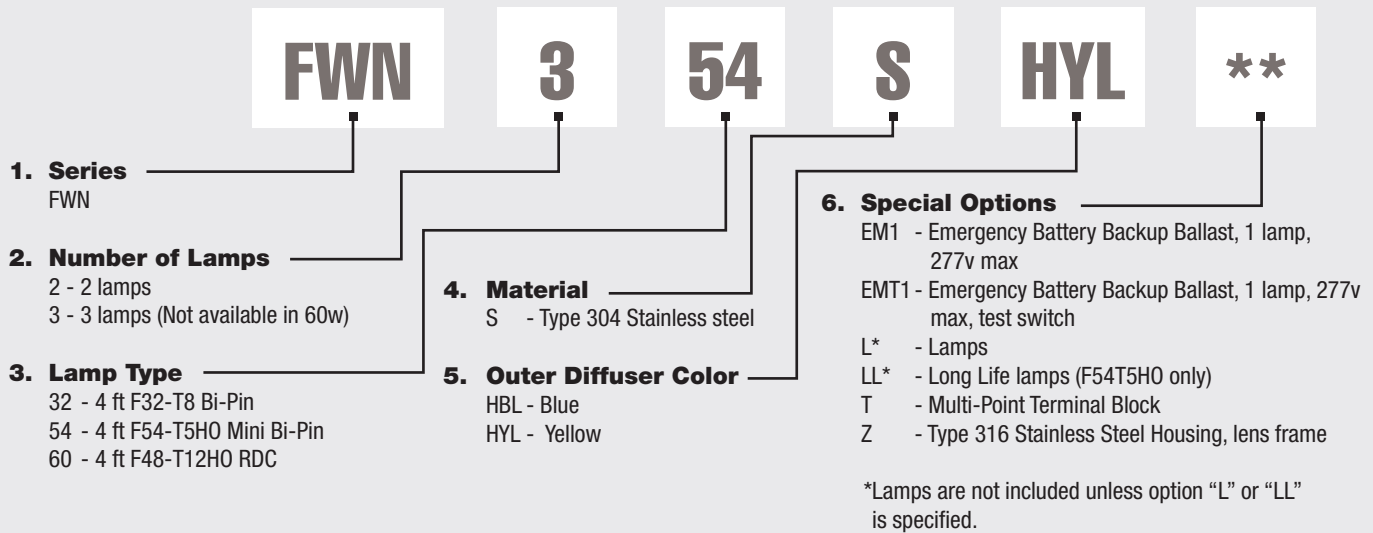
#### BALLAST

120 to 277 volt 50/60Hz electronic, optional 347v and 480v.

#### EMERGENCY BATTERY BACKUP BALLAST

Optional, self contained 90 minute minimum for all lamp types. 120 minute minimum for F32T8 one lamp. Starting temperature 32°F/0°C.

## ORDERING REFERENCES



- Notes:  
1. Consult factory for options not listed.

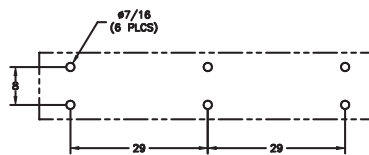
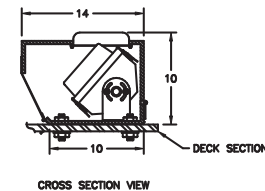
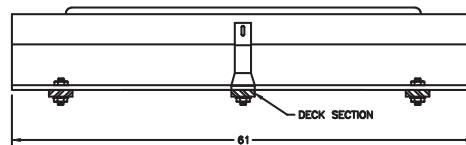
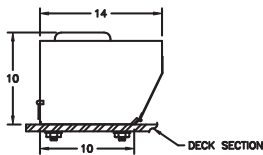
## SPARE PARTS

Part No.	Description	Part No.	Description
FX5221	BALLAST, 120-277V AC 50/60HZ, F32T8, 1 x 32	GKT6088-117.5	INTERIOR LENS GASKET
FX5340	BALLAST, 120-277V AC 50/60HZ, F32T8, 2 x 32	FX4008	LAMP HOLDER, Stationary, 32w & 54w
FX5305	BALLAST, 120-277V AC 50/60HZ, F54T5HO, 1 x 54	FX4009	LAMP HOLDER, Spring, 32w & 54w
FX5305	BALLAST, 120-277V AC 50/60HZ, F54T5HO, 2 X 54	FX4004	LAMP HOLDER, Stationary, 60w
FX5334	BALLAST, 120-277V AC 50/60HZ, F48T12HO, 1 x 60	FX4005	LAMP HOLDER, Spring, 60w
FX5334	BALLAST, 120-277V AC 50/60HZ, F48T12HO, 2 x 60	FX7027S	INTERIOR MOUNTING BRACKET
FX3527	LAMP, 32w, F32T8	FX2024XYEL	OUTER DIFFUSER, Yellow Lens
FX3567	LAMP, 54w, F54T5HO	FX2024XBLU	OUTER DIFFUSER, Blue Lens
FX3577	LAMP, 54w, Long Life F54T5HO		
FX3505	LAMP, 60w, F48T12HO		

## TEMPERATURE CODES & APPROVALS

Lamp Wattage	Ballast/Socket Type	ANSI Lamp Code	Class I T-Code	Class I Division 2	Class II Division 1	Class III	Class II & III T-Code	Starting Temp	Maximum Ambient	Supply Wire
32	T8 Bi-Pin G13	F32-T8	T5/T4A	A,B,C & D	E, F & G	Yes	T3C	-20°F / -29°C	40°/55°C	90°C
54	T5HO Mini Bi-Pin G5	F54-T5HO	T3C	A,B,C & D	E, F & G	Yes	T3C	-20°F / -29°C	40°C	90°C
60	T12HO RDC R17d	F48-T12HO	T3C	A,B,C & D	E, F & G	Yes	T3C	-20°F / -29°C	40°C	90°C

## DIMENSIONS



Dimensions in inches

MOUNTING DIMENSIONS (NTS)