

FVS long twin tube fluorescent luminaires

Cl. I, Div. 2, Groups B, C, D
Cl. II, Div. 1, Groups E, F, G
Cl. II, Div. 2, Groups F, G
Cl. III & Simultaneous Presence

Marine & Wet Locations
3, 3R, 4, 4X; IP66

5L

Applications:

FVS long twin tube fluorescent luminaires are used:

- Where low mounting heights or limited mounting room exists
- For task oriented lighting
- Where a cool, efficient light source is required
- In areas that require lamps to reach full illumination immediately
- In industrial and chemical processing
- In pulp and paper facilities
- In waste or sewage treatment facilities
- In non-hazardous commercial and industrial areas
- In food and pharmaceutical plants where a non-glass lens is required
- Where fluorescent lighting has been preferred, but unavailable due to limited space and practicality

Features:

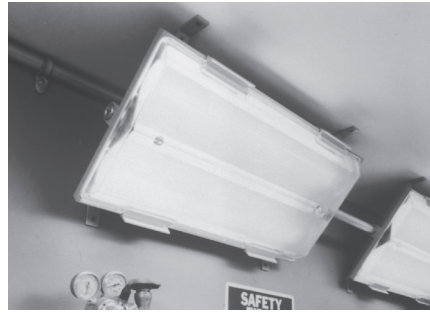
- Compact, lightweight, low profile design is ideal for confined areas and tight corners
- Reaches full illumination immediately and delivers light output equivalent to fixtures twice its size
- Fast-Latch™ closure provides quick and easy access for relamping and maintenance – no tools necessary
- Silicone sealing gasket provides exceptional watertight and dusttight bond, providing excellent performance in wet and corrosive environments
- Power disconnect switch (Eaton's Crouse-Hinds series ESWP) automatically cuts power to the lamps and ballast when the lens is opened
- Shatter-resistant polymeric lens (0.125 thick) provides environmental and corrosion protection
- Available in UNV (120-277) and 347, 50/60 Hz voltages
- Two-lamp fixture, uses single-ended 40 watt lamps
- Multiple mounting capability
- Energy saving electronic ballast is standard

Size ranges:

- All luminaires are 24.00" L x 12.00" W x 3.12" H
- Conduit entrances are 3/4"

Electrical ratings:

- 120-277 VAC, 50-60 Hz
- 347V, 60 Hz
- Two 40W long twin tube lamps



Certifications and compliances:

NEC/CEC:

- Class I, Division 2, Groups B, C, D
- Class II, Division 1, Groups E, F, G (suffix S813)
- Class II, Division 2, Groups F, G
- Class III & Simultaneous Presence (Class I and Class II)

Note: Aiming limitations

- Class II, Class III & Simultaneous Presence
- Aim down to horizontal
- Cannot aim up

UL standards:

- UL844 – Hazardous (Classified) Locations
- UL1598 – Luminaires
- UL1598A – Marine Locations

CSA standard:

- C22.2 No. 137

Standard materials:

- Housing – corrosion-resistant die cast copper-free aluminum
- Lens – shatter-resistant nylon; polycarbonate (optional, suffix S813)
- Gasket – silicone rubber
- Hinges and closure hardware – extruded aluminum with stainless steel pivots

Standard finishes:

- Housing – epoxy powder coat
- Hinges and closure hardware – anodized
- Reflector – highly specular aluminum

Photometrics:

- Complete photometrics can be found at www.crouse-hinds.com/photometrics

Temperature performance data:

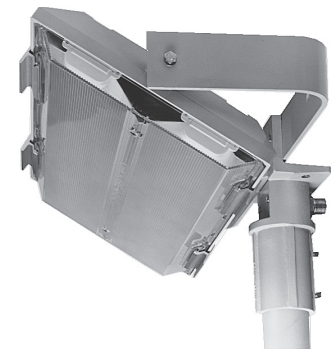
Style	Ambient temp. °C	Class I, Div. 2	Class II		Supply wire °C	Minimum operating temp.
			See aiming limitations	Simultaneous presence		
All	40	T3C	T6	T3C / T6	75	-18°C (0°F)
All	55	T3C	–	–	75	-18°C (0°F)

Options:

- | Description | Suffix |
|---|------------------------|
| • Fused – to protect ballast under abnormal line conditions..... | S658 |
| <i>Not available on CSA certified fixtures
Not suitable for marine applications</i> | |
| • Fixture supplied with two F40BX/SPX35 lamps..... | S714 |
| • Corro-free epoxy finish, internal and external..... | S753 |
| • Tamperproof | Contact factory |

Accessories (ordered separately):

- | Description | Cat. # |
|---|---------------|
| • Trunnion mount kit | FVS-K5 |
| <i>Permits vertical mounting of luminaire on a beam when used with a standard beam clamp
Can be mounted directly to a wall or ceiling
Can be pole mounted when used in conjunction with a SFA6 slipfitter adapter (ordered separately)
Constructed from copper-free aluminum
Supplied with a CGB cord connector</i> | |
| • Slipfitter adapter to be used with trunnion arm..... | SFA6 |



FVS with trunnion arm and slipfitter

Weight:

Type	Luminaire without lamps (lbs.)
Standard 2-lamp FVS	12.00

FVS long twin tube fluorescent luminaires

Cl. I, Div. 2, Groups B, C, D
 Cl. II, Div. 1, Groups E, F, G
 Cl. II, Div. 2, Groups F, G
 Cl. III & Simultaneous Presence

Marine & Wet Locations
 3, 3R, 4, 4X; IP66

5L

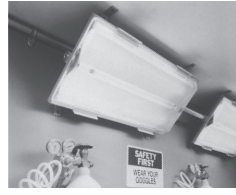
Luminaire includes all necessary provisions for these installations:



Ceiling mount



Pendant mount



Corner mount



Horizontal wall mount



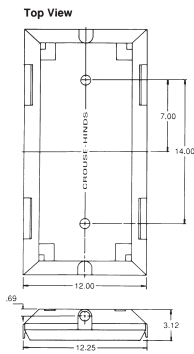
Vertical wall mount

Ordering information:

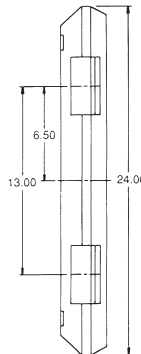
Voltage	Lamp watts	Hub size (4)	Cat. #	Cat. # With Class II, Division 1 suitability
120-277 (50 or 60 Hz)	40	3/4"	FVS20/UNV	FVS20/UNV S813
347 (50 or 60 Hz)	40	3/4"	FVS23	FVS23 S813

Dimensions:

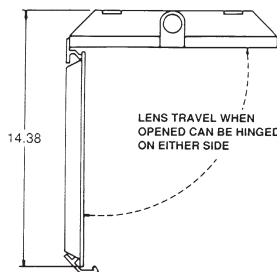
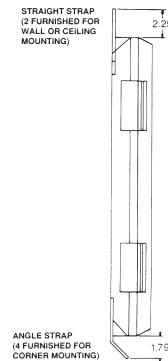
FVS with trunnion arm: 26.25" L x 13.50" W x 3.12" H



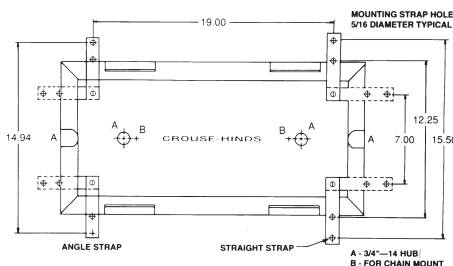
Top view



Side view



FVS with lens open



FVS showing mounting strap positioning