

# eLLB20 recessed mount fluorescent luminaires

Cl. I, Div. 2, Groups A, B, C, D  
Cl. I, Zone 1, Group IIC  
Cl. II, Div. 2, Groups F, G  
Cl. II, Div. 1, Groups E, F, G (Canada)

ATEX Certified  
Wet Locations  
Enclosure Type 4X, IP66

5L

## Applications:

eLLB fluorescent luminaires are used:

- For flush or surface ceiling mounting
- In clean room areas where it is important to have smooth, flush surfaces
- Where extreme cleanliness is required as in pharmaceutical, chemical and electronics manufacturing facilities, as well as in paint shops and spray booths
- For tough environmental conditions involving corrosives, water, dust and extreme temperatures
- In areas that require lamps to reach full illumination immediately
- Indoor and outdoor ordinary or hazardous areas
- For wet locations and areas with hose down/wash down requirements

## Features:

- One-piece welded housing with fitted cover frame; the cover frame is an integral part of the housing to seal out dust and moisture
- Adjustable mounting clamps:  
Permanently attached and adjustable through the cover frame for easy installation  
Allow recess mounting in ceilings from 25mm to 100mm (1" to 4" approximately) thick for maximum mounting flexibility
- Support lugs (M8 x 0.6) to secure the luminaire to ceiling structural support members for safety
- Frameless tempered glass lens:  
6mm (1/4") thick for added safety  
Interior hinge for maximum dust shedding  
Fitted with captive screws for ease of lamp replacement and maintenance
- Isolating switch turns off power to the ballast and lamps when the lens is opened for added safety
- Four entries (two on each end) supplied with (2) 3/4" NPT adapter hubs and extra large wire well for through feed and tandem applications without the need for separate junction boxes
- Electronic ballast:  
High power factor (95%) for energy efficiency, more luminaires per circuit and supply voltage flexibility  
Features two channel circuitry for safety – if one lamp fails, the second lamp remains in operation
- Uses T8 linear fluorescent lamps for high efficiency and reduced operating costs
- 5-wire terminal block and through wiring are standard for quick and easy balancing of lighting loads on 3-phase systems

## Certifications and compliances:

### NEC:

- Class I, Division 2, Groups A, B, C, D
- Class I, Zone 1, AEx ed IIC
- Class II, Division 2, Groups F, G
- UL Listed

### CEC:

- Class I, Division 2, Groups A, B, C, D
- Class I, Zone 1, Ex eds IIC
- Class II, Division 1, Groups E, F, G
- cUL Listed

### Enclosure:

- Type 4X
- IP66

### UL standards:

- UL844 – Hazardous (Classified) Locations
- UL1598 – Luminaires

### CSA standards:

- C22.2 No. 9
- CAN/CSA-E60079-0:02
- CAN/CSA-E60079-1:02
- CAN/CSA-E60079-7
- CAN/CSA-E61241-1-1:02

### ATEX:

#### ATEX Directive 94/9/EC:

- Ex II 2 G
- Ex II 2 D T80°C

#### Type of protection:

- Ex ed IIC T4
- Ex ed ib IIC T4 (CG-variant)

#### EC-Type examination certificate:

- DMT 02 ATEX E 069

## Standard materials:

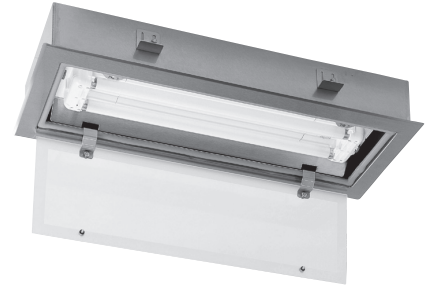
- One-piece welded housing and cover frame – sheet steel or stainless steel
- Lens – 6mm (1/4") thick tempered glass
- Gaskets – silicone
- External hardware – stainless steel

## Standard finishes:

- Sheet steel – white epoxy coat
- Lens – clear
- Stainless steel – natural

## Photometrics:

- Complete photometrics can be found at [www.crouse-hinds.com/photometrics](http://www.crouse-hinds.com/photometrics)



Adjustable mounting clamps



Hinged glass lens

# eLLB20 recessed mount fluorescent luminaires

Cl. I, Div. 2, Groups A, B, C, D  
 Cl. I, Zone 1, Group IIC  
 Cl. II, Div. 2, Groups F, G  
 Cl. II, Div. 1, Groups E, F, G (Canada)

ATEX Certified  
 Wet Locations  
 Enclosure Type 4X, IP66

5L

## Electrical ratings:

### Sources/wattages:

- Two 17W or 32W T8 linear fluorescents

### Voltages:

- 120-240V, 50-60 Hz
- 110-230 VDC

### Hub sizes:

- Four 25mm entries, two on each end, three plugged
- Two 3/4" NPT adapter hubs provided standard, for through feed or tandem wiring

### Terminals:

- 5-wire terminal block, one on each end (L1, L2, L3, N, Ground)
- Two 6mm<sup>2</sup> (#10 AWG) maximum per terminal

## Accessories (ordered separately):

### Description

- 3/4" NPT adapter hub ..... **STM 2**

### Mounting accessories:

- Eye bolt for support lugs .. **2 2480 002 000**
- Hexagon screw for support lugs ..... **2 2480 054 000**

## Temperature performance data:

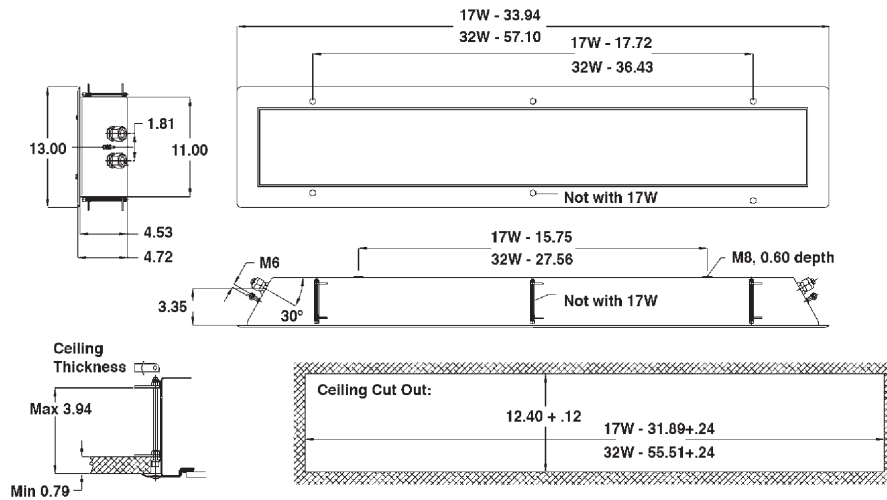
Watts	Ambient temp. °C	Minimum starting temp. °C	Class I, Div. 2; Class I, Zones 1 & 2	Class II	Supply wire °C
Two 17W T8 lamps	50	-20	T4	T6	60
Two 32W T8 lamps	50	-20	T4	T6	60

## Ordering information:

Hub size	Watts / lamp type	Voltage / frequency	Operating current	Cat. # Epoxy coated steel enclosure	Cat. # Stainless steel enclosure
3/4"	Two 17W T8 rapid start	120-240V, 50-60 Hz; 110-230 VDC	0.18A	ELLB202217/U240	ELLB202217SS/U240
3/4"	Two 32W T8 rapid start	120-240V, 50-60 Hz; 110-230 VDC	0.34A	ELLB204232/U240	ELLB204232SS/U240

IEC/CENELEC certified luminaires are available. Consult factory for more information.

## Dimensions (in inches):



## Weights:

Type	Weight (lbs.)
eLLB20 2217	33.00
eLLB20 4232	48.00