

Champ DMV HID luminaires

50-250W

For combustible dust applications

Cl. I, Div. 2, Groups A, B, C, D
Restricted Breathing Cl. I, Div. 2
& Zone 2 (with suffix S826)
Certified for IEC Zone 2
(with suffix S826TB)

Cl. II, Groups E, F, G
Cl. III & Simultaneous
Presence (175W max.)
Marine & Wet Locations
3, 3R, 4, 4X; IP66

3L

Applications:

Champ® DMV HID luminaires are used:

- In applications made hazardous by the presence of combustible dusts
- In areas in which ignitable concentrations of flammable gases or vapors will be present only due to abnormal, unusual or accidental conditions
- In marine applications where water spray and corrosive atmospheres are considerations
- In areas where combustible dusts and flammable vapors are present simultaneously
- In elevated ambient temperatures often found in industrial applications
- In installations where moisture, dirt, dust, vibration, corrosion and rough usage are problems
- Wherever the damaging effects of wind, snow, sleet or hot sun are found
- In grain handling, storage and processing plants, coal preparation plants, coal conveying areas, food processing plants, manufacturing plants, refineries, chemical, petrochemical and other industrial process facilities, waste or sewage treatment facilities, offshore, dockside and harbor installations, and other heavy industrial applications

Features:

- Cast copper-free aluminum construction (less than 0.4 of 1% copper) and epoxy powder finish provide excellent resistance to corrosion
- Hinged ballast housing for ease of installation and maintenance
- All luminaires designed to perform in a 40°C ambient temperature; selected luminaires are suitable for ambient temperatures up to 65°C
- Superior gasketing seals between the mounting module, housing and optical assembly for optimum performance in wet and corrosive environments
- Hubs with an integral conduit stop and bushing to help prevent damage to field wiring during installation
- Low ambient capability to (-40°C)
- Dome and 30° angle reflectors made of bright white Krydon material provide superior reflectivity, with twist-on feature requiring no tools or additional hardware; will not chip, peel, dent, rust or corrode
- Mogul base porcelain lamp socket
- Stainless steel open bottom guard permits direct access to the globe for easy relamping
- Grounding wire for safety
- Ballasts available in voltages of 120, 208, 240, 277, 347, 480, 600 and multi-tap^A



Certifications and compliances:

NEC/CEC:

- Class I, Division 2, Groups A, B, C, D
- Class I, Zone 2
- 175W max. – Class II, Class III & Simultaneous Presence (Class I, Division 2 and Class II)

IEC:

- Zone 2, Ex nR IIC

UL standards:

- UL844 – Hazardous (Classified) Locations
- UL1598 – Luminaires
- UL1598A – Marine Locations

CSA standard:

- C22.2 No. 137

IEC standard:

- 60079-15

Standard materials:

- Ballast housings and mountings – copper-free aluminum (less than 0.4 of 1% copper)
- Guard and exterior hardware – stainless steel
- Reflectors (dome and angle) – Krydon fiberglass-reinforced polyester
- Globes – heat- and impact-resistant internally fluted glass

Standard finishes:

- Copper-free aluminum – epoxy powder coat
- Krydon – high reflectance white
- Stainless steel – natural

Electrical ratings:

- 120, multi-tap^A (120, 208, 240, 277), tri-tap (120, 277, 347), 480, 600 volts
- 50-150W HPS; 70-250W MH

Options:

Description

Suffix

- Restricted breathing construction **S826**
*Class I, Division 2 & Zone 2 suitability
Cooler operating temperatures (T-codes)*
 - Restricted breathing/non-sparking..... **S865**
*Class I, Division 2 & Zone 2
Provides T3 code without conduit or cable seals*
 - Certified for IEC Zone 2..... **S826TB**
*Furnished with terminal block, crimp terminals
and dedicated voltage ballasts (no MT, DT or TT)*
 - Fused – to protect ballast and capacitors
against abnormal line conditions **S658^A**
*Not available with MT ballast
Not for use in Canada
Not suitable for marine applications*
 - Quick-Clip – holds weight of housing when
closed; no need to support luminaire while
screwing the housing to the cover.... **S890**
 - Ballast-Gard starter cut-out switch –
prevents starter pulsing when lamp is
cycling or inoperative; prolongs ballast and
ignitor life..... **BG**
Available for use with 50-150W LX HPS only
 - Instant restrike – enables a hot HPS lamp
to immediately restrike after a momentary
loss arc due to voltage fluctuation or
power outage; has no effect on the
warm-up period of cold lamps..... **IR**
50-150W LX HPS only
 - During a “failed lamp” condition, this
feature discontinues the start-up operation
after 1 minute..... **TIR**
50-150W LX HPS only
 - Quartz auxiliary lighting – comes to full
brightness immediately and remains lit
until the HID lamp attains 60-70% of full
illumination..... **QTZ**
*For non-hazardous locations only
QTZ lamp not included; use 100W single-ended
lamp – Q100DC, Q100CL/DC or 100Q/CL/DC
Consult factory for top hat limitations*
 - Stainless steel insert – top hat with
stainless steel threaded insert to attach
ballast housing..... **S806**
 - Teflon coated globe for additional
protection against breakage **S808**
*For use with 50-150W HPS and 70-175W MH
(G303 only)*
 - Factory assembled with HID lamps
installed for additional labor savings..... **FA**
- Note:** BG and IR options cannot be used together. IR and QTZ options cannot be used together. S865 and S826 options cannot be used together.
- Note:** Some T-codes (operating temperatures) change. See Temperature Performance Data section.

Accessories:

- See pages 216-217 for complete listing

Photometrics:

- Complete photometrics can be found at www.crouse-hinds.com/photometrics

^AWhen ordering fuses for luminaires, you must specify the operating voltage. S658 cannot be ordered with /MT, /DT or /TT in the catalog number.

Champ DMV HID Luminaires

50-150W high pressure sodium
For combustible dust applications

Cl. I, Div. 2, Groups A, B, C, D
Restricted Breathing Cl. I, Div. 2
& Zone 2 (with suffix S826)
Certified for IEC Zone 2
(with suffix S826TB)

Cl. II, Groups E, F, G
Cl. III & Simultaneous
Presence
Marine & Wet Locations
3, 3R, 4, 4X; IP66

3L

To complete the catalog number, include information in Notes 1, 2 and 3 below. For guards and other optics, see DMV – ordering by components page.

BASIC CATALOG NUMBER



Mounting style	Hub size	Lamp watts	Cat. #	
			With G303 globe and P33 guard	With GR305 glass refractor [Ⓟ]
Pendant mount	3/4"	50	DMVS2A050GP	DMVS2A050GR305
	1"		DMVS3A050GP	DMVS3A050GR305
	3/4"	70	DMVS2A070GP	DMVS2A070GR305
	1"		DMVS3A070GP	DMVS3A070GR305
	3/4"	100	DMVS2A100GP	DMVS2A100GR305
	1"		DMVS3A100GP	DMVS3A100GR305
3/4"	150	DMVS2A150GP	DMVS2A150GR305	
1"		DMVS3A150GP	DMVS3A150GR305	
Flexible pendant mount	3/4"	50	DMVS2HA050GP	DMVS2HA050GR305
	3/4"	70	DMVS2HA070GP	DMVS2HA070GR305
	3/4"	100	DMVS2HA100GP	DMVS2HA100GR305
	3/4"	150	DMVS2HA150GP	DMVS2HA150GR305
Ceiling mount through feed	3/4"	50	DMVS2C050GP	DMVS2C050GR305
	1"		DMVS3C050GP	DMVS3C050GR305
	3/4"	70	DMVS2C070GP	DMVS2C070GR305
	1"		DMVS3C070GP	DMVS3C070GR305
	3/4"	100	DMVS2C100GP	DMVS2C100GR305
	1"		DMVS3C100GP	DMVS3C100GR305
3/4"	150	DMVS2C150GP	DMVS2C150GR305	
1"		DMVS3C150GP	DMVS3C150GR305	
Wall mount through feed	3/4"	50	DMVS2TW050GP	DMVS2TW050GR305
	1"		DMVS3TW050GP	DMVS3TW050GR305
	3/4"	70	DMVS2TW070GP	DMVS2TW070GR305
	1"		DMVS3TW070GP	DMVS3TW070GR305
	3/4"	100	DMVS2TW100GP	DMVS2TW100GR305
	1"		DMVS3TW100GP	DMVS3TW100GR305
3/4"	150	DMVS2TW150GP	DMVS2TW150GR305	
1"		DMVS3TW150GP	DMVS3TW150GR305	
Quad mount Pendant, adjustable through feed, 25° angle, 12 1/2° angle	3/4"	50	DMVS25Q050GP	DMVS25Q050GR305
	3/4"	70	DMVS25Q070GP	DMVS25Q070GR305
	3/4"	100	DMVS25Q100GP	DMVS25Q100GR305
	3/4"	150	DMVS25Q150GP	DMVS25Q150GR305
Stanchion mount 25° angle	1 1/2"	50	DMVSJ050GP	DMVSJ050GR305
	1 1/2"	70	DMVSJ070GP	DMVSJ070GR305
	1 1/2"	100	DMVSJ100GP	DMVSJ100GR305
	1 1/2"	150	DMVSJ150GP	DMVSJ150GR305
Stanchion mount Straight	1 1/2"	50	DMVSP050GP	DMVSP050GR305
	1 1/2"	70	DMVSP070GP	DMVSP070GR305
	1 1/2"	100	DMVSP100GP	DMVSP100GR305
	1 1/2"	150	DMVSP150GP	DMVSP150GR305

[Ⓟ] For GR302 Type II refractor, change 'GR305' at end of catalog number to 'GR302.' Example: DMVS2A050GR302.
For GR303 Type III refractor, change 'GR305' at end of catalog number to 'GR303.' Example: DMVS2A050GR303.

1. Add voltage suffix to end of catalog number.

Standard voltage ballasts – 60 Hz

Optional voltage ballasts – 50 or 60 Hz

NEC/UL				CEC/CSA (cUL)			CEC/CSA (cUL) – CWI isolated ballasts				Export					
Voltage Suffix	Multi-tap /MT	Dual-tap /DT	120V /120	480V /480	Tri-tap /TT	Dual-tap /DT	120V /120	Voltage Suffix	208V CWI /208 CWI	240V CWI /240 CWI	480V CWI /480 CWI	600V CWI /600 CWI	220V 60 Hz /220	220V 50 Hz /220 50	230V 50 Hz /230 50	240V 50 Hz /240 50

2. 150W HPS luminaires:

- 55V lamps standard – use suffix LX; for 100V lamps – use suffix CE
- 50W HPS luminaire is dual-tap only

3. Options: Add the required option suffixes (see page 187) in alphanumeric order.

Champ DMV HID luminaires

150-250W pulse start metal halide
For combustible dust applications

Cl. I, Div. 2, Groups A, B, C, D
Restricted Breathing Cl. I, Div. 2
& Zone 2 (with suffix S826)
Certified for IEC Zone 2
(with suffix S826TB)

Cl. II, Groups E, F, G
Cl. III & Simultaneous
Presence (175W max.)
Marine & Wet Locations
3, 3R, 4, 4X; IP66

3L

To complete the catalog number, include information in Notes 1 and 2 below. For guards and other optics, see DMV – ordering by components page.

BASIC CATALOG NUMBER

Mounting style	Hub size	Lamp watts	Cat. #	
			With G303 globe and P33 guard	With GR305 glass refractor [Ⓢ]
Pendant mount	3/4"	150	DMVM2A150GP S828	DMVM2A150GR305 S828
	1"		DMVM3A150GP S828	DMVM3A150GR305 S828
	3/4"	175	DMVM2A175GP S828	DMVM2A175GR305 S828
	1"		DMVM3A175GP S828	DMVM3A175GR305 S828
	3/4"	200	DMVM2A200GP S828	DMVM2A200GR305 S828
	1"		DMVM3A200GP S828	DMVM3A200GR305 S828
3/4"	250	DMVM2A250GP S828	DMVM2A250GR305 S828	
1"		DMVM3A250GP S828	DMVM3A250GR305 S828	
Flexible pendant mount	3/4"	150	DMVM2HA150GP S828	DMVM2HA150GR305 S828
	3/4"	175	DMVM2HA175GP S828	DMVM2HA175GR305 S828
	3/4"	200	DMVM2HA200GP S828	DMVM2HA200GR305 S828
	3/4"	250	DMVM2HA250GP S828	DMVM2HA250GR305 S828
Ceiling mount through feed	3/4"	150	DMVM2C150GP S828	DMVM2C150GR305 S828
	1"		DMVM3C150GP S828	DMVM3C150GR305 S828
	3/4"	175	DMVM2C175GP S828	DMVM2C175GR305 S828
	1"		DMVM3C175GP S828	DMVM3C175GR305 S828
	3/4"	200	DMVM2C200GP S828	DMVM2C200GR305 S828
	1"		DMVM3C200GP S828	DMVM3C200GR305 S828
	3/4"	250	DMVM2C250GP S828	DMVM2C250GR305 S828
	1"		DMVM3C250GP S828	DMVM3C250GR305 S828
Wall mount through feed	3/4"	150	DMVM2TW150GP S828	DMVM2TW150GR305 S828
	1"		DMVM3TW150GP S828	DMVM3TW150GR305 S828
	3/4"	175	DMVM2TW175GP S828	DMVM2TW175GR305 S828
	1"		DMVM3TW175GP S828	DMVM3TW175GR305 S828
	3/4"	200	DMVM2TW200GP S828	DMVM2TW200GR305 S828
	1"		DMVM3TW200GP S828	DMVM3TW200GR305 S828
	3/4"	250	DMVM2TW250GP S828	DMVM2TW250GR305 S828
	1"		DMVM3TW250GP S828	DMVM3TW250GR305 S828
Quad mount Pendant, adjustable through feed, 25° angle, 12 1/2° angle	3/4"	150	DMVM25Q150GP S828	DMVM25Q150GR305 S828
	3/4"	175	DMVM25Q175GP S828	DMVM25Q175GR305 S828
	3/4"	200	DMVM25Q200GP S828	DMVM25Q200GR305 S828
	3/4"	250	DMVM25Q250GP S828	DMVM25Q250GR305 S828



Ⓢ For GR302 Type II refractor, change 'GR305' at end of catalog number to 'GR302.' Example: DMVM2A150GR302 S828.
For GR303 Type III refractor, change 'GR305' at end of catalog number to 'GR303.' Example: DMVM2A150GR303 S828.

1. Add voltage suffix to end of catalog number.

Standard voltage ballasts – 60 Hz

NEC/UL			CEC/CSA (cUL)	
Voltage	Multi-tap	120V	480V	Tri-tap
Suffix	/MT	/120	/480	/TT

Optional voltage ballasts – 50 or 60 Hz

Export			
Voltage	220V 60 Hz	220V 50 Hz	230V 50 Hz
Suffix	/220	/220 50	/230 50
			240V 50 Hz
			/240 50

2. Options: Add the required option suffixes (see page 187) in alphanumeric order.

Champ DMV HID Luminaires

70-250W metal halide

For combustible dust applications

Cl. I, Div. 2, Groups A, B, C, D
Restricted Breathing Cl. I, Div. 2
& Zone 2 (with suffix S826)
Certified for IEC Zone 2
(with suffix S826TB)

Cl. II, Groups E, F, G
Cl. III & Simultaneous
Presence (175W max.)
Marine & Wet Locations
3, 3R, 4, 4X; IP66

3L

To complete the catalog number, include information in Notes 1, 2 and 3 below. For guards and other optics, see DMV – ordering by components page.

BASIC CATALOG NUMBER



Mounting style	Hub size	Lamp watts	BASIC CATALOG NUMBER	
			Cat. # With G303 globe and P33 guard	Cat. # With GR305 glass refractor [Ⓧ]
Pendant mount	3/4"	70	DMVM2A070GP	DMVM2A070GR305
	1"		DMVM3A070GP	DMVM3A070GR305
	3/4"	100	DMVM2A100GP	DMVM2A100GR305
	1"		DMVM3A100GP	DMVM3A100GR305
	3/4"	175 [Ⓧ]	DMVM2A175GP	DMVM2A175GR305
	1"		DMVM3A175GP	DMVM3A175GR305
3/4"	250 [Ⓧ]	DMVM2A250GP	DMVM2A250GR305	
1"		DMVM3A250GP	DMVM3A250GR305	
Flexible pendant mount	3/4"	70	DMVM2HA070GP	DMVM2HA070GR305
	3/4"	100	DMVM2HA100GP	DMVM2HA100GR305
	3/4"	175 [Ⓧ]	DMVM2HA175GP	DMVM2HA175GR305
	3/4"	250 [Ⓧ]	DMVM2HA250GP	DMVM2HA250GR305
Ceiling mount through feed	3/4"	70	DMVM2C070GP	DMVM2C070GR305
	1"		DMVM3C070GP	DMVM3C070GR305
	3/4"	100	DMVM2C100GP	DMVM2C100GR305
	1"		DMVM3C100GP	DMVM3C100GR305
	3/4"	175 [Ⓧ]	DMVM2C175GP	DMVM2C175GR305
	1"		DMVM3C175GP	DMVM3C175GR305
3/4"	250 [Ⓧ]	DMVM2C250GP	DMVM2C250GR305	
1"		DMVM3C250GP	DMVM3C250GR305	
Wall mount through feed	3/4"	70	DMVM2TW070GP	DMVM2TW070GR305
	1"		DMVM3TW070GP	DMVM3TW070GR305
	3/4"	100	DMVM2TW100GP	DMVM2TW100GR305
	1"		DMVM3TW100GP	DMVM3TW100GR305
	3/4"	175 [Ⓧ]	DMVM2TW175GP	DMVM2TW175GR305
	1"		DMVM3TW175GP	DMVM3TW175GR305
3/4"	250 [Ⓧ]	DMVM2TW250GP	DMVM2TW250GR305	
1"		DMVM3TW250GP	DMVM3TW250GR305	
Quad mount Pendant, adjustable through feed, 25° angle, 12 1/2° angle	3/4"	70	DMVM25Q070GP	DMVM25Q070GR305
	3/4"	100	DMVM25Q100GP	DMVM25Q100GR305
	3/4"	175 [Ⓧ]	DMVM25Q175GP	DMVM25Q175GR305
	3/4"	250 [Ⓧ]	DMVM25Q250GP	DMVM25Q250GR305
Stanchion mount 25° angle	1 1/2"	70	DMVMJ070GP	DMVMJ070GR305
	1 1/2"	100	DMVMJ100GP	DMVMJ100GR305
	1 1/2"	175 [Ⓧ]	DMVMJ175GP	DMVMJ175GR305
	1 1/2"	250 [Ⓧ]	DMVMJ250GP	DMVMJ250GR305
Stanchion mount Straight	1 1/2"	70	DMVMP070GP	DMVMP070GR305
	1 1/2"	100	DMVMP100GP	DMVMP100GR305
	1 1/2"	175 [Ⓧ]	DMVMP175GP	DMVMP175GR305
	1 1/2"	250 [Ⓧ]	DMVMP250GP	DMVMP250GR305

[Ⓧ] For GR302 Type II refractor, change 'GR305' at end of catalog number to 'GR302.' Example: DMVM2A070GR302.
For GR303 Type III refractor, change 'GR305' at end of catalog number to 'GR303.' Example: DMVM2A070GR303.

[Ⓧ] 175W and 250W not available in USA.

1. Add voltage suffix to end of catalog number.

Standard voltage ballasts – 60 Hz

	NEC/UL		CEC/CSA (cUL)	
Voltage	Multi-tap	120V	480V	Tri-tap
Suffix	/MT	/120	/480	/TT

Optional voltage ballasts – 50 or 60 Hz

	CEC/CSA (cUL) – CWI isolated ballasts – 175W and 250W MH only			Export			
Voltage	208V CWI	240V CWI	600V CWI	220V 60 Hz	220V 50 Hz	230V 50 Hz	240V 50 Hz
Suffix	/208 CWI	/240 CWI	/600 CWI	/220	/220 50	/230 50	/240 50

2. 70W ballast not available in 480V.

3. Options: Add the required option suffixes (see page 187) in alphanumeric order.

Champ DMV HID luminaires

Ordering by components

Cl. I, Div. 2, Groups A, B, C, D
Restricted Breathing Cl. I, Div. 2
& Zone 2 (with suffix S826)
Certified for IEC Zone 2
(with suffix S826TB)

Cl. II, Groups E, F, G
Cl. III & Simultaneous
Presence (175W max.)
Marine & Wet Locations
3, 3R, 4, 4X; IP66

3L

DMV luminaires are available in components.

A complete luminaire consists of:

- I. Champ cover (mounting module)
- II. DMV ballast housing – include voltage and required option(s)
- III. Globe, guard, reflector, refractor

I. Champ cover (mounting module):

Type	Conduit size	Cat. #
Pendant mount	3/4"	APM2
	1"	APM3
Flexible pendant mount	3/4"	HPM2
Ceiling mount [Ⓣ]	3/4"	CM2
	1"	CM3
Wall mount	3/4"	TWM2
	1"	TWM3
Stanchion mount – 25° angle	1 1/2"	JM5
Stanchion mount – straight	1 1/2"	PM5
Quad mount	3/4"	QM25

II. Ballast housings:

Complete catalog number must have the **voltage suffix** (MT shown) and any **options suffixes**.

Lamp type	Lamp watts	Cat. #
High pressure sodium	50	DMVS050/MT
	70	DMVS070/MT
	100	DMVS100/MT
	150	DMVS150/MT LX
Metal halide	70	DMVM070/MT
	100	DMVM100/MT
	175	DMVM175/MT
	250	DMVM250/MT

III. Globes, guards, reflectors, refractors:

Type	Cat. #
Globe	G303
Globe – Teflon coated	G303-S808
Globe guard	P33
Reflector – dome	RD739
Reflector – angle	RA739
Refractor – Type II	GR302
Refractor – Type III	GR303
Refractor – Type V	GR305
Large plastic refractor – Type II	PGR302 [Ⓣ]
Large plastic refractor – Type III	PGR303 [Ⓣ]
Large plastic refractor – Type V	PGR305 [Ⓣ]
Refractor guard	P23
High bay reflector/lens	GRD4

[Ⓣ]Not available with V2PC photocell.

[Ⓣ]For non-hazardous applications only (50-100W max.).

Champ DMV HID luminaires

Cl. I, Div. 2, Groups A, B, C, D
Restricted Breathing Cl. I, Div. 2
& Zone 2 (with suffix S826)
Certified for IEC Zone 2
(with suffix S826TB)

Cl. II, Groups E, F, G
Cl. III & Simultaneous
Presence (175W max.)
Marine & Wet Locations
3, 3R, 4, 4X; IP66

3L

Family tree:

COVERS:

PENDANT

APM2 3/4 IN.
APM3 1 IN.
HPM2 3/4 IN.

WALL

TWM2 3/4 IN.
TWM3 1 IN.

QUAD-MOUNT

QM25 3/4 IN.

CEILING

CM2 3/4 IN.
CM3 1 IN.

STANCHION

JM5 1 1/2 IN. PM5 1 1/2 IN.

HOUSING

DMV

GLOBE

G303
G303 S808

REFLECTOR/LENS

GRD4

REFRACTOR

GR302
GR303
GR305
PGR302 Ⓜ
PGR303 Ⓜ
PGR305 Ⓜ

GUARD

P23

GUARD

P33

REFLECTOR

RA739

RD739



Ⓜ Plastic refractors are for non-hazardous areas only (50-100W max.).

Champ DMV HID luminaires

Cl. I, Div. 2, Groups A, B, C, D
Restricted Breathing Cl. I, Div. 2
& Zone 2 (with suffix S826)
Certified for IEC Zone 2
(with suffix S826TB)

Cl. II, Groups E, F, G
Cl. III & Simultaneous
Presence (175W max.)
Marine & Wet Locations
3, 3R, 4, 4X; IP66

Temperature performance data:

Cat. #	Watts	Lamp Type	Rated ambient °C	Class I, Div. 2		Class II, Div. 1		Simult. pres. Class I, Div. 2; Class II, Div. 1 (with G303 globe only)	Class I, Zone 2			Supply wire suitable for °C
				Globe (G303) with or without reflector (RA739, RD739) ❶	Reflector (GR302, GR303, GR305)	Reflector (GR302, GR303, GR305) or globe (G303) ❷	Globe (G303) with reflector (RA739, RD739)		Restricted breathing suffix S826 with globe (G303)	Globe (G303) with reflector (RA739, RD739)	Factory sealed suffix S865 AEx nA nR II	
DMVS50	50	HPS	40	T3A	T3A	T6	T6	T3A	T6	T6	T3	90
DMVS50	50	HPS	55	T3	T3	T5	T5	T3	T5	T5	T3	90
DMVS50	50	HPS	65	T3	T3	T4A	T4A	T3	T5	T5	T3	90
DMVS70	70	HPS	40	T3A	T3A	T6	T6	T3A	T6	T6	T3	90
DMVS70	70	HPS	55	T3	T3	T5	T5	T3	T5	T5	T3	90
DMVS70	70	HPS	65	T3	T3	T4A	T4A	T3	T5	T5	T3	90
DMVS100	100	HPS	40	T2D	T2D	T5	T5	T3D	T6	T6	T3	90
DMVS100	100	HPS	55	T2C	T2C	T4A	T4A	T2C	T5	T5	T3	90
DMVS100	100	HPS	65	T2C	T2C	—	—	—	T4	T4	T3	90
DMVS150	150	HPS	40	T2B	T2B	T3C	T3C	T2A	T5	T5	T3	90
DMVS150	150	HPS	55	T2B	T2B	—	—	—	T4	T4	T3	90
DMVS150	150	HPS	65	T2A	T2B	—	—	—	—	—	T3	90
DMVM70	70	MH	40	T3C ❶	T3C	T3C	—	—	T6	T6	T3	90
DMVM70	70	MH	55	T3B ❶	T3C	—	—	—	T5	T5	T3	90
DMVM70	70	MH	65	T3A ❶	T3A	—	—	—	T5	T5	T3	90
DMVM100	100	MH	40	T3 ❶	T3A	T3C	—	—	T5	T5	T3	90
DMVM100	100	MH	55	T3 ❶	T3A	—	—	—	T5	T5	T3	90
DMVM100	100	MH	65	T2D ❶	T2D	—	—	—	T4	T4	T3	90
DMVM150	150	MH PS	40	T2B	—	T4A	T4A	—	T4	T4	T3	105
DMVM150	150	MH PS	55	T2A	—	T4	T4	—	T4	T4	T3	105
DMVM150	150	MH PS	65	T2A	—	T4	T4	—	T4	T4	T3	105
DMVM175	175	MH	40	T2B ❶	T2	T3C	T3C	T2A	T4	T4	T3	90
DMVM175	175	MH	55	T2A ❶	T2	—	—	—	T4	T4	T3	90
DMVM175	175	MH	65	T2A ❶	T2	—	—	—	T3	T3	T3	90
DMVM175	175	MH PS	40	T2B ❶	—	T4A	T4A	—	T4	T4	T3	105
DMVM175	175	MH PS	55	T2A ❶	—	T4	T4	—	T4	T4	T3	105
DMVM175	175	MH PS	65	T2A ❶	—	T4	T4	—	T4	T4	T3	105
DMVM200	200	MH	40	T2	—	—	—	—	T4	T4	T3	90
DMVM200	200	MH	55	T1 (325)	—	—	—	—	T3	T3	T3	90
DMVM250	250	MH	40	T2	—	—	—	—	T4	T4	T3	90
DMVM250	250	MH	55	T1 (325)	—	—	—	—	T3	T3	T3	90
DMVF52	2/26 (52)	CF	40	T3	—	T6	—	—	T6	T6	T3	90
DMVF64	2/32 (64)	CF	40	T3	—	T6	T6	—	T6	T6	T3	90
DMVF84	2/42 (84)	CF	40	T3A	—	T4A	T4A	—	T4	T4	—	90

The Class I, Division 2 T-codes apply to luminaires without the restricted breathing (S826) or factory sealed (S865) options. These luminaires are listed to UL844. UL844 specifies how the temperatures are measured.

The Class I, Zone 2 T-codes are for luminaires that are additionally listed to UL60079-15 that specify a different method for measuring temperatures. Since NEC 501.1 states that equipment "...for use in Class I, Zone 0, 1, or 2 locations shall be permitted in Class I, Division 2 locations..." then these luminaires are suitable for Class I, Division 2 but with cooler temperature ratings. They also have the advantage of meeting the more rigorous mechanical tests of UL844.

❶ All DMVM 175W and below MH luminaires provided with catalog number G303-S808 have a T2A T-code.

❷ For use with reflector only when this table indicates by means of a T-code that the reflector is suitable for use with Class I, Division 2 luminaires.

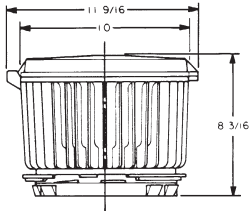
Champ DMV HID luminaires

Cl. I, Div. 2, Groups A, B, C, D
Restricted Breathing Cl. I, Div. 2
& Zone 2 (with suffix S826)
Certified for IEC Zone 2
(with suffix S826TB)

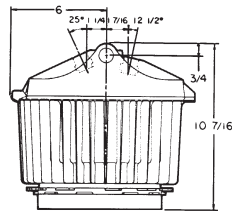
Cl. II, Groups E, F, G
Cl. III & Simultaneous
Presence (175W max.)
Marine & Wet Locations
3, 3R, 4, 4X; IP66

3L

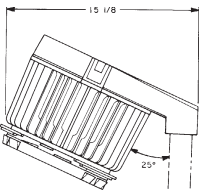
Dimensions (in inches):



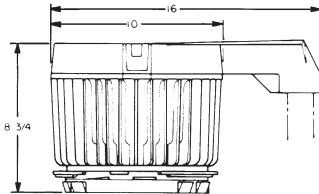
Pendant mount



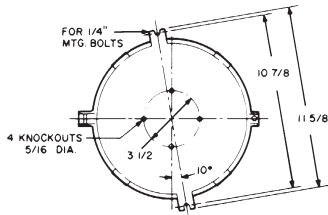
Quad mount



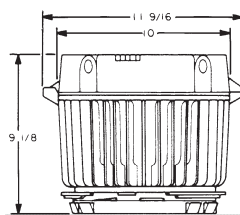
Stanchion mount 25° angle



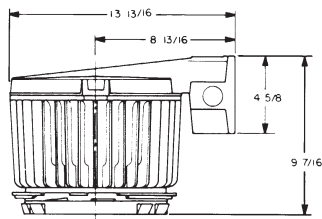
Stanchion mount straight



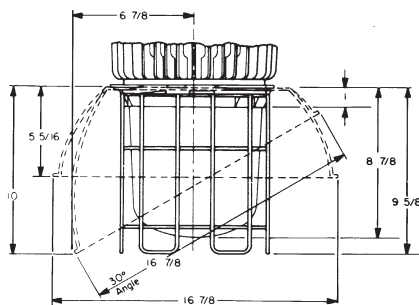
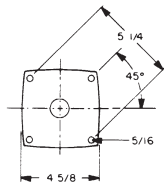
Top view



Ceiling mount



Wall mount



Luminaire with globe, guard, reflectors

Net luminaire weights:

Luminaire series	Lamp watts	Luminaire with globe, guard (lbs.)
DMVS	50	23.00
	70	23.06
	100	24.06
	150	26.13
DMVM	70	21.00
	100	21.06
	175	22.25
	250	24.00

Type	Weight (lbs.)	Type	Weight (lbs.)
Add mounting modules:			
Pendant	1.25	Quad	3.50
Flexible pendant	1.50	Stanchion 25° angle	3.50
Ceiling	2.75	Stanchion straight	4.50
Wall	4.50		
Add reflectors:			
Dome	1.25	30° angle	1.75

Deduct: 1.00 lb. for fixture without P33 guard

Add: 5.50 lbs. for fixture with GR305 refractor

3L