

# 4.3

## Ex-Pendant light fittings AB 50 / SPG 1N

(Zone 1, 2, 21, 22)

**The pendant light fitting series for a wide variety of applications**

### AB 50 and SPG 1N

Due to their compact design, the lights series AB 50 and SPG 1N can be used especially for individual lighting

The robust light alloy enclosure allows a wide range of applications. The protective glass dome is made of borosilicate glass and is extremely impact and heat resistant.

Thanks to their robust design, these light fittings are suitable for use in the chemical industry and are certified for ambient temperatures from -55 °C to +55 °C. The AB 50 and SPG 1N are suitable and certified for an LED lamp.



### Features

- Different housing solutions for various applications
- Robust design for harsh environments
- With large Ex-d or Ex-e terminal compartment
- Wide ambient temperature range depending on the version from -50 °C up to +55 °C
- CU-Certificate for Eurasian Economic Community available
- High degree of protection IP 66
- Meets the highest corrosion protection and mechanical strength requirements

### Ordering details

Type	Lamp / Illuminant	Weight	Metal thread	Threaded plug	Dust cap	Order No.
<b>AB 50 ... (IU = direct entry, IXM = indirect entry)</b>						
AB 50 IU	up to 20W LED	1.6 kg	2 x 3/4" NPT	1 x 3/4" Ex-d	x	<b>NOR 000 115 110 289</b>
AB 50 IXM	up to 20W LED	2.2 kg	2 x M25	1 x M25 Ex-e	x	<b>NOR 000 115 110 320</b>
AB 50 IU, -50 °C up to +55 °C	up to 20W LED	1.6 kg	2 x 3/4" NPT	1 x 3/4" Ex-d	x	<b>NOR 000 115 110 389</b>
AB 50 IXM, -50 °C up to +55 °C	up to 20W LED	2.2 kg	2 x M25	1 x M25 Ex-e	x	<b>NOR 000 115 110 420</b>
SPG 1N	up to 20W LED	2.2 kg	2 x M25	1 x M25 Ex-e	x	<b>NOR 000 005 110 745</b>



### Accessories

Type	Content	Application	OU	Order No.
ER	External reflector painted steel	AB 50	1	<b>NOR 000 115 110 718</b>
AS.EV/AB	Ceiling bracket AISI 316	AB 50	1	<b>NOR 000 005 110 828</b>
SPU.EV/AB	Wall mounting bracket, adjustable	AB 50	1	<b>NOR 000 005 110 951</b>
CEV/AB	Eye bolt	AB 50	1	<b>NOR 000 005 110 852</b>
WG	Wire guard, galvanized	AB 50	1	<b>NOR 000 115 110 875</b>

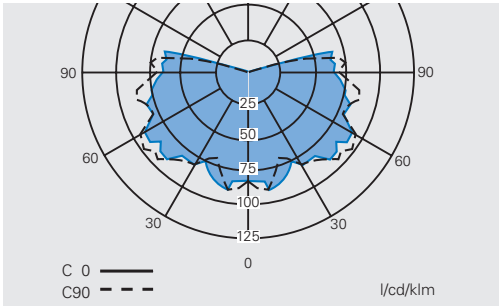
Scope of delivery without lamp and fixing accessories, if not stated otherwise.  
Metal cable glands see catalogue part 2: 2.3.12 ff

# 4.3

## Polar curve Pendant light fittings

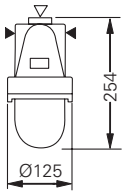
### Polar curve

#### Polar curve AB 50 IU

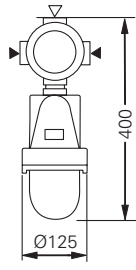


### Dimension drawing

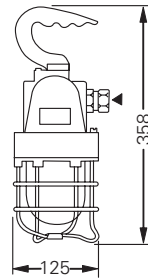
#### AB 50 IU



#### AB 50 IXM

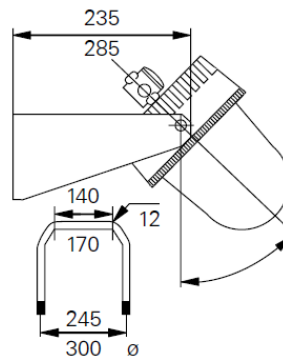
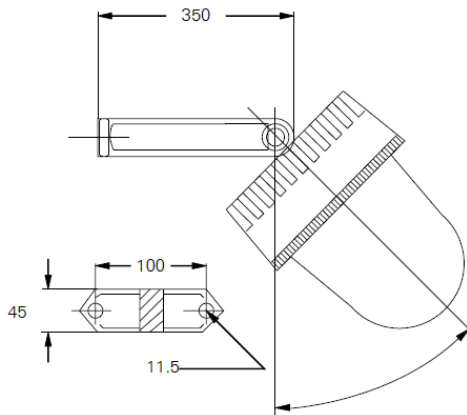


#### SPG 1N

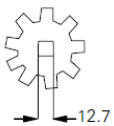


▶ entry  
▽ optional entry, on request

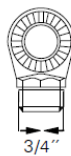
#### SPU EV/AB



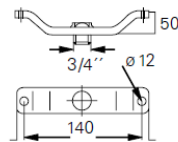
#### KEY.EV



#### CEV/AB



#### AS.EV/AB



Dimensions in mm



## Technical data

### AB 50 / SPG 1N

EC-Type Examination Certificate	LOM 02ATEX2018X/6
IECEX Certificate of Conformity	IECEX BK1 07.0032X
Marking accd. to 2014/34/EU	II 2 G Ex db IIC T4..T6 Gb II 2 G Ex db eb IIC T4..T6 Gb (indirect entry) II 2D Ex tb IIIC T85°C..T176°C Db
Marking accd. to IECEx	Ex d IIC T3...T6 or Ex de IIC T3...T6 (indirect entry) Ex tD A21 IP66 T145°...T85°C
Permissible ambient temperature	-20 °C up to +55 °C -50 °C up to +55 °C (option: AB 50)
Rated voltage	max. 250 V
Frequency	50 Hz
Power consumption	max. 100 VA
Protection class	I
Lamp / Illuminant	up to 20W LED
Rated luminous flux	<sup>1)</sup>
Lamp cap	E27 accord. IEC 60238, BA15D (LED)
Light output ratio	68 %
Connecting terminals	L, N, PE: 1 x 2.5 mm <sup>2</sup> or 2 x 1.5 mm <sup>2</sup> , PE ext. 2 x 6 mm <sup>2</sup>
Enclosure colour	epoxy paint, body RAL 7032
Enclosure material	light alloy
Weight	1.6 kg
Cable glands / gland plates / enclosure drilling	2 x 3/4" or M25 thread (Ex-d), 1 x plugged (UI and M/S) / 2 x M25 x 1.5, 1 x plugged (IX)
Type of mounting	ceiling-/wall mounting (AB 50), portable light fixture (SPG 1N)
Degree of protection accd. to EN 60529	IP66
Protective cover / protective bowl	borosilicate glass

<sup>1)</sup> see table luminaire data