

# 2.8

## Ex-Linear light fitting with metal housing

AB 12...LED

(Zone 1, 2, 21, 22)

### The robust lighting concept for hazardous areas

With its flameproof housing made of copper free aluminium (Cu < 0.1 %), high degree of protection IP66 / IP67 and a protective tube made of borosilicate glass with a high mechanical and thermal stability, this luminaire is the ideal solution for harsh and hazardous environments.

### The luminaire for all types of applications

The AB 12 LED luminaire series with G13 sockets permit the use of large variety of LED tubes available on the market. The AB12 LED series is available in 3 different sizes intended for their use with LED tubes with different connections, retrofit or both side supplied tubes. The easy-to-open threaded

cover, the large terminal compartment and the lamp assembly on a guide carriage facilitate servicing.

An optional external reflector ensures an application-specific light distribution. The optional protective wire guard made of stainless steel provides added safety.



### Features

- Robust Ex-d housing
- For use with standard T8 LED-tubes
- Easy opening due to screwed cover on end
- 2 individual circuits (double lamp version)
- Large terminal compartment with pluggable connector
- High degree of protection IP66 / IP67

## Ordering details



Type	Content	Terminals	Through-wiring single-ended	Cable gland/thread	Threaded plug	Order No.
<b>AB 12... LED for retrofit LED-tubes</b>						
AB 12220 LED 1EF 2N	3 x 2 x 2,5mm <sup>2</sup>	x	x	2 x 3/4" NPT, metal thread	1 x 3/4" Ex-d	<b>NOR 000 005 060 331E</b>
AB 12240 LED 1EF 2N	3 x 2 x 2,5mm <sup>2</sup>	x	x	2 x 3/4" NPT, metal thread	1 x 3/4" Ex-d	<b>NOR 000 005 060 332E</b>
AB 12265 LED 1EF 2N	3 x 2 x 2,5mm <sup>2</sup>	x	x	2 x 3/4" NPT, metal thread	1 x 3/4" Ex-d	<b>NOR 000 005 060 333E</b>
AB 12220 LED 1EF 2M	3 x 2 x 2,5mm <sup>2</sup>	x	x	2 x M25, metal thread	1 x M25 Ex-d	<b>NOR 000 005 060 431E</b>
AB 12240 LED 1EF 2M	3 x 2 x 2,5mm <sup>2</sup>	x	x	2 x M25, metal thread	1 x M25 Ex-d	<b>NOR 000 005 060 432E</b>
AB 12265 LED 1EF 2M	3 x 2 x 2,5mm <sup>2</sup>	x	x	2 x M25, metal thread	1 x M25 Ex-d	<b>NOR 000 005 060 433E</b>

Scope of delivery without lamp and fixing accessories  
Metal cable glands see catalogue part 2: 2.3.12 ff

## Ordering details / Accessories

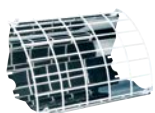
AB12

### Accessories

Type	Content	Application	Order No.
LED tube 9 W 600 mm	1100 lm / 840	AB 12220 LED 1EF	
LED tube 18 W 1200 mm	2300 lm / 840	AB 12240 LED 1EF	<b>NOR 000 000 506 521</b>
LED tube 27 W 1500 mm	3400 lm / 840	AB 12265 LED 1EF	<b>NOR 000 000 506 522</b>

### Accessories

Type	Content	Application	Order No.
Reflector RAB 220 A2	Reflector, AISI 304	for AB 12220 LED...	<b>NOR 003 045 060 403</b>
Reflector RAB 240 A2	Reflector, AISI 304	for AB 12240 LED...	<b>NOR 003 045 060 411</b>
Reflector RAB 265 A2	Reflector, AISI 304	for AB 12265 LED...	<b>NOR 003 045 060 429</b>
Reflector GRAB 220 A2	Reflector + wire guard ANSI 304	for AB 12220 LED...	<b>NOR 003 045 060 479</b>
Reflector GRAB 240 A2	Reflector + wire guard ANSI 304	for AB 12240 LED...	<b>NOR 003 045 060 487</b>
Reflector GRAB 265 A2	Reflector + wire guard ANSI 304	for AB 12265 LED...	<b>NOR 003 045 060 495</b>
Reflector RAB 220 A4	Reflector, AISI 316	for AB 12220 LED...	<b>NOR 003 165 060 403</b>
Reflector RAB 240 A4	Reflector, AISI 316	for AB 12240 LED...	<b>NOR 003 165 060 411</b>
Reflector RAB 265 A4	Reflector, AISI 316	for AB 12265 LED...	<b>NOR 003 165 060 429</b>
Reflector GRAB 220 A4	Reflector + wire guard ANSI 316	for AB 12220 LED...	<b>NOR 003 165 060 479</b>
Reflector GRAB 240 A4	Reflector + wire guard ANSI 316	for AB 12240 LED...	<b>NOR 003 165 060 487</b>
Reflector GRAB 265 A4	Reflector + wire guard ANSI 316	for AB 12265 LED...	<b>NOR 003 165 060 495</b>

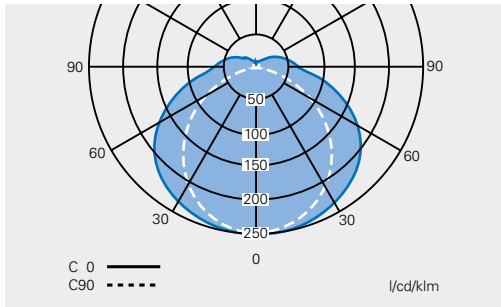


# 2.8

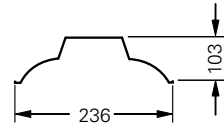
## Dimension drawing / Polar curve

AB 12...LED

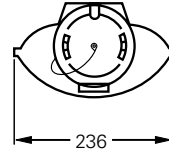
**Polar curve AB 12...LED**



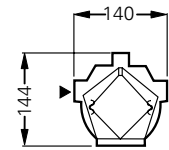
**AB 12...**



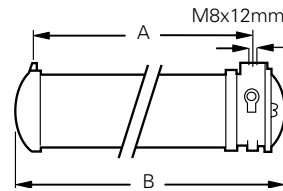
**Reflector RAB**



**Reflector with wire guard GRAB**

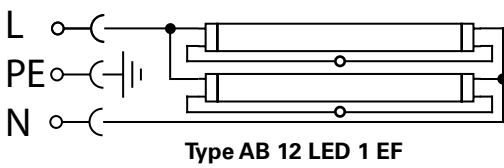


► entries



	<b>A</b>	<b>B</b>
<b>AB 12220 ...</b>	652	707
<b>AB 12240 ...</b>	1265	1320
<b>AB 12265 ...</b>	1565	1620

**Wiring diagram AB 12 ... LED 1 EF**



Dimensions in mm



2

## Technical data

### AB 12 LED 1EF

EC-Type Examination Certificate	LOM 02 ATEX 2013 X
Marking accd. to 2014/34/EU	II 2 G Ex d IIB T6 Gb II 2 D Ex t IIIC T85°C Db
Permissible ambient temperature	-20 °C up to +40 °C (T6)
Rated voltage	max. 277 V <sup>1)</sup>
Frequency	50 - 60 Hz <sup>1)</sup>
Power factor cos φ	≥ 0.9 <sup>1)</sup>
Circuit	direct
Protection class	I
Lamp / Illuminant	2 x T8 LED-tube up to 56 W, both ends supply voltage (Retrofit) <sup>1)</sup>
Lamp cap	G13 accd. to IEC 60061-1
Light output ratio	100 %
Connecting terminals	L, N and PE: 2 x 2, 5 mm <sup>2</sup> / PE ext. 2 x 6 mm <sup>2</sup>
Enclosure colour	grey RAL 7032 (body), RAL 7016 (cover)
Enclosure material	copper-free aluminium with powder coating
Cable glands / gland plates / enclosure drilling	direct entry: 2 x 3/4" NPT or 2 x M25 1 x Ex-d blanking plug 3/4" NPT or M25
Degree of protection accd. to EN 60529	IP 66/67
Protective cover / protective bowl	borosilicate glass

<sup>1)</sup> depends on the used LED-tubes