

Ex-Fluorescent emergency light fitting with metal housing

AB 12...Ni
(Zone 1, 2, 21, 22)

fluorescent emergency light fitting with metal housing

With its flameproof housing made of copper free aluminium (Cu < 0.1 %), high degree of protection IP67 and protective tube made of borosilicate glass with a high mechanical and thermal stability, this luminaire is the ideal solution for harsh and hazardous environments.

More safety with compact electronics

Thanks to its EVG with charging unit and its micro-electronics for an automatic switchover to the emergency lighting mode and battery monitoring, the AB 12 .. NI emergency light luminaire provides a reliable safety and reduced maintenance costs. In the event of a power failure, the luminaire switches over automatically to the emergency lighting mode, whereby only one of the two lamps is lit. You can chose between two versions with 1.5 h

or 3 h emergency operation. The luminaires are equipped with an electronic ballast, which has a reliable EOL circuit. Thus, the lamps are monitored for their correct function and shut down safely in the event of a malfunction at the end of their service life. The charge/discharge and lighting functions are continuously monitored and displayed via an LED-indication. All components are mounted compactly on a removable carrier plate inside the Ex-d housing.

The luminaire for all types of applications

The easy-to-open threaded cover, the large terminal compartment and the lamp assembly on a guide carriage facilitate servicing. An optional external reflector ensures an application-specific light distribution. The optional protective wire guard made of stainless steel provides added safety.



Features

- Robust Ex-d housing
- Two-channel EVG with EOL monitoring
- Operating status indication via LED
- Easy opening due to screw cover on end
- Large terminal compartment
- High degree of protection IP67

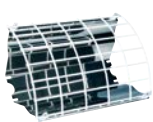
Ordering details



Type	Emergency light duration	Terminals	Through-wiring single-ended	Entry / thread	Threaded plug	Order No.
AB 12 Ni 18/18 1.5h (2 x 18 W)	1.5 h	2 x 3	x	2 x 3/4" NPT, metal thread	1 x 3/4" Ex-d	NOR 000 005 060 302
AB 12 Ni 36/36 1.5h (2 x 36 W)	1.5 h	2 x 3	x	2 x 3/4" NPT, metal thread	1 x 3/4" Ex-d	NOR 000 005 060 310
AB 12 Ni 18/18 3h (2 x 18 W)	3 h	2 x 3	x	2 x 3/4" NPT, metal thread	1 x 3/4" Ex-d	NOR 000 005 060 318
AB 12 Ni 36/36 3h (2 x 36 W)	3 h	2 x 3	x	2 x 3/4" NPT, metal thread	1 x 3/4" Ex-d	NOR 000 005 060 348
AB 12 Ni 18/18 1.5h (2 x 18 W)	1.5 h	2 x 3	x	2 x M25, metal thread	1 x M25 Ex-d	NOR 000 005 060 580
AB 12 Ni 36/36 1.5h (2 x 36 W)	1.5 h	2 x 3	x	2 x M25, metal thread	1 x M25 Ex-d	NOR 000 005 060 582
AB 12 Ni 18/18 3h (2 x 18 W)	3 h	2 x 3	x	2 x M25, metal thread	1 x M25 Ex-d	NOR 000 005 060 581
AB 12 Ni 36/36 3h (2 x 36 W)	3 h	2 x 3	x	2 x M25, metal thread	1 x M25 Ex-d	NOR 000 005 060 583

Scope of delivery without lamp and fixing accessories
Metal cable glands see catalogue part 2: 2.3.12 ff

Accessories



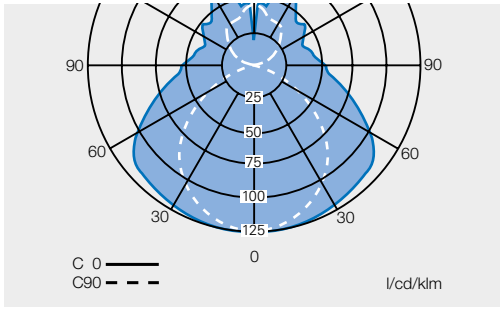
Type	Content	Application	Order No.
Reflector RAB 220	Reflector, AISI 304	for AB 12 Ni 18/18	NOR 003 045 060 403
Reflector RAB 240	Reflector, AISI 304	for AB 12 Ni 36/36	NOR 003 045 060 411
Reflector GRAB 220	Reflector + wire guard ANSI 304	for AB 12 Ni 18/18	NOR 003 045 060 479
Reflector GRAB 240	Reflector + wire guard ANSI 304	for AB 12 Ni 36/36	NOR 003 045 060 487
Reflector RAB 220	Reflector, AISI 316	for AB 12 Ni 18/18	NOR 003 165 060 403
Reflector RAB 240	Reflector, AISI 316	for AB 12 Ni 36/36	NOR 003 165 060 411
Reflector GRAB 220	Reflector + wire guard ANSI 316	for AB 12 Ni 18/18	NOR 003 165 060 479
Reflector GRAB 240	Reflector + wire guard ANSI 316	for AB 12 Ni 36/36	NOR 003 165 060 487

2.9

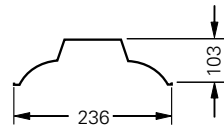
Dimension drawing / Polar curve

AB 12...Ni

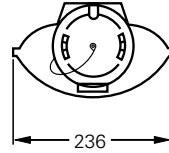
Polar curve AB 12...Ni



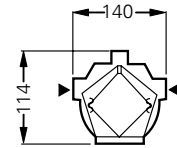
AB 12...



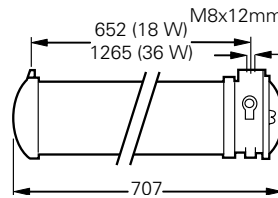
Reflector RAB



Reflector with wire guard GRAB



► entries



Dimensions in mm



Technical data

	AB 12 Ni 18/18	AB 12 Ni 36/36
EC-Type Examination Certificate	LOM 09 ATEX 2062X	LOM 09 ATEX 2062X
Marking accd. to 2014/34/EU	⊕ II 2 G Ex d e ib IIB T5/T6 ⊕ II 2 D Ex tb IIIC T85 °C...T100°C Db	⊕ II 2 G Ex d e ib IIB T5/T6 ⊕ II 2 D Ex tb IIIC T85 °C...T100°C Db
Permissible ambient temperature	-20 °C up to +40 °C (T6) -20 °C up to +55 °C (T5) (specified data -5 °C up to +30 °C)	-20 °C up to +40 °C (T6) -20 °C up to +55 °C (T5) (specified data -5 °C up to +30 °C)
Battery	6 V / 4 Ah NiCd	6 V / 4 Ah NiCd
Rated voltage	220 - 240 V AC	220 - 240 V AC
Rated current	0.17 A	0.33 A
Frequency	50 - 60 Hz	50 - 60 Hz
Charging duration	≥ 14 h	≥ 14 h
Power factor cos φ	≥ 0.9	≥ 0.9
Circuit	EVG with emergency lighting supply	EVG with emergency lighting supply
Protection class	I	I
Lamp / Illuminant	2 x T26 / 18 W	2 x T26 / 36 W
Rated luminous flux	2700 lm ¹⁾	6700 lm ¹⁾
Lamp cap	G13 accd. to IEC 60061-1	G13 accd. to IEC 60061-1
Light output ratio	73%	73%
Luminous flux in emergency operation (1.5 h, one lamp)	675 lm ¹⁾	1072 lm ¹⁾
Luminous flux in emergency operation (3 h, one lamp)	392 lm ¹⁾	392 lm ¹⁾
Dimensions (L x W x H)	707 x 140 x 144 mm	1320 x 140 x 144 mm
Connecting terminals	L1, N and PE: 2 x 2.5 mm ² / PE ext. 2 x 6 mm ²	L1, N and PE: 2 x 2.5 mm ² / PE ext. 2 x 6 mm ²
Enclosure colour	grey RAL 7032 (body), RAL 7016 (cover)	grey RAL 7032 (body), RAL 7016 (cover)
Enclosure material	copper-free aluminium with powder coating	copper-free aluminium with powder coating
Weight	7 kg	12 kg
Cable glands / gland plates / enclosure drilling	direct entry: 2 x 3/4" NPT or 2 x M 25 1 x Ex-d blanking plug 3/4" or M25	direct entry: 2 x 3/4" NPT or 2 x M 25 1 x Ex-d blanking plug 3/4" or M25
Degree of protection accd. to EN 60529	IP67	IP67
Protective cover / protective bowl	borosilicate glass	borosilicate glass

¹⁾ depends on used lamps