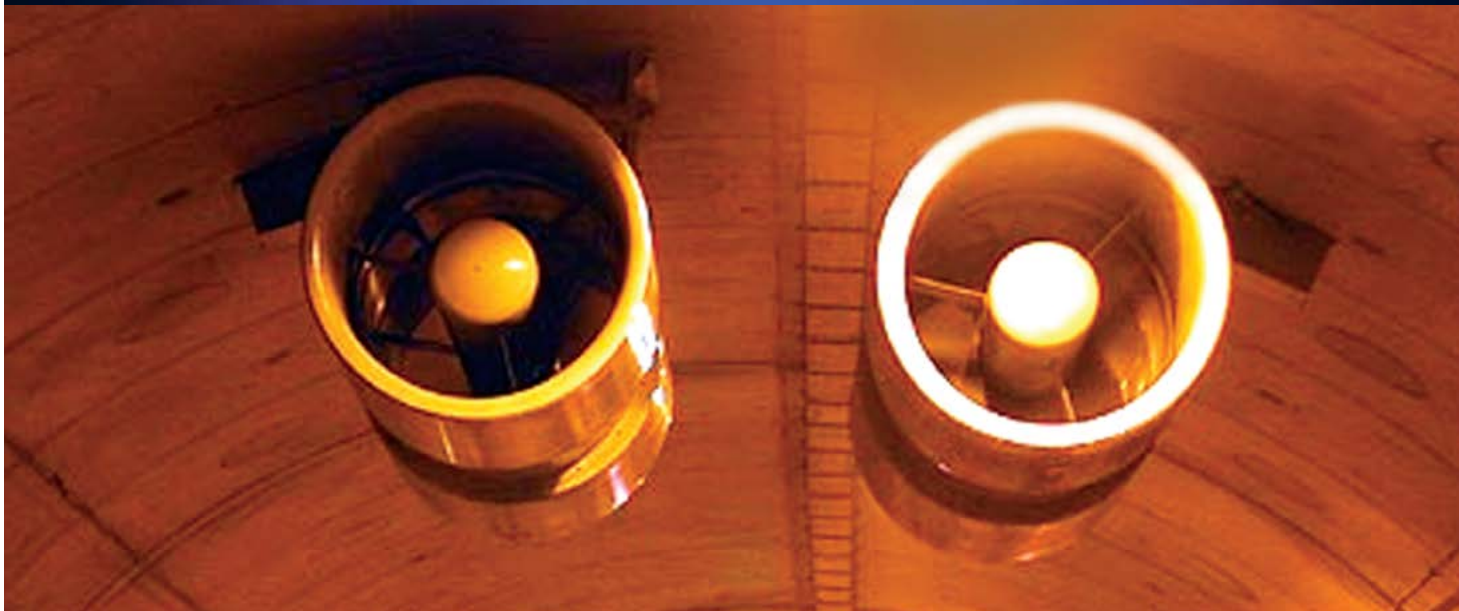
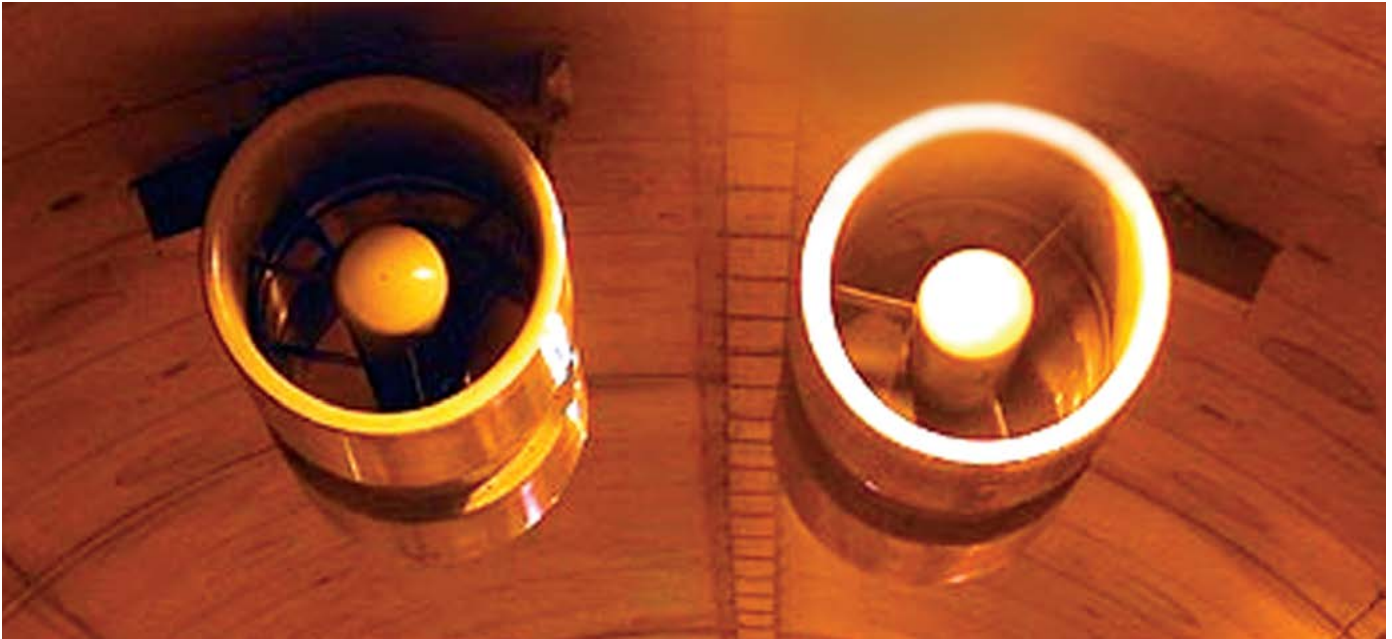


# Beam Fans

Application support for DM1 Pro





## Fresh Air even underground

The tunnel ventilation has two functions: the fresh air supply and simultaneous exhaust gas removal, and the smoke exhaust in the event of a fire. DM1 Pro can configure both operating modes independently and thus always ensure optimum operation.



Robust	Fast	Simple	Service & Support
<ul style="list-style-type: none"> <li>• IP20/IP21 designs provide increased environmental protections</li> <li>• Conformal coated boards protect against aggressive ambient</li> <li>• Best-in-Class ambient temperature range from -30°C to 50°C</li> </ul>	<ul style="list-style-type: none"> <li>• Group motor rated with fuses and breakers for reduction in labor and material costs</li> <li>• 14 basic parameters, Quick Start Wizard and PC Tools for simpler commissioning</li> <li>• Programming samples to include DM1 into common used PLC's (Codesys, STEP)</li> <li>• Ethernet/IP Assist Tool for easy tag integration into RSLogix 5000 software</li> </ul>	<ul style="list-style-type: none"> <li>• Pre-configured applications to simplify complex parameter sets, from standard to multi-pump configurations</li> <li>• Extensive on-board communications reduces cost and improves control capabilities</li> </ul>	<ul style="list-style-type: none"> <li>• Standard two-year warranty with extensions available through certified commissioning</li> <li>• Dedicated team of application engineers and technical resources available to provide pre-sales and aftersales support</li> <li>• Aftermarket program providing spare parts, service and training classes</li> </ul>

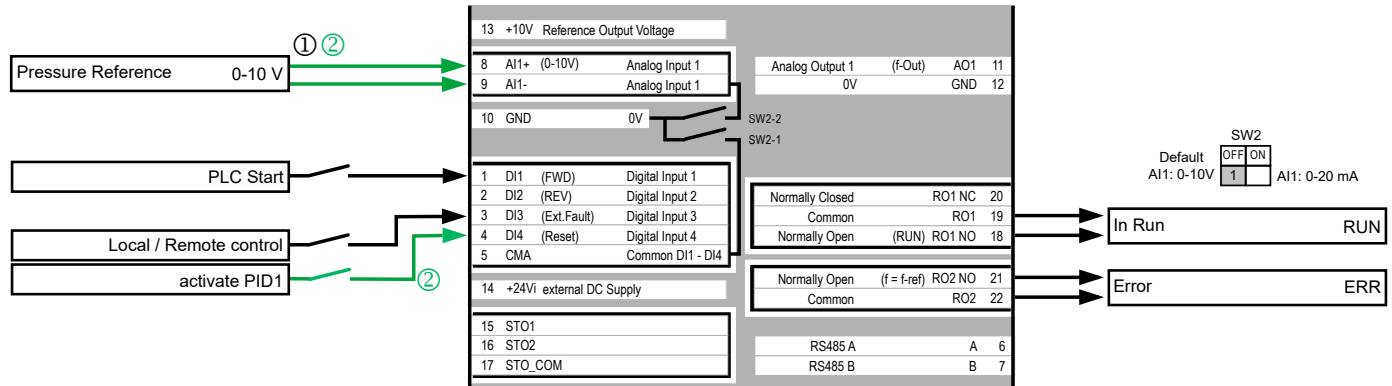


# Wiring example beam fan

The fan can run speed controlled as well as closed loop with a pressure reference:

- ① Via analog input a speed reference is done, the drive runs in open loop control.
- ② Via analog input the pressure feedback is given. Reference control is via the internal potentiometer or via communication. The internal PID controller will control the closed loop pressure control.

Via the local/remote switch the user can select between remote control and manual control. For each mode the signal source can be free configured (terminals, keypad, communication).



## Further application notes

### Common hints

- Electromagnetic compatibility (EMC) [AP040043EN](#)
- Dual Rating – What exactly does that mean? [AP040114EN](#)
- Connecting drives to generator supplies [AP040169EN](#)

### DM1 specific hints

- Application Manual DM1 [MN040049EN](#)
- Communication Manual DM1 [MN040051EN](#)
- Webserver Manual [MN040055EN](#)
- Following link will show you the Application notes for DM1: [www.eaton.com/ap/overview/drives](http://www.eaton.com/ap/overview/drives)
- DM1 Pro-Manuals you can find at: [Eaton.com/dm1](http://Eaton.com/dm1)