

XH300 web panel
with capacitive multi-touch technology

Elegant web visualization



EATON

Powering Business Worldwide

Optimize

your web visualization needs

From your smartphone to your favorite website, HTML 5 structures the digital world around you. Eaton's XH300 web panels with capacitive multi-touch technology bring flexible HTML 5 visualization to a versatile range of applications—from classic machine and system, building automation, IoT and smart home to harsh industrial environments. A high-performance processor and powerful RAM enables complex web content to be easily displayed on modern-designed HMIs.



A modern design available in three sizes:
7-inch, 10.1-inch, and 15.6-inch versions

Key features



Maximum flexibility

The XH300 can be installed in portrait or landscape format to save space. The device orientation can be selected and adapted to your requirements.



Robust, yet refined

The XH300 combines capacitive touch technology with an IP65-rated hardened glass screen. This combination enables the ease of use of a smartphone screen for industrial applications.



High-quality display

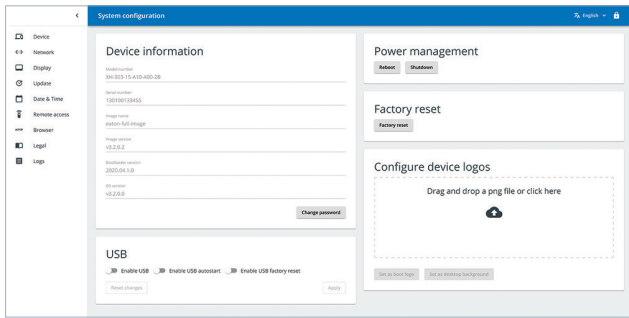
The XH300 has a stunning high-contrast display that remains easy to read, even in ambient light. With an 80/85-degree viewing angle, displayed content can be seen anywhere.



Powerful performance

Due to its high-performance CPU, the XH300 offers all the prerequisites for a modern user interface, fast image changes and the integration of multimedia elements such as video, PDF and web content.

Commissioning made easy



Configuring your web panel

The integrated network configuration tool provides efficient options to commission the XH300 for your solution. The panel can be accessed via a local browser or a connected device.



Onboard interfaces

The XH300 Ethernet interface enables connection to other devices in the Eaton portfolio. The USB port allows for seamless firmware updates and log file exportation.

A flexible visualization solution

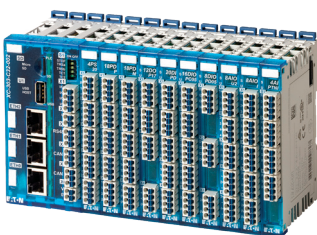
The XH300 relies on Linux, a flexible and industry-proven operating system. Whether it's cloud application dashboards, or visualizations running on local devices, the XH300 has your application needs covered.

With a host of Eaton (or third-party) automation products, the XH300 is ideal for displaying operating data or web visualizations from a PLC, control relay, or other Eaton device. There are a variety of options to connect these devices and collect data.

Eaton XH-303 web panel (with HTML browser)



Ethernet



Eaton XC-303 modular PLC
(with integrated web server)



Eaton easyE4 control relay
(with integrated web server)



Other Eaton devices
(with integrated web server)

Application examples

The XH300 web panels support the web visualization of any controller with a web server. If you want to carry out the visualization on-site, it is possible to collect information about the system via the web server in the respective device and display it via the HTML 5 browser.

Machine building

In this case, the web panel is located in the control room of the plant, for example, and enables central access to all connected devices with a web server, such as Eaton XV300 HMI PLC devices.

If the user is off-site, the visualization can still be run without any problems using the HTML 5 browser on the XH300 web panel. For this purpose, the system data is collected in an IoT cloud solution, for example, and accessed via the web panel.



Ethernet



XH-303 web panel

- Display of the machine data
- Remote control of the system
- Access to any HTML 5 website

XV-303 HMI-PLC

with Galileo or Codesys web server

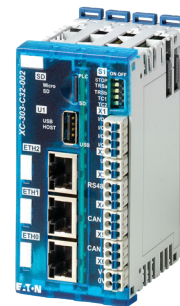


Building automation

In building automation applications, the XH300 can be used in hotel buildings and connected to Eaton's easyE4 control relay via Ethernet in order to display light or temperature statuses and adjust them accordingly.



Ethernet



XH-303 web panel

- Power management
- Lighting control
- Ventilation control in HVAC applications

XC300 PLC
with web server



Technical data



7-inch version



10.1-inch version



15.6-inch version

	XH-303-70-A10-A00-2B	XH-303-10-A10-A00-2B	XH-303-15-A10-A00-2B
Part number	XH-303-70-A10-A00-2B	XH-303-10-A10-A00-2B	XH-303-15-A10-A00-2B
Catalog number	199882	199883	199884
Display			
Display size	7-inch widescreen	10.1-inch widescreen	15.6-inch widescreen
Resolution	1024 x 600 pixels	1280 x 800 pixels	1366 x 786 pixels
Reading angle	85° from all sides	85° from all sides	85°/85°/80°/80°
Color depth	24-bit colors	24-bit colors	24-bit colors
Backlight	LED	LED	LED
Display technology	TFT	TFT IPS	TFT
Operation			
Touch sensor	Multi-finger touch screen	Multi-finger touch screen	Multi-finger touch screen
Technology	Projected Capacitive Touch (PCT)	Projected Capacitive Touch (PCT)	Projected Capacitive Touch (PCT)
Enclosure			
Front glass	Hardened	Hardened	Hardened
Device dimensions (W x H x D)	196 x 135 x 51 mm	269 x 174 x 58 mm	404 x 255 x 77 mm
Mounting cut-out (W x H)	183 x 122 mm ±1	255.5 x 160.5 mm ±1	388 x 239 mm ±0.5
System			
Processor	ARM Cortex-53, 1.8 GHz Quad-Core processor	ARM Cortex-53, 1.8 GHz Quad-Core processor	ARM Cortex-53, 1.8 GHz Quad-Core processor
Memory (flash)	8 GB eMMC	8 GB eMMC	8 GB eMMC
RAM working memory	2 GB	2 GB	2 GB
Interfaces as standard	1 x Ethernet 10/100/1000 Mbit	1 x Ethernet 10/100/1000 Mbit	1 x Ethernet 10/100/1000 Mbit
USB interface	1 x USB Host, USB 2.0 type A	1 x USB Host, USB 2.0 type A	1 x USB Host, USB 2.0 type A
Power supply	24 Vdc	24 Vdc	24 Vdc
Operating system	Linux	Linux	Linux
Web browser	HTML 5	HTML 5	HTML 5
Environment			
Approvals	CE, (cUL in preparation)	CE, (cUL in preparation)	CE, (cUL in preparation)
Degree of protection	Front: IP65 / Rear: IP20	Front: IP65 / Rear: IP20	Front: IP65 / Rear: IP20
Operating ambient temperature	0 to +50 °C	0 to +50 °C	0 to +50 °C
Storage temperature	-20 to +60 °C	-20 to +60 °C	-20 to +60 °C

For more information, visit
Eaton.com/xh300hmi

Eaton
 1000 Eaton Boulevard
 Cleveland, OH 44122
 United States
 Eaton.com

© 2023 Eaton
 All Rights Reserved
 Printed in USA
 Publication No. BR048007EN / Z27960
 December 2023

Eaton is a registered trademark.
 All other trademarks are property
 of their respective owners.

Follow us on social media to get the
 latest product and support information.

