

# Eaton PowerXL DG1 pump panel

## Cellular gateway activation instructions for Eaton's **Pump control and monitoring** mobile application



### General description

Eaton's **Pump control and monitoring** mobile application allows users to interact with Eaton variable frequency drives (VFDs) in more ways than ever before:

- **Monitor devices remotely.** Use the app to check on VFD status.
- **Control your device remotely.** Use the app to start and stop equipment remotely or reduce time spent operating and managing assets.
- **Get troubleshooting support.** Use the app to easily locate documentation or reach Eaton's product support staff directly.

### Confirm hardware

Locate the cellular gateway either on the front of the door or the side of the enclosure, depending on the enclosure size of the drive.

See back side for a list of PowerXL™ DG1 pump panels the gateway ships with as standard.

# EATON

*Powering Business Worldwide*

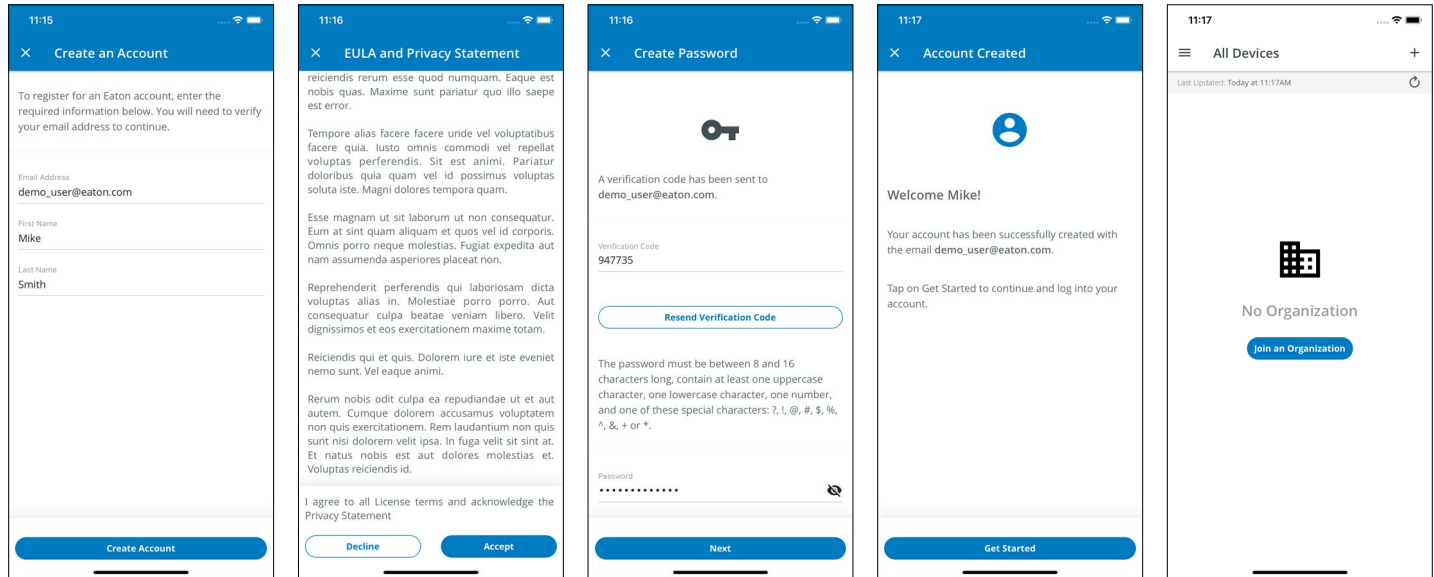
## Activation

To register the hardware and request access to Eaton's **Pump control and monitoring** mobile application, follow these steps:

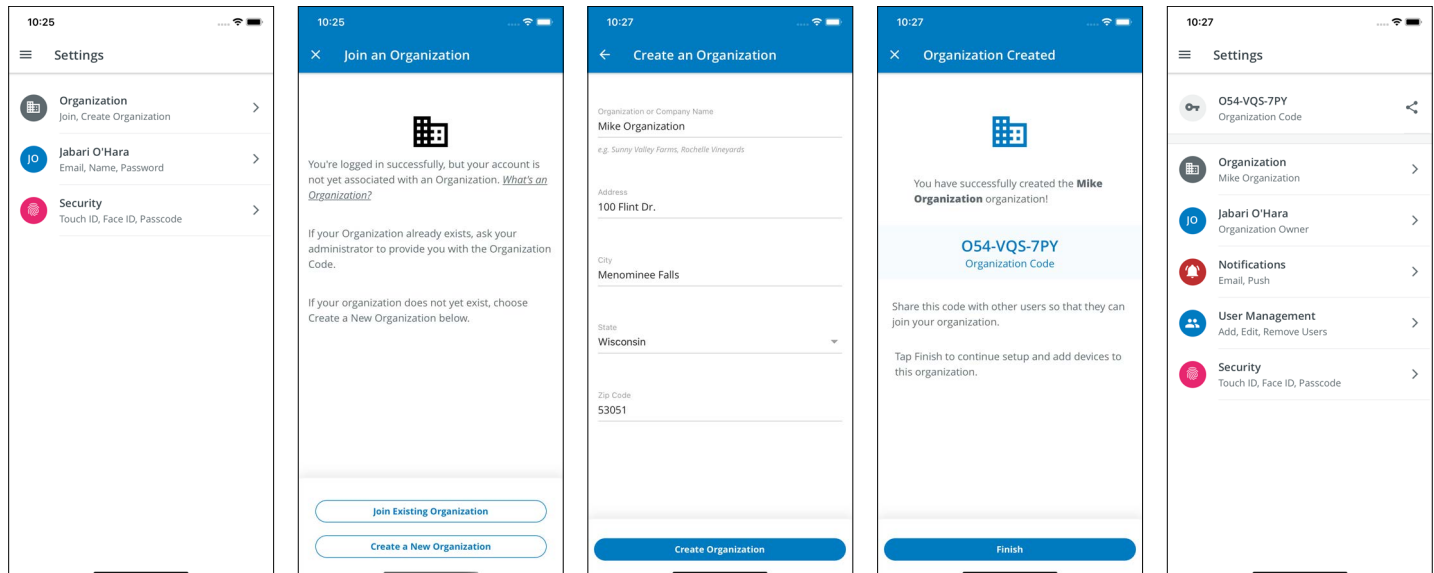
1. Download the **Pump control and monitoring** mobile application from either the Apple® App Store or Google Play Store.



2. Open the app and click Get Started. Then, click Sign Up. This page will allow you to create a **Pump control and monitoring** account using your email and a password of your choice.

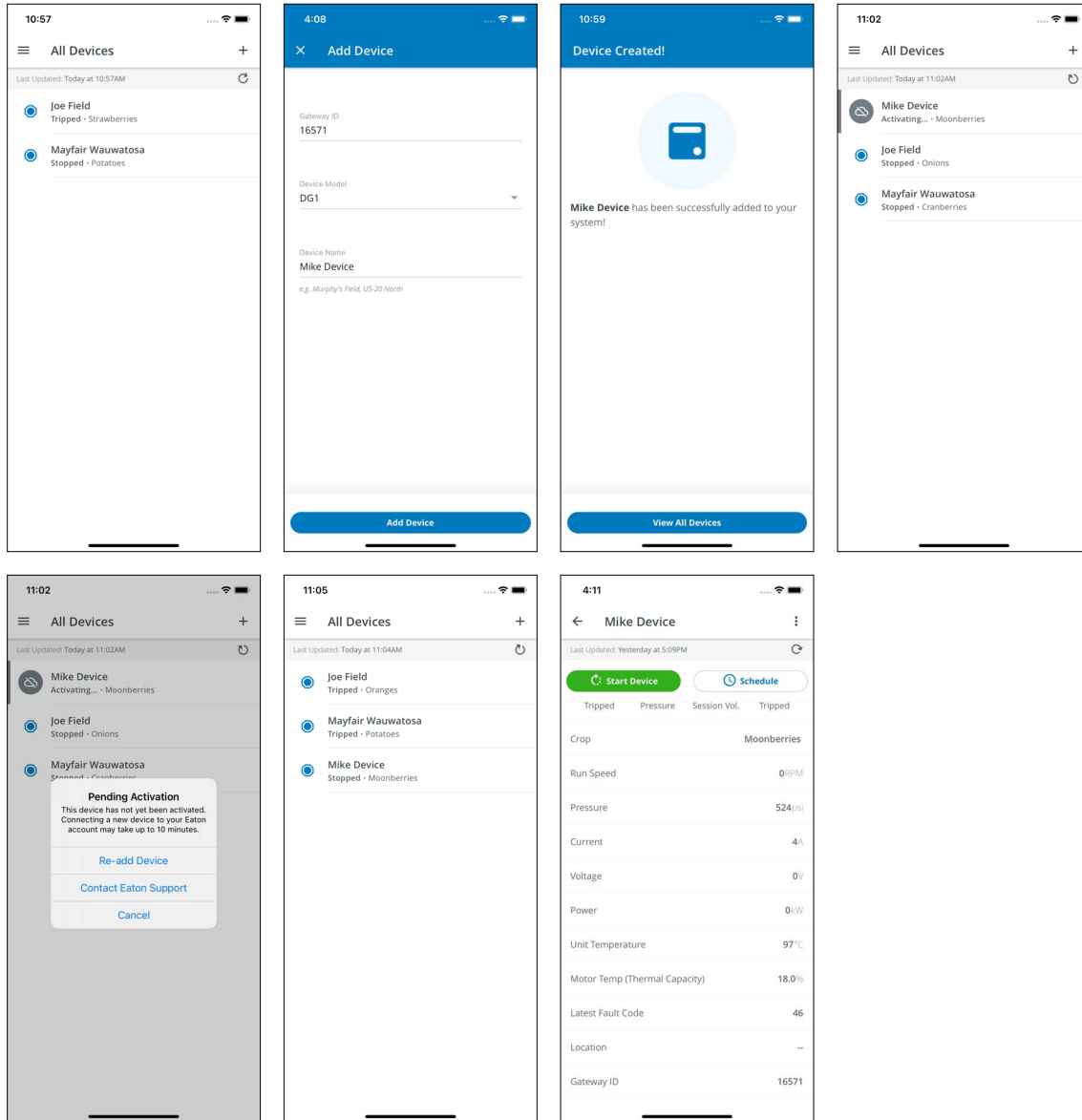


3. Log into **Pump control and monitoring** mobile application and create an organization.





4. Add a device to your organization using the Gateway ID, which is a number written on the gateway sticker label.



Once a device is added to your organization, the gateway will be automatically activated and start sending data to the app. This process takes about 10 minutes.



Scan this code to go to our **Pump control and monitoring** download page.

Effective July 2023

The following PowerXL DG1 pump panel catalog numbers ship standard with the cellular gateway for the **Pump control and monitoring** mobile application.

**Table 1.**

Horsepower variable torque, standard duty	Horsepower constant torque, heavy duty	Description	Catalog number	Style number	Enclosure size
25	20	DG1 pump, 480 V, 25 hp, VT, white, NEMA® 3R, CB, SPD	<b>EGS0344B380-PUMP01</b>	3-4903-10A	AX
30	25	DG1 pump, 480 V, 30 hp, VT, white, NEMA 3R, CB, SPD	<b>EGS0404B380-PUMP01</b>	3-4903-11A	AX
40	30	DG1 pump, 480 V, 40 hp, VT, white, NEMA 3R, CB, SPD	<b>EGS0524B380-PUMP01</b>	3-4903-12A	AX
50	40	DG1 pump, 480 V, 50 hp, VT, white, NEMA 3R, CB, SPD	<b>EGS0654B380-PUMP01</b>	3-4903-13A	BX
60	50	DG1 pump, 480 V, 60 hp, VT, white, NEMA 3R, CB, SPD	<b>EGS0774B380-PUMP01</b>	3-4903-14A	BX
75	60	DG1 pump, 480 V, 75 hp, VT, white, NEMA 3R, CB, SPD	<b>EGS0964B380-PUMP01</b>	3-4903-15A	BX
100	75	DG1 pump, 480 V, 100 hp, VT, white, NEMA 3R, CB, SPD	<b>EGS1244B380-PUMP01</b>	3-4903-16A	CX
125	100	DG1 pump, 480 V, 125 hp, VT, white, NEMA 3R, CB, SPD	<b>EGS1564B380-PUMP01</b>	3-4903-17A	CX
150	125	DG1 pump, 480 V, 150 hp, VT, white, NEMA 3R, CB, SPD	<b>EGS1804B380-PUMP01</b>	3-4903-18A	CX
200	150	DG1 pump, 480 V, 200 hp, VT, white, NEMA 3R, CB, SPD	<b>EGS2404B380-PUMP01</b>	3-4903-19A	CX

**Eaton**  
 1000 Eaton Boulevard  
 Cleveland, OH 44122  
 United States  
 Eaton.com

© 2023 Eaton  
 All Rights Reserved  
 Printed in USA  
 Publication No. IL040053EN / Z27674  
 July 2023

For technical questions or guidance, please contact Brightlayer Technical Support at **877-386-2273, option 2, option 9** or email **BLsupport@eaton.com**.