

Windows CE
Image Version 2.26.4



Imprint

Manufacturer

Eaton Automation AG
Spinnereistrasse 8-14
CH-9008 St. Gallen
Schweiz
www.eaton-automation.com
www.eaton.com

Support

Region North America

Eaton Corporation
Electrical Sector
1111 Superior Ave.
Cleveland, OH 44114
United States
877-ETN-CARE (877-386-2273)
www.eaton.com

Other regions

Please contact your supplier or send an E-Mail to:
automation@eaton.com

Original instructions

The German version of this document is the original instructions.

Editor

Manfred Hüppi

Brand and product names

All brand and product names are trademarks or registered trademarks of the owner concerned.

Copyright

© Eaton Corp, CH-9008 St. Gallen

All rights reserved, also for the translation.

None of this document may be reproduced or processed, duplicated or distributed by electronic systems in any form (print, photocopy, microfilm or any other process) without the written permission of Eaton Corp, St. Gallen.

Subject to modifications.

Contents

1	General.....	7
1.1	Startup behavior.....	7
1.1.1	XV400.....	7
1.1.2	XV100.....	8
1.1.3	XC150.....	12
1.2	Autoexec.reg.....	15
1.3	Autoexec.bat.....	16
1.4	Autoexec.bmp.....	19
1.5	CTRL/DOWNLOAD button.....	20
1.5.1	XV400.....	20
1.5.2	XV100.....	20
1.5.3	XC150.....	20
1.6	File system.....	21
1.6.1	Information on the File System in InternalStorage.....	22
1.7	Shortcuts.....	23
1.8	Power supply interruption.....	24
2	Ethernet.....	25
2.1	Access to PC.....	25
2.1.1	Name resolution in Windows networks.....	26
2.1.2	Network access procedure.....	27
2.2	Access to MICRO PANEL.....	28
2.3	Name resolution (CEHosts).....	29
2.4	Connecting with XC-150.....	30
2.4.1	General Information.....	30
2.4.2	Connect to the XC-150.....	30
3	Printing.....	32
3.1	General.....	32
3.2	Printing via Ethernet.....	33
3.3	Parallel interface.....	34
3.4	USB interface.....	35
3.5	Serial Interface.....	36
4	System Settings.....	37
4.1	General.....	37
4.2	Command Line Parameters.....	38
4.2.1	XV400.....	38
4.2.2	XV100.....	38
4.3	Expanding the Control Panel.....	39
4.4	Date / Time and Time Zone setting (DateTime).....	40
4.4.1	Date/Time.....	40
4.4.2	Time Zone.....	41
4.4.3	Command Line Parameters.....	41
4.4.4	Daylight Saving Time.....	41
4.5	Screen Setting (Display).....	42
4.5.1	Backlight.....	42

Contents

4.5.2	Contrast.....	42
4.5.3	Orientation.....	43
4.5.4	Colors.....	43
4.5.5	Boot option (startup with hidden OS shell).....	43
4.5.6	Command Line Parameters.....	44
4.6	Software Input Panel.....	46
4.6.1	Keyboard.....	46
4.6.2	Mini-Keyboard.....	47
4.6.3	Change the button size on the keyboard:.....	47
4.6.4	Change the button size on the mini-keyboard:.....	47
4.6.5	Setting Example.....	48
4.7	License Administrator (License).....	49
4.8	Network Setting (Network).....	50
4.8.1	IP address.....	50
4.8.2	DNS.....	51
4.8.3	WINS.....	52
4.8.4	Info.....	52
4.8.5	Command Line Parameters.....	53
4.9	Owner.....	55
4.10	Net Setup (Netsetup).....	56
4.11	System Properties (System).....	57
4.11.1	General.....	57
4.11.2	Memory.....	57
4.11.3	MISC.....	58
4.11.4	Device.....	58
4.11.5	Command Line Parameters.....	59
4.12	Touch (Touch).....	60
4.12.1	Touch enable/disable.....	60
4.12.2	Touch calibration.....	61
4.12.3	Mode selection.....	62
4.13	USB Pointer Device.....	63
4.14	Keyboard Setup (Keyboard).....	64
4.14.1	Command Line Parameters.....	64
4.15	BootDevice Setup (BootDevice).....	65
4.15.1	Command Line Parameters.....	65
4.15.2	Mandatory start from StorageCard.....	65
4.15.3	Update of the operating system.....	65
4.16	StorageManager (StorageManager).....	66
4.16.1	Store Info.....	66
4.16.2	Partitions.....	66
4.16.3	Recommended settings for internal memory.....	67
4.16.4	Recommended settings for external data carrier.....	67
5	Network Test.....	68
5.1	Introduction.....	68
6	ActiveSync Connection.....	70
6.1	General.....	70
6.2	Repllogswitch.....	71
6.3	Procedure: ActiveSync.....	72
6.4	Procedure: Manual Server.....	74

7	Programs	75
7.1	General	75
7.2	Ping	76
7.3	Format	77
7.4	Remote Server	78
7.4.1	Command Line Parameters	79
7.4.2	Password Settings	80
7.5	Remote Client	81
7.5.1	Options	82
7.5.2	Detect	82
7.5.3	System Menu	85
7.5.4	Command Line Parameters	86
7.6	FTP Server	87
7.6.1	Password Settings	88
7.6.2	Command Line Parameters	88
7.6.3	WAN	89
7.7	HTML Browser (Internet Explorer)	90
7.7.1	Command Line Parameters	92
7.7.2	INI File	93
7.7.3	URL file	95
7.7.4	ActiveX Components	96
7.8	Proxy Administrator (ProxyAdmin)	97
7.9	WEB Server (HTTPD)	99
7.9.1	General Settings	99
7.9.2	Virtual Directory Settings	100
7.9.3	HTTP Authentication	101
7.9.4	Sample Settings	103
7.9.5	WEB Server Start/Stop	103
7.10	File Server	104
7.10.1	General Settings	104
7.10.2	Virtual Directory Settings	104
7.10.3	File Server Start/Stop	105
7.10.4	Sample Settings	105
7.10.5	Access to the enable:	106
7.10.6	Note for users of newer Windows versions	106
7.10.7	Use without 297Hauthentication	106
7.11	User Administration (UserAdmin)	107
7.12	SNTP Client	108
7.12.1	General Settings	108
7.12.2	Sample Settings	109
7.12.3	Start/Stop/Refresh of the SNTP client	110
7.13	Registry Editor	111
7.13.1	Command Line Call	112
7.13.2	File .REG	112
7.14	Background Picture (WALLPAPER)	114
7.15	CF Backup	115
7.15.1	Command Line Call	116
7.16	AutoLaunch	117
7.17	Device Restart (Reboot)	118
7.18	Information Display (Info)	119
7.19	File System Size (StorageMemorySize)	120

Contents

7.20	System Performance (IdleCount).....	121
7.21	Extended Copy (ExtCopy).....	122
7.22	Gui4Batch	124
7.23	Holdfont.....	126
7.23.1	Galileo Runtime System (from 8.0.0).....	127
7.24	VNCGateway	128
7.24.1	Command Line Parameters	128
7.25	NotepadCE.....	129
7.26	RNAccess	130
7.26.1	Command Line Parameters	130
7.26.2	Remote Access (RAS) entry	132
8	Programs from Windows CE 5.0 Professional plus.....	134
8.1	File Viewer Applications	134
8.1.1	File Viewer Application Limitations.....	134
8.1.2	Microsoft PDF Viewer	135
8.1.3	Microsoft Image Viewer.....	135
9	Licensing	136
9.1	General	136
9.2	Relicensing Procedure	137
10	Index.....	138
10.1	Listing.....	138
11	Notes	140

1

General

The operating system is implemented in English on all **MICRO PANEL** devices with Windows CE.

Note:

This documentation applies to **MICRO PANEL** devices which have the Windows CE 3.0 operating system from **image version 2.20.0** and Windows CE 5.0 from **image version 2.26.1**.

1.1

Startup behavior

1.1.1

XV400

With all **MICRO PANEL** devices from image version 2.00 (see also [System properties](#)), the operating system is started from a PCMCIA or CompactFlash card. The operating system is stored in the OS directory on the Flash card. The device only contains the bootloader which searches for the operating system on the Flash card when the device is started, and then launches it. The following screen at least is shown during startup:

```
CF-Bootloader V1.30
....
Type          xxx-xxx.....
Serial No.    0316.....
License       100 points
DHCP          disabled
IP address    192.168.1.1
Subnet mask   255.255.255.0
Network name

Slot 0: Init -> ok
....
Compact Flash size: xxx bytes
....
Search xxxx.BIN -> found
Loading image: xxxx bytes
```

The display shows different information such as the network settings, the serial number and the number of license points. If the Flash card does not contain an operating system, the screen shows the following:

→ Impossible to boot on CF-Slot!

If this display appears on the screen, this means that either there is no Flash card in the device, the card is not correctly formatted or does not contain a valid operating system. The valid operating system depends on the device concerned!

Note:

The display may vary according to the device type!

Important:
The PC must contain a suitable drive for writing the PCMCIA or CompactFlash card for the first time!

After Windows CE is launched, the following functions are run if the [CTRL/DOWNLOAD button](#) is not pressed:

- 1 The registry entries are transferred once the AUTOEXEC.REG file is found in the root directory of the Flash card. See also chapter [Autoexec.reg](#).
- 2 The bootloader also looks for the AUTOEXEC.BAT file in the root directory. This file is run if it is present. See also chapter [Autoexec.bat](#).

1.1.2

XV100

With all XV100 **MICRO PANEL** devices from image version 2.24 (see also [System properties](#)), the operating system is started from an internal memory or SD Flash card. The operating system is stored in the OS directory.

Startup from InternalStorage

If startup proceeds from the InternalStorage, the operating system is started from a contiguous memory area. This operating system is stored on the device during production. On startup the versions of the OS (contiguous memory / InternalStorage\OS) are compared. If the versions differ, the operating system InternalStorage\OS\XV102.bin is copied to the contiguous memory area and the device is restarted.

The following screen at least is shown during startup:

```
Bootloader V4.0.0 (xxxx)
....
-----
Type                XV-.....
Serial No.          10.....
License             140 points
DHCP                disabled
IP address          192.168.1.1
Subnet mask         255.255.255.0
Network name        MI.....
-----
Loading NAND FLASH image @ 0x01800000
Image found
Image start         0x800F0000
Image size          .....
Image revision      2.xx.xx (xxxx)
Image minimum       2.xx.xx (xxxx)
Jumping to          0x800F1000
```

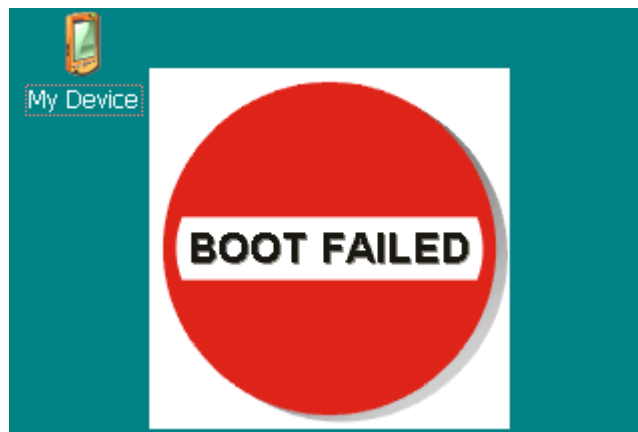

Note:
The display may vary according to the device type!

Directory InternalStorage\OS not available

If the directory InternalStorage\OS is not found, the device starts normally. The copy in the contiguous memory area contains all the basic functionality of the operating system. Only a few DLLs from the Web Server are omitted.

File InternalStorage\OS\XV102.BIN not available

If the directory InternalStorage\OS\ is found, but the file XV102.BIN is not available, the device starts regardless. No Autoexec.* files are then processed and the legend „BOOT FAILED“ appears on the screen. This permits the user to correctly configure the device.



Operating system in contiguous memory is defective

If the operating system in contiguous memory is for any reason defective, the help operating system is loaded. This is also located in contiguous memory. This help operating system permits the user to reconfigure the device. Functionality is restricted, however. No Autoexec.* files are processed and the legend „BOOT FAILED“ appears on the screen.

In order to reload the operating system and the help operating system in contiguous memory the user has some batch files available in the folder \Windows:

- Replnt2Int.bat Copies the OS from InternalStorage\OS into contiguous memory.
- RepSD2Int.bat Copies the OS from StorageCard \OS into contiguous memory

- Replnt2Ext.bat Copies the OS as help operating system from InternalStorage\OS into contiguous memory
- RepSD2Ext.bat Copies the OS as help operating system from StorageCard \OS into contiguous memory

File InternalStorage\OS\XV102.BIN is outdated

In the case of different versions, the OS from InternalStorage\OS\XV102.bin is copied into contiguous memory. During copying it will be noted that the OS version is outdated. The existing OS will start, but without processing Autoexec.* and with the legend „BOOT FAILED“ displayed on the screen. The device can then be equipped with an OS version with which it can be properly booted.

Starting from the Storage Card

If starting from the storage card, the OS (XV102.bin) will be loaded directly out of \StorageCard\OS.

During start-up the following information will as a minimum be displayed:

```
Bootloader V4.0.0 (xxxx)
....
-----
Type                XV-.....
Serial No.          10.....
License             140 points
DHCP                disabled
IP address          192.168.1.1
Subnet mask         255.255.255.0
Network name        MI.....
-----
Loading \StorageCard\OS\XV102.BIN
Image found
Image date          DD.MM.YYYY HH:MM
Image start         0x800F0000
Image size          .....
Image revision      2.xx.xx (xxxx)
Image minimum       2.xx.xx (xxxx)
Jumping to          0x800F1000
```

Note:
The display may vary according to the device type!

Storage Card or StorageCard\OS\XV102.BIN not found

If the storage card is not found, the boot-loaded remains in an infinite loop. The screen displays that the storage card was not found and that one must press the CTRL/DOWNLOAD button. Pressing the CTRL/DOWNLOAD button leads the Help system to be loaded. This is found in contiguous memory. This Help system permits the user to reconfigure the device. Functionality is restricted, however. No Autoexec.* files are processed and the legend „BOOT FAILED“ appears on the screen.

After Windows CE is launched, the following functions are run:

- 1 The bootloader searches for the AutoLaunch.inf file on the SD Flash card. If this file is present, the program is started under [AutoLaunchBoot]. See also chapter [AutoLaunch](#).
- 2 If the boot option „Boot up with hidden OS Shell“ is activated, the file AUTOEXEC.BMP will be sought in the main directory. If this file is found, it will be loaded and displayed on-screen. See section “Autoexec.bmp” for further details.
- 3 The registry entries are transferred when the AUTOEXEC.REG file is found in the root directory of the boot device. See also chapter [Autoexec.reg](#).
- 4 The bootloader also looks for the AUTOEXEC.BAT file in the root directory. This file is run if it is present. See also chapter [Autoexec.bat](#).

If CTRL/DOWNLOAD button is pressed during start-up, actions 2 to 4 above will be undertaken.

1.1.3

XC150

Chapter 2.4 (Connecting with XC-150) describes how to make a connection to a XC-150 device.

The startup behavior is basically the same as with XV100 devices (see chapter 1.1.2 [XV100](#)). But there are a few additional features:

The Remote Server and the Ftp Server are started automatically:

- when the device was started into the Detect mode with the CTRL button
- if no regular start of the operating systems could be made (equivalent to BOOT FAILED)

Since XC150 devices have no display, the various states are indicated by three LEDs. The states are described on the next pages.

More states are possible, because other applications (i.e. a PLC) can access the LEDs too.

1 General

1.1 Startup behavior

Operating conditions

Operating system booted:



Operating system booted in detect-mode:



Error conditions

No SD-card found:
(COM flashes orange)



Remedy:

- Insert a SD-card
- By pressing the CTRL button, the device can be started from the internal OS.

Operating system too old or not found:
(COM flashes red)



Remedy:

- Copy a newer OS on the SD-card
- By pressing the CTRL button, the device can be started from the internal OS.

Boot-Error:



Occurs when...

- a invalid OS is saved in the InternalStorage
- the internal OS has been started due to pressing the CTRL button

Hardware-Error:



Make sure that the bridge on pin header UPD RUN is not set to UPD.

Otherwise this is a service case, please contact your distributor.

LED status table

The red color indicates an unusual operating condition.

Instance	state	Run/Stop	SF	COM
Hardware	power supply off	-	-	-
	power supply on	O	O	O
Firmware	runs	O	-	-
	CTRL button activated	O	G	-
	operating system too old or not found	O	X	R flashing
	no SD-card found	O	X	O flashing
	booting operating system	O	X	O
OS	runs	O	-	-
	Start in detect-mode	O	G	-
	Autoexec.bat doesn't run	O	O	-
	Start with boot-failure; Autoexec.bat doesn't run	O	O	-
OS	CAN / Profibus not communicating	*	*	-
	CAN / Profibus communicates	*	*	G

legend:

dark	-
orange	O
red	R
green	G
not determined by instance	*
superposed state possible	X

1.2

Autoexec.reg

Customer-specific registry entries can be configured using the AUTOEXEC.REG file when the **MICRO PANEL** starts up. The file must be stored in the root directory of the boot device. The registry is used for different settings (see also chapter [Registry Editor](#)). When the **MICRO PANEL** is started, the registry is set according to the image, partly also known as the CE kernel. All other necessary registry entries must be contained in this file.

The file format is described in the chapter « [Registry Editor – .REG File](#) ».

Note:

The file AUTOEXEC.REG file is not executed if the [CTRL/DOWNLOAD button](#) is pressed during the startup!

1.3

Autoexec.bat

A customized panel start can be implemented with the AUTOEXEC.BAT start file. This enables command line commands to be executed without a keyboard. The file must be stored in the root directory of the device. A search is carried out for the «Autoexec.bat» file for a maximum of 60 seconds after the operating system is started. If the file is found, it is executed using a «CMD» Shell. The «CMD» Shell is given a parameter (%1) for the AUTOEXEC.BAT file with the name of the boot device. This parameter can be used to start programs from the correct device:

Note:

The file AUTOEXEC.REG file is not executed if the [CTRL/DOWNLOAD button](#) is pressed during the startup!

Important:

If a download is executed with the GALILEO Design Tool, the AUTOEXEC.BAT file is created again on the basis of the INI file in the GALILEO project. This means that any required settings must be added to the INI file. For more information on this refer to the chapter «INI File Startup» in the GALILEO online documentation.

Example of an «Autoexec.bat» file:

```
ECHO OFF
REM *****
REM Verify boot device, if parameter is not
REM available, the boot device is StorageCard
SET bootdev=StorageCard
IF "%1"==" " GOTO START
SET bootdev=%1
REM *****
:START
REM
START Shortcut -p GRSW3.EXE
START CeRemoteSvr.exe -h
START GRSW3.EXE
ECHO ON
```

This example initially checks whether the pass parameter (%1) is set for the boot device. If not, StorageCard is defined the boot device. A link file for the GALILEO runtime system is then created on the desktop, the «Remote Server» application is then started and finally the GALILEO runtime. See also [Shortcuts](#).

The following MSDOS compatible commands are available:

ATTRIB	Shows file attributes or changes them.
CALL	Calls a batch program from another one.
CD, CHDIR	Changes the current directory or shows its name.
CLS	Clears the screen content.
COPY	Copies one or several files to another position.
DATE	Changes the set date or displays it.
DEL	Deletes one or several files.
DIR	Lists the files and subdirectories of a directory.
ECHO	Displays messages or switches the command display on/off.
ERASE	Deletes one or several files.
EXIT	Ends the CMD.EXE command interpreter.
GOTO	Continues the execution of a batch program at a specific label.
HELP	Displays the Help for the command line commands.
IF	Processes expressions with conditions in a batch program.
MD, MKDIR	Creates a directory.
MOVE	Moves one or several files.
PATH	Creates the search path for executable files or displays this.
PAUSE	Breaks the execution of a batch processing file.
PROMPT	Modifies the entry prompt.
RD, RMDIR	Removes (deletes) a directory.
REM	Introduces comments in a batch program (batch files).
REN, RENAME	Renames one or several files.
SET	Sets or removes environment variables or displays them.
SHIFT	Moves the position of replaceable parameters in a batch program.
START	Starts a separate window for executing the program.
TIME	Sets the system time or displays them.
TYPE	Displays the content of a text file.

Detailed Help on the commands can be displayed using the HELP [Command] instruction.

The following **MICRO PANEL** specific commands are also available:

DELAY -t n	Time delay by n seconds before the next line within a BATCH file (e.g. Autoexec.bat) is executed. Important: Do not use START for the Delay call! Parameter -q is used to suppress the outputs of the program.
Extended Copy (ExtCopy)	For more information see chapter .Extended Copy (ExtCopy)

1.4

Autoexec.bmp

During the startup of the device, the bitmap «Autoexec.bmp» can be displayed instead of the Windows CE user interface if required. This option is set in «Control Panel Display», see [Boot Option \(Startup with hidden OS Shell\)](#). The file is stored in the root directory of the boot device.

Note:

The AUTOEXEC.BMP file is not shown if the [CTRL/DOWNLOAD button](#) is pressed during the startup!

1.5 CTRL/DOWNLOAD button

1.5.1 XV400

The CONTROL button on the device has two different functions:

- 1 If the button is pressed on startup, the bootloader will list all directories and files on the Compact Flash card. This can be useful when analyzing problems. Windows CE is then started in the usual manner.
- 2 If the button is held down during the Windows CE startup (after the bootloader), the [Autoexec.bat](#) and [Autoexec.reg](#) files are not run.

Note:
The button is labeled depending on the MICRO PANEL either with CTRL or DOWNLOAD.

See also chapter [Startup behavior](#), [Autoexec.reg](#), [Autoexec.bat](#) and [Autoexec.bmp](#)

1.5.2 XV100

The CONTROL button on the device has three different functions:

- 1 If the button is pressed on startup and held down for at least 3 seconds, the device will start from the OS file \StorageCard\OS\XV102.BIN irrespective of which boot device is defined.
- 2 If the button is held down during the Windows CE startup (after the bootloader, i.e. "Jumping to 0x800F1000h" was displayed), the files [Autoexec.bat](#), [Autoexec.reg](#) and [Autoexec.bmp](#) are not run.
- 3 If the button is pressed on startup and is released after the display of "CTRL button pressed", the "Debug mode active!" state is set which is required for developing the device.

1.5.3 XC150

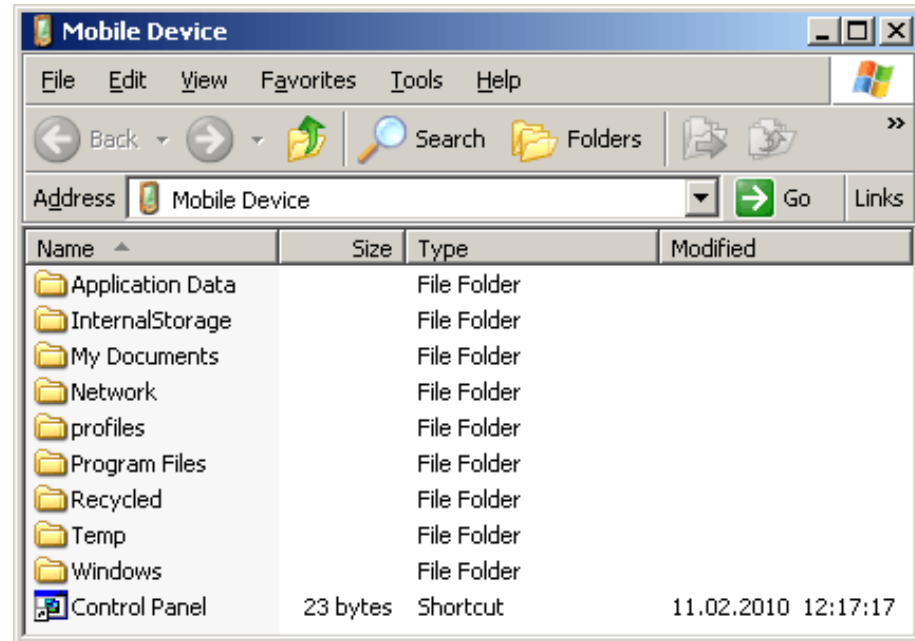
The CONTROL button on the device has two different functions:

- 1 If the button is pressed on startup and held up to the SF LED is solid green, the device starts in the detect-mode. In this mode, the files [Autoexec.bat](#), [Autoexec.reg](#) and [Autoexec.bmp](#) are not executed.
This mode attempts to boot the device from the SD card, if there is no valid operating system, the device will start from the internal operating system.
- 2 If the operating system is invalid or does not exist on the SD card (COM LED blinks red or orange), the internal operating system can be started by pressing the button.

1.6

File system

The file system on the device has a structure similar to the following:



In the above example, an [ActiveSync connection](#) was created and the file system was then viewed afterwards from the PC using Microsoft Windows Explorer.

The file system on the device essentially contains the following important directories:

InternalStorage	Content of the internal memory
StorageCard	Content of the PCMCIA, Compact Flash or SD Flash card
StorageCard2	Content of the second PCMCIA or Compact Flash or SD Flash card, if present
Windows	Directory with the system files

Note:

All directories apart from «InternalStorage», «StorageCard» and «StorageCard2» are located in the working memory (RAM) and are re-created with every device start. In other words, all files that are not located in these memories are lost when the device is powered down.

The file system can also be viewed and edited directly on the device. For this start the «My Computer» («My Device») icon on the Desktop or in the Start menu choose «Start – Programs – Windows Explorer».



1.6.1

Information on the File System in InternalStorage

The file system in InternalStorage is located in a NAND-Flash. As NAND-Flash exhibits different physical characteristic to a hard drive, the following points are to be noted:

- Permanent writes of small amounts of data (a few bytes) in files should be avoided.
- Permanent reading and deletion of files should be avoided. NAND-Flash tolerates a limited number of write/delete cycles.

To ameliorate NAND-Flash- unfriendly accesses special mechanisms are incorporated (wear leveling), in order to improve NAND-Flash life-expectancy.

1.7

Shortcuts

Shortcuts can be created on the Desktop for easier operation. As the **MICRO PANEL** does not have a persistent registry, (i.e. the registry is set according to the CE Kernel with every start), the shortcuts must be restored with every start. See also chapter [Startup behavior](#).

Shortcut or link files can be created with the SHORTCUT program. The program can be called in the AUTOEXEC.BAT file -- see also chapter [Autoexec.bat](#).

The **SHORTCUT** program supports the call with the following command line parameters:

Parameter	Description
-p «Program»	Selection of the program for which a shortcut file is created (with or without directory)
-l «Shortcut»	Optional - File name of the LNK file (with or without directory) If no file name is given, the LNK file created takes on the name of the program it is meant to call. The LNK file is created in the default directory «\windows\desktop», i.e. the icons are visible on the Desktop. The file name serves at the same time as name of the icon on the Desktop.
-q	The program is executed in the background without a window.

Examples of the call within the AUTOEXEC.BAT file:

START shortcut -p FtpSvr.exe

This creates a shortcut file (FtpSvr.lnk) for the FTP server which is copied to the Desktop directory. In other words, the shortcut is visible on the Desktop.

START shortcut -p CeRemoteSvr.exe -l \storagecard\remote.lnk

This is used to create a shortcut file (remote.lnk) for the remote server, which is copied to the «\storagecard\remote.lnk» directory.

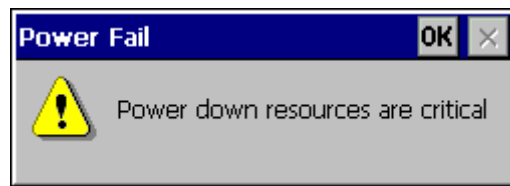
The LNK files created using the SHORTCUT program are ASCII files with the following format:

0#«File with path»

1.8

Power supply interruption

In the event of a power supply failure, the NVSRAM (non-volatile SRAM) ensures that the data is saved. If the following dialog appears when the device is started, this means that the data in the NVSRAM could no longer be saved. This either indicates a hardware fault or the fact that a serious fault has occurred in Windows CE, which prevented saving. If this message is present, please contact your **MICRO PANEL** distributor.



Note:
This only applies to devices that have an NVSRAM memory (see Device Description of the MICRO PANEL).

2 Ethernet

The Ethernet interface is implemented in compliance with the IEEE 802.3 (10/100BASE-T) standard. The network is implemented with shielded twisted-pair cables and shielded RJ45 plugs. The devices networked with the **MICRO PANEL** must also be provided with shielded connections. The twisted-pair cable selected for use in Ethernet networks must comply with the cable specifications with regard to cable length and transmission speed. See also specification to EIA/TIA 568 TSB-36.

The cables of the Ethernet interface must be laid separately from the low-voltage cables.

2.1 Access to PC

Network name

Each panel is given a unique network name in order to avoid conflicts within a network. When the panel is started, the name is displayed together with its relevant IP address. A device name must only occur once in the same network.

Caution:
With Windows CE it is only possible to access external resources (drives/directories/printers) via names and not via IP addresses. Further information is provided in chapters [Name resolution in Windows networks](#), [Network access procedure](#) and [Network test](#).

User name / Password / Domain:

The MICRO PANEL has the following default settings:

User name:	MI_PANEL
Password:	No password defined
Domain:	No domain defined

The settings can be modified with the [Owner](#) program.

Note:
The user name and password must always be given to access a PC!

Note:
NTLM authentication in Windows CE 3.0 does not work under Windows Vista and Windows 7

Examples of external access:

Direct access to the computer resources is possible or via the local directory \Network\«EnableName». All computer resources associated with the **net use** command are listed in the directory \NETWORK of the **MICRO PANEL**. The use of the **net use** command is described in chapter [Network access procedure](#).

Direct access to computer resource:	Examples:
\\«Network name of the computer»\«Printer name»	\\PC-001\ColorPrinter
\\«Network name of the computer»\«Directory»	\\PC-001\transfer
Access via «connected» resources	
\Network\«mapped printer name»	\Network\HP6940
\Network\«mapped directory name»	\Network\pc001

The name of the computer must be specified under «Network name of the computer». IP addresses are not supported here. Enter the name of the enabled printer under «Printer name».

2.1.1

Name resolution in Windows networks

The name resolution is absolutely necessary in order to access enabled resources (drives, directories, printers) of a computer with the Windows operating system. Access via IP addresses is not supported by Windows CE.

The name resolution under Windows CE is executed via the NetBios name (UDP, Port 137) service. The following must be observed on the computer:

- The options «File and Printer Sharing» and «Internet Protocol (TCP/IP)» in the network settings must be activated.
- If a domain controller is not used: The option «Enable NetBIOS over TCP/IP» must be selected. This setting is carried out in the Network Settings «Internet Protocol TCP/IP – Properties – Advanced – WINS»: Network Settings – Internet Protocol TCP/IP – Properties – Advanced – WINS: Option «Enable NetBIOS over TCP/IP»
- The following settings must be set in the local security policy. These settings are located at Control Panel – Administrative Tools – Local Security Policy – Local Policies – Security Options:

Option:	Setting:
Accounts: Local account use of blank passwords. From Windows XP blank passwords are not permissible.	DISABLE
Network security: LAN Manager authentication level	Send LM and NTLM responses

- The relevant rules for user name and password must be observed. When using a domain controller, consult your network administrator. On desktop PCs, these rules are found under Control Panel – Administrative Tools – Local Security Policy – Account Policies – Password Policy.
- In a network without a domain controller, the service «Computer Browser» must be started to support correct name resolution. See à Control Panel – Administrative Tools – Computer Management – Services and Applications – Services. The «Computer browser» setting must be activated.
- When using several network cards, the used network card must be installed at the first position in the order of all network cards. Network cards of virtual PCs such as VMWare or VirtualPC must be deactivated under certain circumstances.

2.1.2

Network access procedure

- Does [.Ping](#) function from the Windows computer to the **MICRO PANEL**? See also the chapter [.Network test](#)
- Does [.Ping](#) function from the **MICRO PANEL** to the Windows computer?
- Set up a user name and password on the computer. Disable the option «Change ID on the next start».
- Enable the required resources on the computer (drives/directories/printers).
- Set the user name and the password via [Owner \(Owner\)](#) on the **MICRO PANEL**.
- Open a command line window on the **MICRO PANEL**: Test the network access with the **net view** command. For example, «net view \\hostname» will display the enabled resources of the computer with the network name «hostname».
- The **net use** command connects or disconnects the **MICRO PANEL** with an enabled resource. The connection of resources is not absolutely necessary, but is nevertheless recommended. This has the advantage that access from the application is always the same, irrespective of the computer, directory or printer name. The command syntax is as follows:
net use «locale name» \\«computer name»\«enable name»
«Computer name» is the network name of the computer, «enable name» is the enabled resource and «local name» is the NETWORK subdirectory on the **MICRO PANEL**. After executing the command, the resource is accessed using \network\«local name». When no parameters are given, **net use** displays a list of the network connections.

Note:
Further information on the MS-DOS commands «net view» and «net use» are provided in PC manuals. Calling the command with the parameter «-?» will display the relevant command syntax.

2.2

Access to MICRO PANEL

The following options are available for accessing the **MICRO PANEL**:

- [FTP Server](#)
- [ActiveSync connection](#)
- [Remote server](#)

Note:

Directory enables can be used to make access to an external server/PC possible from the MICRO PANEL. Access from the server/PC to the MICRO PANEL is possible with Windows CE 5.0 (see File server).

2.3

Name resolution (CEHosts)

This command line program is used for the name resolution in TCP/IP networks. NetBIOS names are resolved to the IP addresses. The devices/stations are always addressed in a TCP/IP network using IP addresses. The name resolution is used to enable devices in the network to be addressed also with a name. The command line call is as follows:

```
cehosts.exe -a «IP address» -n «Name»
```

For example, the call «cehosts.exe -a **192.168.1.1** -n **MY_PC**» resolves the name «MY_PC» to the IP address 192.168.1.1. See also chapter [Access to PC](#) and [Printing via Ethernet](#).

Parameter -q can also be entered in order to suppress the outputs of the program.

Note:

These settings are not retained after the device is restarted. The name resolution function is not active with CEHosts when accessing enabled drives or printers on PCs with the Windows operating system, see also chapter [Access to PC](#).

2.4 Connecting with XC-150

2.4.1 General Information

Delivery state

The XC-150 is delivered with the following network configuration:

IP address: 192.168.1.1
Subnet mask: 255.255.255.0

CTRL button

If the CTRL button is pressed while switching on the device (until the SF LED is solid green), then the XC-150 applies an IP address from DHCP.

When thereafter the CTRL button is hold down for 5 seconds (until the SF LED flashes green), then the XC-150 temporarily assigned the IP address 192.168.1.1.

Remote-Client

The program Remote Client (see chapter 7.5) is part of the installation of XSoft-CoDeSys and Galileo and is found after the installation of one of that software in the start menu of the computer.

Firewall

The detect-function of the Remote Client is based on the DHCP-protocol and uses the ports 67 and 68 (UDP). When a firewall blocks these ports, the detect-function will not work.

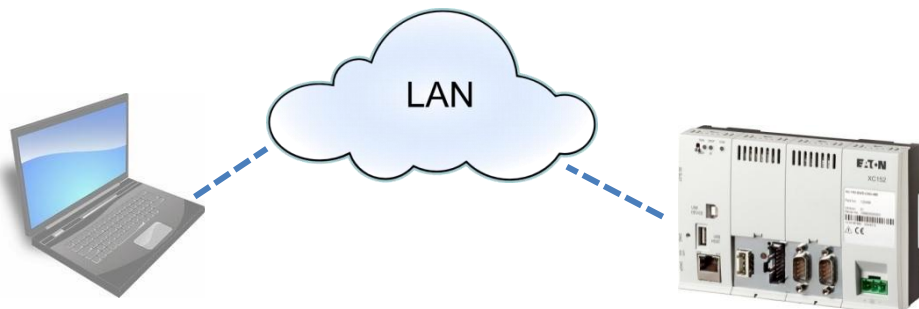
The Remote Client needs to be classified as trusted, when there is an existing firewall.

Network settings

If the first access on the XC-150 has worked, it is recommended to configure the network settings of the device. For more information how to do that, see chapter 4.8 Network Setting (Network).

2.4.2 Connect to the XC-150

Condition: There must be no firewall present which blocks the DHCP ports.



- Start Remote-Client on the computer and click detect
- Power on the XC-150 with pressed CTRL-button (hold button until the SF LED is solid green)
- Information about the found XC-150 device will be shown:
 - variant a: A DHCP-Server is on the LAN and has assigned an IP address to the XC150

2 Ethernet

2.4 Connecting with XC-150

- variant b: A proposal of an IP address is shown, which has to be completed. After a click on OK this IP address will be assigned to the XC-150.
- Click OK to connect
- Hint: The now assigned IP address is only temporary.
 - See chapter 4.8 Network Setting (Network).

Crossed network cable between computer and XC-150

Condition: IP address of the computer needs to be able to change



- Set network settings on the computer to:
 - IP address: 192.168.1.2, Subnet mask: 255.255.255.0
- Power on XC-150, wait until COM-LED is dark.
- Start Remote-Client on the computer and connect with the XC-150 (Delivery state: 192.168.1.1)

Set the IP address with a SD card

Condition: A computer with an SD card reader

Two files needs to be generated and stored on the root directory on the SD card.

- File "autolaunch.inf" with the following content:

```
[autolaunch]
open = SetIpAddress.bat
RunOnBoot = 1
```
- File "SetIpAddress.bat" with the following content:

```
ipsetup.exe -a 172.16.10.20 -r
```

When the SD card is inserted to the XC-150, after a reboot the device will have the permanent IP address 172.16.10.20.

For more information see chapter 7.16 AutoLaunch.

3 Printing

3.1 General

Different interfaces are provided for use as a printer terminal. These are the Ethernet interface, the parallel interface and the serial interface.

Windows CE currently contains the following printer drivers:

Printer types *	Printer driver
PCL Deskjet	pcl.dll
PCL Laser	
HP Laserjet	emprint.dll
HP Color Laserjet	
HP Business Inkjet	
HP Deskjet 9xx	
HP Deskjet 61xx	
HP Photosmart 7xxx	
HP Photosmart 1xx	

* These are printer names which are used for printer selection.

3.2

Printing via Ethernet

Printers can be connected to the Ethernet interface of the **MICRO PANEL**. The printer can either be addressed via an enabled printer of a Windows PC or directly addressed via the RAW or LPR protocols.

Notes:

Only printers that support the PCL protocol can be connected. PCL is a language developed by HP which, however, is also supported by other printer manufacturers.

If the following registry entry is set (not equal 0), the printer message «Print job ... on queue ... has finished printing.» will not be displayed:

```
[HKEY_LOCAL_MACHINE\Printers]  
"NoNotifyWhenPrinted" = dword:1
```

Access to enabled printer of a Windows computer

All printouts are carried out via the selected Windows PC. The procedure and the necessary settings and syntax required for printer selection are described in the chapter [Access to PC](#).

RAW or LPR protocol

If the printer or printer server supports printing using the RAW or LPR protocols, the **MICRO PANEL** can activate the printer directly. This makes it unnecessary to have a computer with the Windows operating system in the network.

Printer selection:	Examples:
RAW: «IP address or network name»:«port number»	RAW:192.168.1.1
LPR: «IP address or network name»/«port name»	LPR:192.168.1.1/P2

Select under «IP Address or Network Name» the appropriate IP address or network name of the printer or printer server (see also chapter [Name resolution](#)). The port number or port name entry is optional, and port number 9100 or port name P1 is used if no entry is made. Refer here to the information provided with your printer or printer server.

3.3

Parallel interface

Some **MICRO PANEL** devices are provided with a parallel printer interface which can be used for connecting the printer.

Note:

Only printers that support the PCL protocol can currently be connected. PCL is a language developed by HP which, however, is also supported by other printer manufacturers.

3.4

USB interface

Some **MICRO PANEL** devices are provided with an usb printer interface which can be used for connecting the printer.

Note:

Only printers that support the PCL protocol can currently be connected. PCL is a language developed by HP which, however, is also supported by other printer manufacturers.

Note:

This functionality only applies to XV100 and XC150 devices with a USB-host connection.

3.5

Serial Interface

The serial port can also be used for connecting the printer. Two different modes are always available for printing via the serial port.

Printing using Windows driver

Connecting a printer to the serial interface in conjunction with a standard Windows CE driver has the same requirements as for the parallel interface.

Note:

Only printers that support the PCL protocol can currently be connected. PCL is a language developed by HP which, however, is also supported by other printer manufacturers.

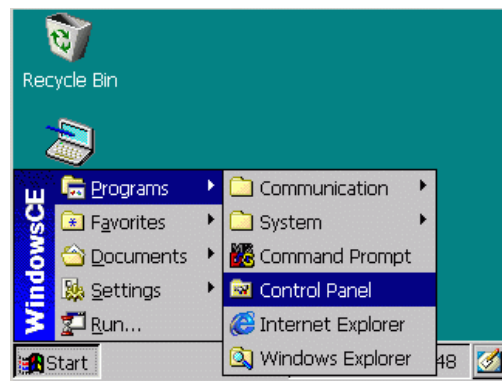
Printing using ESC sequences

The GALILEO Runtime program also supports printing by means of ESC sequences. This makes it possible to connect a printer without the need for a Windows CE driver. However, the project designer must create a «kind» of printer driver (PRV file) in which the necessary commands are defined with ESC sequences. Further information is provided in the GALILEO documentation.

4 System Settings

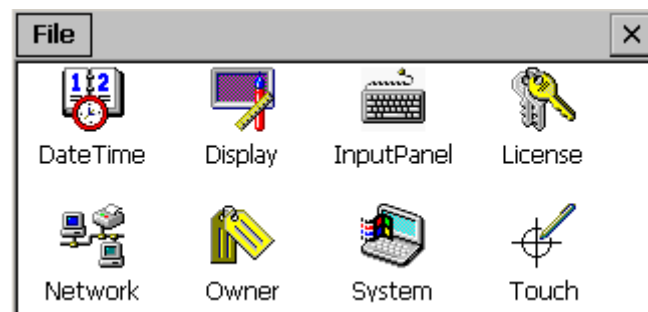
4.1 General

All adjustable system settings can be accessed under «Start» → «Programs» → «Control Panel» or «Start» → «Settings» → «Control Panel». If the application is started with the command line parameter `-fullscreen`, the full screen resolution is used, i.e. the taskbar is not visible. See also chapter [Command line parameters](#).



The «Control Panel» contains the following programs:

- [Date Time \(DateTime\)](#)
- [Display \(Display\)](#)
- [Input Panel \(InputPanel\)](#)
- [Network \(Network\)](#)
- [Owner \(Owner\)](#)
- [System \(System\)](#)
- [Touch \(Touch\)](#) -- only required for devices with resistive touch technology
- [Keyboard \(Keyboard\)](#) -- only for WindowsCE 5.0
- [License \(License\)](#)
- [BootDeviceSetup \(BootDevice\)](#) -- only XV100
- [StorageManager \(StorageManager\)](#) -- only XV100



The settings for date/time, display and touch are already factory set for optimum performance. The network settings, however, must always be adapted to the network in place.

4.2 Command Line Parameters

4.2.1 XV400

The command line call of the programs with the suffix .CPL is as follows:

Parameter	Description
-fullscreen	The program uses the full screen, i.e. the taskbar is not visible. This function is only active if the parameter -cpl is not used.
-cpl «CPL program»	Selection of the .CPL program
Other parameters	The other parameters depend on the CPL program selected.

Examples:	Call:
Set number of colors to 16 bits	"control panel" -cpl display.cpl -colors 16
Rotate screen orientation 90°	"control panel" -cpl display.cpl -rotate 90
Set backlight to 60%	"control panel" -cpl display.cpl -back 60

Note:
The supported command line parameters should be taken from the corresponding CPL program (e.g. [Display](#)). The "control panel" entry must always be placed in inverted commas!

4.2.2 XV100

The individual programs of the Control Panel can be called directly with the relevant command line parameters.

Examples:	Call:
Set number of colors to 16 bits	display.exe -colors 16
Rotate screen orientation 90°	display.exe -rotate 90
Set backlight to 60%	display.exe -back 60

Note:
The supported command line parameters should be taken from the corresponding CPL program (e.g. [Display.exe](#)).

4.3

Expanding the Control Panel

Windows CE 5.0 allows you to add further programs to the Control Panel. This requires an entry to be made in the registry which defines the path on which the additional programs are stored.

Example:

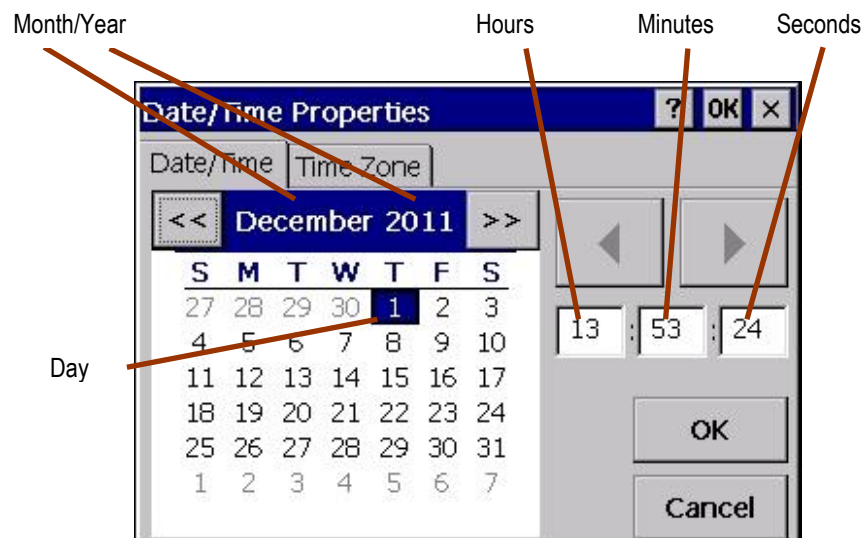
```
[HKEY_LOCAL_MACHINE\SOFTWARE\Micro Innovation\UserCpl]  
"userCplDir"="\StorageCard\cpl"
```

After this entry is added to the registry, all *.exe files in the directory \StorageCard\cpl are also displayed in the Control Panel.

4.4 Date / Time and Time Zone setting (DateTime)

4.4 Date / Time and Time Zone setting (DateTime)

4.4.1 DateTime



You can change the month and year using the two buttons stated (<< and >>). You can select the day directly by touching the day of the month. Hours, minutes and seconds are changed after they are selected with the buttons shown above. Hours must be entered in 24 hour format. Touching «OK» will cause the current settings in the clock module to be saved and retained, even in the event of a restart.

Note:

The daylight saving time change is NOT automatic. See also chapter 4.4.4. The year number cannot be set to a lower value than the current year.

4.4 Date / Time and Time Zone setting (DateTime)

4.4.2

Time Zone



The dialog shown can also be used to set the required time zone. The «GMT» time zone is set by default, i.e. without a time shift setting. The set time zone is also retained after a restart.

4.4.3

Command Line Parameters

The [command line call](#) is described in chapter 4.1. The following parameters are supported:

Parameter	Description
-id [Time Zone ID]	Set time zone according to the Time Zone ID, e.g. -id 6912 The Date/Time dialog of the Time Zone tab shows the time zone IDE of the selected time zone.
-q	Supresses program output.

4.4.4

Daylight Saving Time

DaylightTime.exe is used for the automatic daylight savings time (DST) change. The program must be started with every system start, and runs invisibly in the background.

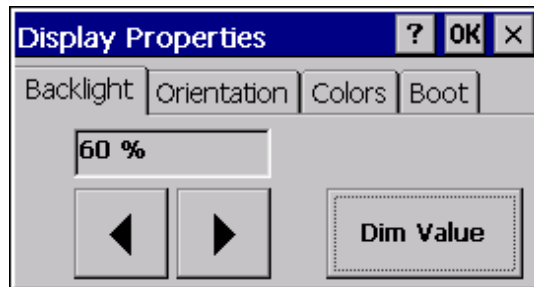
Example call in autoexec.bat:

```
START DaylightTime.exe -on
```

Note:
When using DaylightTime.exe time jumps can occur. Due to this it is possible that undesirable behavior can occur in other applications.

4.5 Screen Setting (Display)

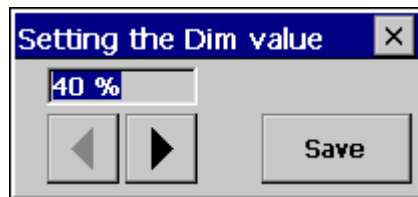
4.5.1 Backlight



This program can be used to set the backlight to the required value. The setting made is stored as persistent data, i.e. it is retained even after a restart.

The lower values such as 40 and 60 % are «stand by» values and are not therefore intended for normal operation. The reduction of the backlight increases the lifespan of the backlight (tubes).

Note:
The supported percentage values depend on the device concerned.



Dim Value

This is the dialog to select the appropriate dim value of the backlight. An activation of the screen saver reduces the backlight to this dim value. The screen saver is part of the HMI program.

Use the arrow buttons to set the required dim value and touch **Save** to store the value as persistent data.

4.5.2 Contrast



This program is used for setting the screen contrast. The «Middle» setting is the factory setting. Touch «Save» to save the selected setting as persistent data, i.e. the value is retained even after a restart.

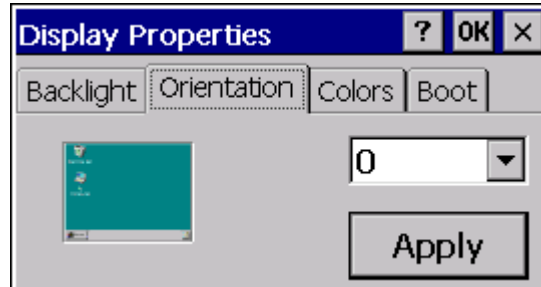
Note:
This setting is not required for devices with an active display (TFT technology) and is therefore not available.

4 System Settings

4.5 Screen Setting (Display)

4.5.3

Orientation

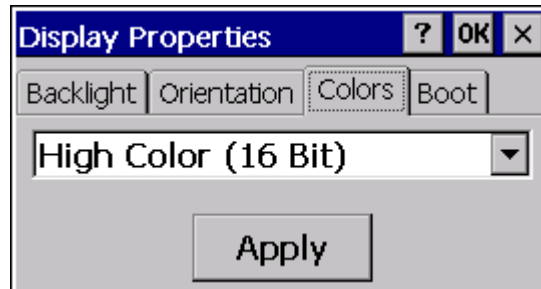


Display orientation can be set with the «0» (default setting) or «90» settings. The display is rotated in a clockwise direction. The «90» setting should be selected for vertical mounting. The picture on the left of the dialog shows the orientation set. The setting is not transferred until after a restart.

Note:
This function is not supported by all MICRO PANEL devices.

4.5.4

Colors

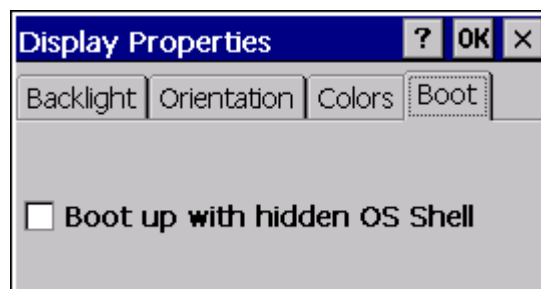


This setting enables the number of screen colors to be selected. Different color depths can be selected. The setting is not transferred until after a restart.

Note:
This function is not supported by all MICRO PANEL devices. If this function is not available, the device operates with 256 colors.

4.5.5

Boot option (startup with hidden OS shell)



This setting can be used to modify the startup behavior of the device. If this option is enabled, either the [Autoexec.bmp](#) bitmap or a black screen will be displayed during startup instead of the Windows CE interface. The execution of the [Autoexec.bat](#) file is also not visible.

This setting can also be set via the [Command line parameter](#) «shell hide» or «shell show».

4 System Settings

4.5 Screen Setting (Display)

The [Autoexec.bmp](#) bitmap file must be stored in the root directory of the BootDevice. The device returns to normal display if either a program (e.g. HMI Runtime GRS) «switches» the display or after around 14 seconds have elapsed. The default delay time of 14 seconds can be overwritten using the following registry entry (enter the number of seconds in HEX, max. 60 seconds):

```
[HKEY_LOCAL_MACHINE\Init]
"StartupDisplayDelay"=dword:0014           ;e.g. 20 seconds
```

Note:
This function is not active if the [CTRL/DOWNLOAD button](#) is pressed during the startup!

4.5.6

Command Line Parameters

The [Command line call](#) is described in chapter 4.1. All parameters can be used as required, although only the settings of the used parameters can be changed. The following parameters are supported:

Parameter	Description
-back [% value]	Set backlight, e.g. -back 60 The supported percentage values depend on the device concerned. The entered percentage value is rounded up to the next higher value supported.
-backSet	Set backlight to „back-value“.
-backOff	Turn backlight off. (Warning, no display!)
-dim [% value]	Sets the reduction value of the backlight used by the screen saver, e.g. – dim 60. The supported percentage values depend on the device concerned. The lowest brightness level is used as a default reduction value.
-dimSet	Set backlight to „dim-value“.
-rotate 0 -rotate 90	Sets the display orientation to 0° or 90°
-colors 8 -colors 16	Sets the color depth in number of bits
-shell show -shell hide	Either show or hide the operating system environment during startup.
-bootRemove	Hides the start-up picture defined in 4.4.5 and switches to normal display.
-taskbar	Displays the WinCE taskbar.
-fullArea 0 -fullArea 1	0: Sets the height of the Work area of Windows CE to the display height minus the height of the taskbar. 1: Sets the Work area of Windows CE to the display height.
-virtDisplaySize X	Change the virtual display size for XC-devices. Allowed values for X: 35 320 x 240

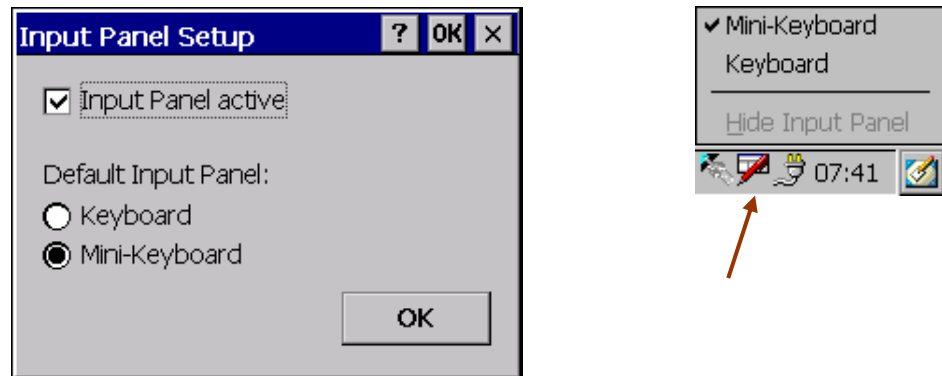
4 System Settings

4.5 Screen Setting (Display)

	57	640 x 480
	70	800 x 480
	0	original hardware setting
-r	Device restarts immediately if the settings « Number of colors » or « Orientation » are modified.	
-s	Shows the current state.	
-q	Suppresses program output.	

4.6

Software Input Panel



A range of different software keyboards are provided for entering characters on the device. The «**Input Panel active**» setting can be used to activate or deactivate the software keyboard. The option is deactivated by default. A change of this setting requires the system to be restarted.

When the software keyboard is activated, the icon with the sheet and the red pen are contained in the taskbar (see figure at top right). Double touching the icon makes the keyboard visible or invisible. A single touch shows the menu which is contained in the figure shown above. The keyboard type and the visibility can be toggled in the «**Hide Input Panel**» menu.

Note:
Depending on the application, the keyboard appears automatically as soon as an editable field is selected.

The standard keyboard can be selected at «**Default Input Panel**». This setting is also retained after a restart. The following keyboard types are available.

4.6.1

Keyboard

Input Panel													
`	1	2	3	4	5	6	7	8	9	0	-	=	<--
Tab	q	w	e	r	t	y	u	i	o	p	[]	\
Caps	a	s	d	f	g	h	j	k	l	;	'	Enter	
Shift	z	x	c	v	b	n	m	,	.	/	up		pgup
Ctrl	àèù	Alt							del	lt	dn	rt	pgdn

4.6.2

Mini-Keyboard

Input Panel			
Del	ABC	DEF	<--
GHI	JKL	MNO	Caps
PQRS	TUV	WXYZ	Num
«	—	»	Enter

The «Caps», «Num» and «Sym» buttons can be used to toggle between the different characters (normal characters, numbers and special characters). Each button is assigned with several characters. You operate the buttons in the same way as on a mobile phone – touch once to transfer the first character, twice to transfer the second etc.

4.6.3

Change the button size on the keyboard:

The size of the buttons is set with the settings of KeyButtonsSize57 or KeyButtonSize. The maximum size depends on the display size. With small displays, the value should not be too big as the input window may be overlaid with the keyboard.

The smallest value for the buttons should not be less than 0x16. Smaller settings make the letters illegible.

Registration entries under

[HKEY_CLASSES_ROOT\CLSID\{4E1C5F95-9342-4E03-91A6-796D7CC3AB81}\Keys]:

Entry	Type	Description
KeyButtonSize57	dword	Setting of the button size for displays with a QVGA resolution Default value: 0x16
KeyButtonSize	dword	Setting of the button size for displays with a higher resolution than QVGA. Default value: 0x20

4.6.4

Change the button size on the mini-keyboard:

The size of the buttons is set with the settings of KeyButtonsSize57 or KeyButtonSize. The maximum size depends on the display size. With small displays, the value should not be too big as the input window may be overlaid with the keyboard.

The smallest value for the buttons should not be less than 0x22. Smaller settings make the letters illegible.

Registration entries under

[HKEY_CLASSES_ROOT\CLSID\{af0dcded-f61f-11da-95e7-00e08161165f}\Keys]:

Entry	Type	Description
KeyButtonSize57	dword	Setting of the button size for 5.7" displays (QVGA) Default value: 0x28
KeyButtonSize	dword	Setting of the button size for displays with a higher resolution than QVGA. Default value: 0x32

4.6.5

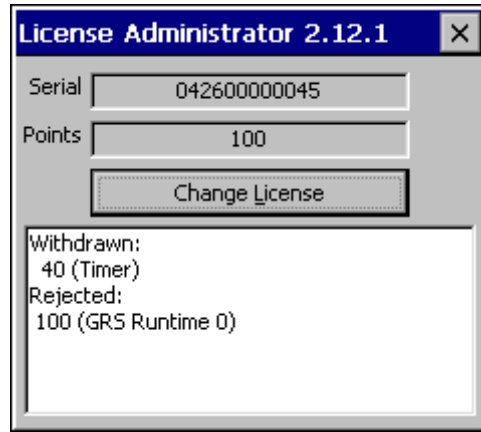
Setting Example

```
[HKEY_CLASSES_ROOT\CLSID\{4E1C5F95-9342-4E03-91A6-796D7CC3AB81}\Keys]  
"KeyButtonSize57"=dword:00000020  
"KeyButtonSize"=dword:00000029
```

```
[HKEY_CLASSES_ROOT\CLSID\{af0dcdded-f61f-11da-95e7-00e08161165f}\Keys]  
"KeyButtonSize57"=dword:00000030  
"KeyButtonSize"=dword:00000040
```

Caution:
The values in the registry file are HEX numbers!

4.7 License Administrator (License)



The license administrator is used for increasing the number of license points on the device.

Serial

Shows the serial number of the device that is printed on the device nameplate.

Points

This field contains the current number of installed license points for the device.

Change License

Touching this button will activate a keypad with which the activation code can be entered manually. See also the chapter [Relicensing Procedure](#).

List box

This field lists applications and drivers that are currently started and which require license points. The designations **Withdrawn** and **Rejected** have the following meanings:

Withdrawn: This number of license points were assigned to the applications listed.

Rejected: The system does not have enough license points for these applications.

The total of all license points under **Withdrawn** and **Rejected** produces the total number of points required.

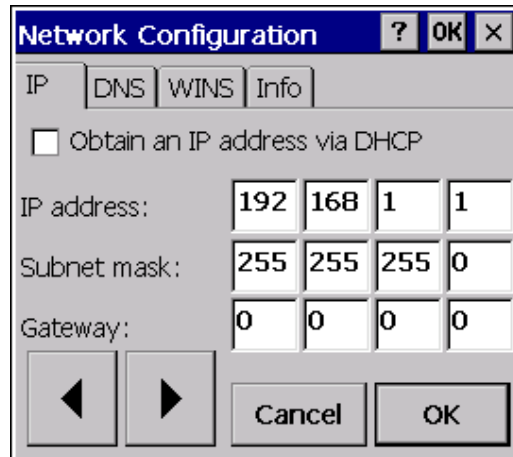
Further information on licensing is provided in the chapter [Licensing](#).

Note:
After an application has been shut down, license points that have been assigned to it remain reserved until the next time the device is restarted. The number of license points cannot be reduced.

4.8 Network Setting (Network)

Note:
Modifications to the network settings of XV400 devices are not activated until the device is restarted (see also documentation «Network in brief»). A restart is not necessary for XV100 devices.

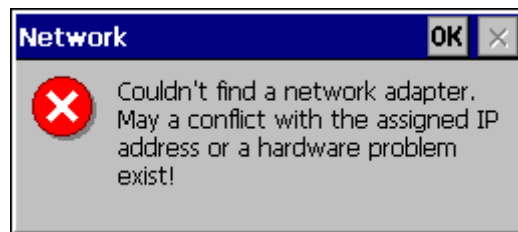
4.8.1 IP address



It is always possible for the device to obtain an IP address (network address) via a DHCP server on startup «Obtain an IP address via DHCP». However, for the device to have a unique ID, you should select «Specify an IP address».

To do this, make sure that you set at «IP address» an address that is still free in your network. Select the «Subnet mask» according to your network configuration (see Network properties - TCP/IP settings on the working computer).

Note:
If the following error message appears when starting the network settings, this means that there is a problem with the network adapter. It may mean that the set network address is already being used by another network station.



Gateway

The setting (address) for the «**Gateway**» is only required if you wish the device to access the Internet via a router. Ask your network administrator for this or set the address that is also set in your working computer. Set 0.0.0.0 if no gateway is required or if this is not known.

IP classes

The private IP address ranges of classes A, B and C are listed in the following table.

	Private IP address ranges	Standard subnet mask
Class A network	10.0.0.0 to 10.255.255.255	255.0.0.0
Class B network	172.16.0.0 to 172.31.255.255	255.255.0.0
Class C network	192.168.0.0 to 192.168.255.255	255.255.255.0

Note:
All of the above listed address ranges (compliant with RFC 1918) are not available on the Internet, i.e. they are reserved for private use. If you do not have an official IP address, only use these private address ranges!

Notes on the subnet mask

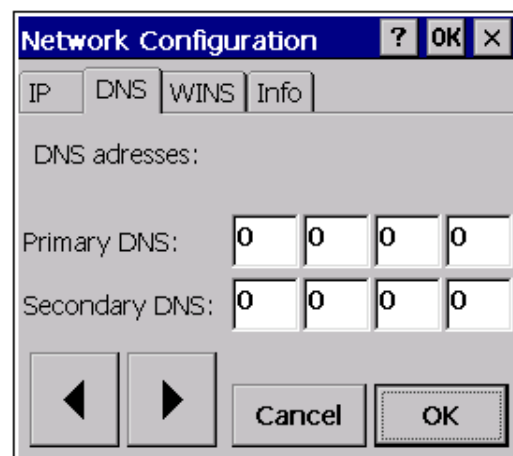
The program only allows valid subnet masks. A valid subnet mask must consist of a contiguous series of 1 bits followed by 0 bits. At least the MSB (Bit 32) must be 1 and LSB (Bit 0) 0 in order for the mask to be valid. See also the previous chapter **IP Classes**.

Examples of invalid subnet masks:	Binary format:
255.255.255.255	1111 1111.1111 1111. 1111 1111.1111 1111
0.0.0.0	0000 0000.0000 0000 0000.0000 0000 0000
255.255.15.0	1111 1111.1111 1111.0000 1111.0000 0000

*MSB: Far left in the table above
*LSB: Far right bit

4.8.2

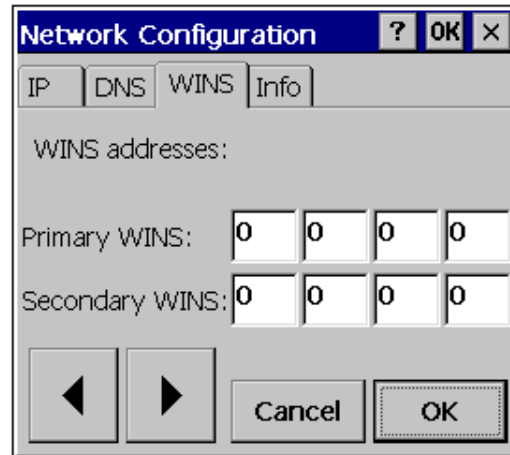
DNS



Ask your network administrator about DNS or set the addresses 0.0.0.0 for «**Primary DNS**» and «**Secondary DNS**».

4.8.3

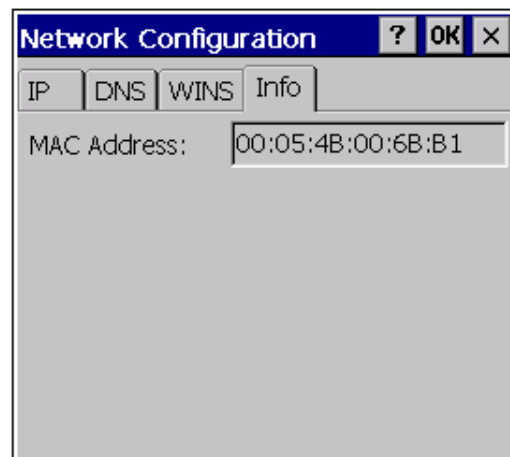
WINS



Ask your network administrator about WINS or set the addresses 0.0.0.0 for «Primary WINS» and «Secondary WINS».

4.8.4

Info



The MAC address of the HMI device is displayed in the Info page. This is a manufacturer-specific and unique Ethernet connection number of the device.

Note:
The Info tab is not available for XV100 devices. The MAC address can be viewed by double touching the icon in the network connection in the taskbar.

4.8.5

Command Line Parameters

The network settings can either be made using the «IpSetup.exe» program or as described in the chapter [Command line call](#). The supported parameters are listed in the following table. All parameters can be used as required, although only the settings of the used parameters can be changed.

-a [IP address]	IP address
-a off	Delete IP address or set to 0.0.0.0. DHCP is activated automatically if the address is set to 0.0.0.0.
-m [Subnet mask]	Subnet mask
-m std	Subnet mask is set according to the class of the set IP address (see table of IP classes in chapter IP Address)
-g [Gateway]	Sets the gateway address
-g off	Deletes the gateway address
-d [DNS]	First DNS address
-d2 [DNS]	Second DNS address
-d off	Deletes the DNS addresses
-w [WINS]	First WINS address
-w2 [WINS]	Second WINS address
-w off	Deletes the WINS addresses
-speed auto, 10, 100	Sets the network speed to 10M, 100M or automatic. The default setting is «auto», which causes the device to determine the network speed automatically. If a fixed speed is set, the «duplex» setting must also be set.
-duplex auto, half, full	Sets the «Duplex» mode to «half», «full» or automatic. The default setting is «auto». The setting must always be activated together with «speed».
-r	Device is restarted immediately if the settings are modified.
-oX -a [IP Address]	Changes the IP address of the onboard adaptor. (e.g. ONBOARD1). This option can be combined with all the options listed above.
-oX	In the absence of other options the input screen for the onboard adaptor (e.g. ONBOARD1) will be opened.
-c	If this option is used, the network settings do not apply to the integrated Ethernet interface but to an NE2000 compatible network card in the Compact Flash slot.
-s	Status display of the current settings
-q	Suppresses program output
-?	Shows the possible parameters on screen

4 System Settings

4.8 Network Setting (Network)

Note:

The parameters `-c`, `-speed` and `-duplex` are not supported by XV100 devices. The ethernet interface is always set to «auto».

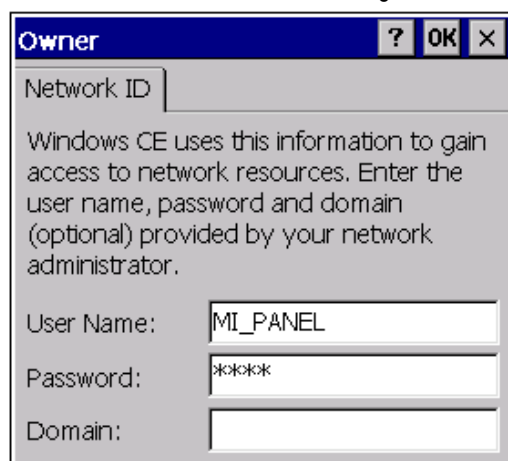
For example, the following line inside the «Autoexec.bat» file sets the IP address:

```
START ipsetup.exe -a 192.168.1.1 -m 255.255.0.0 -g off -w off -d off
```

4.9

Owner

This program is used for specifying the user, password and domain for logging into an external Windows server/PC. The default setting is the user name MI_PANEL and no password.



The screenshot shows a dialog box titled "Owner". At the top right of the title bar are buttons for help (?), OK, and close (X). The main area of the dialog contains a "Network ID" label followed by an empty text box. Below this is a paragraph of text: "Windows CE uses this information to gain access to network resources. Enter the user name, password and domain (optional) provided by your network administrator." Underneath the text are three input fields: "User Name:" with the text "MI_PANEL", "Password:" with "*****", and "Domain:" with an empty box.

Specific operations must be carried out in order for the selected settings to be retained after a restart. If the entries are acknowledged with OK, the current settings can be saved inside the registry file \NETWORK.REG. The content of the REG file must be inserted in the [Autoexec.reg](#) file so that the settings are reset after a restart.

See also chapter [Autoexec.reg](#), [File .REG](#) and [Ethernet](#)

Note:

These entries are only required if the device is to be connected to a Windows Server/PC with the Windows operating system. This requires the appropriate user rights, directory or printer authorizations on the server/PC.

4.10

Net Setup (Netsetup)

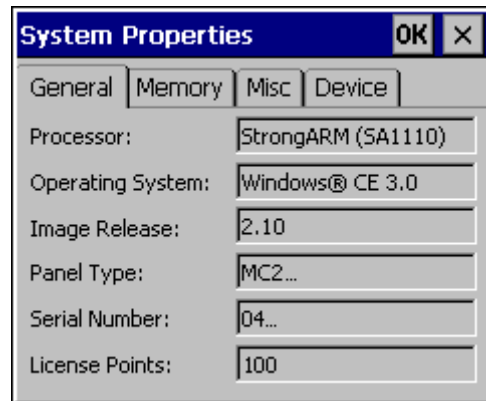
The network name can be set using the Netsetup.exe program. The command line call is as follows:

Parameter	Description
-n [Name]	Network name
-default	Sets the default network name consisting of 'MI_' and the last 6 digits of the MAC address
-r	Device is restarted immediately if the settings are modified.
-q	Suppresses program output
-? or -h	Display of the possible parameters

The currently set network name is displayed during the startup (see [Startup behavior](#)) and inside the [System properties](#) on the [Device](#) tab.

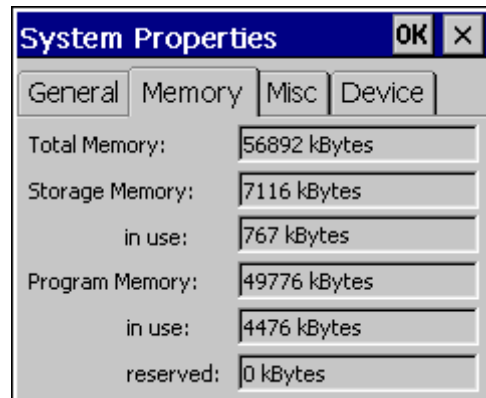
4.11 System Properties (System)

4.11.1 General



The «General» tab contains important information about the device and the installed Windows CE version. «Image Release» shows the version of the CE Image. See also the chapter [Licensing](#).

4.11.2 Memory



The «Memory» tab contains information on the available «RAM» working memory.

Total Memory:

Contains the total memory size minus the memory reserved for the Windows CE Image (i.e. CE Kernel).

Storage Memory:

Shows the memory reserved for the file system (without PCMCIA or CF cards) on the device. «in use» shows the memory currently in use within the «Storage Memory».

Program Memory:

Contains the available memory reserved for the program memory. «in use» shows the memory in use and «reserved» shows the memory reserved.

Note:

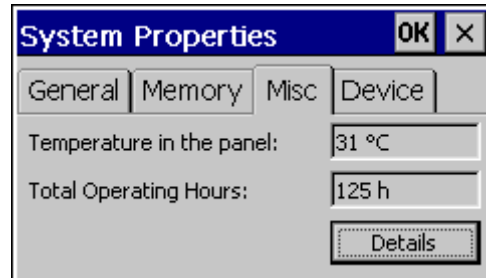
The above values may vary according to the device configuration in place.

4 System Settings

4.11 System Properties (System)

4.11.3

MISC



The «Misc» tab displays the current temperature on the device and the operating hours.

The screenshot shows the 'Temperature Histogram' dialog box, which displays a table of operating hours broken down into individual temperature ranges.

Range [°C]	Hours
< -10	0:00
-10 .. 0	0:00
0 .. 10	0:00
10 .. 20	0:00
20 .. 30	72:50
30 .. 40	52:00
40 .. 50	0:00
50 .. 60	0:00
60 .. 70	0:00
> 70	0:00

Details displays the total operating hours run, broken down into individual temperature ranges:

Note:

This function is not supported by all MICRO PANEL devices. The total operating hours or the temperature histogram are only supported from OS Image Release 2.14.0 (see [System properties](#)). The operating hours are therefore only counted from 2.14.0.

4.11.4

Device



The «Device» tab displays the network name. The network name can also be set using [Netsetup](#). The device can be restarted if required after the network name is changed.

See also chapter [Owner](#).

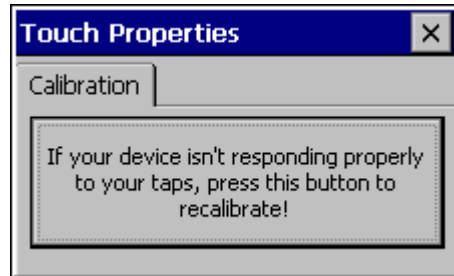
4.11.5

Command Line Parameters

The [command line call](#) is described in chapter 4.1. The following parameters are supported:

Parameter	Description
-status	Display of the current memory setting, see chapter Memory
-storage «n»	Setting the storage size as the number of MBytes used for the file system. For example, '-storage 5' means that 5 MBytes of memory are used for the file system.
-fullscreen	The application is started in full screen mode.
-q	Suppresses program output
-? or -h	Display of the possible parameters

4.12 Touch (Touch)









This program is used for the [Touch calibration](#) and for the [Touch Enable/Disable](#). If the program is started without command line parameters, the following dialog appears:

4.12.1 Touch enable/disable

The touch display always distinguishes between «normal status», «touch disabled» and «touch locked» status. When disabled or locked the device cannot be operated. When locked, the touch display can either be reactivated by means of a special touch operation (see table below) or by using «**Touch.exe –unlock**». If the touch display is disabled, the device can only be restored to the normal state using «**Touch.exe –enable**». The following table shows how to disable or lock the touch states.

The touch icon in the toolbar indicates the current status:

	Touch is enabled (default). Touch operation is only possible in this state.
	Touch is disabled with «Touch.exe –disable». To reactivate the touch use «Touch.exe –enable». The touch can also be enabled/disabled using other applications.
	Touch is damaged or a wrong touch operation occurred. After a wrong touch operation the touch changes to the default state after 1-2 seconds.
	Touch is locked – This status is set directly by the application or by means of «Touch.exe –lock». Touch is unlocked in different ways, depending on the device type (see below) or by using «Touch.exe –unlock». IR touch: To reactivate the touch display, it must be touched in two places that are diagonal to each other (double finger touch) with a minimum distance of about 5cm. Resistive touch: To reactivate the touch display (TouchEnable), it must be touched in all 4 corners of the screen in succession, in a clockwise or counter clockwise direction.
	The bitmap shown on the left will appear as a result of a correct double finger touch or four successive touches.
	IR touch: Touch is dirty. Please clean! Resistive touch: Touch is badly calibrated. Please recalibrate!

Note:
Every «Disable» increments a counter by 1. The counter is decremented by 1 with every «Enable». Only if the counter is 0 or less is the touch enabled. In other words, the same number of «Enables» as executed «Disables» are required in order for the touch function to be activated. The same applies to «Lock» and «Unlock».

The touch function is disabled during the device startup. Touch activation is carried out by default when the [Autoexec.bat](#) file is run. If, for example, touch is not to be enabled until the end of the startup phase, the following lines with «**..-disable / enable**» should be added to the [Autoexec.bat](#) file.

If the touch is to be locked directly on startup, the line «Touch.exe -lock» should be added to the [Autoexec.bat](#) file. The touch display can then be unlocked by using the special touch procedure (see the table above).

Examples of calls inside a batch file (e.g. [Autoexec.bat](#)):

Touch disable/enable	Touch Lock
ECHO ON	ECHO ON
Touch.exe -disable	Touch.exe -lock
...other command lines!!!	...other command lines!!!
Touch.exe -enable	ECHO OFF
ECHO OFF	

4.12.2

Touch calibration

Note:
Touch calibration is only required for resistive touch devices.

Touch calibration only needs to be carried out if a **MICRO PANEL** with a resistive touch is no longer reacting correctly to screen touch operations.

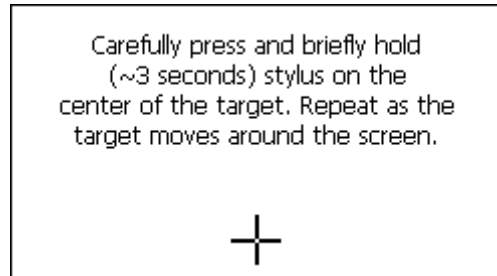
If the program is started with «**Touch.exe -r**», the calibration is called immediately and the following displays appear. This call can also be implemented in the [Autoexec.bat](#) file.

Note:
The touch stylus for calibration is supplied with the device. Do not use any other pointed objects as these might damage the resistive foil!

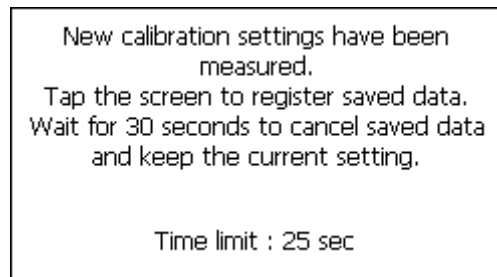
4 System Settings

4.12 Touch (Touch)

The following display will appear on screen after calibration is started with the «**Recalibrate**» button. A touch stylus is required for the calibration process. Follow the on-screen instructions.



Press and hold the stylus briefly in the middle of the target (cross-hair) repeat this while the target is moving.



The following screen will appear once the calibration has been carried out successfully. The calibration is completed as soon you confirm calibration by touching the screen. The calibration data is stored as persistent data in the device, i.e. it is also retained after a restart.

4.12.3

Mode selection

The touch driver can be set to two different modes. The standard mode is optimized for GRS.

Running the command "Touch.exe -upcancel" switches the touch driver to the second mode. In this mode, a MouseUp event is triggered when a touch error occurs.

In standard mode it is possible to change with the command "Touch.exe -cancel".

4.13

USB Pointer Device

Note:
This functionality only applies to XV100 devices with a USB-Host connection.

Standard HID devices are supported.

Note:
The mouse pointer is no longer displayed after an operating error on the touch.
The mouse pointer is only visible again after a left-click of the mouse.

Note:
If the mouse is pulled out with the button depressed, the mouse click remains active. This may cause problems, if the panel is accessed with the RemoteClient.

4.14 Keyboard Setup (Keyboard)



The keyboard setup – control panel makes the country setting for a USB keyboard. You can select the desired keyboard layout in the dialog shown above. The selected keyboard layout is still retained after a restart.

The following keyboards are supported:

- English (United Kingdom)
- English (United States)
- French (France)
- German (Germany)
- German (Switzerland)
- Italian (Italy)
- Spanish (Spain)

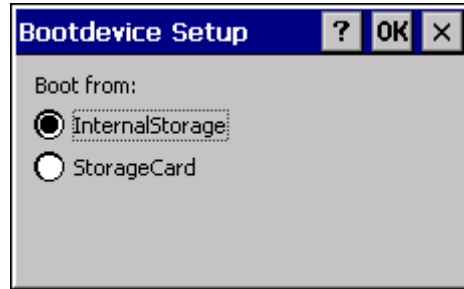
4.14.1 Command Line Parameters

The [command line call](#) is described in chapter 4.1. The following parameters are supported:

Parameter	Description
-l	indication of the keyboard layout: 0409 English (United State) 0809 English (United Kingdom) 0407 German (Germany) 0807 German (Switzerland) 040C French (France) 0410 Italian (Italy) 040A Spanish (Spain)
-s	Displays the active keyboard layout
-q	Suppresses program output
-? or -h	Display of the possible parameters

4.15 BootDevice Setup (BootDevice)

Note:
The BootDevice setup is only available on XV100 devices.



BootDevice Setup is used to specify the medium from which the panel is to start. The relevant selection options are displayed according to the features of the panel.

4.15.1 Command Line Parameters

The following parameters are supported:

Parameter	Description
-device <boot device type>	1: Start of InternalStorage 2: Start of StorageCard 3: Start of USBStorage
-state	Displays the current status
-r	Restarts the panel after the settings are made. This option only functions if a setting was changed.
-q	Suppresses program output

4.15.2 Mandatory start from StorageCard

If CTRL/DOWNLOAD button is pressed for longer than 3 seconds during power-up, the device starts from the StorageCard. This can be useful when the device must not start from InternalStorage. For instance in case of defective OS in contiguous memory.

4.15.3 Update of the operating system

In order to install a new operating system on the device, the appropriate BIN file must be copied to the folder \<BootDeviceName>\OS\. In the case of start-up from InternalStorage, the difference in OS's will be noted and the OS loaded from the InternalStorage\OS directory in contiguous memory.

4.16 StorageManager (StorageManager)

Note:
The incorrect handling of this program may cause panels to become non-operational. It should therefore only be used by experienced users. The StorageManager should only be used in exceptional situations.

Note:
The StorageManager is only available on XV100 devices.

4.16.1 Store Info

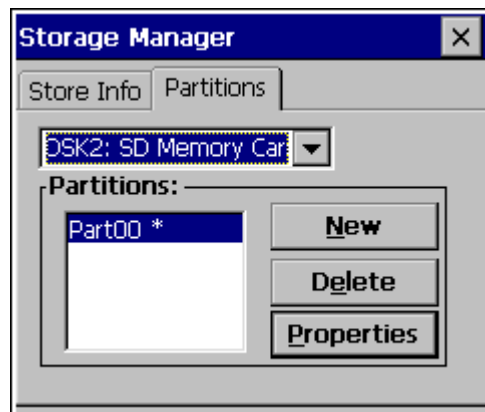


The following procedure should be observed to format an entire data carrier:

- Select the data carrier
- Touch Dismount
- Touch Format

All partitions on the data carrier were deleted. (FormatStore was executed)

4.16.2 Partitions

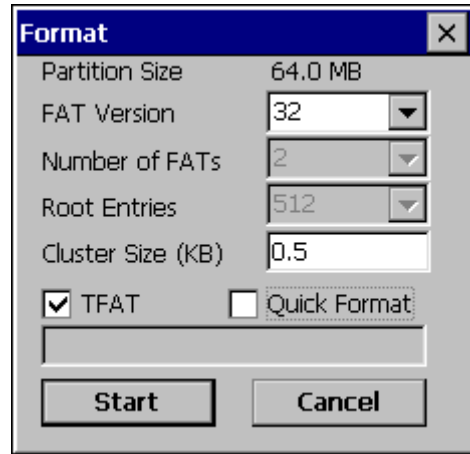


When a new partition is created, the maximum available memory space can be used, or the size can be defined in the number of sectors. MBs are converted into sectors as follows:

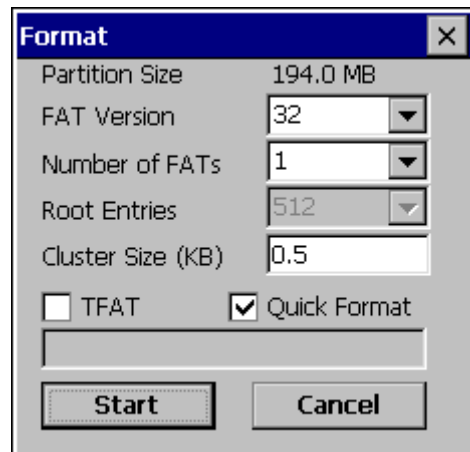
$$\text{Number of sectors} = \text{Number of MB} \times 1024 \times 1024 / 512$$

This partition must still be formatted. To do this, choose Properties and select Dismount, followed by Format.

4.16.3 Recommended settings for internal memory



4.16.4 Recommended settings for external data carrier

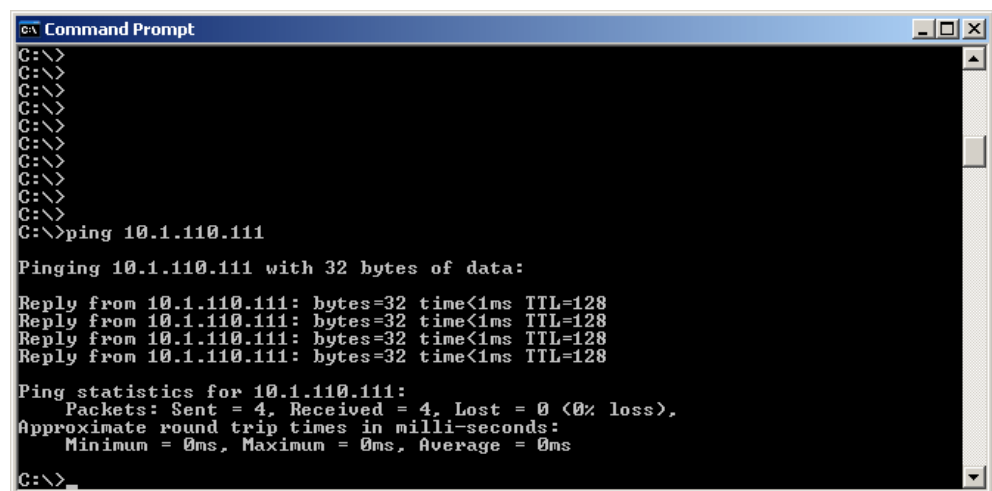


5 Network Test

5.1 Introduction

Once you have adjusted the system settings, particularly network settings, first of all check whether the device can be addressed in the network.

For this connect the device directly to a network connection/hub (patch cable) or directly with a network cable to your workstation (cross cable).



```
GA Command Prompt
C:\>
C:\>
C:\>
C:\>
C:\>
C:\>
C:\>
C:\>
C:\>
C:\>
C:\>
C:\>ping 10.1.110.111

Pinging 10.1.110.111 with 32 bytes of data:

Reply from 10.1.110.111: bytes=32 time<1ms TTL=128
Reply from 10.1.110.111: bytes=32 time<1ms TTL=128
Reply from 10.1.110.111: bytes=32 time<1ms TTL=128
Reply from 10.1.110.111: bytes=32 time<1ms TTL=128

Ping statistics for 10.1.110.111:
    Packets: Sent = 4, Received = 4, Lost = 0 (0% loss),
    Approximate round trip times in milli-seconds:
        Minimum = 0ms, Maximum = 0ms, Average = 0ms

C:\>
```

From the workstation carry out at the MS-DOS entry prompt the «Ping» command with the IP address set on the device (see example).

The first part of the network test is completed if you receive a response from the device as shown in the example.

Next carry out the test on the **MICRO PANEL** in the same way as the network test. The exact procedure is described in the chapter [Ping](#).

Only when both network tests have been successfully completed is the network configuration correct or completed.

5 Network Test

5.1 Introduction

For network specialists the following command line programs are available, for further information refer to the command line help (call the program with parameter «/?», e.g. «ipconfig /?»):

- ipconfig
- route
- tracert
- netstat

6 ActiveSync Connection

6.1 General

An ActiveSync connection can be used for data transmissions, diagnostics or debugging. An exclusively DEBUG connection can also be created via «Manual Server» (see also [Procedure: Manual Server](#)). The ActiveSync connection requires the installation of the Microsoft **ActiveSync** program on the PC and the starting of the «Repllogswitch» program on the device. This connection can be implemented via the serial or USB interfaces. Depending on the **MICRO PANEL**, the installation of the «WceUsbSh.sys» driver is required on the PC for the USB connection. The driver files are contained in the GALILEO installation but are not automatically installed.

Note:

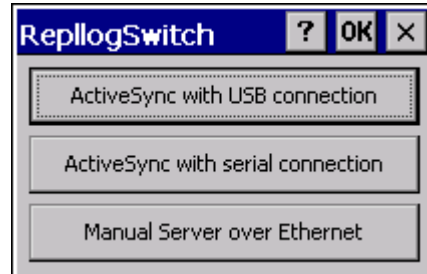
The connection requires at least ActiveSync Version 3.5. ActiveSync is a program from Microsoft and can be obtained free of charge from the Internet.

USB driver installation:

1. Connect devices with each other.
2. Select the ...WcUsbSh.inf file in the «New Hardware Found» dialog. The driver is located in the subdirectory «Tools\USB Driver» in the GALILEO installation directory.

6.2

Repllogswitch



The «Repllogswitch.exe» program is used for establishing a connection with a PC via «ActiveSync» or «Manual Server». This is described in the chapter [Procedure: ActiveSync](#) or [Procedure: Manual Server](#).

The program supports the call with the following command line parameters:

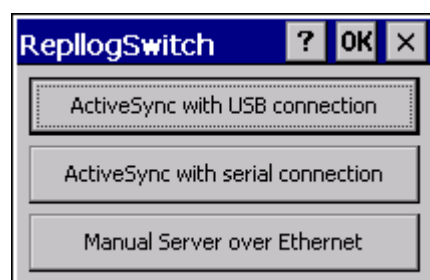
Parameter	Description
-s	The ActiveSync connection is started directly via the serial connection without the display of the above dialog.
-u	The ActiveSync connection is started directly via the USB connection without the display of the above dialog.
-e	The DEBUG connection is started directly via the Manual Server without the display of the above dialog. See also the chapter Procedure: Manual Server .
-a «IP address:port»	IP address and port number of the host PC for connection establishment using «Manual Server». This entry is absolutely necessary when using «Manual Server». See also the chapter Procedure: Manual Server .

Note:
The buttons «...USB...» and «...serial...» are only operable if the MICRO PANEL has the interface concerned and this is still available.

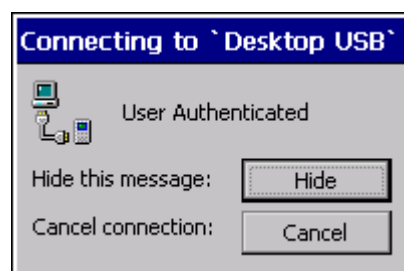
6.3

Procedure: ActiveSync

- The Microsoft ActiveSync must be started on the PC.
- The «RepllogSwitch.exe» program must be started on the **MICRO PANEL** («Start – Programs – Communication – RepllogSwitch»)
- Connect the panel and the PC via USB or the serial interface.



- Select the required interface in the dialog shown above.
- The following dialog will then appear. If the dialog closes again without any error messages, this means that the connection could be established successfully.



- The following dialog is displayed on the PC (only a chapter of the dialog is shown)**:



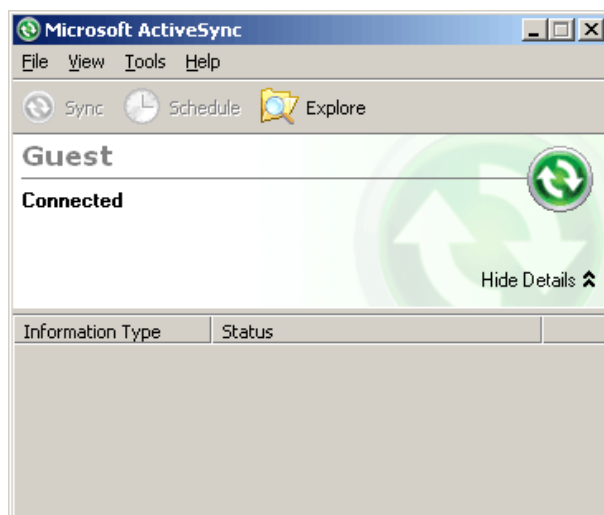
- Confirm the dialog with «No»
- The connection was successful.

****Note:**

The partnership prompt will not appear if the following setting is made in the PC's registry:

[HKEY_LOCAL_MACHINE\SOFTWARE\Microsoft\Windows CE Services]

"GuestOnly"=dword:00000001



For example, the file system on the device can now be viewed using the «Browse» function.

6.4

Procedure: Manual Server

The connection using «Manual Server» is designed for DEBUG tasks only. In order for the connection establishment to be started, the IP address of the host PC and the port number must be set with the parameter `-a`. The settings in the development environment must also be set accordingly on the PC. Further information is provided in the documentation of the development environment.

To simplify entry of the settings for the manual server, it is possible to make entries in the `Autoexec.reg` file. Through this, the command is available at every restart of the device.

Example:

```
[HKEY_LOCAL_MACHINE\Explorer\RunHistory]
"0"="repllogswitch.exe -a 172.17.108.10:4096"
"1"="repllogswitch.exe"
```

7 Programs

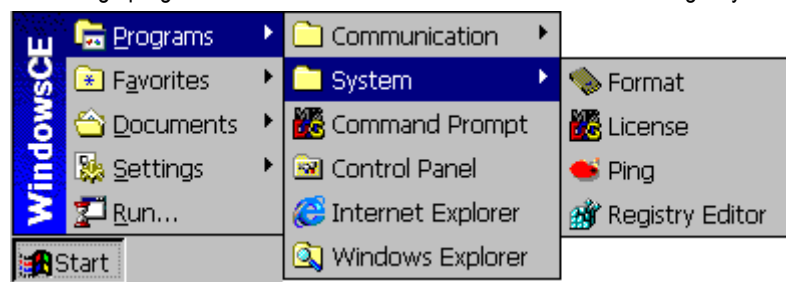
7.1 General

MICRO PANEL devices with Windows CE contain a number of programs which are described briefly below. This list is not complete and the programs are not available on all **MICRO PANEL** devices.

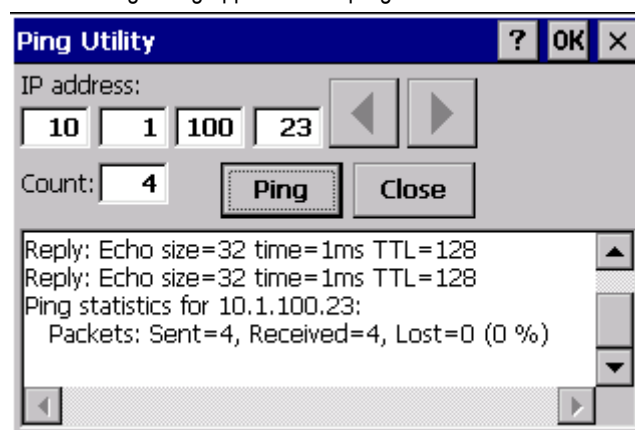
7.2

Ping

The «Ping» program for the network test can be started in the following way via the menu.



The following dialog appears if the program is started **without command line parameters**:



The dialog can be used to set the IP address and the number of pings. The result of the pings is output in the display field.

If the program is called **with command line parameters**, the results are output in an MSDOS window. The call is as follows and the following command line parameters are supported:

ping [-l Size] [-n Number] [-w Timeout] Address

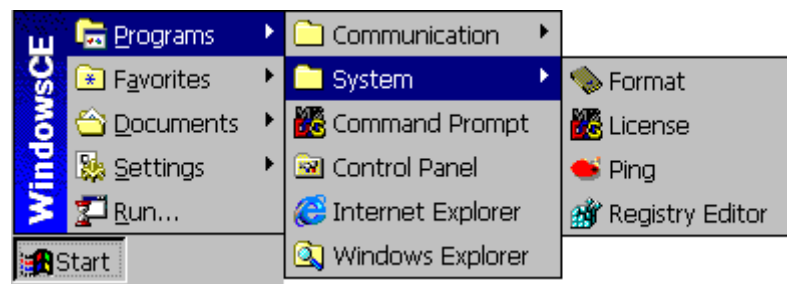
Parameter	Description
-l Size	Send buffer size in number of bytes (default 32)
-n Number	Number of «Pings» (default 4)
-t	Pings are carried out until the program is interrupted
-w Timeout	Timeout in milliseconds
-?	Display of the possible parameters
-h	

7.3

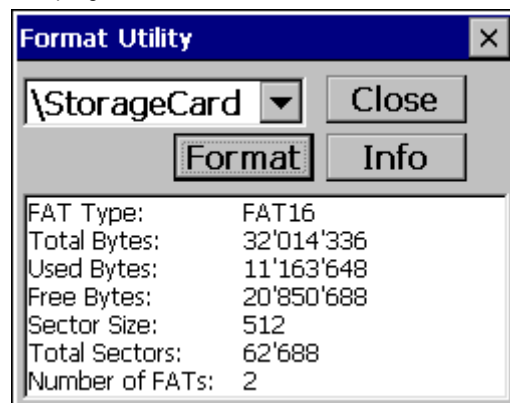
Format

Note:
The «Format» program is only available on XV400 devices.

The «Format» program for formatting Flash cards (PCMCIA or Compact Flash) can be started via the menu shown below.



The program is started as follows:



The Flash card drive can be selected in the top left selection field. The lower display field shows the information about the selected drive. This information includes details such as FAT type, total memory, currently used memory etc. Much of the information is not normally required.

The «**Format**» button can be used to format the selected Flash card. The card with a defined FAT type can only be selected with command line options. The FAT types that are permissible depend on the number of sectors.

The «**Info**» button is used to update the information displayed.

7.4

Remote Server

The Remote Server/Client programs allow the device to be operated remotely. A **MICRO PANEL** with Windows CE can thus be operated from a PC (see [Remote client](#)). The server program for Windows CE is called «CERemoteSvr.exe» and provides the services in a PC or another **MICRO PANEL**. For the password protection see [Password settings](#).




Use:

- Remote operation and diagnostics
- The target device (server) is controlled via the client, and the entries made via the keyboard, mouse or touch operation are passed onto the target device. The screen content of the target device is displayed 1:1 on the client.

Procedure:

- Both server (**MICRO PANEL**) and client (PC) must be connected together via Ethernet and both devices (panel and PC) must be assigned a unique IP address and corresponding subnet mask (see also chapter Network test).
- Server: Start of the remote server on the device via shortcut (Start - Programs - Communication - Remote Server) in the Start menu, or start the file «CERemoteSvr.exe» in the «OS» directory on the Flash card.



Touching the «**Hide**» button causes the dialog shown above to be hidden, i.e. only the icon  in the Start bar is visible. Use the «**Disconnect**» button to close the current client/server connection. The «**Password Settings**» button can be used to modify the [password settings](#).

7.4.1

Command Line Parameters

Parameter	Description
-port n	Set port number to n, values between 1000 and 65535 are permissible (the default port number is set to 51738).
-c	Closes an «open» connection between server and client. The call only has a function if the call is executed on the device on which the server is already running.
-exit	Exits the remote server. This call only has a function if the remote server is already running.
-i «File»	Defines the path to the INI file in which the password settings are saved. If the password protection is activated without the /i parameter, an INI file «CeRemoteSvr.ini» is created in the directory «\Storagecard\os». The INI file only contains encrypted data.
-h	Minimizes the server dialog immediately to the status bar when the server is started (dialog not visible).
-?	Displays information on the available command line parameters.

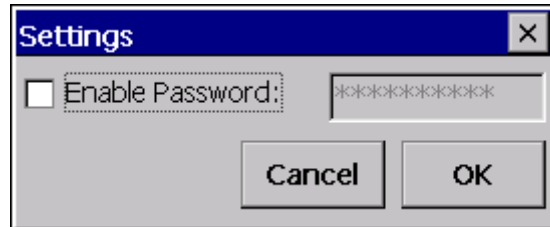
- The program «CERemoteSvr.exe» can also be started via the «Autoexec.bat» file.
- A connection between the server and client can be disconnected as follows:
 - Touch the «Disconnect» button on the server dialog
 - The server is closed
 - Command line call of the server with parameter -c

Note:
For performance reasons, the server/client connection should not be permanently active. The active server only slightly loads the performance of the device. However, an active client connection slows down the system considerably in certain circumstances. The server only supports one client connection at a time.

7.4.2

Password Settings

The following dialog is used to modify the password settings.



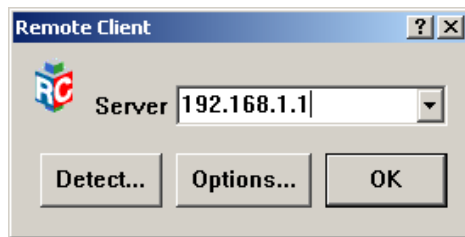
The password settings are stored in the file «CERemoteSvr.ini» in the directory «\«Bootdevice»\os\». The data stored is naturally encrypted. The file is stored on the Flash card, which means that the password settings are also retained after a restart.

7.5

Remote Client

The remote server/client programs enable the target devices to be remotely controlled. For example, a panel with Windows CE can be operated from a PC. The following client programs are available:

CERemoteClient.exe	Remote client for Windows CE
RemoteClient.exe	Remote client for Windows NT, 2000, XP, Vista, 7



See also chapter [Remote server](#).

The IP address of the server must be stated in the entry field. An additional port number can be added if required (e.g. «192.168.1.1:23450»).

Touch «OK» to start the client/server connection. If the connection cannot be established successfully, the error message «Failed to connect to server» will appear after approx. 10 seconds.

Note:
The number 51738 is used if the port number is not given. The port numbers of remote server and client must match (see also [Remote server](#)).

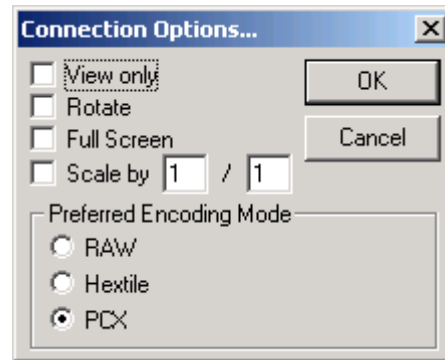


If the server is password protected, the dialog shown on the left will appear for entering the password.

7.5.1

Options

The following options can be selected:



View only: Only display – no entries possible

Rotate: Rotates the display by 90° anti-clockwise.

Scale by x / y: Zoom setting in which the setting 2 / 1 represents double size. The setting 1 / 2 represents a corresponding reduction.

Full Screen: The client is displayed without a frame and menu. This is useful if the screen resolution of the server and the client are the same size. The client/server connection must then be closed either via the Disconnect button in the server dialog or by calling «CERemoteSvr.exe -c». See also the description of the [Remote server](#).

If the screen resolution of the client is not enough for displaying the server screen, the display will appear with scroll bars.

7.5.2

Detect

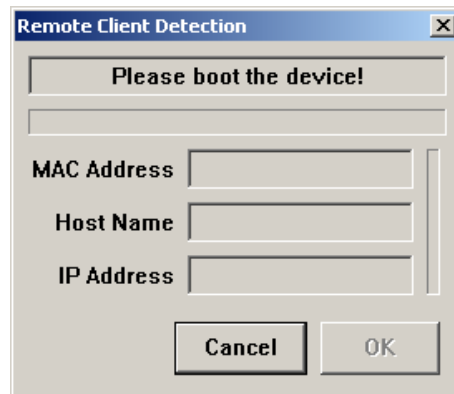
Note:
If a firewall is present, the RemoteClient needs to be added as an exception to make use of the Detect function (uses ports 67 and 68).

Pressing the „Detect“ button allows to establish a connection to a device with an unknown IP address.

This works only if:

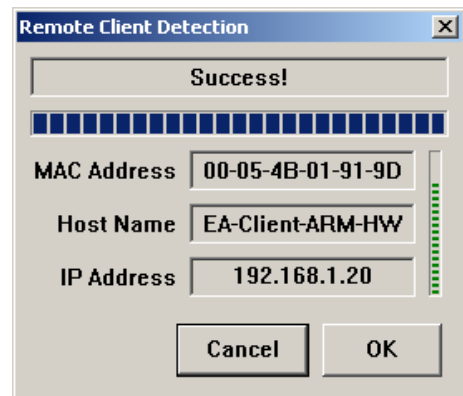
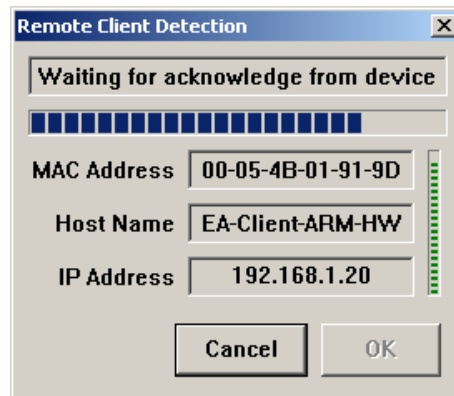
- IP address obtained from a DHCP server (network – setting)
- On XC150 devices, the startup with DHCP can be forced by pressing the CTRL button

After you select "Detect" the following window appears. The user will be prompted to restart the device. The program monitors the DHCP traffic on the network connection.



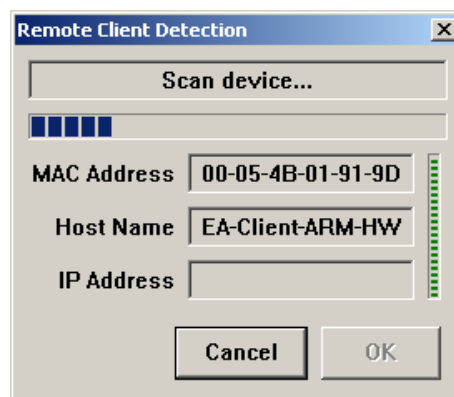
DHCP Server is present

If a DHCP server is in the network, the RemoteClient recognizes the IP address assigned to the device. All information is displayed in the window and by pressing the OK button, the connection to the device will be established.



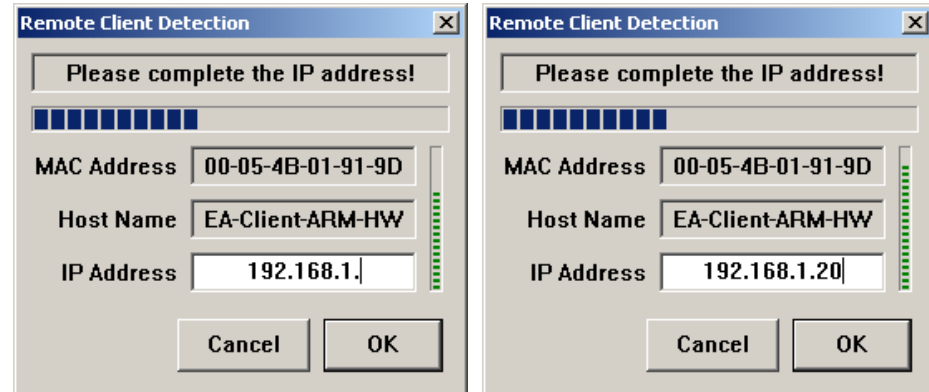
No DHCP Server present

If there is no DHCP server on the network, the RemoteClient itself acts as a DHCP Server after 1.5 seconds.

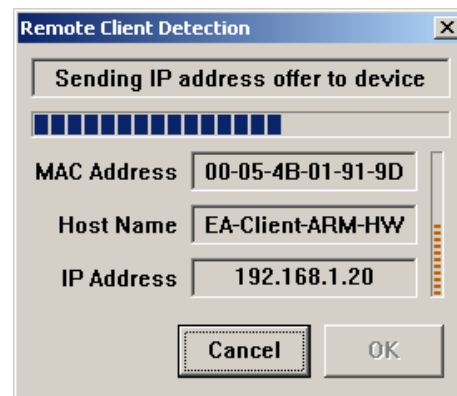


7 Programs 7.5 Remote Client

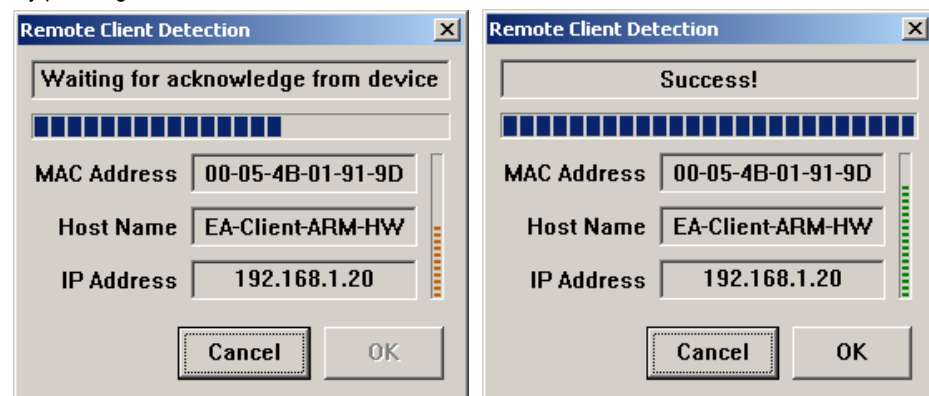
It will display all known information. For the IP address of the device appears a proposal which has to be supplemented.



After pressing the OK button the IP address is assigned to the device on the next DHCP request from the device. The "RemoteClient DHCP server" waits for a confirmation from the device that the received IP address has been accepted.



By pressing the OK button, the connection to the device will be established.



7.5.3

System Menu

The System menu contains the following entries, although not all entries are available in Windows CE:

Menu item	Description:
Request screen refresh	This function refreshes the view in the remote client.
Touch lock Touch unlock Touch disable Touch enable	These functions enable the touch to be locked/unlocked or enabled/disabled. Further information on this is provided in the chapter Touch Enable/Disable .
Send Ctrl-Alt-Del Send Ctrl-Esc Send Alt-Tab	These functions execute the corresponding button combination on the device. «Ctrl-Alt-Del» and «Alt-Tab» launch the Task Manager, «Ctrl-Esc» activates the START button on the Windows start bar.
** Ctrl Down Ctrl Up Alt Down Alt Up	These functions are used to enable key combinations using ALT and CTRL to be run on the device. For example, if «Ctrl Down» is executed, the CTRL button stays «actuated» until «Ctrl Up» is executed. These functions are only used with older versions of the remote server.

** These functions are not available, if the command line parameter **-nospecialkey** is used. The menu items vary according to the version of the remote server.

Note:
The System menu on the remote client for Windows CE is called using the ? button in the title bar.

7.5.4

Command Line Parameters

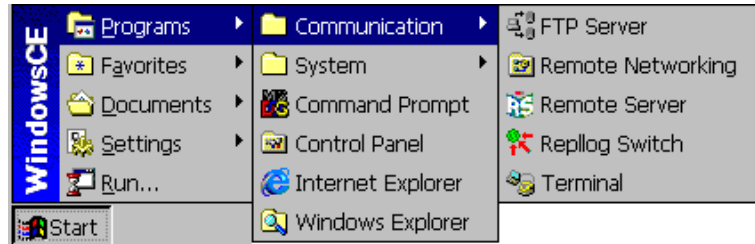
Start the remote client on the Panel/PC. The command line call supports the following parameters:

Parameter	Description
server:Port	See also Remote server
-rotate	See chapter Options
-fullscreen	
-viewonly	
-scale x/y	
-raw	Communication with the remote server without compression.
-hextile	Communication with the Remote server executed with HEXTILE compression.
-pcx (default)	Communication with the Remote server executed with PCX compression (recommended).
-nospecialkey	Removes the menu items «Send Ctrl-Alt-Del», «Send Ctrl-Esc» and «Send Alt-Tab» from the System menu .
-autoconnect	Starts a communication to the Remote Server, independent if another connection is active on that Remote Server
-exit	Close the active CERemoteClient (only on Panel!)

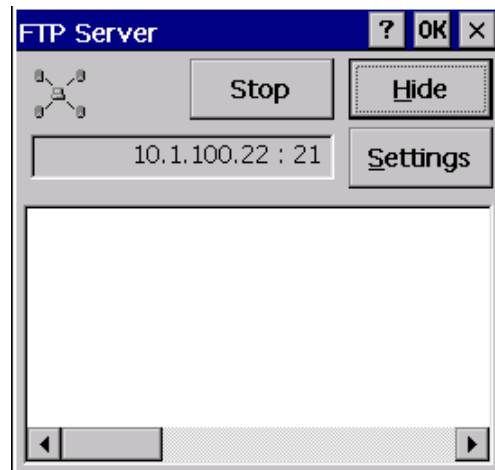
7.6


FTP Server

The FTP server (File Transfer Protocol) is used for transferring files via the Ethernet. The server program for Windows CE is called «FtpSvr.exe».



The following dialog appears on startup.



The **Hide** function is used to minimize the dialog, i.e. it is reduced to the  icon inside the start bar. Double touching this icon will then cause the above dialog to be displayed again. A password protection can be activated via «**Settings**», «**Enable Password**» (see [Password settings](#)). Touching the **Stop** button will disconnect an active FTP connection and stop the FTP server. Touching **Start** will restart the FTP server and enables an FTP connection to be re-established.

Use:

- Upload/download of the project
- Up/download of the password and recipe data

Procedure:

- Start the FTP server on the panel via the Start menu.
- Configuration of an FTP connection in GALILEO or another program. For this, the IP address, the user name and the password must be known. A new device has the following factory settings:

IP address:	IP address
User name:	Ignored
Password:	Can be used if required

- Transfer of the files
- Closing of the FTP server

Note:
Only files that are NOT being used or processed at the same time by other programs can be accessed. For greater security the FTP server should not be permanently active.

7.6.1

Password Settings

The password settings are stored in the «FtpSvr.ini» file in the directory «\\"Bootdevice"\\OS\». The data stored is naturally encrypted. The file is stored on the boot device, which means that the password settings are also retained after a restart.

7.6.2

Command Line Parameters

The following parameters are supported:

Parameter	Description
-d	Deactivates a previously activated password protection.
-p «Password»	Activates the password protection with the new password transferred as a parameter.
-i «File»	Defines the path to the INI file in which the password settings are saved. If the password protection is activated without the /i parameter, an INI file «FtpSvr.ini» is created in the directory «\\"Bootdevice"\\OS\». The INI file only contains encrypted data.
-h	Minimizes the server dialog immediately to the status bar when the server is started (dialog not visible).
-exit	Exits the FTP server. This call only has a function if the server is already running.
-port «number»	Defines the port number of the FTP server, the default port number is 21. Only values between 0 and 65535 are allowed.
-prio low -prio high	The setting «high» sets the priority of the FTP server to 1 higher than normal, «low» sets the priority to 1 below normal. This setting is optional.
-root «directory»	Defines the root directory. Changing to upper directories is not allowed.
-timeout «sec.»	Defines the timeout in seconds (default is 5, maximum is 120). This is helpful for slow connections via modem.
-pasvPortStart «Number» -pasvPortEnd «Number»	These parameters are used to define the ports of the FTP server to be used for data connections in passive mode. Values between 1024 and 65535 are permissible. Either both parameters or neither of each can be specified.
-q	Suppresses program output.

7.6.3

WAN

If the FTP server is accessed via the WAN, it is recommended that the ports of the server are set up accordingly and adjusted for any firewall present.

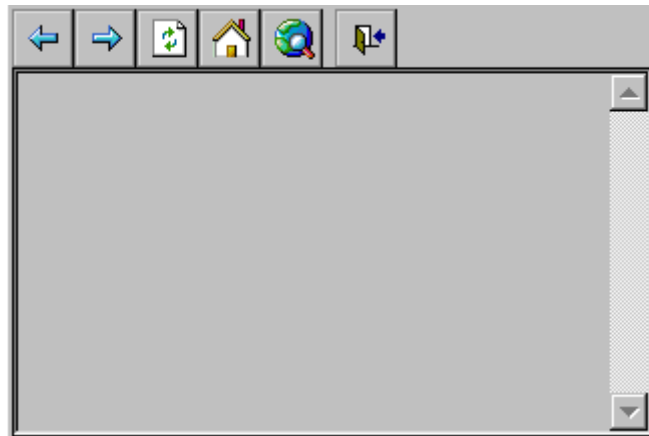
Configuration example:

```
START FtpSvr.exe -port 8021 -pasvPortStart 60000 -pasvPortEnd 65535
```

7.7

HTML Browser (Internet Explorer)

The program can be called via command lines and also via the Start menu. The program file for the command line call is called «MiExplorer.exe». If the program is called via the Start menu (Start – Programs – Internet Explorer), the settings are transferred from the INI file in the directory «\Bootdevice\OS». If the program is started with MiExplorer.exe without any parameters, the «Back», «Forward», «Refresh» and «Exit» buttons are visible.



The browser is based on Microsoft Internet Explorer (IE) (Windows CE 3.0: Version 4.01, Windows CE 5.0: Version 6.0). The IE browser contains the following functions:

- HTML browser
- Display of graphic formats BMP, GIF, JPG
- Java Scripts (JScript) and Visual Basic Scripts (VBScript)
- ActiveX components (see also chapter [ActiveX components](#))

7 Programs

7.7 HTML Browser (Internet Explorer)

The icons have the following functions:



«Go Back» button



«Go Forward» button



«Stop» button – Stop the loading of the current page.



«Refresh» button



«Go Home» button



«Go Search» button



«Open» button. The «Open File» dialog opens



«Taskswitch» button – Used to change to another application without closing Internet Explorer.



«Options» button – Shows the currently set options such as start address, cache size etc.



Exit Internet Explorer

7.7.1

Command Line Parameters

The program can be called via command lines and also via the Start menu. The startup behavior and the display of the browser can be modified either via an [INI File](#) or command line parameters. The following command line parameters are supported:

Parameter	Description
-a «Start page»	Specifies a start page such as http://www.eaton-automation.com
-i «INI file»	See chapter INI File The INI file should be specified with a directory if the INI file is not located in the same directory as «MIEplorer.exe».
-u «URL file»	See chapter URL file The URL file should be specified with a directory if the URL file is not located in the same directory as «MIEplorer.exe».
The following settings are only considered if an INI file is not used!	
-FullScreen -StatusBar -MenuBar -Animate -Open -Stop -Print	These settings are described in the chapter INI file in further detail.
-GoHome «url»	Definition of the start address (call via the GoHome button within the toolbar)
-GoSearch «url»	Specifies the search address (call via the GoSearch button within the toolbar)
-NoNavigation	Do not display the two navigation buttons Forward and Back inside the toolbar.
-NoToolBar	Do not display the toolbar with all the buttons and the address list.
-NoClose	Do not display the Close button inside the toolbar.
-NoRefresh	Do not display the Refresh button inside the toolbar.
-SmallIcons	Display small icons in the toolbar.
-AddressBar «Width»	Display the address list in the toolbar with the «Width» (specified in pixels). See also the chapter INI File
-TaskSwitch «File»	Display the TaskSwitch button in the toolbar and on actuation change to the application with the file (EXE file) specified. See also the chapter INI file

All parameters are optional.

Examples of IE calls:

MiExplorer.exe -a file://\storagecard\html\start.html -GoSearch www.google.com

MiExplorer.exe -a file://\storagecard\pics\image.jpg

MiExplorer.exe -i \storagecard\os\miexpl.ini

7.7.2

INI File

The startup behavior and the display of Internet Explorer can be modified either via the command line parameters (see chapter [Command line parameters](#)) or INI File. The directory «\Bootdevice\os» contains an example of an INI file «MiExplorer.ini».

The INI file contains the following settings.

[MiExplorer]	Description:
Start Page	Start address specified (call via the GoHome button in the toolbar) Examples of files on the Flash card: file://\StorageCard\Html\Start.html file://\StorageCard\Html\image.jpg
Search Page	Specifies the search address (call via the GoSearch button within the toolbar)
CacheLimit	Default setting is 0x200, meaning a cache size of 512kB. Cache sizes smaller than 100 kB are not supported. The upper limit is determined by the available system memory capacity.
FullScreen	0: Taskbar remains visible (default) 1: Application is started in full screen mode
StatusBar	0: Status bar is not displayed (default) 1: Status bar is shown at the bottom of the screen
ToolBar	0: Toolbar with buttons is not shown 1: Toolbar is shown with the following buttons [MiExplorer buttons] at the top of screen (default)
MenuBar	0: Menu not visible (default) 1: Menu displayed
AddressBar	0: Address entry field not visible (default) 1: Address entry field visible ToolBar=1
AddressBarWidth	Width of the address entry field in pixels AddressBar=1
Animate	0: Animation icon not displayed (default) 1: Display of animation icon on the right of the screen within the toolbar ToolBar=1
TaskSwitch EXE	Definition of the EXE file to be activated on the Taskswitch call (see also [MiExplorer Buttons] – Taskswitch)

7 Programs

7.7 HTML Browser (Internet Explorer)

[ProxySettings]	
ProxyEnable	0: Proxy server not activated (default) 1: Proxy server activated
ProxyServer	Address of the proxy server including port number e.g. 192.1681.1:8080
AnchorUnderline	yes, no, hover

[MiExplorer Buttons]	Defines which buttons to be shown in the toolbar!
Largelcons	=0: Display buttons at standard size =1: Display buttons extra large (default)
GoBack	=0: «Back» button not visible =1: «Back» button is displayed (default)
GoForward	=1: «Forward» button is displayed
Stop	=1: «Stop» button is displayed (default = 0)
Refresh	=1: «Refresh» button is displayed (default =1)
GoHome	=1: «GoHome» button is displayed (default =0) see also [MiExplorer] – GoHome
GoSearch	=1: «Go to SearchPage» button is displayed (default =0) see also [MiExplorer] – GoSearch
Open	=1: «Open» button is displayed (default = 0)
Print	=1: «Print» button is displayed (default = 0)
Find	=1: «Find» button is displayed (default = 0)
Taskswitch	=1: «Taskswitch» button is displayed (default = 0) Used to switch to another application (see also [MiExplorer] – Taskswitch EXE)
Options	=1: «Options» button is displayed (default = 0)
Close	=1: «Close» button is displayed (default=1)

Example of an INI file:

```
[MIEplorer]  
Start Page=http://www.eaton-automation.com  
Search Page=http://www.google.ch  
CacheLimit=0  
FullScreen=0  
StatusBar=0  
ToolBar=1  
MenuBar=0  
AddressBar=0  
AddressBarWidth=150  
Animate=0  
TaskSwitch EXE=
```

```
[ProxySettings]  
ProxyEnable=0  
ProxyServer=itgproxy:80  
AnchorUnderline=no
```

```
[MIEplorer Buttons]  
Largelcons=1  
GoBack=1  
GoForward=1  
Stop=0  
Refresh=0  
GoHome=0  
GoSearch=0  
Open=0  
Print=0  
Find=0  
Taskswitch=0  
Options=0  
Close=1
```

7.7.3

URL file

The URL file contains the definitions of an HTML start page and has the following appearance:

```
[InternetShortcut]  
URL=http://www.eaton-automation.com
```

7.7.4

ActiveX Components

ActiveX components must be registered correctly so that they can be used. The components for the corresponding processor type must naturally be available. No ActiveX components are registered by default.

The registration is carried out using the program «RegSvrCe.exe xxx.dll», in which the file «xxx.dll» contains the ActiveX component concerned.

Note:

The registration of ActiveX components must be carried out on every system start ([Autoexec.bat](#))!

7.8 Proxy Administrator (ProxyAdmin)

The **ProxyAdmin.exe** utility can be used to configure a proxy server connection for the device. This connection is valid for all applications that wish to establish an Internet connection. It must therefore be ensured that the modification of these settings by individual applications is controlled. The current settings are stored in the registry. These are found under:

[HKEY_CURRENT_USER\Software\Microsoft\Internet Explorer\Main]

"Anchor Underline"="no"

"ProxyEnable"=dword:00000001

"ProxyServer"="proxy.server:portnumber"

ProxyAdmin.exe can be used with or without parameters.

- Without parameters, the current settings are loaded from the registry and the proxy server connection is configured.
- With parameters, the settings are also loaded from the registry. These values are overwritten with the new settings, stored back in the registry and the proxy server connection is configured.

The following command line parameters are supported:

Parameter	Description
- No parameter	Load settings for the proxy server from the registry
-proxy «ProxyServer:Port»	Name of proxy server and its port address
- anchor «setting»	“Anchor Underline” defines the appearance of links in the browser page no : Never underline links (default) yes : Always underline links hover : Underline links when mouse pointer is over link
- off	Sets ProxyEnable to 0 -> deactivates the proxy server setting without deleting the server name.
- show	Shows the current settings of the registry
-q	Suppresses program output
-h or -?	Displays information on the available command line parameters.

Example when using a REG file:

```
Regedit.exe -import \StorageCard\proxy.reg -q
ProxyAdmin.exe -q
```

Content of proxy.reg:

7 Programs

7.8 Proxy Administrator (ProxyAdmin)

```
[HKEY_CURRENT_USER\Software\Microsoft\Internet Explorer\Main]
"Anchor Underline"="no"
"ProxyEnable"=dword:00000001
"ProxyServer"="proxy.test.com:8080"
```

Example with parameter call:

```
ProxyAdmin.exe -proxy proxy.test.com:8080 -anchor no
```

7.9

WEB Server (HTTPD)

The device is provided with a web server that is based on the standard web server from Windows CE 3.0 and Windows CE 5.0 respectively. The web server (HTTPD) supports only a part of the HTTP/1.0 protocol with restricted functionality. ASP (Active Server Pages) is supported with JScript 3.0 and VBScript 3.0 (Windows CE 3.0) and JScript 5.6 and VBScript 5.6 (Windows CE 5.0) respectively.

Note:
More detailed information on the functions of the web server is provided in the MSDN documentation from Microsoft.

7.9.1

General Settings

The following registry settings control the functionality of the web server (see also chapter [Registry Editor](#)).

Note:
Changes in the registry are not activated until the next restart (see [Web server start/stop](#)) of the web server. The dword entries are in hexadecimal format (see also chapter [Sample settings](#)).

Basic registry entries under [HKEY_LOCAL_MACHINE\COMM\HTTPD]:

Entry	Type	Description
DirBrowse	dword	«Directory browsing» is permitted if the value does not equal 0. If the value is 0, the content of the directory cannot be viewed in the browser.
DefaultPage	string	List of all default pages, separated by semicolons, e.g. "default.htm;default.asp;index.htm;index.asp" If the web server selects a directory, the corresponding pages are searched for according to the default page. If the appropriate page is found, this is transferred to the browser. If none of the web pages are present, the directory content is displayed or an error is returned to the browser, depending on the DirBrowse setting.
Basic	dword	This value must be set to 0.
NTLM	dword	If the value is 0, no authentication is used. If the value does not equal 0, authentication is carried out with NTLM. See also chapter HTTP Authentication .
AdminUsers	string	List of all user names with administrator rights, separated by semicolons. Caution: All users will have administrator rights if this entry is empty!
Port	dword	Port number for HTTP requests (the default setting is: dword:0050 à Port number 80)
LogFileDirectory	string	Directory in which the LOG file is created – do not save on the «StorageCard» nor on «InternalStorage»

MaxLogSize	dword	Maximum size of the LOG file. If the maximum size is reached, the oldest entry present is overwritten. No log file is created if the value is 0 or is not set. The memory size according to the available memory must be observed (see chapter Memory).
MaxConnections	dword	Maximum number of connections to the web server that can be opened at the same time (default): dword:000a max. 10 connections)

7.9.2

Virtual Directory Settings

These registry entries contain the mapping between the virtual directories in the web server and the physical directories on the device. If required, the authentication level and the access permissions can be set for each directory.

[HKEY_LOCAL_MACHINE\COMM\HTTPD\ROOTS\]	Root directory
[HKEY_LOCAL_MACHINE\COMM\HTTPD\ROOTS\«Subdirectory»]	Subdirectory (virtual)

Note:
Remember to use the string «\» and «/», which is absolutely necessary in the registry entry!

The following settings can be made for each directory (base and subdirectory):

Entry	Type	Description
Default	string	Specified directory (physical)
A [optional]	dword	Authentication level for this directory: 0: No authentication required (default) 1: Authentication with user ID and password required 2: Authentication with user ID and password, in which the user must possess administrator rights
P [optional]	dword	Access permissions for this directory. The permissible values are described in the chapter HTTP Authentication - Permissions .
UserList [optional]	string	List of permissible users. If this list is empty, all users are permissible. More detailed information on this setting is provided in the chapter HTTP Authentication - UserList . The user administration is described in the chapter User Administration .

Note:
Changes to the registry entries are not active until the next restart of the web server (see [Web server start/stop](#)) of the web server. The dword entries are in hexadecimal format (see also chapter [Sample settings](#)).

Refer to the following chapter for more detailed information:

Topic	Chapter
Authentication and access permissions	HTTP Authentication
Registry	Autoexec.reg and Registry Editor
Example of web server settings	Sample settings

7.9.3

HTTP Authentication

Only NTLM authentication is supported. If **no** authentication is required, the «**NTLM**» value (see table above) must be set to 0 and all «**A**» registry entries also set to 0. If authentication is used, the registry entry «**NTLM**» must be set to 1. The «**A**» registry entries of the corresponding virtual directories must also be set to 1 (see chapter [Virtual Directory Settings](#)).

Note:

Only the local [User Administration](#) can be used (see chapter [7.10](#))! The connection to a domain controller is not supported.

Access authentication A

The registry entry **A** for each virtual directory describes the type of access authentication permitted. The following steps are required to access a web page when **A**>0. The valid values for **A** are described in the chapter [Virtual Directory Settings](#).

- 1 The user must be authenticated for the corresponding virtual directory. Access is refused if this is not successful.
- 2 The user is assigned administrator permissions if the user name is contained in the registry entry [HKEY_LOCAL_MACHINE\COMM\HTTPD\AdminUsers].
- 3 If **A**=1 or **A**=2 and the user is contained in the registry entry [HKEY_LOCAL_MACHINE\COMM\HTTPD\ROOTS\«directory»\UserList] access to the web page permitted.

Note:

All users are granted administration rights if **A**=2 and the registry entry [HKEY_LOCAL_MACHINE\COMM\HTTPD\AdminUsers] is empty. It must therefore be ensured that the registry entry AdminUsers is not empty!

- 4 If one of the above steps fails, access to the web page is not granted.

User list (UserList)

When listing the users for the virtual directories concerned (see [Virtual Directory Settings](#)) the following syntax must be observed:

Example	Description
"GladysL;AnnD;-KimYos"	The users «GladysL» and «AnnD» have access permissions The user «KimYos» does not have access (identified with a leading minus character)
"*"	All users have access permissions

Note:

Administrators always have access to a virtual directory if A=1. This applies even if the user is not contained in the UserList registry entry.

P Access Permissions

The registry entry **P** describes the type of access permission granted for every virtual directory. If the registry entry is missing, the default access permissions are Read, Execute and Script (hex value 0205).

P (values in hex)	Description
0001	Read access permitted (Read – Access)
0002	Write access permitted (Write – Access)
0004	Execution of a function permitted (Execute – Access)
0200	Scripts are permitted (Script – Access)

The above values for **P** are bit values. For example, for read and script access, **P** must be set to the value dword:0201. Other settings of the virtual directories are described in the chapter [Virtual Directory Settings](#). See also the following chapter [Sample Settings](#).

7.9.4

Sample Settings

The settings for the web server can be set as follows in a [REG file](#) (see also chapter [Autoexec.reg](#)):

```
[HKEY_LOCAL_MACHINE\COMM\HTTPD]
"Port"=dword:50          ; 80 decimal
"Basic"=dword:0
"NTLM"=dword:1
"DirBrowse"=dword:1
"DefaultPage"="default.htm;default.asp"
"AdminUsers"="AnnD;GladysL"
"LogFileDirectory"="\\windows\www"
"MaxLogSize"=dword:1000

[HKEY_LOCAL_MACHINE\COMM\HTTPD\ROOTS\]
"Default"="\\storagecard\www"
"A"=dword:0

[HKEY_LOCAL_MACHINE\COMM\HTTPD\ROOTS\Dir1]
"Default"="\\storagecard\www\dir1"
"A"=dword:1

[HKEY_LOCAL_MACHINE\COMM\HTTPD\ROOTS\Dir2]
"Default"="\\storagecard\www\dir2"
"A"=dword:0
"P"=dword:201
```

Notes on the above example:

- The directory «Dir1» is password protected.
- Only script and read accesses to directory «Dir2» are permitted.
- The entries with «**dword**» are in **hexadecimal** format.

7.9.5

WEB Server Start/Stop

The [WEB server](#) is not started by default. It must be ensured that the registry entries are set correctly before the web server is started. The web server can be started and stopped with the program **HttpdStart.exe**. The possible command line calls are listed in the table below:

Functionality	CALL
START	HttpdStart -start
Stop	HttpdStart -stop
Status: Display of the current status	HttpdStart -status
Suppresses program output	Additional -q

7.10 File Server

With Windows CE 5.0 a file server is contained in the device.

Note:
Further information on the functionality of the file server is provided in the Microsoft MSDN documentation.

7.10.1 General Settings

The following registry settings control the functionality of the file server (see also chapter [Registry Editor](#)).

Note:
Changes to the registry entries are not active until the next restart of the file server (see [File server start/stop](#)) of the file server.
The dword entries are in hexadecimal format (see also chapter [Sample settings](#)).

Registry entries under [HKEY_LOCAL_MACHINE\Services\Smbserver\Shares]:

Entry	Type	Description
UseAuthentication	dword	Set to 1 by default. If this value is set to 0 (not recommended), the authentication on the file server is deactivated and all users on the network have access to all enables. Observe the instructions of chapter Use without authentication .

7.10.2 Virtual Directory Settings

These registry entries contain the mapping between the virtual directories in the file server and the physical directories on the device.

Note:
Changes to the registry entries are not active until the next restart (see [File server start/stop](#)) of the file server.
The dword entries are in hexadecimal format (see also chapter [Sample settings](#)).

Registry entries under [HKEY_LOCAL_MACHINE\Services\SMBServer\Shares\«Enablename»]:

Entry	Type	Description
Path	string	Specified directory which is enabled.
Type	dword	0 for file enable 1 for print enable (not supported)
UserList	string	Specifies a list of authorized users, separated by semicolons. These must be created via the User Administration (UserAdmin) . This entry is ignored if UseAuthentication = 0 is set.

7.10.3

File Server Start/Stop

The file server is started by default. The file server must be restarted after registry entries are changed. The file server can be started and stopped with the program services.exe. The possible command line calls are listed in the table below:

Functionality	CALL
File server restart	Services.exe refresh SMB0:
START	Services.exe start SMB0:
Stop	Services.exe stop SMB0:
Display status	Services.exe list

7.10.4

Sample Settings

The settings for the file server can be set as follows in a [REG file](#) (see also chapter [Autoexec.reg](#)):

```
[HKEY_LOCAL_MACHINE\Services\SMBServer\Shares\SampleVRoot]
"Path"="\\InternalStorage\Data"
"Type"=dword:0
"UserList"="AnnD;GladysL"
```

The registering of the users and the restarting of the file server must be carried out after the registry keys are set (see also chapter [Autoexec.bat](#)):

```
useradmin.exe -add AnnD -p password1
useradmin.exe -add GladysL -p password2
services.exe refresh SMB0:
```

7.10.5

Access to the enable:

The enable can be accessed from a different device by stating the panel name and the enable name:
e.g. \\MI_XXXXXX\SampleVRoot

Access from a PC is also possible using the IP address of the panel:
e.g. \\192.168.1.1\SampleVRoot

7.10.6

Note for users of newer Windows versions

From Windows Vista the LAN Manager authentication level must be set to "Send LM & NTLM -- use NTLMv2 session security if negotiated."

Further information is provided in the chapter Name resolution in Windows networks.

Alternatively, this setting can also be changed with the following registry key:
[HKEY_LOCAL_MACHINE\SYSTEM\CurrentControlSet\Control\Lsa]
"Incompatibilitylevel"=dword:00000001

7.10.7

Use without authentication

When accessing from a panel without authentication, the entry of a user name may nevertheless be requested. In this case, any user name (e.g. MI_PANEL) can be entered. The next enable access will then no longer request a user name and the access will function normally. The same procedure applies after a "disconnect" of the connection.

This strange behavior seems to be a characteristic of Windows CE 5.0. Use without authentication is therefore not recommended.

7.11

User Administration (UserAdmin)

The NTLM user administration is used for managing the users and associated passwords on the **MICRO PANEL**.

This user administration is used by the [WEB server](#) and the [File server](#).

Note:

The users are first only administered temporarily on the MICRO PANEL. Only with the command line parameter «permanent» are the currently set users permanently accepted. This means that the user definitions are also retained after a restart of the MICRO PANEL.

The command line program **UserAdmin.exe** is used for administering the users. The supported program functions are as follows:

Function	CALL
Add a new user	UserAdmin -add «User» -p «Password»
Delete a user	UserAdmin -del «User»
List all currently entered users	UserAdmin -list
The currently entered users are accepted in the system permanently. The users are added to the Autoexec.reg file.	UserAdmin -permanent
Suppresses program output	Additional -q

Note:

NTLM authentication in Windows CE 3.0 does not work under Windows Vista and Windows 7.

7.12

SNTP Client

Under Windows CE 5.0 the device contains a Simple Network Time Protocol (SNTP) client. The SNTP implementation is derived from the Network Time Protocol (NTP). SNTP synchronizes the system time on a device with that of an SNTP server. This in turn receives its time from a reference source.

Note:
Further information on the functionality of the SNTP client is provided in the Microsoft MSDN documentation.

7.12.1

General Settings

The following registry settings control the functionality of the SNTP client (refer also to chapter [Registry Editor](#)).

Note:
Changes to the registry entries are not active until the next restart of the SNTP client. The dword entries are in hexadecimal format (see also chapter [Sample settings](#)).

Basic registry entries under [HKEY_LOCAL_MACHINE\Services\Timesvc]:

Entry	Type	Description
Server	string / multi_string	Specifies the domain name of an SNTP server. If only a name is specified, this value is a string. If a list of servers is specified, the value is a multi-string. Public time servers: swisstime.ethz.ch - IP 129.132.2.22 ETH Zürich thrad.cybernet.ch - IP 212.90.197.226 Swisscom pool.ntp.org - IP 212.101.3.211 Int. NTP Server Project
Refresh	dword	Specifies the duration in milliseconds between the synchronizations with the SNTP server. Caution: Minimum value for refresh: 5*60*1000ms
RecoveryRefresh	dword	Specifies the time in milliseconds until the next synchronization if the previous attempt failed. Caution: The specified time for this code must be less than or equal to the specified time for the refresh code. Caution: Minimum value for RecoveryRefresh: 5*60*1000ms
Threshold	dword	Specifies the time in milliseconds between the time on the SNTP server and the current time on the device. If the difference between the time on the SNTP server and the current time on the device is greater, the time synchronization is interrupted.
AutoUpdate	dword	If this value is set to one (1), the SNTP client is activated if a server was defined.
ServerRole	dword	Always set to zero (0). SNTP server is not supported!

7.12.2

Sample Settings

The settings for the SNTP client can be set as follows in a [.REG file](#) (see also chapter [Autoexec.reg](#)):

```
[HKEY_LOCAL_MACHINE\Services\TIMESVC]
"server"=multi_sz:"swisstime.ethz.ch","thrad.cybernet.ch"
"AutoUpdate"=dword:1
"ServerRole"=dword:0
"refresh"=dword:927C0
"recoveryrefresh"=dword:57E40
"threshold"=dword:5265C00
```

Notes on the above example:

- The entries with «**dword**» are in **hexadecimal** format.
- "refresh"=dword:927C0 corresponds to 10 minutes in milliseconds (10*60*1000)

- "recoveryrefresh"=dword:57E40 corresponds to 6 minutes in milliseconds (6*60*1000)
- "threshold"=dword:5265C00 corresponds to 1 day in milliseconds (24*60*60*1000)

The settings for the SNTP client can be stored in a REG file SNTP.REG and started in the Autoexec.bat file as follows:

```
REM Verify boot device, if parameter is not
REM available, the boot device is StorageCard
SET bootdev=StorageCard
IF "%1" == "" GOTO START
SET bootdev=%1
```

```
IF exist \%bootdev%\sntp.reg CALL regedit.exe "\%bootdev%\sntp.reg" "/Q"
services.exe refresh NTP0:
```

7.12.3

Start/Stop/Refresh of the SNTP client

The SNTP client is started by default. The values for a time synchronization are not set in the default setting.

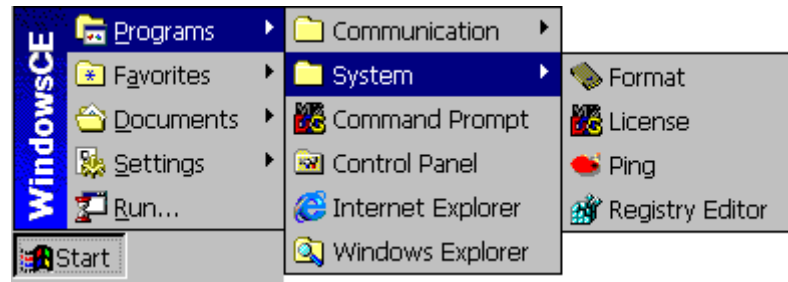
The SNTP client is prepared by setting the appropriate registry entries. The services.exe program transfers the new registry entries to the SNTP client. The possible command line calls are listed in the table below:

Functionality	CALL
Restart of the SNTP client with actual registry entries	Services.exe refresh NTP0:
START	Services.exe start NTP0:
Stop	Services.exe stop NTP0:
Status: Display of the current status	Services.exe list

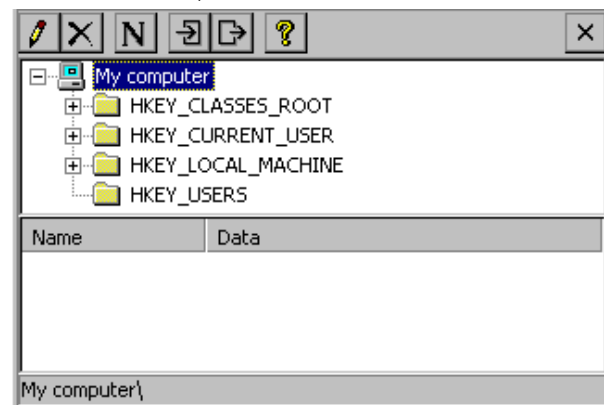
7.13

Registry Editor







The registry editor in Windows CE is called «RegEdit.exe». The functions are comparable with those of the registry editor in Windows 98, NT or 2000.



The following window appears when the startup is carried out without parameters (see also [Command line call](#)):



The registry editor enables system settings to be displayed or edited. The buttons inside the toolbar have the following functions.

	Edit selected entry – a dialog appears for editing the numerical or alphanumerical value
	Delete selected entry
	Add entry – a dialog appears enabling the selection of the different types «Key, String, Multi String, Double Word, Binary».
	Import from a REG File (see also File .REG)
	Export the selected item or folder into a REG File (see also File .REG)
	Display of program information.

More detailed information can be obtained from the description of the Windows operating system of a desktop PC (e.g. Windows 2000).

Note:
Modified settings are not retained after a MICRO PANEL system start. Permanent settings must be entered in the [Autoexec.reg](#) file which are transferred to the registry with every startup.

7.13.1

Command Line Call

Parameter	Description
-import «file»	Import the entries from the stated REG file
-export «file»	Export of the complete registry to the stated file
« "File" »	Import of the REG file , the file name must be placed between opening and closing delimiters! This entry is only supported to ensure compatibility, use the parameter «import».
-q	If the call is executed without the -q parameter, a message will appear on screen after the import. With the -q parameter, a message will only appear in the event of a fault.
-h or -?	Displays information on the available command line parameters.

7.13.2

File .REG

Files with the suffix «.REG» can be imported providing that the following syntax is observed:

Type	Description
String	"«Identifier»"="«text»"
Multi string	"«Identifier»"=multi_sz:"«text1»",«text2»",«text3»"
Double word	"«Identifier»"=dword:«Value in hex»
Binary	"«Identifier»"=hex(3):11,22,33,44,55,66,77,88 The hex(3) entry is mandatory The values 11,22,... are examples If the binary values in the REG file are written on several lines, the line break must be made with the «\» character.
;	A semi-colon at the beginning of a line indicates a comment line and is not included in the import.

See also chapter [Command line call](#), [Autoexec.reg](#).

Example of a REG file:

```
[HKEY_LOCAL_MACHINE\Hardware\DeviceMap\Touch]
    "CalibrationData"="2108,2032 1111,1029 1104 3053 3099,3043"
[HKEY_LOCAL_MACHINE\Comm\OnBoard1\Tcpip\Parms]
    "IPAddress"="192.168.1.1"
    "DNS"="192.168.2.2","192.168.2.3"
    "EnableDHCP"=dword:01
    "Test"=hex(3):12,34,56,78,9A,BC,EF
```

7.14

Background Picture (WALLPAPER)

Use this application to select a background picture for the desktop. Only the BITMAP (*.BMP) file format is supported. The command line call is as follows:

```
wallpaper.exe -b «file name including the path»
```

For example:

```
wallpaper.exe -b \storagecard\wince.bmp
```

Note:

The setting is lost after a device is restarted. The call for the background picture must be inserted in the [Autoexec.bat](#) file so that the background picture is transferred again after a restart. Bitmap files with a color depth of 8, 16 or 24 Bpp (bits per pixel) are supported. The bitmap should not exceed the maximum size of the screen resolution.

7.15

CF Backup

This application enables GALILEO and PLC projects to be copied from one Flash card to another. The operating system (OS directory) and the files [Autoexec.bat](#) and [Autoexec.reg](#) can also be saved.

The following options are available after the CFBackup.exe program is started:



The source directory and the destination directory are selected in **Source** and **Destination** respectively. Normally «\StorageCard» is the destination directory for the Flash card. Touch **Backup** to start the save operation. A prompt will first of all ask you to insert the source Flash card. The source Flash card is then read and is copied either directly to the destination Flash card or to a temporary directory. If the **Source** and **Destination** directories are the same, the user is asked to enter the destination Flash card. Depending on the volume of data to be copied, the request to insert the source or destination directory will appear several times until the copy operation has been completed.

Note:

The CompactFlash or PCMCIA drives can be found at the directories \StorageCard, \StorageCard2. See also chapter [File system](#).

7.15.1

Command Line Call

The [Command line call](#) is described in chapter 4.1. All parameters can be used as required, although only the settings of the used parameters can be changed. The following parameters are supported:

Parameter	Description
-source <path>	Source path for the copy command (Source:)
-dest <path>	Destination path for the copy command (Destination:)
-del	Deletes the destination path directories before starting copying
-GrsRuntime	Selects check box <GRS Runtime>
-GrsProject	Selects check box <GRS Project>
-GrsCustom	Selects check box <GRS Custom>
-GrsData	Selects check box <GRS Data>
-GrsRecipe	Selects check box <GRS Recipe>
-GrsPassword	Selects check box <GRS Password Setting>
-PlcRuntime	Selects check box <PLC Runtime>
-PlcProject	Selects check box <PLC Project>
-OS	Selects check box <OS>
-Autoexec	Selects check box <Autoexec>
-fullscreen	The application is started in full screen mode.
-? or -h	Display of the possible parameters

The example shows how a command line call can look like:

```
CFBackup.exe -source \StorageCard -dest \InternalStorage -GrsRuntime -GrsProject -Autoexec
```

7.16

AutoLaunch

Note:
The Tool AutoLaunch is only available on XV100 devices.

The **AutoLaunch.exe** tool detects the insertion of an SD card or a USB flash drive and carries out **one** required action. It is started by the OS and cannot be closed.

The \StorageCard\AutoLaunch.inf or \UsbStorage\AutoLaunch.inf file is used to configure the tool. The following requirements must be observed for the file entries:

- Only one entry is allowed per command. In case several are present, only the first one is used.
- If a path is not given for the file to be executed, the file is automatically looked for in the directory \StorageCard or \UsbStorage.
- The file stated is started with the program linked according to registry. The following file types are supported: *.EXE, *.BAT, *.REG
- The command "open=..." cannot be used to assign parameters to a file. (e.g. "test.reg -Q" or "delay.exe -t 5" are not possible!) These types of calls must be executed in a batch file.
- The upper / lower case is ignored.

The following is an example of this type of file:

```
[AutoLaunch]
open=program.exe
RunOnBoot=0
[AutoLaunchBoot]
open=update.bat
```

[AutoLaunch]

The file stated at "open=" is:

- executed when an SD card or a USB flash drive is inserted.

RunOnBoot=0 / RunOnBoot=1

If the line is not present or RunOnBoot=0, the stated file is not executed on start.

If the value RunOnBoot=1, the stated file is executed when the panel is started. However, the complete execution of the file before Autoexec.bat is started cannot be ensured.

[AutoLaunchBoot]

The file stated at "open=" is:

- started when the panel is booted, **before** Autoexec.bat is called (Autoexec.bat is not run until the stated file is executed completely).
- **not** executed when an SD card or a USB flash drive is inserted.

7.17

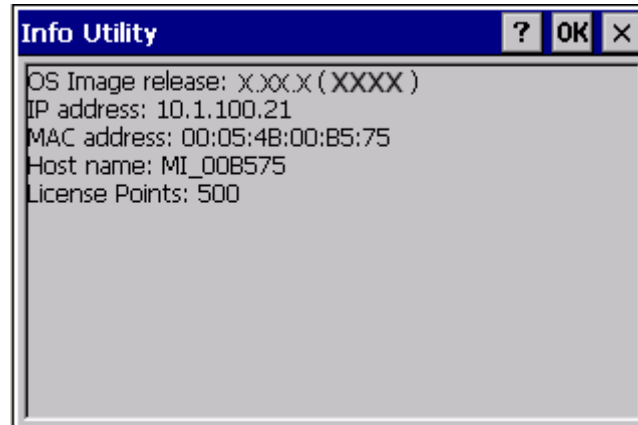
Device Restart (Reboot)

The auxiliary program **reboot.exe** executes a device restart. When no command line parameter is entered, a confirmation prompt will appear that has to be acknowledged by the user before the device is restarted. If the call is executed as follows «**reboot.exe -quiet**», no confirmation prompt will appear.

7.18

Information Display (Info)

The auxiliary program **info.exe** displays the information of the system.



The following command line parameters are supported:

Parameter	Description
-fullscreen	The program uses the full screen, i.e. the taskbar is not visible.
-first	Displays additional information for new users.
-export «file»	The information is written to the specified file. The file is only overwritten if the content is changed. Otherwise it is not overwritten.
-h or -?	Displays information on the available command line parameters.

7.19 File System Size (StorageMemorySize)**7.19****File System Size (StorageMemorySize)**

The auxiliary program **StorageMemorySize.exe** can be used to change the size for the file system. For the file system, the system takes by default 1/8 of the entire memory less the memory requirement of the operating system. In specific cases it can be of use to change this setting.

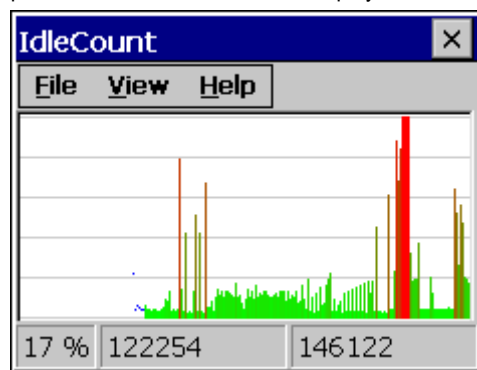
The following command line parameters are supported:

Parameter	Description
-size	Size of the file system in MBytes (for the program memory at least 1 MByte is additionally reserved for the program memory currently used)
	Actual file system size in KBytes
-q	Suppresses program output
-h or -?	Displays information on the available command line parameters.

7.20

System Performance (IdleCount)

The auxiliary program **idlecount.exe** records and displays system performance. The system performance is calculated and displayed as soon as the program is started.




The following settings can be changed via the menu:

Menu item	Description
Refresh Interval	Set the refresh interval between 100 ms and 10 s, default is 500 ms.
Style	The curve can be displayed as a line or as a bar graph.
Freeze Graph	Stop or restart recording and display.

The following command line parameters are supported:

Parameter	Description
-initref	Determines the maximum possible value for this device which is used for later recordings of system performance. This reference value applies to a system performance of 0%. The line « idlecount – initref » (without START) must be inserted at the beginning of the file so that the value is correctly calculated. The reference value is stored in the registry entry [HKLM\Software\Microsoft\Innovation\IdleCount\ReferenceValue].
-close	Exits a previously started instance of this program.
-h or -?	Displays information on the available command line parameters.

Note:
The program exits only with the command line parameter «close» or with menu item «File – Exit». If the window is closed by means of the X button, the application still continues running and is indicated as an  icon in the taskbar.

7.21

Extended Copy (ExtCopy)

The program ExtCopy.exe extends the functionality of the copy command in Windows CE. It serves to copy entire directories (and subdirectories). ExtCopy.exe is a command-line program and has no graphical user interface.

The following parameters are available:

Parameter	Description
-source <path>	Source path (directory) for the copy command.
-dest <path>	Target path (directory) for the copy command.
-e	Copies all subdirectories (empty and not empty folders).
-y	Suppresses the demand for confirmation that an existing file should be overwritten.
-m	Deletes the copied files from the source path. (Equivalent to „move-command“.)
-r	Overwrites write-protected files.
-i	Suppresses the demand for confirmation that an unwriteable file should be skipped.
-q	Suppresses program output.
-h or -?	Displays information on the available command-line parameters.

This example shows how a command-line call may appear:

```
ExtCopy.exe -source \StorageCard -dest \InternalStorage -e -r -i
```

Example of a batch file to create a backup of internal storage (GALILEO and PLC projects including Autoexec.* files are copied from internal storage to the SD Flash card.):

```
ExtCopy -source \InternalStorage\Appl -dest \StorageCard\Backup\Appl -e -y
ExtCopy -source \InternalStorage\Data -dest \StorageCard\Backup\Data -e -y
ExtCopy -source \InternalStorage\Runtime -dest \StorageCard\Backup\Runtime -e -y
ExtCopy -source \InternalStorage\PlcPrg -dest \StorageCard\Backup\PlcPrg -e -y
ExtCopy -source \InternalStorage\PlcRts -dest \StorageCard\Backup\PlcRts -e -y
copy \InternalStorage\autoexec.* \StorageCard\Backup\
```

7 Programs

7.21 Extended Copy (ExtCopy)

Example of a batch file to copy from the SD Flash card back to internal storage the backup created above:

```
ExtCopy -source \StorageCard\Backup\Appl -dest \InternalStorage\Appl -e -y
ExtCopy -source \StorageCard\Backup\Data -dest \InternalStorage\Data -e -y
ExtCopy -source \StorageCard\Backup\Runtime -dest \InternalStorage\Runtime -e -y
ExtCopy -source \StorageCard\Backup\PicPrg -dest \InternalStorage\PicPrg -e -y
ExtCopy -source \StorageCard\Backup\PicRts -dest \InternalStorage\PicRts -e -y
copy \StorageCard\Backup\autoexec.* \InternalStorage\
```

7.22

Gui4Batch

The Gui4Batch.exe program enables you to make your own decisions in batch files on the panel. The program makes it possible to place a text and up to four buttons. Depending on the button pressed, a different value is returned from the program.

The following parameters are supported:

Parameter	Description
-text <label>	The text to be displayed.
-b1 <label>	Text for the first button. Selecting this button in the program returns the value 1.
[-b2] <label>	Optional text for the second button. Selecting this button in the program returns the value 2.
[-b3] <label>	Optional text for the first button. Selecting this button in the program returns the value 3.
[-b4] <label>	Optional text for the fourth button. Selecting this button in the program returns the value 4.
[-t1] <sec>	Returns the value 1 after the specified number of seconds if no other button was pressed. Optional parameter.
[-t2] <sec>	Returns the value 2 after the specified number of seconds if no other button was pressed. Optional parameter.
[-t3] <sec>	Returns the value 3 after the specified number of seconds if no other button was pressed. Optional parameter.
[-t4] <sec>	Returns the value 4 after the specified number of seconds if no other button was pressed. Optional parameter.
[-bootRemove]	Is possibly required if the "Boot up with hidden OS shell" option is active so that the output of Gui4Batch is visible.
-h or -?	Displays information on the available command line parameters.

Note:
If a parameter is assigned a text that is longer than a word, the entire text must be written in " " .

Note:
Line breaks can be entered with the "text" parameter as „\n". Buttons can only be assigned one line of text.

Note on special characters:

- Pointed brackets (< and >) must not be used.
- The percent sign (%) may cause problems with upper and lower case text.
- The “ampersand” character (&) must be assigned to the “text” parameter twice and placed in quotation marks (e.g. Gui4Batch.exe -text "Do you accept the terms && conditions?" -b1 Yes -b2 No)

The example shows how a command line call can look like:

```
Gui4Batch.exe -text "Would you like to update the operating system?" -b1 Yes -b2 No
```

In a batch file, the return value of a program can be checked using the ERRORLEVEL tag variable. It must be ensured that the condition of the if command is fulfilled as soon as the ERRORLEVEL equals or is higher than the specified value. The highest possible ERRORLEVEL must therefore be interrogated first of all.

Refer to the following example of the content of a batch file:

```
gui4batch.exe -text "Please choose your language" -b1 English -b2 Francais -b3 Deutsch
if ERRORLEVEL 3 goto isGerman
if ERRORLEVEL 2 goto isFrench
if ERRORLEVEL 1 goto isEnglish
goto end

:isGerman
echo Wie geht es Ihnen?
goto end

:isFrench
echo Comment ca va?
goto end

:isEnglish
echo How are you?

:end
```

7.23

Holdfont

The Holdfont.exe utility program is a simple font manager. This enables fonts to be registered for applications such as CoDeSys Target Visu, Galileo, MiExplorer.

HoldFont can be called once. No fonts can be registered at a later time.
HoldFont must be executed before the application is started.

The following parameters are supported:

Parameter	Description
-load <path>	Loads the fonts in the specified path and stores the filter in the registry. Only one directory from the Boot device can be specified as a font directory.
-load quiet	Loads the fonts with the filter stored in the registry.
-release	Releases the registered fonts
-?	Display of the possible parameters
-h	

Example of a used registry code:

```
[HKEY_LOCAL_MACHINE\SOFTWARE\Eaton\HoldFont]
"Filter"="\\StorageCard\appl\fonts\*.ttf"
```

It must be ensured that the fonts are not registered and released by several applications. It is recommended that the used fonts are copied on system start (see chapter 1.3 Autoexec.bat) to a folder on the boot device and registered there.

Note:
Not all applications can use the registered fonts (e.g. PDF Viewer).

7.23.1

Galileo Runtime System (from 8.0.0)

On startup, GRS always sets HoldFont -load quiet.

GRS only registers fonts in APPLIFONTS that are not yet registered.

Only the fonts of the current language are registered. (MS Song, for example, is only registered if Chinese is selected.)

GRS only releases the fonts that it has registered itself. Apart from GRS no font had to be registered. HoldFont -release is then called.

7.24

VNCGateway

The program VncGateway.exe is located in the directory «\”Bootdevice”\os»

It serves to give exclusive access to our Remote Server using a RealVNC Viewer. Other clients are not supported have not been tested.

If a client is connected, this is displayed in the log window of the Remote Server.

If the client has requested a different format, there is also a message displayed because in this case the device can have a loss of performance. It is recommended to make sure to find the optimal settings on the device and the client.

Note:

If the display configuration (see chapter 4.5.4 Colors) of the device is in 8-bit mode (256 colors) the client needs to be run in palette mode.

If the display configuration (see chapter 4.5.4 Colors) of the device is in 16-bit mode (High color) the client needs to be run in TrueColor mode.

Note:

If there is already a Remote Client connected to the device, you cannot access this device with a VNC Viewer.

Note:

The access without a firewall is not recommended. The access from iOS or Android devices is recommended only in WIFI networks. The password protection doesn't provide sufficient security to put the device in the WAN without a firewall.

7.24.1

Command Line Parameters

The [Command line call](#) is described in chapter 4.1. All parameters can be used as required, although only the settings of the used parameters can be changed. The following parameters are supported:

Parameter	Description
-d	Close the active VNC connection if a second VNC connection try to connect to the device. The second VNC connection must be started again to get a connection to the device.

7.25

NotepadCE

The program NotepadCE.exe is located in the directory «\”Bootdevice”\os»

This tool can show and edit simple text files.

Only ASCII files in 8-bit or UTF-16 (LE) are supported.

Only files with a maximum of 64000 characters can be opened.

The following filetypes are linked with the NotepadCE: TXT, CSV, TAB, LOG

The following parameters are supported:

Parameter	Description
-readOnly	Opens the NotepadCE in read only mode.
-exit	Exits the NotepadCE. This call only has a function if the server is already running.
-h oder -?	Displays information on the available command line parameters.

This example shows how a command-line call may appear:

```
NotepadCE.exe \StorageCard\autoexec.bat -readOnly
```

7.26

RNetAccess

The command line program RNetAccess.exe is used to start a "Remote Network" (RN) connection. It has also the functionality to define the username and password for this connection.

It's possible to prepare the settings for a "Remote Network Access" (RNA) connection and start the connection later.

To have a more secure configuration, the RNetAccess.exe tool has access to the NTLM user administration. With the utility UserAdmin.exe, username and password can be defined and stored in the Autoexec.reg file. After a restart of the device, the username and the password are registered again.

7.26.1

Command Line Parameters

The [Command line call](#) is described in chapter 4.1. All parameters can be used as required, although only the settings of the used parameters can be changed. The following parameters are supported:

Parameter	Beschreibung
-e entryname	Name of the RASEntry to use.
-u username	Username for the "Remote Network Access" (RNA) connection.
-p password	Password for the "Remote Network Access" (RNA) connection.
-c	Start the connection with the actual settings.
-n	Disable most message boxes.
-m	Minimize the connection window.
-d	Disconnect the actual connection and/or close also error window.
-s	Show actual "Remote Network Access" (RNA) settings.
-sc	Show the actual connection state in the connection window.
-sf	Show the actual connection state with a file in the \Temp directory: Connect.RAS Remote network connected Disconnect.RAS Remote network disconnected Unknown.RAS Startup sequence with different states Error.RAS Error message on the screen
-q	Suppresses program output.
-? -h	Displays information on the available command-line parameters.

Note:

Each call of RNetAccess.exe deletes the connection state files.

To get the actual state, a call with the parameter "-sf" must be done!

Some examples:

- Start RN connection immediately:

```
RegEdit.exe -import \%bootdev%\VPN-PPTP.reg -q  
RNAccess.exe -e VPN-PPTP -u USERNAME -p PASSWORD -c -n -m
```

- Start RN connection immediately with password from NTLM user administration:

```
RegEdit.exe -import \%bootdev%\VPN-PPTP.reg -q  
UserAdmin.exe -add USERNAME -p PASSWORD -q  
RNAccess.exe -e VPN-PPTP -u USERNAME -c -n -m
```

- Define the RN connection first and start it later:
(Define the connection in the autoexec.bat and start the connection later in a PLC program without any information about the connection)

```
RegEdit.exe -import \%bootdev%\VPN-PPTP.reg -q  
RNAccess.exe -e VPN-PPTP -u USERNAME -p PASSWORD -q
```

Second call from RNAccess.exe from PLC with the command "SysExecuteCommand":
SysExecuteCommand ('RNAccess.exe -c -n -m -q');

- Disconnect connection and/or clear error message:

```
RNAccess.exe -d -q
```

- Show connection state with a file in the directory \Temp:
(With this call, the user can check from the PLC the actual connection state)

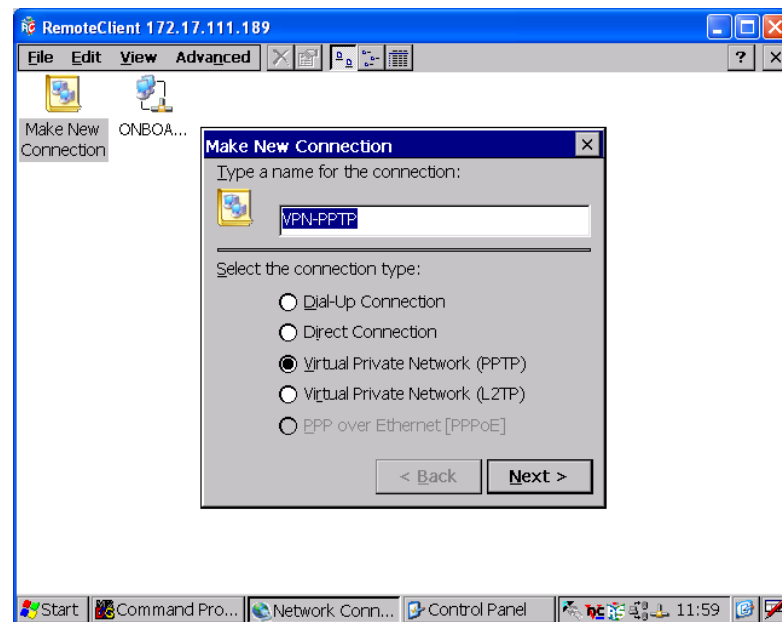
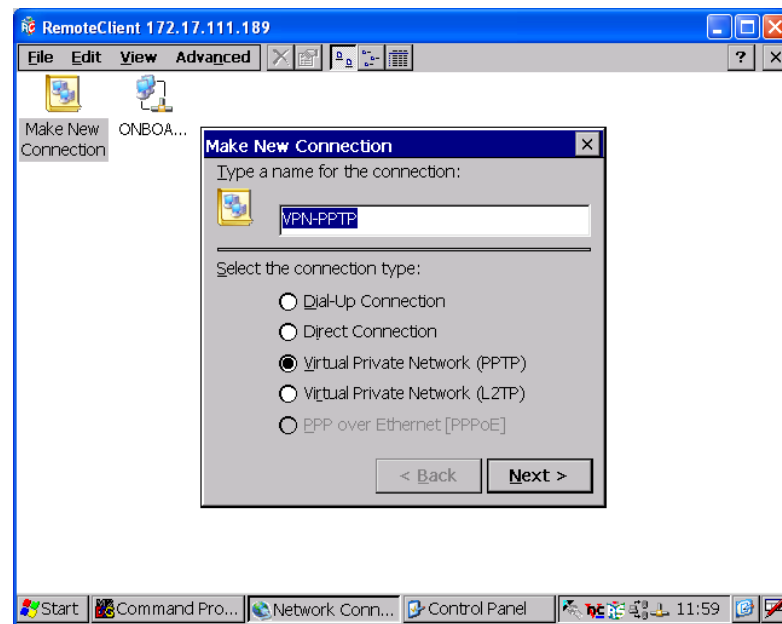
- RNAccess.exe -sf -q
-> Connect.RAS / Disconnect.RAS / Unknown.RAS / Error.RAS

7.26.2

Remote Access (RAS) entry

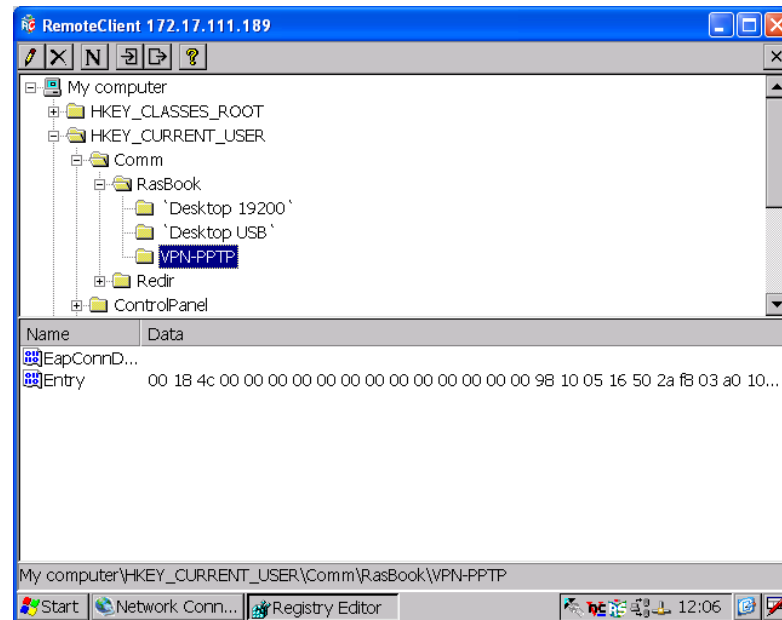
Define a RAS entry in "Network and Dial-Up Connections"

Setup the RAS entry for the VPN connection as you need:



Store the RAS entry in a registry file

With the “Registry Editor”, the new defined RAS entry is found at the following position:



The export button will open the “Save as” window to store the VPN-PPTP values in a registry file (e.g. VPN-PPTP.reg).

This registry file can be loaded with an entry to the “Autoexec.bat” file to redefine this RAS entry at each restart of the device.

(e.g. RegEdit.exe -import VPN-PPTP.reg -q)

8 Programs from Windows CE 5.0 Professional plus

8.1 File Viewer Applications

8.1.1 File Viewer Application Limitations

The Microsoft file viewers do not provide all of the functionality that is available in their corresponding Windows desktop applications. Typically these limitations result in a different document layout or presentation; however, in some cases, document content may not be visible.

General limitations

There is no support for files created in versions of Microsoft Office earlier than Office 97. There is also no support for the Microsoft Visual Basic macro programming language.

If sufficient memory for temporary file storage is not available on a Windows CE-based device, very large documents or documents that contain large graphical elements may not open, or may not display all of the content.

Font recommendations

Windows CE does not provide the same set of fonts that is available on Windows-based desktop operating systems. If the original font used in a document is not available, the file viewers show the closest possible approximation of the original format.

The following list shows fonts that you should include in your OS design for optimal performance with the file viewers:

- Arial
- Arial Italic
- Tahoma (in standard Installation from Windows CE)
- Times New Roman
- Times New Roman Italic
- Courier New (in standard Installation from Windows CE)
- Symbol
- Wingding

The listed fonts are included in the OS-directory and must be loaded with [Holdfont](#) (Holdfont.exe).

8 Programs from Windows CE 5.0 Professional plus

8.1 File Viewer Applications

8.1.2

Microsoft PDF Viewer

The Microsoft PDF Viewer gives the user the possibility to show PDF documents on a Windows CE device. When creating the documents, the user should take the functional limitations into account. To generate a PDF document the Adobe Acrobat should be used. Generally the user must check whether the created PDF document is shown correctly.

The Microsoft PDF viewer does not support the following functionality:

- Encrypted files
- Annotations
- Transitions
- CCITTFaxDecode images
- Acrobat forms. Content from forms, including images, is not displayed
- Clip paths
- Predictive GZIP decoding and CMYK JPEGs

The Microsoft PDF viewer operates with the following limitations:

- Poly-polygons are treated as polygons and therefore may have the interiors filled
- Embedded TrueType fonts are not used; instead they are mapped to existing fonts already installed on the system
- Colors from unsupported color spaces, such as ICCBased or DeviceN color, may be displayed incorrectly
- Text rotation is only shown in 90-degree increments
- Type 1 fonts are mapped using either the encoding or Unicode mappings
- Type 3 fonts are not supported, but some attempt is made to map them if a Unicode mapping exists

8.1.3

Microsoft Image Viewer

You can use the Image Viewer, to view and edit BMP, JPEG, GIF and PNG images. The Image Viewer allows the user to control how images are viewed in order to create a Slide Show. Images can be Sorted, Rotated and Zoomed. The timings between slides can be set and there are a variety of slide transition effects to choose from.

The Image Viewer "Edit Window" allows you to adjust the brightness/contrast and hue/saturation of an image. You can also scale, crop, and change the orientation of an image, then save it as a JPEG.

9 Licensing

9.1 General

The MICRO PANEL devices are provided with an integrated licensing system. A certain number of licensing points are required depending on the functions used. Devices already come on delivery with a standard number of license points depending on type. The actual number of license points is shown during the startup and inside the system information display (see chapter [Startup behavior](#), [System properties](#) and [License Administrator](#)).

Important:
Licensing is only required for additional/optional functions! The relicensing must be carried out specifically for each individual device. The license code provided by the distributor can only be used on the MICRO PANEL with the corresponding serial number!

9.2

Relicensing Procedure

With a license product certificate:

Fill in the license product certificate completely. For all further information refer to the License Product Certificate. Afterwards a license code will be sent to you immediately in accordance with your order (by email). A description of the licensing procedure is also sent with the code. One possibility is described in the chapter: [License Administrator](#).

Without a license product certificate:

Contact your **MICRO PANEL** distributor. The following information is required to order your license points:

- Specification of the required functions
- Serial numbers of all **MICRO PANEL** you wish to relicense.

Note:

The serial number is printed on the device nameplate and is displayed inside the [System Properties](#) or [License Administrator](#).

10

Index

10.1

Listing

Access authentication	101	Ethernet	25, 33
Access permissions	102	ExtCopy	122, 124
ActiveSync	70	File system.....	21
ActiveX.....	96	Format	77
Alt down	85	FTP server	87
Alt up	85	Gateway	51
Autoexec.bat.....	16	General	7
Autoexec.bmp	19	Hidden OS shell	43
Autoexec.reg	15	Hide OS shell	43
AutoLaunch.....	117	Histogram	58
AutoLaunchBoot	117	Host name	29
Background picture	114	HTML browser	90
Backlight.....	42	Httpd.....	99
Backup	115	HttpdStart	103
Boot up with hidden OS shell.....	43	Idlecount.....	121
Browser	90	Image release.....	57
Calibration.....	61	Info.exe	119
CEHosts	29	INI file (HTML browser).....	93
CF backup.....	115	InputPanel	46
Color depth.....	43	Internet Explorer.....	90
Colors	43	IP address	29, 50
Colors (number)	43	Ipsetup.exe	53
Contrast.....	42	Keyboard	46
CPU usage.....	121	Keyboard layout	64
CTRL button	20	LicAdmin	49
Ctrl down	85	License	49, 136
Ctrl up	85	License points.....	57
CTRL/DOWNLOAD button	20	Licensing	136
Ctrl-Alt-Del	85	LNK file	23
Ctrl-Esc	85	LPR (print)	33
DATE	40	MAC address.....	52
DateTime	40	Manual server.....	74
DEBUG connection	70	Memory.....	57
Delay	18	Memory (RAM)	57
Device.....	58	MiExplorer.exe	90
Device restart.....	118	MiExplorer.ini.....	93
Dim value.....	42	Mini-Keyboard	47
Disable touch	60	MISC	58
Display	42	Name resolution	29
Display - Boot	43	NetBIOS names	29
DNS.....	51	Netsetup.....	56
Domain.....	25, 55	Network.....	50
DOWNLOAD button	20	Network enable	25
Duplex.....	53	Network name	25
Enable touch.....	60	Network test	68
ESC sequences.....	36	NTLM.....	107

10 Index

10.1 Listing

NVSRAM	24	Software keyboard	46
Orientation	43	Speed	53
Orientation (display)	43	Start/Stop WEB server	103
Owner	55	Startup behavior	7
Parallel interface	34	Startup bitmap	43
Password	25, 55	StorageMemorySize	120
PCL	36	Subnet mask	50, 51
Ping	68, 76	System	57
Power down resources are critical	24	System performance	121
Power fail	24	System properties	57
Print	32	System settings	37
Printer enable	33	Temperature	58
ProxyAdmin	97	Temperature histogram	58
RAW (print)	33	TIME	40
Reboot	118	Time zone	41
Recalibrate	61	Touch	60
REG file	112	Touch calibration	61
Regedit	111	Touch disable	85
Registry editor	111	Touch enable	60, 85
Relicensing	136	Touch lock	85
Remote client	81	Touch unlock	85
Remote server	78	TouchDisable	60
Repllog	70	TouchEnable	60
Repllogswitch	71	URL file	95
Request screen refresh	85	User administration	107
Saving	115	User list	102
Screen saver	42	User name	25, 55
Screen settings	42	UserAdmin	107
Serial interface	36	UserList	102
Shortcut	23	Wallpaper	114
Shortcuts	23	WEB server	99
SIP Software Input Panel	46	WINS	52

