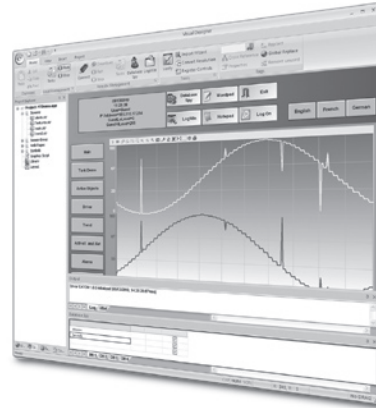


# Visual Designer Driver List



Manufacturer	Equipment	Driver Name	Windows XP/Vista/7	Windows CE	Protocol	M=Master S=Slave	Interface	Supported Cards/Boards	Third-party library
<b>Communication Drivers for Devices</b>									
<b>ABB</b>	CS31	MODBU	*	*	MODBUS RTU/ASCII	M	SERIAL	-	-
	SPA-bus compatible equipment	SPA	*		SPA-bus	S	SERIAL	-	-
<b>ACS</b>	UMacs-D64	ACS	*		Proprietary	M	SERIAL	-	-
<b>Advantech</b>	Series 4000	ADAM	*		Proprietary	M	SERIAL	-	-
	Series 4000/5000	ADAM2	*	*	Proprietary	M	SERIAL	-	-
	Series 4000/5000	ADAM3	*	*	Proprietary	M	SERIAL	-	-
	Series 8000	MPIAD	*	*	MPI Green Cable	M	SERIAL	-	-
	Plug-in Data Acquisition and Control Cards	ASDAQ	*		Proprietary	M	SERIAL		
<b>Schneider (Modicon/Square D/Telemecanique)</b>	AEG Compact PLC*	MODBU	*	*	MODBUS RTU/ASCII	M	SERIAL	-	-
	Modicon 984E*								
	Quantum Family								
	Modicon 984E*Ethernet	MOTCP	*	*	MODBUS RTU/ASCII	M	ETHERNET	Ethernet board	-
	Quantum Ethernet Family								
	MODBUS Plus compatible equipment	MODPL	*		MODBUS Plus	M	-	SA85 board	Board driver (for 95 or NT)
	Modbus Serial Compatible	MODSL	*	*	MODBUS RTU/ASCII	S	SERIAL / ETHERNET	-	-
Symax	SYMAX	*		Proprietary	M	SERIAL	-	-	



Powering Business Worldwide

Manufacturer	Equipment	Driver Name	Windows XP/Vista/7	Windows CE	Protocol	M=Master S=Slave	Interface	Supported Cards/Boards	Third-party library
<b>Communication Drivers for Devices (continued)</b>									
<b>Agilent</b>	Low Cost Data Acquisition	MOLOW	*		Modbus RTU/ASCII	M	SERIAL	-	-
<b>Agri-DataLog</b>	CS950 series		*		EAP	M	SERIAL	-	-
	AC2500 (only short parameter form)	AGRI							
	EC100								
	CPM8								
<b>Alfa</b>	ALFA scale Family 3000	ALFA	*		Proprietary	M	SERIAL	-	-
<b>Allen-Bradley</b>	Family PLC2, PLC5 and SLC500 using AB-1761-NET-ENI gateway Interface	ABENI	*	*	EtherNet/IP (DF1)	M	ETHERNET	-	-
	ControlLogix, MicroLogix	ABCIP	*	*	EtherNet/IP (CIP)	M	ETHERNET	-	-
	Family PLC2		*	*	DF1	M	SERIAL	KE/KF	-
	Family PLC5	ABKE							
	Family SLC500								
	Family PLC2		*	*	DF1	M	ETHERNET	-	-
	Family PLC5	ABTCP							
	Family SLC500								
	Family PLC5	CNS	*	*	Control Net	M	-	Synergetic SMS-CIF104-CNS	Hilscher board drivers
	Family 5000								
	Dataliner DL50 Display	DL50	*		Proprietary	M	SERIAL	-	-
	Family SLC500 (with DeviceNet module)	DEVN	*	*	Device Net	S	-	Hilscher board SMS-ABDT-DNS	CIF32DLL, DLL or CIFCEDLL, DLL
	PLC5 series, PLC2 series, SLC500, MicroLogix 1000/1200/1500	SSTDH	*		DH/DH+	M	-	5136-SD-104 or SST-DHP-PC	SSSD32, DLL and SSDHP32, dll
	PLC2, PLC3 and PLC5 family	STRIO	*		RIO	M/S	-	SST 5136-SD-104 Board	SSSD32.DLL
<b>Altus</b>	AL- 2420	A2420	*		ALNET I	M	PC BOARD	AL2420	AL2420 Programming Software
	AL-3405	ALNE2	*	*	ALNET II	M	ETHERNET	-	-
	Family 1000 / 2000 / 3130	ALNET	*	*	ALNET I	M	SERIAL	-	-
<b>Atos</b>	MPC4004	ATOS	*		3-Apr	M	SERIAL	-	-
<b>Automation Direct</b>	DL PLCs	KOYO	*	*	Proprietary	M	Serial / Ethernet	-	-
<b>AWID</b>	RFID Reader MPR 2010 series	AWID	*		RTIP	M	Ethernet	-	-
<b>Axiom</b>	AX Boards	AXIOM	*		Proprietary	M	-	PC Board	Axiom Driver v2.00 (Library)

Manufacturer	Equipment	Driver Name	Windows XP/Vista/7	Windows CE	Protocol	M=Master S=Slave	Interface	Supported Cards/Boards	Third-party library
<b>Communication Drivers for Devices (continued)</b>									
<b>BarCode</b>	Scanner	SCAN	*		Proprietary	M	SERIAL	-	-
<b>BCM</b>	108x / 1086 / 2085	BCM	*		Proprietary	M	SERIAL	-	-
<b>Beckhoff</b>	TwinCAT PLC	TWCAT	*	*	TCP/IP (Application level - Beckhoff Proprietary)	M	Ethernet	-	TwinCAT ADS Interface PLC
<b>Berkeley process control</b>	BXi controller	BERK	*	*	UDP (Application level - Berkeley Proprietary)	M	Ethernet	-	-
<b>Bosch</b>	CL200 / CL300 CL500	BUEP	*	*	BUEP19E	M	SERIAL	-	-
	PPC	PPCBR	*		Proprietary	M	ETHERNET	-	SCP API
	PPC	VMASC	*	*	VisualMotion	M	SERIAL / ETHERNET	-	-
<b>Cemig</b>	Memp	MEMP	*		Proprietary	M	SERIAL	-	-
<b>Cepel</b>	Sage	SAGE	*		IEC-60870-5-101	S	SERIAL / ETHERNET	-	-
<b>Control Technology Corporation</b>	2200/ 2400/ 2800	CTC	*	*	Proprietary	M	SERIAL	-	-
<b>Crisp Automation</b>	Crisp VAX	Consult Crisp	*		Proprietary	M	SERIAL	-	CrispView
<b>Cutler-Hammer</b>	D50*	CUTL	*	*	Proprietary	M	SERIAL	-	-
	D300								
<b>Cylon Controls</b>	UCU Series and UC32.xx Series	CYLON	*	*	Proprietary	M	ETHERNET	-	-
<b>Davis</b>	Weather Wizard	DAVI	*		Proprietary	M	SERIAL	-	-
<b>Degussa AG</b>	Degussa	DDS	*		Proprietary	M	SERIAL	-	-
<b>Diagnostic Instruments</b>	DI400	RFDI	*	*	Proprietary	M	SERIAL	-	-
<b>Enersafe</b>	LifeLink 48T	LLINK	*	*	Proprietary	M	SERIAL	-	-
<b>Ero Electronic</b>	FMC-Sacmi	SACMI	*		Proprietary	M	SERIAL	-	-
	Lfs	MODBU	*	*	MODBUS RTU/ ASCII	M	SERIAL	-	-
<b>ESB</b>	Vip D3-485	ESB	*		Proprietary	M	SERIAL	-	-
	HV								
	Energy								
<b>EATON</b>	ELC	EATON	*	*	MODBUS RTU/ ASCII	M	SERIAL / ETHERNET	-	-
<b>EuroMap</b>	Gammaflux GLC 2k	EUROM	*	*	Euomap 17	M	SERIAL	-	-
<b>Europen</b>	BarCode Scanner	SCAN	*		Proprietary	M	SERIAL	-	-
	Lay-Out Printer	EURO	*		Proprietary	M	SERIAL	-	-
<b>EXFO</b>	WA-5900	EXFO	*		Proprietary	M	SERIAL	-	-
<b>FATEK</b>	FATEK PLC	FATEK	*	*	FACON-PLC	M	SERIAL / ETHERNET	-	-
<b>Fascitec</b>	MFC	MFC	*		Proprietary	M	SERIAL	-	-
<b>Fertron</b>	Fertron PLC	FERT	*	*	Proprietary	M	SERIAL	-	-
<b>Flowtronics</b>	Flowtronics HMI	RLC		*	Proprietary	M	-	ARM-GPIO Boards	RLC_ARM.DLL

Manufacturer	Equipment	Driver Name	Windows XP/ Vista/7	Windows CE	Protocol	M=Master S=Slave	Interface	Supported Cards/ Boards	Third-party library
<b>Communication Drivers for Devices (continued)</b>									
<b>Fluke</b>	2640A / 2645A / 2680A / 2686A	FLK	*		Proprietary	M	ETHERNET	Ethernet Board	Fluke Toolbox Library
<b>Foxboro</b>	743V / 743C / 761C / 762C	FOXBO	*		Proprietary	M	SERIAL	-	-
<b>Galil</b>	DMC Series	MCTRL	*	*	Proprietary	M	SERIAL / ETHERNET	-	-
<b>Gammaflux</b>	TTC Series	GFLUX	*	*	Proprietary	M	SERIAL	-	-
<b>Garmin</b>	GPS V	GARMI	*	*	P000 / L001 / A010	M	SERIAL	-	-
<b>GE-Fanuc</b>	Series 90	SRTF	*	*	SRTF	M	ETHERNET	-	-
		FANUC	*	*	SNP	M	SERIAL	-	-
	90/30 CPU 341*	FATCP	*		TCP/IP	M	ETHERNET	-	Host Comm. Software Toolkit
<b>Gefran</b>	Adamelo	ADML	*		Proprietary	M	SERIAL	-	-
	Controllers	GEFR	*		Proprietary	M	SERIAL	-	-
<b>HI Tecnologia</b>	Mix 600 Controller	HI	*		SCP-HI	M	SERIAL	-	-
<b>Hitachi</b>	H-Series	HITCH	*	*	Proprietary	M	SERIAL	-	-
	EM-II Series	HITCE	*		Proprietary	M	SERIAL	-	-
	EB-Series				(SNP)	M			
<b>Idea Automazione</b>	Ocrim	LAMIN	*		Proprietary	M	SERIAL	-	-
<b>IDEC</b>	MicroSmart PLC CPU Module	IDEC	*	*	Proprietary	M	SERIAL	-	-
<b>Jetter</b>	PASE-E+ Mikro Delta, Delta-CPU2 Nano-A, Nano-B, Nano-C, Nano-D PC-PPLC JetControl24x, JetControl64x	JETTE	*		Serial: PCOM3 and PCOM5 JETWay PC-PPLC TCP/IP: JetIP IP, PCOM6	M	Serial, Ethernet, JetWay, PC-PPLC board	Serial, Ethernet, JETWay, PC-PPLC board	Jet32.dll
<b>Johnson Control</b>	N2	N2JC	*	*	N2	M	SERIAL	-	-
<b>Keb</b>	Frequency Inverters compatible	KEBCO	*	*	Proprietary	M	SERIAL	-	-
<b>Keithley</b>	Model 2700	KTHLY	*	*	Proprietary	M	ETHERNET	-	-
<b>Klockner-Moeller</b>	PS316 / PS32, PS4-201-MM1 LPC42	KLOCK	*		SUCOM 1	M	SERIAL	-	-
<b>Lamix</b>	Display LAMIX	LAMIX	*		Proprietary	M	SERIAL	-	-
<b>Lauer Gmbh</b>	PCS Light	LAUER	*		Lauer Standard	M	SERIAL	-	-
<b>Leybold Inficom</b>	Vacuum Gauges devices	GAUGE	*		Proprietary	M	SERIAL	-	-
<b>Mastushita</b>	FP	MATSU	*		Proprietary	M	SERIAL	-	-
<b>Panasonic</b>	FP	MATSU	*		Proprietary	M	SERIAL	-	-
<b>Messung</b>	PLC Messung	MESSU	*		Proprietary	M	SERIAL	-	-
<b>Microblau</b>	TD3000	MBLAU	*	*	Proprietary	M	SERIAL	-	-

Manufacturer	Equipment	Driver Name	Windows XP/Vista/7	Windows CE	Protocol	M=Master S=Slave	Interface	Supported Cards/Boards	Third-party library
<b>Communication Drivers for Devices (continued)</b>									
<b>Mitsubishi</b>	FX-232AW	MITSU	*	*	Proprietary	M	SERIAL / ETHERNET	-	-
	MELSEC – A series	MITSA	*	*	Proprietary	M	SERIAL	-	-
	QnA and Q Series	MELSE	*	*	MELSEC	M	ETHERNET	-	-
<b>Motoman</b>	XRC	XRC	*	*	BSC compliant	S	SERIAL	-	-
	XRC	XRCM	*	*	BSC compliant	M	SERIAL	-	-
<b>National Instruments</b>	GPIB	GPIBN	*		IEE 488.1	M	-	GPIB Board	-
<b>Novus</b>	N1100 / N1550 N2000	NOVUS	*		MODBUS RTU	M	SERIAL	-	-
	Field Logger								
<b>Omron</b>	C-series Rack PCs		*	*	OMPLC	M	SERIAL	-	-
	Sysmac way	OMPLC							
	Host link units								
	Sysmac C200H*								
	V720S-HMF01 RFID	HMF01	*	*	Proprietary	M	SERIAL	CF CARD TYPE RFID	-
	Series CS1	OMETH	*	*	FINS / CS1 and CV	M	SERIAL / ETHERNET	-	-
	E5ZN Temperature Controller	COWAF	*	*	Proprietary	M	SERIAL	-	-
<b>Online Development</b>	EZ-1131 interface	EZRTE		*	Proprietary	M	SERIAL	-	-
<b>OPTO22</b>	Analog/Digital Boards	OPTO	*		OPTOMUX	M	SERIAL	-	-
	Analog/Digital Boards	MISTC	*	*	MISTIC	M	SERIAL	-	-
	Snap Series	OPMMP	*	*	OPTO-MMP	M	Ethernet	-	-
<b>Ordicom R &amp; D</b>	Reader DSC v5, v6 and v9	DSC	*	*	Proprietary	M	SERIAL	-	-
<b>Phoenix</b>	Interbus Compatible	IBUS	*		-	M	INTERBUS	InterBus Phoenix Board	Phonex Interbus Library
<b>Pilz</b>	PNOZmulti Safety System	PNOZ	*	*	Proprietary	M	SERIAL	-	-
<b>Presys</b>	DMY2030, TY2090, DCY2050-2051	MODBU	*	*	MODBUS	M	SERIAL	-	-
<b>Pro-Lite</b>	PL-M series D (displays)	PLM	*		Proprietary	M	SERIAL	-	-
<b>Rohm</b>	Display	ROHM	*		Proprietary	M	SERIAL	-	-
<b>RTP</b>	RTP 2000 / RTP 2300	RTP	*		Proprietary	M	ETHERNET	-	-
<b>Sabroe</b>	COMSAB II	SABR	*		Proprietary	M	SERIAL	-	-
<b>Saia</b>	Saia PCD	SAIA	*		P8 Protocol	M	SERIAL	-	-
<b>Sartorio</b>	Sartorio Scale	SART	*		Proprietary	M	SERIAL	-	-
<b>Satchwell Control System</b>	IAC200/400 & IAC600 Family	SATCH	*	*	Proprietary (SatchNet)	M	SERIAL	-	-
<b>Schenck</b>	Disomat C	DISOM	*		Proprietary	M	SERIAL	-	-

Manufacturer	Equipment	Driver Name	Windows XP/Vista/7	Windows CE	Protocol	M=Master S=Slave	Interface	Supported Cards/Boards	Third-party library
<b>Communication Drivers for Devices (continued)</b>									
<b>SEW</b>	MOVITRAC31	MTRAC	*		Proprietary	M	SERIAL	-	-
<b>Siemens</b>	S5 (PG port)	AS511	*	*	Proprietary	M	SERIAL	-	-
	S5 / S7 3964R	RK512	*		RK512	M	SERIAL		-
	S7-300 / S7-400(MPI)	SIEME	*	*	MPI	M	SERIAL	PC Adapter (MPI)	-
	S7-200 / S7-300 / S7-400	SIETH	*	*	MPI	M	ETHERNET	Ethernet Board	-
	S7-200 (PPI)	SIPPI	*	*	PPI	M	SERIAL	PC Adapter (PPI)	-
	S7 (MPI)	MPI	*		MPI	M	MPI	MPI board / MPI cable	Prodav Library Software
	S7 Family (MPI compatible)	MPMPI	*		MPI	M	MPI	MP370 HMIs	MP370 embedded MPI library
	Profibus DP Compatible	HDPS	*	*	PROFIBUS DP	S	-	Hilscher / Synergetic Board	Hilscher / Synergetic Board Drivers
	Profibus DP Compatible	HILDP	*	*	PROFIBUS DP	M	-	Hilscher / Synergetic Board	Hilscher / Synergetic board drivers
	Profibus FMS Compatible	SL2A2	*		Proprietary	M	-	CP5412/A2	Board driver and library
SFMS		*		Proprietary	M	-	Softing ProfiBoard	Board driver and library	
Profibus DP Compatible	SL2DP	*		PROFIBUS DP	M		CP5412/A2	Simantic Net	
MXT521	ARAC	*		Proprietary	M	SERIAL	-	-	
TI PLC	TI500	*	*	TDB	M	SERIAL	-	-	
S7-300 / S7-400 (MPI)	NLMPI	*	*	Proprietary	M	ETHERNET	Hilscher NetLink-MPI cable	-	
<b>Sistem</b>	CP-3000	SIST	*		Proprietary	M	SERIAL	-	-
		SISTE	*		Proprietary	M	SERIAL	-	-
<b>Smar</b>	CD600	CD600	*		Proprietary	M	SERIAL	ICS2.0	-
<b>SoftPLC</b>	SoftPLC PC Based Control	ABKE	*	*	DF1	M	SERIAL	-	-
		ABTCP	*	*	DF1	M	ETHERNET	-	-
<b>Solidyne</b>	IZAC/Clipper Network Protocol Compatible	IZCL	*		IZAC/Clipper Network	M	SERIAL / ETHERNET	Ethernet Board	-
<b>SPI (Society of the Plastics Industry)</b>	Injection Molding Equipment	SPIIM	*		SPI	M	SERIAL	-	-
<b>Therma</b>	TH2131	THERM	*		Proprietary	M	SERIAL	-	-
<b>Toledo</b>	Model 9091	T9091	*		Proprietary	M	SERIAL	-	-
	ToIFlux 9300	TFLUX	*		TLP2	M	SERIAL	-	-
<b>Toshiba</b>	Prosec-T2E	PROT1	*	*	Computer Link	M	SERIAL	-	-
<b>Triconex</b>	Tricon Series	TSAA	*	*	TSAA	M	ETHERNET / UDP-IP	-	-

Manufacturer	Equipment	Driver Name	Windows XP/Vista/7	Windows CE	Protocol	M=Master S=Slave	Interface	Supported Cards/Boards	Third-party library
<b>Communication Drivers for Devices (continued)</b>									
<b>Uni-Telway</b>	TSX	UNITE	*	*	Proprietary	S	SERIAL	-	-
<b>Usiminas</b>	SISP	SISP	*		Proprietary	M	SERIAL	-	-
<b>Usina Santa Elisa</b>	Blender	USE	*		Proprietary	M	SERIAL	-	-
<b>Villares</b>	Dedicated equipment	VILL	*		Proprietary	M	ETHERNET	-	-
<b>VIPA</b>	VIPA and Siemens S7-300/400 PLCs	VPCE		*	MPI / Industrial Ethernet	M	SERIAL / Ethernet	-	S7COMM library
<b>Watlow Controls</b>	Series 981 / 984	WA982	*		Proprietary	M	SERIAL	-	-
<b>West</b>	6110 Temp. Contr.	WEST	*		Proprietary	M	SERIAL	-	-
<b>Weg</b>	A500	A500	*		Proprietary	M	SERIAL	-	-
	CFW	CFW	*		Proprietary	M	SERIAL	-	-
	CPWA250	WA250	*		Proprietary	M	SERIAL	-	-
	TP02	WTPO2	*		Proprietary	M	SERIAL	-	-
	TP11	WEGTP	*		Proprietary	M	SERIAL	-	-
<b>Yaskawa</b>	Legend Series	MCTRL	*	*	Proprietary	M	SERIAL / ETHERNET	-	-
<b>Yokogawa</b>	UT35	YU35	*		PC Link Comm.	M	SERIAL	-	-
	HR2500E	YOKOG	*		Proprietary	M	SERIAL	-	-
	UT750,UP750, UT550,UT520, UP550,UT350, UT320,UM350, UM330,UP350	YUPL	*		PC Link Comm.	M	SERIAL	-	-
	YS100	YS100	*		Proprietary	M	SERIAL	-	-
	F3LC11, F3LC12, F3LE01, F3GB01, F3SP (05, 21, 25, 28, 35, 38, 53, 58)	YOF3	*		Proprietary	M	SERIAL / ETHERNET	-	-
	MX100	YOMX	*		Proprietary	M	ETHERNET	Ethernet Board	MX100 API
-	-	TXRX	*	*	Standard ACSII	M	SERIAL / ETHERNET	-	-

Manufacturer	Equipment	Driver Name	Windows XP/Vista/7	Windows CE	Protocol	M=Master S=Slave	Interface	Supported Cards/Boards	Third-party library
<b>Communication Drivers for PC Based Controls</b>									
<b>Altersys</b>	Virgo RunTime	VIRGO		*	Proprietary	M	-	-	-
<b>FlashPoint Automation</b>	Flash Run-Time	FSPACE		*	Proprietary	M	-	-	-
	FlashPoint ControlView	FPACV	*	*	Proprietary	M	-	-	-
<b>CJ International</b>	IsaGRAF (v3.0)	ISAGR	*		Proprietary	M	DDE	-	-
	First IsaGRAF (v3.3)	ISAGR	*		Proprietary	M	DDE	-	-
<b>Nematron</b>	OpenControl Monitor	OC	*		Proprietary	M	-	-	-
<b>SixNet</b>	SixNet	SNET	*		Proprietary	M	-	-	-
<b>SteepleChase</b>	SteepleChase	VLC	*		Proprietary	M	-	-	-
<b>Straton</b>	Straton Control Unlimited and SoftNC	STRAT	*		Proprietary	M	-	-	-
<b>Think&amp;Do</b>	Think&Do	TND	*	*	Proprietary	M	-	-	-

<b>Communication Drivers for Standard Protocols</b>									
<b>Any compatible</b>	BACNet Compatible	BACNE	*	*	BACNet	M	ETHERNET	-	-
<b>Any compatible</b>	CAN/CANOpen CiA 301	CAN	*	*	CAN/CANOpen	M/S	CAN	Peak,	-
	Specification Compatible							Advantech, Hilscher	
<b>Interbus Compatible</b>	Interbus Compatible	IBUS	*		-	M	INTERBUS	InterBus Phoenix Board	Phonex Interbus Library
<b>Any compatible</b>	MODBUS TCP Compatible	MOTCP	*	*	MODBUS RTU/ASCII	M	ETHERNET	Ethernet board	-
<b>Any compatible</b>	MODBUS SERIAL Compatible	MODSL	*	*	MODBUS RTU/ASCII	S	SERIAL / ETHERNET	-	-
<b>Any compatible</b>	MODBUS SERIAL Compatible	MODBU	*	*	MODBUS RTU/ASCII	M	SERIAL	-	-
<b>Any compatible</b>	TAP Compatible	PAGER	*	*	TAP	M	SERIAL	External Modem or Modem Card	-
<b>Any compatible</b>	Serial Output of User E Compatible	SSUE	*		Serial Output of User E	M	SERIAL	-	-

**Eaton Corporation**  
 Electrical Sector  
 1000 Cherrington Parkway  
 Moon Township, PA 15108  
 United States  
 877-ETN-CARE (877-386-2273)  
 Eaton.com

© 2011 Eaton Corporation  
 All Rights Reserved  
 Printed in USA  
 Publication No. TD04803001E / TN  
 February 2011

Eaton is a registered trademark of Eaton Corporation.

All other trademarks are property of their respective owners.

