

## Power Xpert *inControl* Quick Start Guide

### Step 1 – Installation

- Download the Power Xpert *inControl* Software with the One Installer found on the [www.eaton.com/dg1](http://www.eaton.com/dg1) software tab.

### Step 2 – Connecting

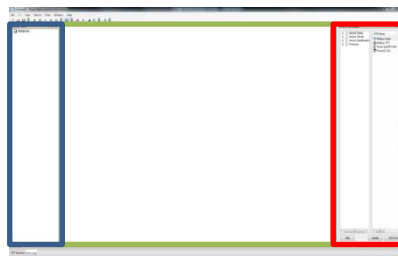


**Keypad Port:** Using the PowerXL DG1 programming cable (Part Number DXG-CBL-PCCABLE) connect from your computer USB port to the keypad port.

**Ethernet Port:** Using any standard CAT5 Ethernet cable connect from your computer to the RJ45 Ethernet Port. Note: Your drive IP address will have to be set up in the drive keypad parameters (Group P20.3) to match the IP address structure in your computer before connecting.

### Step 3 – Configuring Connection

- Open Power Xpert *inControl* and double click on either the Modbus Serial (Keypad Port) or Modbus TCP (Ethernet Port) on the right side in the *Device Catalog* (red). Once complete, the device DTM should then show up in the *Network View* (blue).



- If the Modbus Serial (Keypad Port) is selected the *Communication Settings* window will come up which should be set to the following values.

Configuration Parameter	Setting
Port	Need to check in windows device properties for port USB to RS485 adapter was installed at.
Parity*	Even
Data Bits*	8
Baud Rate*	38400
Stop Bits*	1
Transmission Mode*	RTU



Powering Business Worldwide

## Step 4 – Loading Device

- In the *Device Catalog* (red), double click on the PowerXL DG1 drive, it will be added to the *Network View* in (blue) under the communication DTM.
- Next the *Set Address* window will appear and the communication address needs to be set based on the below.

- Modbus Serial (Keypad Port)

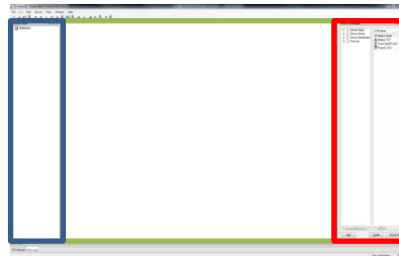
Configuration Parameter	Setting
Slave Address	18

- Modbus TCP (Ethernet Port)

Configuration Parameter	Setting
IP Address*	XXX.XXX.XXX.XXX

\* The IP address should be set via the keypad on the drive.

- With the PowerXL DG1 drive selected, click the *Go Online* button. Then double click on the drive to load device parameters, these will be shown in the main window (green).



- The PowerXL DG1 is now ready to be configured by the Power Xpert *inControl* software.

## Additional Help

In the US or Canada: please contact the Technical Resource Center at 1-877-ETN-CARE or 1-877-326-2273 option 2, option 6.

All other supporting documentation is located on the Eaton web site at [www.eaton.com/Drives](http://www.eaton.com/Drives)

