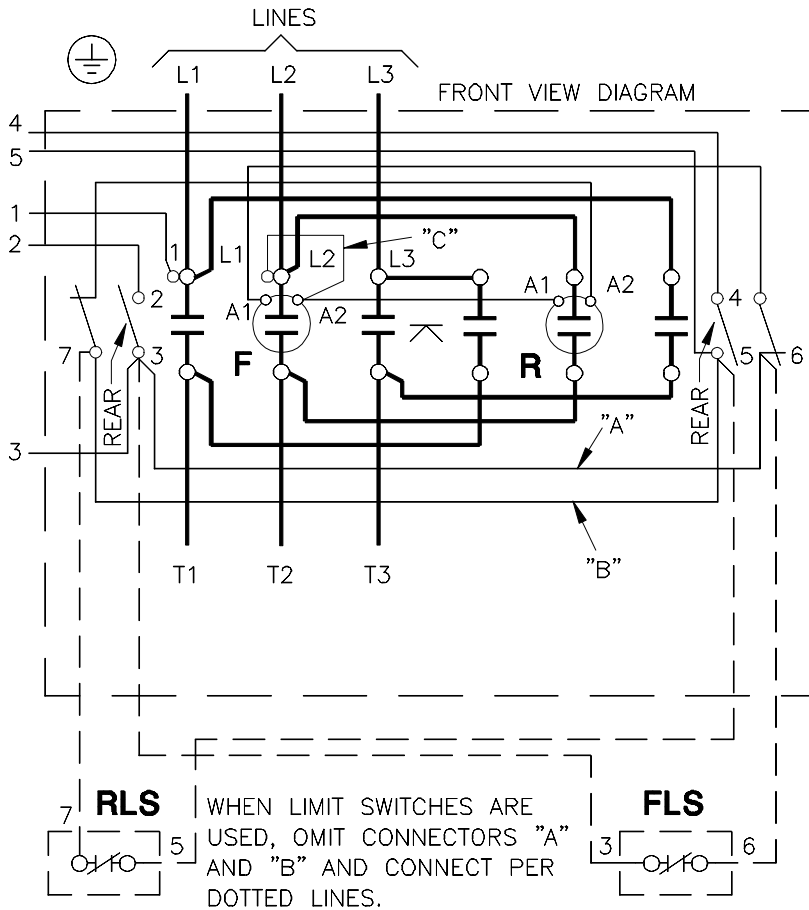
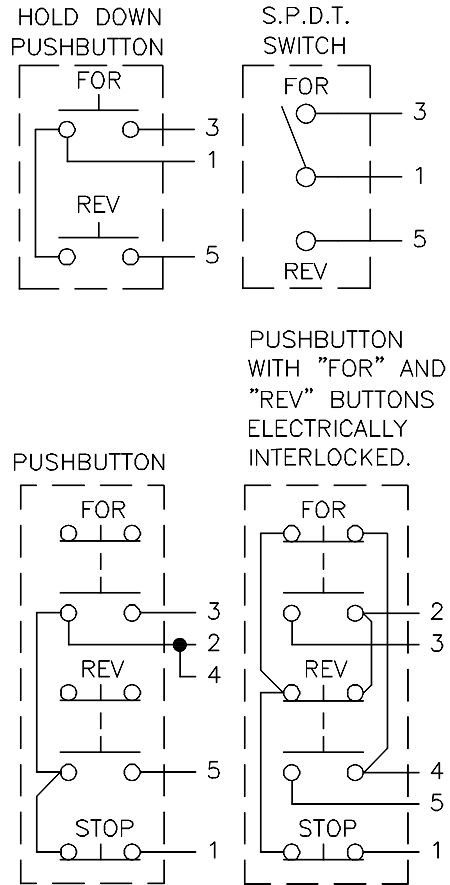
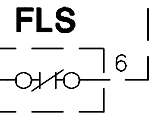


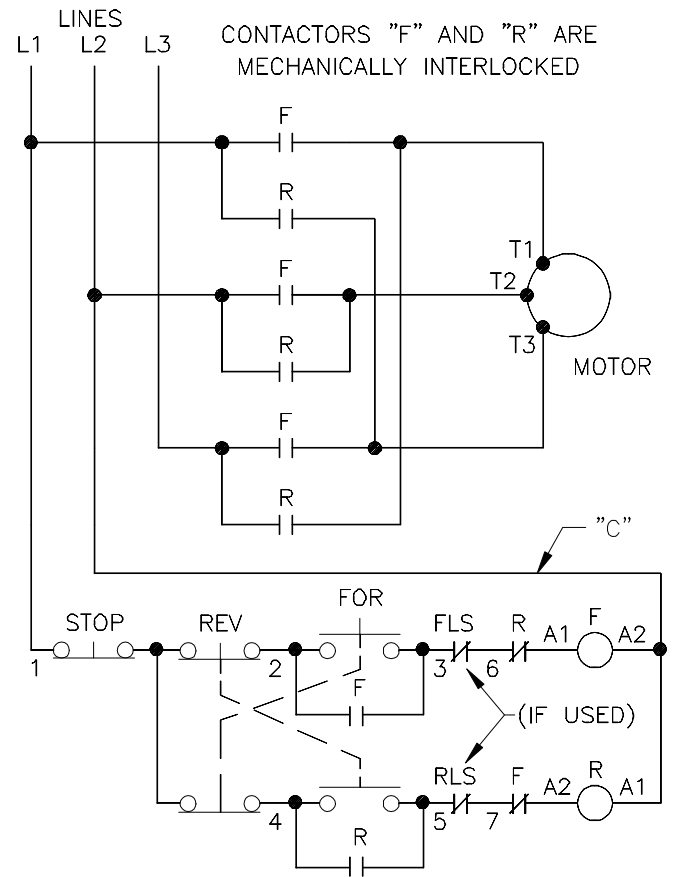
REMOTE PILOT DEVICES



RLS WHEN LIMIT SWITCHES ARE USED, OMIT CONNECTORS "A" AND "B" AND CONNECT PER DOTTED LINES.

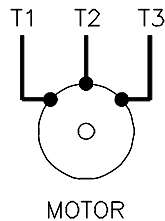


ELEMENTARY DIAGRAM



SEPARATE CONTROL

REMOVE WIRE "C" WHEN IT IS SUPPLIED. CONNECT SEPARATE CONTROL LINES TO THE NO.1 TERMINAL ON THE REMOTE PILOT DEVICE AND THE "A2" TERMINAL ON THE "F" CONTACTOR COIL.



CONNECTIONS FOR SIZE 4, THREE PHASE, FULL VOLTAGE, MAGNETIC REVERSING CONTACTOR.								
APPROVAL	WIRING CHANGED		DRAWN BY	3-30-88	ENGR. APP.	J.REYNOLDS	5/11/88	
A	J.H.J.	NO	NO	CHECKED BY		SUPR. APP.	F.R.BONESS	6-23-88
B				SUP. NO.				
C				SUP. BY NO.				
D				PANEL NO.				
E				BUL. NO.				
F				GROUP NO.				
G				ORDER NO.	DV30-4980-10			

EATON

256653 D2

COMPUTER GENERATED TRACING - .DWG

THE INFORMATION ON THIS DRAWING IS THE PROPERTY OF EATON CORPORATION. IT IS NOT TO BE REPRODUCED, USED OR DISCLOSED EXCEPT FOR THE PURPOSE FOR WHICH FURNISHED.