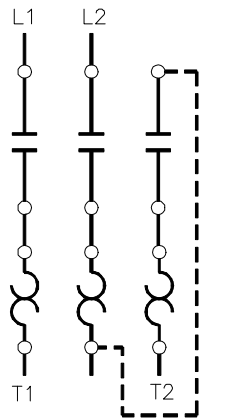
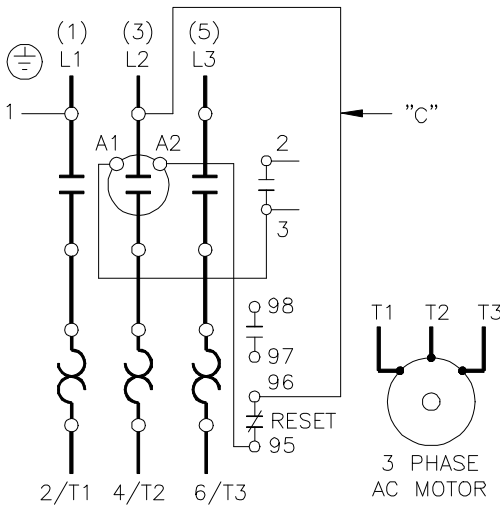
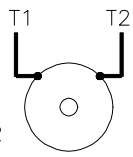


THE INFORMATION ON THIS DRAWING IS THE PROPERTY OF EATON CORPORATION, IS DISCLOSED IN CONFIDENCE AND IS NOT TO BE REPRODUCED, USED OR DISCLOSED EXCEPT FOR THE PURPOSE FOR WHICH FURNISHED.



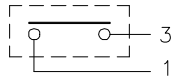
FIELD CONVERSION TO 1 PHASE - ADD DOTTED CONNECTION.



1 PHASE AC MOTOR

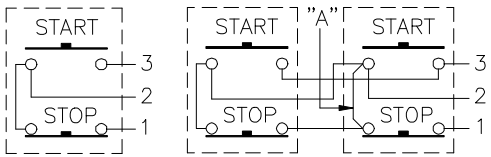
REMOTE PILOT DEVICES

2 WIRE CONTROL



NOT FOR USE WITH AUTO RESET OL RELAYS.

3 WIRE CONTROL



SEPARATE CONTROL

REMOVE WIRE "C" WHEN IT IS SUPPLIED. CONNECT SEPARATE CONTROL LINES TO THE NO.1 TERMINAL ON THE REMOTE PILOT DEVICE AND THE TERMINAL 96 ON THE OVERLOAD RELAY.

NEMA SIZE 1, 1 1/2, AND 2 NON-REVERSING STARTERS.

	APPROVAL	WIRING CHANGED INTERNAL EXTERNAL	DRAWN BY M. STEHLING	5-7-86	ENGR. APP. E.M.WAGNER	5-14-86
A	E.W. M.F.S. 9-30-86	YES NO	CHECKED BY		SUPR. APP. F.R.BONESS	5-22-86
B	J.H.J. 4-15-94	NO NO	SUP. NO.			
C			SUP. BY NO.			
D			PANEL NO.			
E			BUL. NO.			
F			GROUP NO.			
G			ORDER NO. DV13-1700-10			



255776 D1

COMPUTER GENERATED TRACING - .DWG