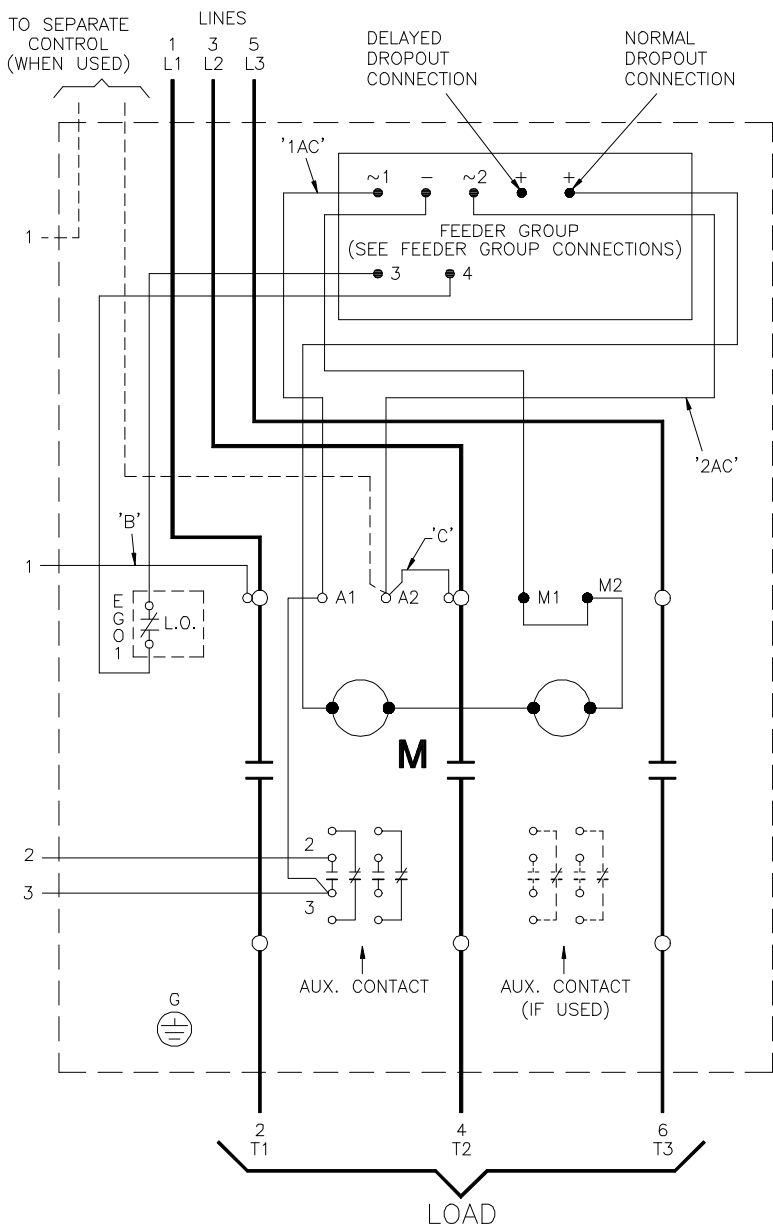


# CONNECTIONS FOR CONTACTOR

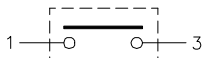
# CONNECTIONS FOR REMOTE CONTROL STATION

# ELEMENTARY DIAGRAM

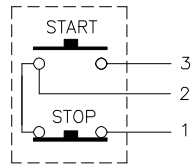
**FIG.1** FRONT VIEW DIAGRAM



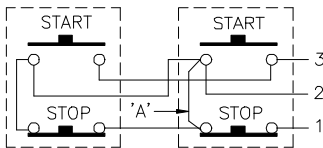
## 2 WIRE CONTROL



## 3 WIRE CONTROL



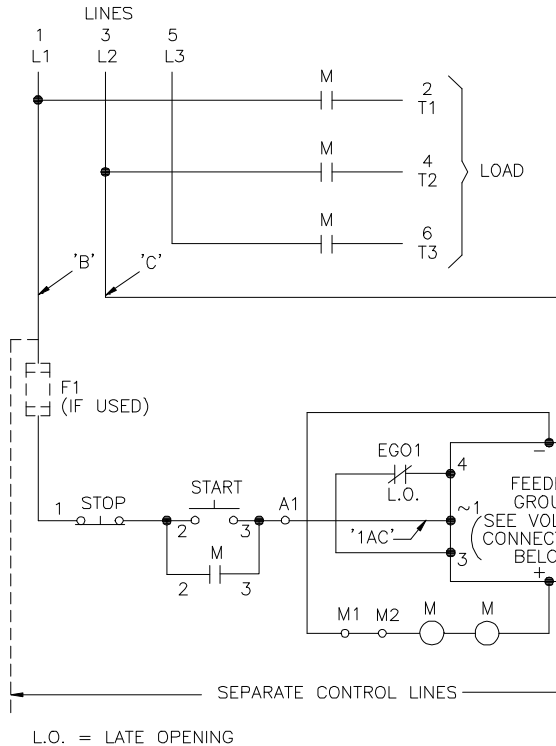
WHEN MORE THAN ONE PUSHBUTTON STATION IS USED, OMIT CONNECTOR 'A' AND CONNECT PER SKETCH BELOW.



## SEPARATE CONTROL

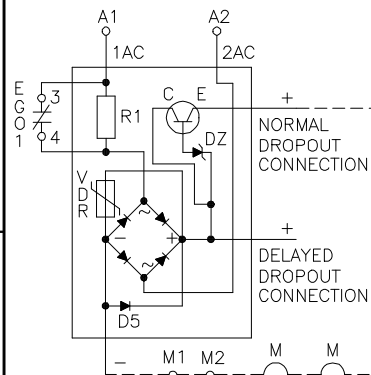
REMOVE WIRES 'B' AND 'C' AND CONNECT SEPARATE CONTROL LINES TO THE NO.1 TERMINAL ON THE REMOTE PILOT DEVICE AND TO THE 'A2' TERMINAL.

NOTE: SEPARATE CONTROL VOLTAGE MUST AGREE WITH VOLTAGE RATINGS MARKED ON MAGNET COILS AND FEEDER GROUP FOR PROPER OPERATION.



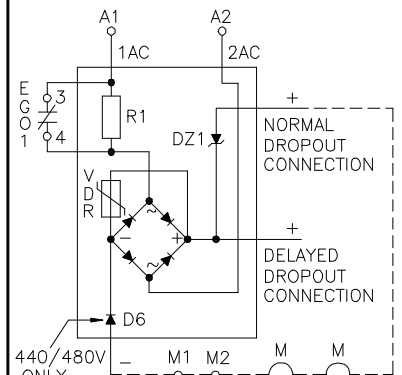
## FEEDER GROUP CONNECTIONS

110-120V. 50/60 Hz



NORMAL DROPOUT = 150-200ms  
DELAYED DROPOUT = 500-1000ms

220-600V. 50/60 Hz



440/480V ONLY  
NORMAL DROPOUT = 150-200ms  
DELAYED DROPOUT = 500-1000ms

### CONNECTIONS FOR FREEDOM SIZE 6 SERIES NON-REVERSING CONTACTORS - (GH57)

APPROVAL	WIRING CHANGED INTERNAL TERMINAL	DRAWN BY	J.H. JOHNSON	12-28-94	ENGR. APP.
A		CHECKED BY			SUPR. APP.
B		SUP. NO.			
C		SUP. BY NO.			
D		PANEL NO.			
E		BUL. NO.			
F		GROUP NO.			
G		ORDER NO.	DV43-6856-10		

**EATON**

# 260613 D3

COMPUTER GENERATED TRACING -- .DWG

FILE IN H-65