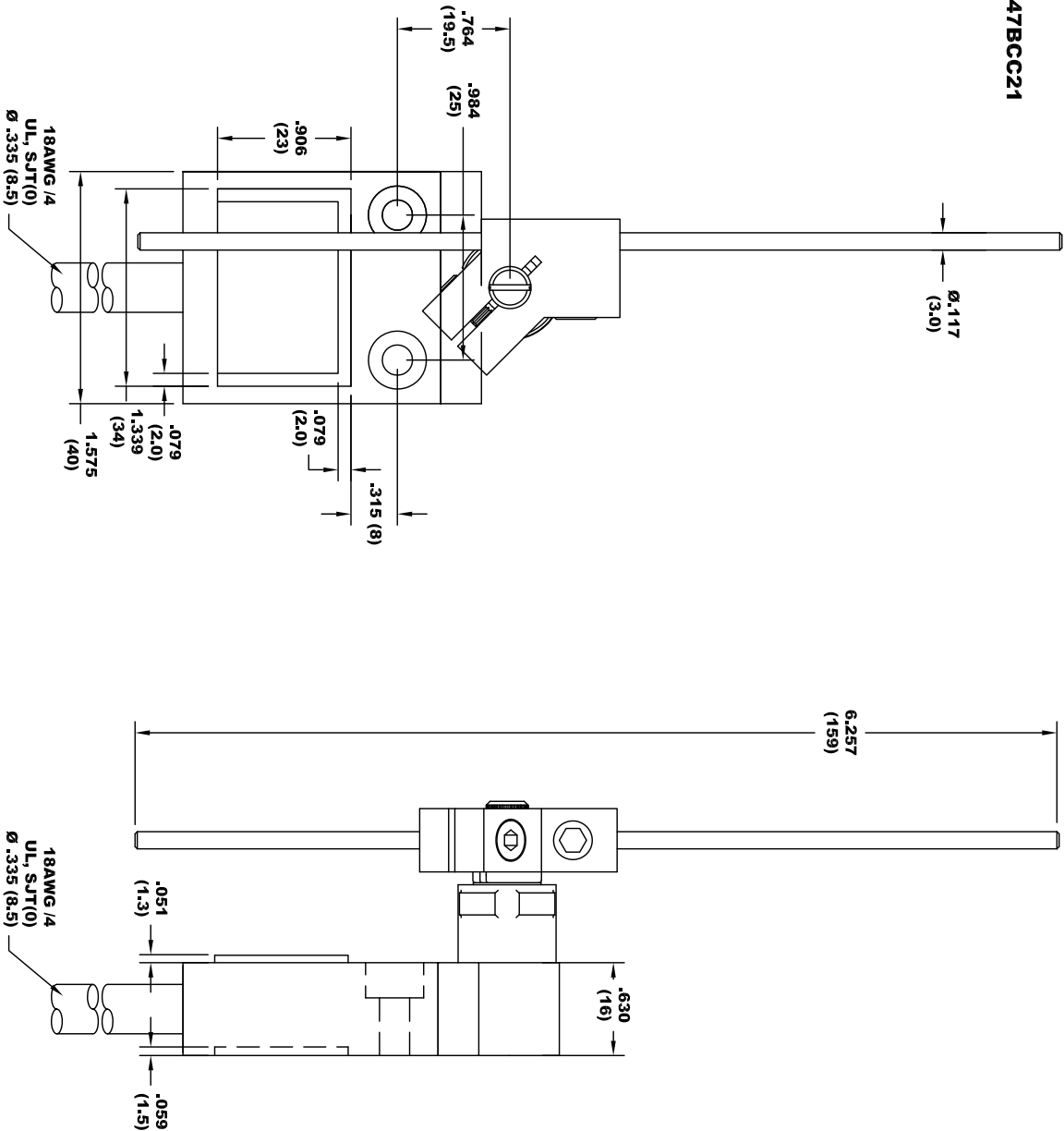



E47BCC21



-	-	-	-	-	-	<p>PROPRIETARY NOTICE</p> <p>NOTICE TO ALL PERSONS RECEIVING THIS INFORMATION:</p> <p>THE INFORMATION DISCLOSED HEREIN IS THE PROPERTY OF EATON CORPORATION AND SHALL NOT BE REPRODUCED, DISCLOSED OR USED IN ANY MANNER WITHOUT THE WRITTEN CONSENT OF EATON CORPORATION. COPYRIGHT EATON CORPORATION. ALL RIGHTS RESERVED.</p> <p>THIRD ANGLE PROJECTION</p> <div></div>	UNLESS OTHERWISE SPECIFIED DIMENSIONS ARE IN INCHES TOLERANCES ARE:		DWN	H. WEYMOUTH	<p>EATON</p> <p>6500 HARBOUR HT'S PKWY SUITE 320 WA 98275 (425) 349-5240</p> <p>E47 Compact Pre-Wired Pin Plunger Limit Switch</p> <p>SIZE <small>AUTOCAD</small> DRAWING NO. REV</p>
-	-	-	-	-	-		XX ± .01 XXX ± .005 .XXX ± .001	ANGULAR: ∠ ± 30°	CHK	---	
-	-	-	-	-	-				ENG	---	
-	-	-	-	-	-				MFG	---	
-	-	-	-	-	-				OTHER	---	
-	-	-	-	-	-				OTHER	---	
-	-	-	-	-	-				SCALE:	SHT 1 OF 1	
-	-	-	-	-	-				SIZE	A	
-	-	-	-	-	-				DRAWING NO.	90-26808-019	
-	-	-	-	-	-				REV	01	