

# TechBench

Built for durability, designed for flexibility



Eaton® sets a higher standard for engineering, manufacturing, test and assembly environments with TechBench and TechOrganizer. TechBench, a solidly constructed workbench system, and TechOrganizer, a fully-welded frame system, work together to organize technology, tools and test equipment above and below the worksurface.

TechBench provides the strength and durability required in today's lab environments. Optional components provide highly efficient space management and storage solutions for instrumentation and supplies. Technology integration is addressed with flexible and convenient solutions for flat panel displays, computers, keyboards, power, data and other services. TechBench is height configurable from desk to workbench height and is available in multiple widths and depths. Multiple worksurface materials are also available.

## Features and benefits

- Modular and scalable design allows for highly customizable configurations
- High density storage components leverage vertical space above and below the worksurface
- Horizontal and vertical cable management options keep cables contained and serviceable
- The solidly constructed TechBench offers a limited lifetime warranty



*Powering Business Worldwide*

# How to configure a TechBench

## Part number breakdown

WTB \_\_\_ - \_\_\_ - \_\_\_ - \_\_\_ - \_\_\_ WTB Size - Organizer Storage Casters - Steel Color Laminate Color

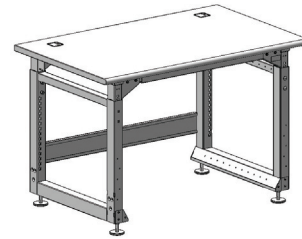
### Step 1:

#### Choose a bench size

48"W (WTB48), 60"W (WTB60)  
or 72"W (WTB72)

#### TechBench features:

- Height adjustable steel frame
  - 29" to 35" adjustment range
- 2,000 lbs. weight capacity
- 30" deep worksurface



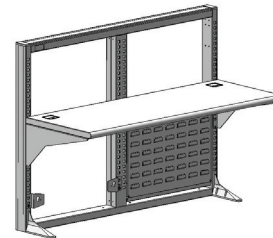
### Step 2:

#### Add a TechOrganizer if desired

X – No TechOrganizer  
B – TechOrganizer

#### TechOrganizer features:

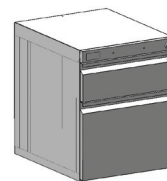
- 36" high frame; 400 lbs. weight capacity
- 18" deep shelf; 150 lbs. weight capacity
- Bin board for hook on bins
- PDU mounting brackets



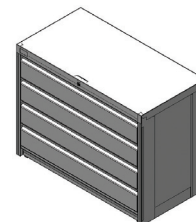
### Step 3:

#### Choose an under-worksurface storage option

X – No storage  
P – Pedestal  
C – Optimedia



Pedestal

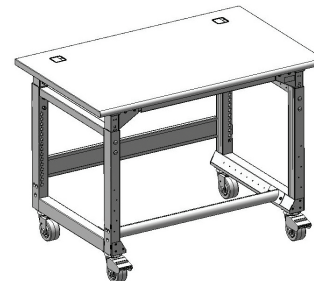


Optimedia

### Step 4:

#### Choose whether you want casters

X – No casters  
C – Casters



### Step 5:

#### Choose your steel color

M – Black  
F – NuGrey



M



F

### Step 6:

#### Choose your laminate color.

K – White Matrix  
G – Charcoal Matrix  
E – ESD Grey



K



G



E

# TechBench configurations

Simply select the bench you want and add the color choice for steel and laminate from the configuration instructions on the previous page.



**TechBench: WTB48-BPC-MK**  
**Light Option: WLT48**

## 48" TECHBENCH OPTIONS

Part number	Description
WTB48-XXX-__	48" TechBench Only
WTB48-BXX-__	48" TechBench with TechOrganizer
WTB48-XPX-__	48" TechBench with pedestal
WTB48-BPX-__	48" TechBench with pedestal and TechOrganizer
WTB48-XCX-__	48" TechBench with Optimedia
WTB48-BCX-__	48" TechBench with Optimedia and TechOrganizer
WTB48-XXC-__	48" TechBench with casters
WTB48-BXC-__	48" TechBench with TechOrganizer and casters
WTB48-XPC-__	48" TechBench with pedestal and casters
WTB48-BPC-__	48" TechBench with pedestal, TechOrganizer and casters
Optional accessories	
ePBZ75	Power Distribution Unit – 120V, 15-amp, 24"H
WLT48	48" TechBench light



**TechBench: WTB60-BPC-ME**  
**Light Option: WLT60**

## 60" TECHBENCH OPTIONS

Part number	Description
WTB60-XXX-__	60" TechBench Only
WTB60-BXX-__	60" TechBench with TechOrganizer
WTB60-XPX-__	60" TechBench with pedestal
WTB60-BPX-__	60" TechBench with pedestal and TechOrganizer
WTB60-XCX-__	60" TechBench with Optimedia
WTB60-BCX-__	60" TechBench with Optimedia and TechOrganizer
WTB60-XXC-__	60" TechBench with casters
WTB60-BXC-__	60" TechBench with TechOrganizer and casters
WTB60-XPC-__	60" TechBench with pedestal and casters
WTB60-BPC-__	60" TechBench with pedestal, TechOrganizer and casters
Optional accessories	
ePBZ77	Power Distribution Unit – 120V, 20-amp, 60"H
WLT60	60" TechBench light



**TechBench: WTB72-BPC-FG**  
**Light Option: WLT72**

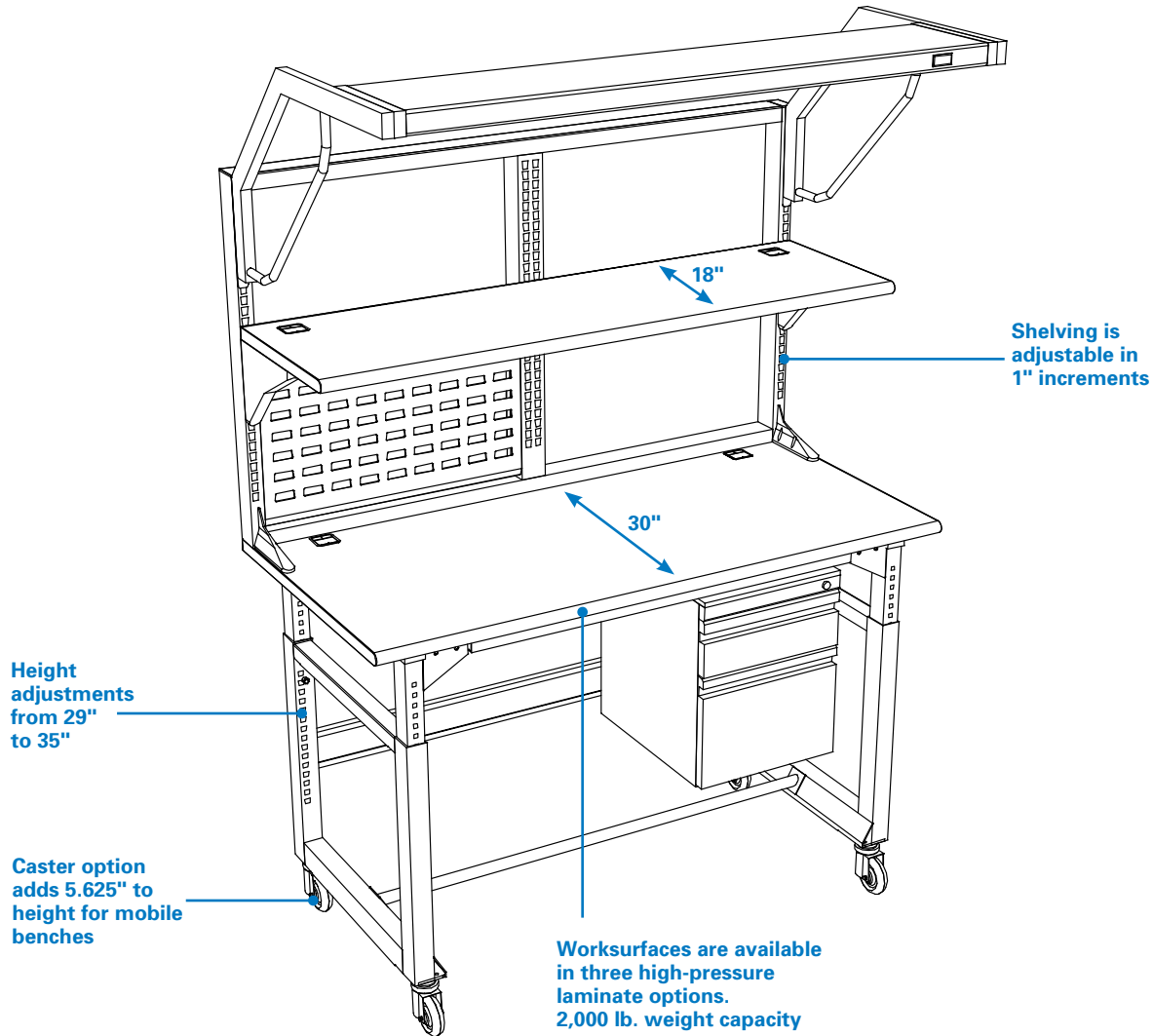
## 72" TECHBENCH OPTIONS

Part number	Description
WTB72-XXX-__	72" TechBench Only
WTB72-BXX-__	72" TechBench with TechOrganizer
WTB72-XPX-__	72" TechBench with pedestal
WTB72-BPX-__	72" TechBench with pedestal and TechOrganizer
WTB72-XCX-__	72" TechBench with Optimedia
WTB72-BCX-__	72" TechBench with Optimedia and TechOrganizer
WTB72-XXC-__	72" TechBench with casters
WTB72-BXC-__	72" TechBench with TechOrganizer and casters
WTB72-XPC-__	72" TechBench with pedestal and casters
WTB72-BPC-__	72" TechBench with pedestal, TechOrganize and casters
Optional accessories	
ePBZ72	Power Distribution Unit – 120V, 20-amp, 48"H
WLT72	72" TechBench light

**Note: Assembly Required**

# Key features

TechBench and TechOrganizer create a dynamic system that integrates people with technology, maximizes usable workspace and contributes to highly effective and efficient workflow. With the end user in mind, TechBench and TechOrganizer are modular and scalable providing highly customizable configurations, which enable an ergonomic workspace and improve the productivity of the technician using the work center.



For more information about TechBench, visit:  
[Eaton.com/techbench](http://Eaton.com/techbench)