

Product brochure

Seating for technical workspaces

Technical workstations aren't complete without the appropriate seating. Eaton offers a full portfolio of seating options to suit your needs. Specified by market segment, we offer a variety of options and price points to complete your workspace solution.

EATON

Powering Business Worldwide

24/7 seating

Eaton's 24/7 seating options are designed to withstand constant use in around-the-clock environments.



NP Endure 24/7
Part # SNP24100

Mesh back with tilt, medium fabric seat, four-way adjustable arms, seat slide, carpet casters, rated 350 lbs., Ace fabric



NG HD Overtime 6800
Part # SNG24100

Heavy duty back post, mid back, height and width adjustable arms, rated 300 lbs., Mystic fabric



CR Fusion
Part # SCR24100

Heavy duty back post, high back, height and width adjustable arms, rated 300 lbs., Forte fabric



NP Endure 5808
Part # SNP24200

24/7 mid back with tilt, large seat, four-way adjustable task arms, rated 400 lbs., Ace fabric



NG Sherman HD 9000
Part # SNG24200

24/7 heavy duty with fold away arms, reinforced seat, built in lumbar support, carpet casters, rated 450 lbs., Mystic fabric



CR Triton
Part # SCR24200

Heavy duty, large back, four-way adjustable arms, ESD, rated 350 lbs., Forte fabric



CON 24/7
Part # SC24200

24/7 task, high back, seven-caster safety base, lumbar, C loop arms, rated 550 lbs., black alternate leather

Round-the-clock
intensive
use



NG Heavy Duty
Part # SNG24300

24/7 high back seat, headrest, fold away arms, rated 450 lbs., Mystic fabric



NP Big & Tall
Part # SNP24300

24/7 extra large back and seat, adjustable arms, carpet casters, rated 500 lbs., Ace fabric



CON 24/7 Operator
Part # SC24300

24/7 high back, headrest, C loop arms, rated 550 lbs., black alternate leather



NP Big & Tall Jr.
Part # SNP24301

24/7 high back, large seat, four-way adjustable arms, carpet casters, rated 500 lbs., ultra leather

General office seating

Eaton's office seating portfolio includes options for private workstations and guest seating, conference rooms and training environments.



CR Fusion
Part # SCRGO100

Medium back, adjustable arms with slide, Forte fabric



NG VXO
Part # SNGGO100

Mesh back, mid back, lumbar support, rated 300 lbs., Mystic fabric

Multi-purpose



NP Right Chair
Part # SNPGO100

Mesh back, medium fabric seat, adjustable task arms, headrest, Ace fabric



CR Fusion Mesh
Part # SCRGO200

Mesh back, fabric seat, syncro tilt, adjustable arms, Forte fabric



NP Cozi
Part # SNPGO200

Mid back, medium seat, adjustable arms, 14 adjustment points, carpet casters, Ace fabric



NP Right Chair
Part # SNPGO201

High back, mesh back and seat, adjustable arms, Ace fabric



CON 24/7 Operator
Part # SCGO300

24/7 with headrest, lumbar, seven-caster safety base, swing arms, recline and full adjustment, alternate black leather



NG IC2
Part # SNGO300

All mesh, mid back with headrest, lumbar, black frame, black mesh



NP 8000 Series
Part # SNPGO300

High back, medium contoured foam seat, five-way adjustable arms, 12 adjustment points, headrest, Ace fabric



NP NV Series
Part # SNPGO301

High pillow top back, medium pillow top seat, chrome loop arms, ultra black leather

Guest/training chairs



NP Dice
Part # SNPGO102

Stackable five high, four-post leg, no arms, fabric back and seat, Ace fabric



NP Dice
Part # SNPGO204

Stackable five high, four-post leg, arms, fabric back and seat, Ace fabric



NG Cricket
Part # SNGGO201

Stackable six high, fabric back and seat, rounded arms, four-post leg, Mystic fabric



NG NXO
Part # SNGGO301

Perforated back, reclining motion, fabric seats, stackable three high, carpet casters, Mystic fabric

Conference chairs



NP Embrace
Part # SNPGO101

Mid back, medium seat, loop arm, tilt and swivel, Ace fabric



NG MXO
Part # SNGGO200

Mid back, mesh back, fabric seat, fixed arms, Mystic fabric

Lab/industrial seating

Our lab and industrial seating options provide the ergonomic support necessary for optimum comfort and productivity.



CR Rhino Plus Stool
Part # SCRL200

Medium back, black urethane and molded foam back and seat, four-way adjustment, adjustable task arms, foot ring



CR Fusion Stool
Part # SCRL100

Mid height, medium back, adjustable task arms*, Forte fabric
* Arms not shown



NP Geo Stool
Part # SNPL100

Geo stool, low black urethane back and contoured seat, no arms, 8" cylinder, chrome foot ring, hard floor casters

ergonomic
support



NG LXO Stool
Part # SNGL200

Mesh back, four-way adjustable arms; lumbar support, foot ring, Mystic fabric



NP Graphite Stool
Part # SNPL200

Medium back, black urethane back and seat, 8" cylinder, NeXtep platform with casters



CR Triton Stool
Part # SCRL300

ESD fabric, medium back, four-way, mechanical, adjustable arms*, foot ring, Forte fabric
* Arms not shown



NP Adapta Stool
Part # SNPL300

Medium back, large seat, adjustable arms, deluxe tilt mech, 8" cylinder, NeXtep platform with casters, black alternate leather



NG WXO Stool
Part # SNGL301

Mesh back and seat, contoured waterfall seat, adjustable height arms and lockable arm pads, 2" carpet casters, foot ring

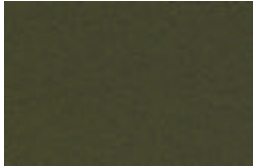


NP U3ia Stool
Part # SNPL301

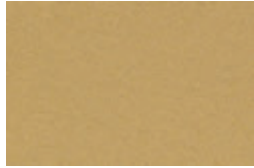
Mesh back, fabric seat, 3" adjustable arms, 8" cylinder, wide NeXtep with casters, Ace fabric

Fabric selections

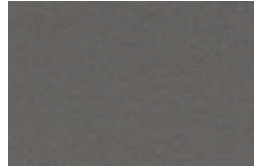
Ace fabrics



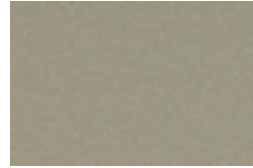
Basil



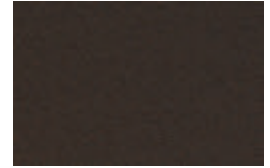
Butterscotch



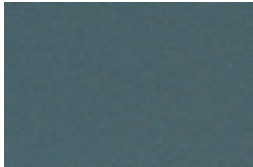
Char



Driftwood



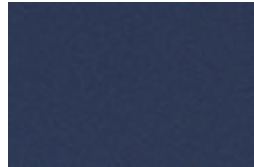
Fudge



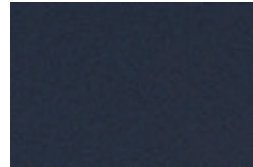
Grotto



Jet



Marina



Midnight



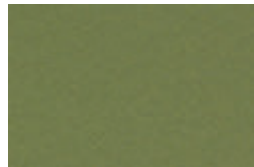
Peony



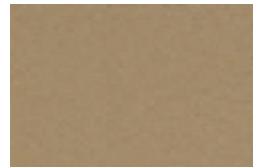
Petunia



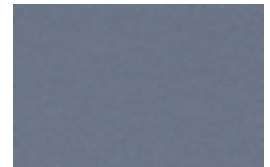
Poppy



Tarragon

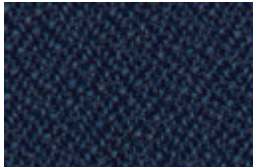


Toast



Water

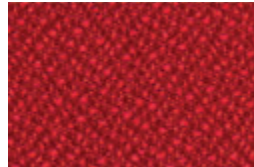
Forte fabrics



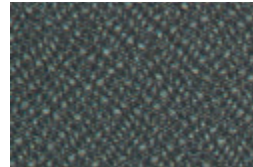
Cadet



Pumice



Rouge



Slate



Tuxedo

Mystic fabrics



Black



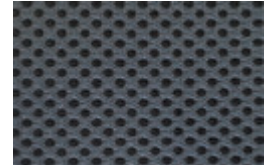
Burgundy



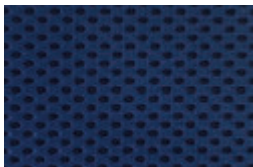
Gold



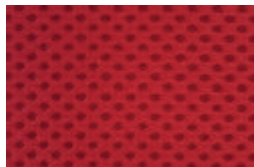
Green



Grey



Navy



Red



Leather

Black leather



Urethane

Black urethane

All mesh, urethane, leather and ultra leather come in black.

For more information, please visit:
Eaton.com/seating