

Office furniture solutions

# TechCart™

Mobile furniture designed for a wide variety of work environments

**EATON**

*Powering Business Worldwide*

Switch  N to Eaton.

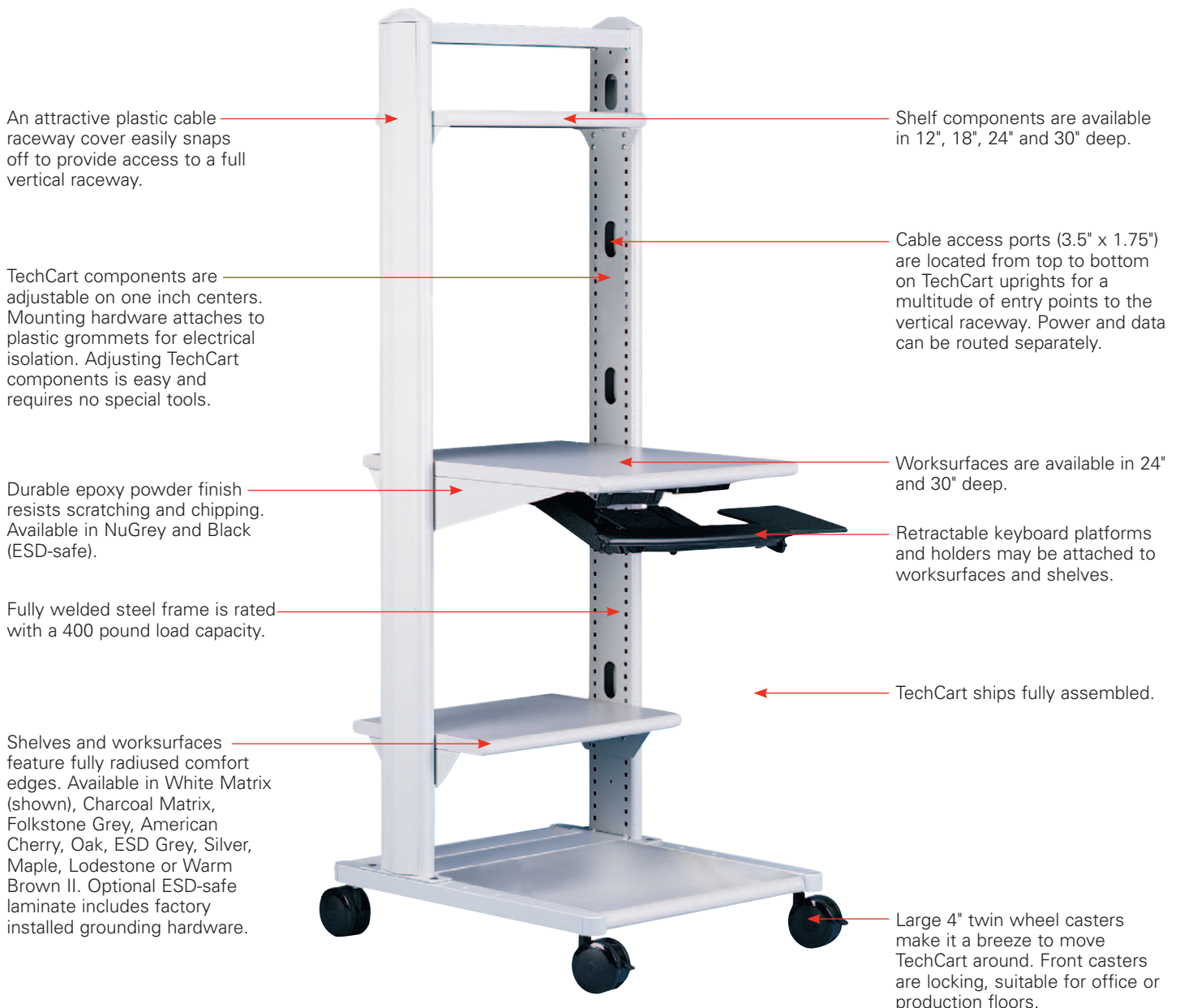
# TechCart Features

## Plug 'n Play or Build you Own

TechCart is the industry leader in flexibility and strength. Whether choosing one of the pre-configured carts shown in this brochure or creating a custom configuration, Eaton has the solution for your mobile needs. TechCarts have earned their "best-in-class" reputation through their impressive construction and durability, modular reconfigurable design, thoughtful ergonomics and technology friendly cable and power management.

Discover how easy it is to own the best.

Call your Eaton representative today, or visit us online at [www.eaton.com/wrightline](http://www.eaton.com/wrightline).



## Peripheral Cart

- Supports laser printers, scanners, workstation servers, fax machines and small copiers; slides conveniently under worksurface
- Includes bottom shelf for supplies and peripherals

Item Number	Dimensions	Weight
TCPK0001	20"H x 26"W x 24"D	77 pounds
TCPK0002	20"H x 32"W x 24"D	88 pounds



## PC Cart

- Provides ergonomic accommodation for personal computers, printers, peripherals and supplies in a minimal footprint
- Accepts optional CPU holders for added convenience and space savings
- Order keyboard/mouse platform accessories separately

Item Number	Dimensions	Weight
TCPK0005	65"H x 26"W x 30"D	95 pounds
TCPK0006	65"H x 32"W x 30"D	105 pounds



## Transporter Cart

- Maximizes the use of vertical space to transport technical hardware including monitors, peripherals, printers and common office equipment
- Ideal for PC repair transportation and distribution, as well as mail bin transportation, parts distribution and lab equipment staging

Item Number	Dimensions	Weight
TCPK0010	46"H x 32"W x 30"D	180 pounds
TCPK0011	46"H x 38"W x 30"D	202 pounds



## Training Station

- Provides ample desktop space for a large monitor and reference materials
- Accepts optional CPU holders for added convenience and space savings
- Order keyboard/mouse platform accessories separately

Item Number	Dimensions	Weight
TCPK0013	29"H x 32"W x 30"D	81 pounds
TCPK0014	29"H x 38"W x 30"D	87 pounds
TCPK0015	29"H x 48"W x 30"D	102 pounds



## Stand-up Cart

- Provides a walk-up workstation for a variety of applications such as library, web browser and shared workstations
- Accommodates desktop CPU and monitor on a standing height worksurface, or reposition the bottom shelf for lateral mounting of optional CPU holder for tower-style CPUs
- Order keyboard/mouse accessories separately

Item Number	Dimensions	Weight
TCPK0024	73"H x 26"W x 30"D	117 pounds



## Graphics & CAD Cart

- Accommodates large dual CRT or flat screen monitors
- Provides undersurface shelf for CPU and peripherals
- Order keyboard/mouse accessories separately

Item Number	Dimensions	Weight
TCPK0030	29"H x 38"W x 30"D	101 pounds
TCPK0031	29"H x 48"W x 30"D	120 pounds





### Storage Cart

- Top shelf accommodates up to a 95 pound presentation screen
- Includes overhead locking compartment for enclosed storage of materials

Item Number	Dimensions	Weight
TCPK0040	73"H x 32"W x 30"D	135 pounds



### Network Cart

- Designed for various sized hardware
- Offers server, RAID array or CD tower mobility and transportation
- Order keyboard/mouse platform accessories separately (model LA08 recommended for top shelf)

Item Number	Dimensions	Weight
TCPK0057	65"H x 26"W x 30"D	120 pounds
TCPK0058	65"H x 32"W x 30"D	143 pounds



### Analytical Cart

- Safely transports test equipment and PC hardware
- Provides additional protection of sensitive electronic equipment with optional ESD-safe laminate surface and industry standard grounding kit

Item Number	Dimensions	Weight
TCPK0061	46"H x 26"W x 30"D	107 pounds

## Laptop Cart

- Pre-configured hardware cart accommodates 18 or 24 laptop computers
- All models include integrated master power strip(s) to charge computer power supplies
- Top surface includes either an oversized cable access port or a module with power receptacles
- Each laptop is stored in a dedicated compartment; maximum clearance per bay is 13.7"W x 21.8"D x 2.3"H
- Each compartment provides adequate storage space to accommodate external power chargers/adapters
- Perforated front and rear doors provide optimal air circulation
- Locking front and rear doors provide keyed security (core removal lock designs)

Item Number	Dimensions	Desktop Specification	Laptop Capacity
TCLT1800	36.12"H x 39.3"W x 29.07"D	Cable Access	18
TCLT1801	36.12"H x 39.3"W x 29.07"D	Power Module	18
TCLT2400	45.11"H x 39.13"W x 29.07"D	Cable Access	24
TCLT2401	45.11"H x 39.13"W x 29.07"D	Power Module	24



## Video Conference Cart

- Accommodates a large 27" screen monitor, camera-imaging devices and VCRs
- Includes safety strap kit to secure TV monitor
- Load capacity for monitor is 95 pounds

Item Number	Dimensions	Weight
TCPK0037	46"H x 32"W x 30"D	119 pounds
TCPK0038	46"H x 38"W x 30"D	130 pounds





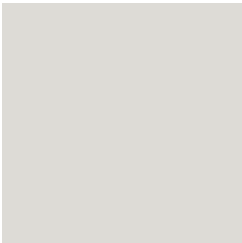
## Presentation Cart

- 32"W cart accommodates up to a 19" screen monitor, 38"W cart up to a 27" screen
- Includes safety strap kit to secure TV monitor

Item Number	Dimensions	Weight
TCPK0041	65"H x 32"W x 30"D	152 pounds
TCPK0042	65"H x 38"W x 30"D	157 pounds

## Steel Finishes

TechCart steel is painted with a textured epoxy powder coat for a durable, attractive finish.



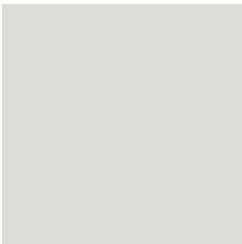
**NuGrey (F)**



**Black (M)**

## Laminate Finishes

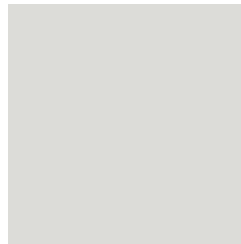
TechCart worksurfaces are finished with decorative laminate and feature a full bullnose comfort edge.



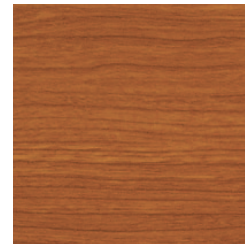
**Folkstone Gray (L)**



**Charcoal Matrix (G)**



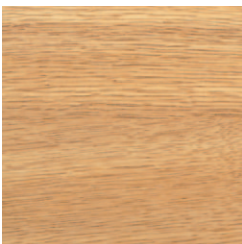
**ESD Gray (E)**



**American Cherry (A)**



**White Matrix (K)**



**Oak (D)**



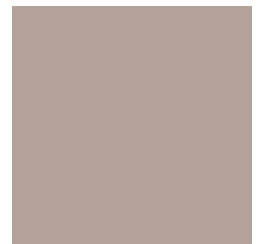
**Silver (V)**



**Maple (Y)**



**Lodestone (H)**



**Warm Brown II (R)**

**Note:** Colors are representational only. Please refer to our fabric card and laminate tags for accurate color representations.

To contact an Eaton salesperson or  
local distributor, please visit  
[www.eaton.com/wrightline](http://www.eaton.com/wrightline) or call  
**800-225-7348**

**Eaton Corporation**  
Electrical Sector  
1111 Superior Avenue  
Cleveland, OH 44114  
United States  
877-ETN-CARE (877-386-2273)  
Eaton.com

© 2011 Eaton Corporation  
All Rights Reserved  
Publication No. GOP05FXA/WP-5K/1112



TechCart is a trademark of Eaton Corporation or its subsidiaries and affiliates. All other trademarks are property of their respective owners.