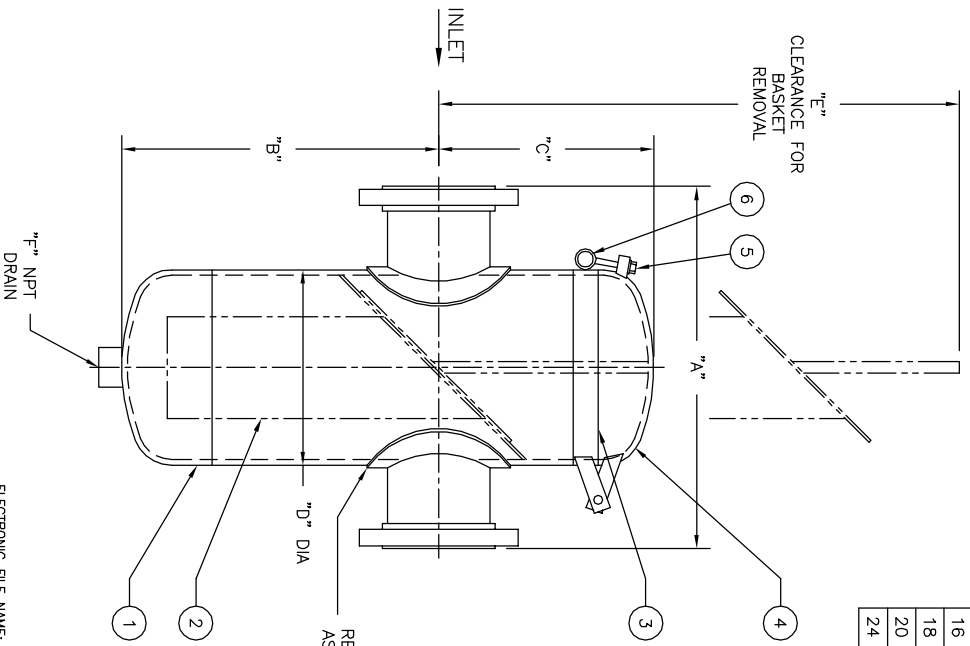


NO.	PART NAME	MATERIAL
1	BODY	CARBON STEEL
2	BASKET	
	PERF. DIA	
	MESH	
3	O-RING	BUNA-N
4	COVER	CARBON STEEL
5	BOLTS	A 325
6	NUTS	A 193 B7



PIPE SIZE (NOMINAL)	DIMENSIONS						APPROX. WEIGHT LBS. KG	PART NO.
	A IN. MM	B IN. MM	C IN. MM	D IN. MM	E IN. MM	F (NOM.) IN. MM		
2 (50mm)	14.00/356	12.00/305	8.63/219	6.63/168	26.00/660	1/2 (15)	90 / 40.8	ST0900200DR3TA
3 (80mm)	15.00/381	12.50/318	8.63/219	6.63/168	26.00/660	1/2 (15)	105 / 47.6	ST0900300DR3TA
4 (100mm)	16.00/406	14.00/356	9.50/241	8.63/219	29.00/737	1 (25)	180 / 81.6	ST0900400DR3TA
5 (125mm)	17.50/445	15.00/381	11.25/286	10.75/273	33.00/838	1 (25)	240 / 108.9	ST0900500DR3TA
6 (150mm)	21.00/533	17.00/432	11.25/286	10.75/273	35.00/889	1 (25)	265 / 120.2	ST0900600DR3TA
8 (200mm)	23.00/584	21.00/533	13.00/330	12.75/324	42.00/1067	1-1/2 (40)	365 / 165.6	ST0900800DR3TA
10 (250mm)	33.00/838	25.00/635	15.75/400	16.00/406	50.00/1270	1-1/2 (40)	590 / 267.6	ST0901200DR3TA
12 (300mm)	36.00/914	28.00/711	17.75/451	18.00/457	56.00/1422	1-1/2 (40)	810 / 367.4	ST0901400DR3TA
14 (350mm)	38.00/965	33.00/838	19.75/502	20.00/508	65.00/1651	2 (50)	1035 / 469.5	ST0901400DR3TA
16 (400mm)	43.00/1092	36.00/914	23.25/591	24.00/610	74.00/1880	2 (50)	1330 / 603.3	ST0901600DR3TA
18 (450mm)	43.00/1092	39.00/991	23.25/591	24.00/610	76.00/1930	2 (50)	1455 / 660.0	ST0901800DR3TA
20 (500mm)	44.50/1130	44.00/1118	29.00/737	30.00/762	88.00/2235	2 (50)	1820 / 825.5	ST0902000DR3TA
24 (600mm)	49.75/1264	60.00/1524	30.00/762	30.00/762	102.00/2591	2 (50)	2355 / 1068.2	ST0902400DR3TA

NOTES :
 1. UNITS ARE DESIGNED IN ACCORDANCE WITH ASME SECT. VIII, DIV. I OF BOILER PRESSURE VESSEL. CODE & IN COMPLIANCE TO CURRENT PUBLISHED ADDENDA .
 2. CODE STAMPED VESSEL AVAILABLE.
 3. ALL DIMENSIONS ARE IN INCHES / MM.
 4. INLET / OUTLET FLANGES PER ANSI B16.5.
 5. ALL BOLT HOLES STRADDLE NATURAL CENTERLINES.
 6A. DESIGN PRESSURE : 300 PSIG @ 150° F (20.7 BAR @ 65.6°C)
 (MDMT : -20°F @ 300 PSIG (MDMT : -28.9°C @ 20.7 BAR))

6B. DESIGN PRESSURE : 240 PSIG @ 150° F (20" AND 24" SIZE) (16.5 BAR @ 65.6°C)
 (GOV. BY QOC)
 (MDMT : -20°F @ 240 PSIG (MDMT : -28.9°C @ 16.5 BAR))

CERTIFIED FOR:
 P.O. NO.:
 REG. NO.:
 QUOTE NO.:
 TAG NO.:

ELECTRONIC FILE NAME: SD0900C3.DWG
 REF. ECR D507 DATE 11/1/05

UNAUTHORIZED USE, MANUFACTURE OR REPRODUCTION IN WHOLE OR IN PART IS PROHIBITED. DRAWING, DESIGN AND OTHER DISCLOSURES PROPERTY OF EATON FILTRATION, LLC

		EATON FILTRATION, LLC 900 FAIRMOUNT AVENUE, ELIZABETH, NEW JERSEY 07207			
		NAME MODEL 90 BASKET STRAINER 300# RF FLANGE / QUICK OPENING COVER SIZES 2" THRU 24" CARBON STEEL			
DRAWN SIZE A	FM DWG NO	DATE 1/5/98	CERT. LF	DATE 1/5/98	REV C
SD0900C3					