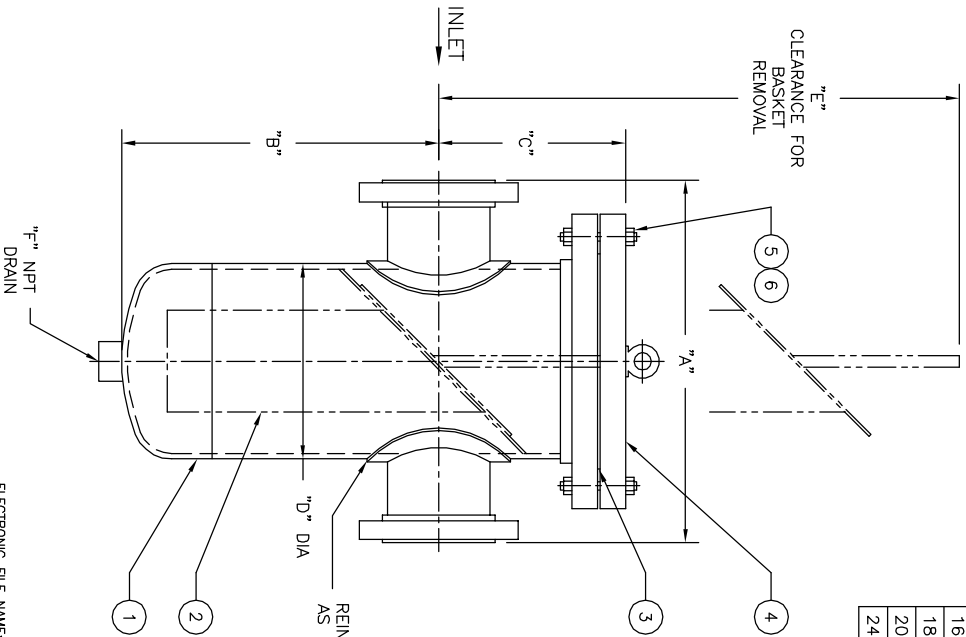


NO.	PART NAME	MATERIAL
1	BODY	STAINLESS STEEL
2	BASKET	
	PERF. DIA.	
	MESH	
3	GASKET	NON-ASBESTOS
4	COVER	STAINLESS STEEL
5	STUDS	SA 193 B7
6	NUTS	SA 194 ZH

PIPE SIZE (NOMINAL)	DIMENSIONS						APPROX. WEIGHT LBS. KG	PART NO.
	A IN. MM	B IN. MM	C IN. MM	D IN. MM	E IN. MM	F (NOM.) IN. MM		
2 (50mm)	14.00/356	12.00/305	9.00/229	6.63/168	26.00/660	1/2 (15)	160 / 72.6	ST090020DR2BA
3 (80mm)	15.00/381	12.50/318	9.00/229	6.63/168	26.00/660	1/2 (15)	175 / 79.4	ST090030DR2BA
4 (100mm)	16.00/406	14.00/356	9.50/241	8.63/219	28.00/711	1 (25)	290 / 131.5	ST090040DR2BA
5 (125mm)	17.50/445	15.00/381	11.00/279	10.75/273	33.50/851	1 (25)	400 / 181.4	ST090050DR2BA
6 (150mm)	21.00/533	17.00/432	11.00/279	10.75/273	35.50/902	1 (25)	425 / 192.8	ST090060DR2BA
8 (200mm)	23.00/584	21.00/533	12.50/318	12.75/324	42.50/1080	1-1/2 (40)	605 / 274.4	ST090080DR2BA
10 (250mm)	33.00/838	25.00/635	14.50/368	16.00/406	49.00/1245	1-1/2 (40)	1025 / 464.9	ST090100DR2BA
12 (300mm)	36.00/914	28.00/711	16.00/406	18.00/457	54.50/1384	1-1/2 (40)	1330 / 603.3	ST090120DR2BA
14 (350mm)	38.00/965	33.00/838	17.50/445	20.00/508	62.75/1594	2 (50)	1670 / 757.5	ST090140DR2BA
16 (400mm)	43.00/1092	36.00/914	20.00/508	24.00/610	69.75/1772	2 (50)	2335 / 1059.1	ST090160DR2BA
18 (450mm)	43.00/1092	39.00/991	20.00/508	24.00/610	71.75/1822	2 (50)	2460 / 1115.8	ST090180DR2BA
20 (500mm)	44.50/1130	44.00/1118	24.00/610	30.00/762	84.50/2146	2 (50)	3390 / 1537.7	ST090200DR2BA
24 (600mm)	49.75/1264	60.00/1524	24.00/610	30.00/762	98.50/2502	2 (50)	3925 / 1780.4	ST090240DR2BA

CLEARANCE FOR
BASKET
REMOVAL



- NOTES :
- UNITS ARE DESIGNED IN ACCORDANCE WITH ASME SECT. VIII, DIV. I OF BOILER PRESSURE VESSEL, CODE & IN COMPLIANCE TO CURRENT PUBLISHED ADDENDA .
 - CODE STAMPED VESSEL AVAILABLE.
 - ALL DIMENSIONS ARE IN INCHES / MM.
 - INLET / OUTLET FLANGES PER ANSI B16.5.
 - ALL BOLT HOLES STRADDLE NATURAL CENTERLINES.
 - DESIGN PRESSURE : 375 PSIG @ 150° F (25.9 BAR @ 65.6°C)
MDMT : -20°F @ 375 PSIG (MDMT : -28.9°C @ 25.9 BAR)
- CERTIFIED FOR:
- P.O. NO.:
- REG. NO.:
- QUOTE NO.:
- TAG NO.:

ELECTRONIC FILE NAME: SD090BC4.DWG
REF. EDR D507 DATE 11/1/05

UNAUTHORIZED USE, MANUFACTURE OR REPRODUCTION IN WHOLE OR IN PART IS PROHIBITED. DRAWING, DESIGN AND OTHER DISCLOSURES PROPERTY OF EATON FILTRATION, LLC

EATON		EATON FILTRATION, LLC	
NAME		900 FARMOUNT AVENUE, ELIZABETH, NEW JERSEY 07207	
MODEL 90 BASKET STRAINER		300# RF FLANGE / BOLTED COVER	
SIZES 2" THRU 24"		STAINLESS STEEL	
DRAWN	FM	DATE	6/8/01
SIZE	A	CERT.	LH
DWG NO			
SD090BC4			DATE
			6/8/01
			REV
			C