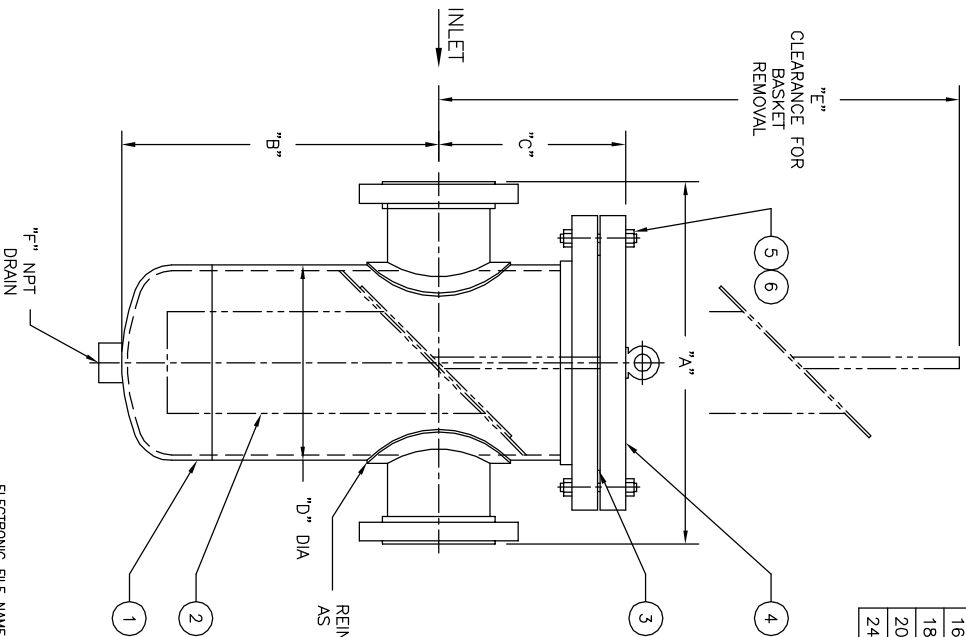


NO.	PART NAME	MATERIAL
1	BODY	CARBON STEEL
2	BASKET	
	PERF. DIA	
	MESH	
3	GASKET	NON-ASBESTOS
4	COVER	CARBON STEEL
5	STUDS	SA 193 B7
6	NUTS	SA 194 2H

PIPE SIZE (NOMINAL)	DIMENSIONS						APPROX. WEIGHT LBS. KG	PART NO.
	A IN. MM	B IN. MM	C IN. MM	D IN. MM	E IN. MM	F (NOM.) IN. MM		
2 (50mm)	14.00/356	12.00/305	9.00/229	6.63/168	26.00/660	1/2 (15)	160/72.6	ST090020DR35A
3 (80mm)	15.00/381	12.50/318	9.00/229	6.63/168	26.00/660	1/2 (15)	175/79.4	ST090030DR35A
4 (100mm)	16.00/406	14.00/356	9.50/241	8.63/219	28.00/711	1 (25)	290/131.5	ST090040DR35A
5 (125mm)	17.50/445	15.00/381	11.00/279	10.75/273	33.50/851	1 (25)	400/181.4	ST090050DR35A
6 (150mm)	21.00/533	17.00/432	11.00/279	10.75/273	35.50/902	1 (25)	425/192.8	ST090060DR35A
8 (200mm)	23.00/584	21.00/533	12.50/318	12.75/324	42.50/1080	1-1/2 (40)	605/274.4	ST090080DR35A
10 (250mm)	33.00/838	25.00/635	14.50/368	16.00/406	49.00/1245	1-1/2 (40)	1025/464.9	ST090100DR35A
12 (300mm)	36.00/914	28.00/711	16.00/406	18.00/457	54.50/1384	1-1/2 (40)	1540/698	ST090120DR35A
14 (350mm)	38.00/965	33.00/838	17.50/445	20.00/508	62.75/1594	2 (50)	1700/770	ST090140DR35A
16 (400mm)	43.00/1092	36.00/914	20.00/508	24.00/610	69.75/1772	2 (50)	2500/1133	ST090160DR35A
18 (450mm)	43.00/1092	39.00/991	20.00/508	24.00/610	71.75/1822	2 (50)	2750/1245	ST090180DR35A
20 (500mm)	44.50/1130	44.00/1118	26.00/660	30.00/762	84.50/2146	2 (50)	3600/1631	ST090200DR35A
24 (600mm)	49.75/1264	60.00/1524	26.00/660	30.00/762	98.50/2502	2 (50)	4150/1880	ST090240DR35A

"E"  
CLEARANCE FOR  
BASKET  
REMOVAL



"D" DIA  
REINFORCEMENT PAD  
AS REQUIRED BY DESIGN

- NOTES :
- UNITS ARE DESIGNED IN ACCORDANCE WITH ASME SECT. VIII, DIV. 1 OF BOILER PRESSURE VESSEL. CODE & IN COMPLIANCE TO CURRENT PUBLISHED ADDENDA .
  - CODE STAMPED VESSEL AVAILABLE.
  - ALL DIMENSIONS ARE IN INCHES / MM.
  - INLET / OUTLET FLANGES PER ANSI B16.5.
  - ALL BOLT HOLES STRADDLE NATURAL CENTERLINES.
  - DESIGN PRESSURE : 375 PSIG @ 150° F (25.9 BAR @ 65.6°C)  
MDMT : -20°F @ 375 PSIG  
(MDMT : -28.9°C @ 25.9 BAR)
- CERTIFIED FOR:
- P.O. NO.:
- REG. NO.:
- QUOTE NO.:
- TAG NO.:

ELECTRONIC FILE NAME: SD090BC3.DWG  
REF. ECR D507 DATE 11/1/05

UNAUTHORIZED USE, MANUFACTURE OR REPRODUCTION IN WHOLE OR IN PART IS PROHIBITED. DRAWING, DESIGN AND OTHER DISCLOSURES PROPERTY OF EATON FILTRATION, LLC

<b>EATON</b>		<b>EATON FILTRATION, LLC</b>	
NAME		900 FAIRMOUNT AVENUE, ELIZABETH, NEW JERSEY 07207	
MODEL 90 BASKET STRAINER		300# RF FLANGE BOLTED COVER	
SIZES 2" THRU 24"		CARBON STEEL	
DRAWN	FM	DATE	1/5/98
SIZE	DWG NO	CERT.	LF
A			
		DATE	1/5/98
		REV	D

SD090BC3