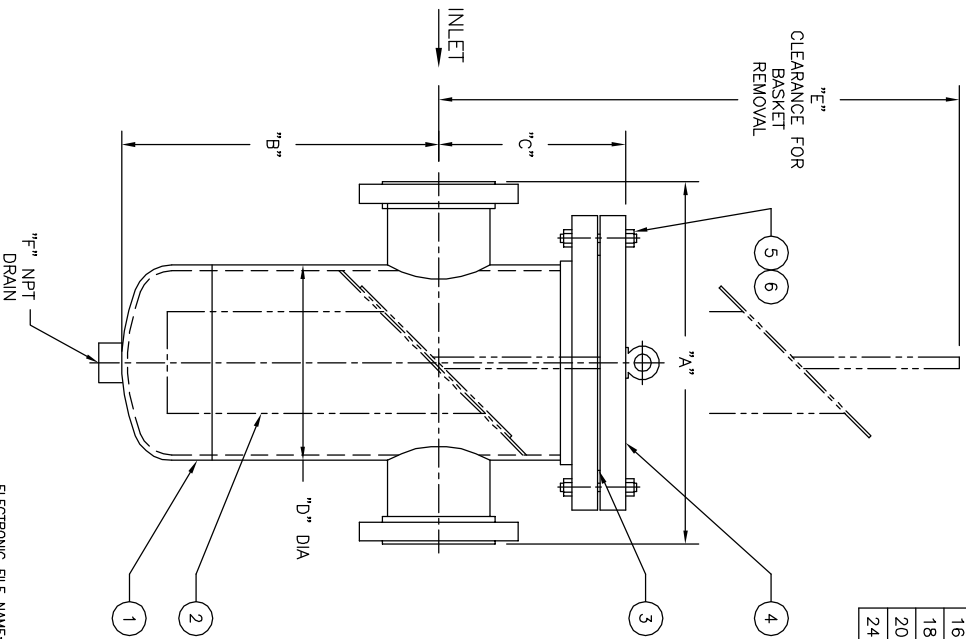


NO.	PART NAME	MATERIAL
1	BODY	STAINLESS STEEL
2	BASKET	
	PERF. DIA	
	MESH	
3	GASKET	NON-ASBESTOS
4	COVER	STAINLESS STEEL
5	STUDS	SA 193 B7
6	NUTS	SA 194 2H

PIPE SIZE (NOMINAL)	DIMENSIONS						APPROX. WEIGHT LBS. KG	PART NO.
	A IN. MM	B IN. MM	C IN. MM	D IN. MM	E IN. MM	F (NOM.) IN. MM		
2 (50mm)	14.00/356	12.00/305	7.00/178	6.63/168	23.00/584	1/2 (15)	95 / 43.1	ST090020BR2BA
3 (80mm)	15.00/381	12.50/318	8.00/203	6.63/168	24.00/610	1/2 (15)	103 / 46.7	ST090030BR2BA
4 (100mm)	16.00/406	14.00/356	8.25/210	8.63/219	28.00/711	1 (25)	170 / 77.1	ST090040BR2BA
5 (125mm)	16.00/406	15.00/381	9.50/241	10.75/273	32.00/813	1 (25)	230 / 104.3	ST090050BR2BA
6 (150mm)	20.00/508	17.00/432	9.50/241	10.75/273	34.00/864	1 (25)	240 / 108.9	ST090060BR2BA
8 (200mm)	22.00/559	21.00/533	11.00/279	12.75/324	41.00/1041	1-1/2 (40)	340 / 154.2	ST090080BR2BA
10 (250mm)	32.00/813	25.00/635	13.00/330	16.00/406	47.50/1207	1-1/2 (40)	600 / 272.2	ST090100BR2BA
12 (300mm)	37.00/889	28.00/711	14.50/368	18.00/457	53.00/1346	1-1/2 (40)	770 / 349.9	ST090120BR2BA
14 (350mm)	37.00/940	33.00/838	15.75/400	20.00/508	61.00/1549	2 (50)	970 / 440.0	ST090140BR2BA
16 (400mm)	42.00/1067	36.00/914	18.25/464	24.00/610	68.00/1727	2 (50)	1360 / 616.9	ST090160BR2BA
18 (450mm)	42.00/1067	39.00/991	18.25/464	24.00/610	70.00/1778	2 (50)	1400 / 635.0	ST090180BR2BA
20 (500mm)	43.00/1092	44.00/1118	21.75/553	30.00/762	82.00/2083	2 (50)	1920 / 870.9	ST090200BR2BA
24 (600mm)	48.00/1219	60.00/1524	21.75/553	30.00/762	96.00/2438	2 (50)	2200 / 997.9	ST090240BR2BA



- NOTES :
1. UNITS ARE DESIGNED IN ACCORDANCE WITH ASME SECT. VIII, DIV. 1 OF BOILER PRESSURE VESSEL. CODE & IN COMPLIANCE TO CURRENT PUBLISHED ADDENDA .
 2. CODE STAMPED VESSEL AVAILABLE.
 3. ALL DIMENSIONS ARE IN INCHES / MM.
 4. INLET / OUTLET FLANGES PER ANSI B16.5.
 5. ALL BOLT HOLES STRADDLE NATURAL CENTERLINES.
 6. DESIGN PRESSURE : 150 PSIG @ 150° F (10.3 BAR @ 65.6°C)

MDMT : -20°F @ 150 PSIG
(MDMT : -28.9°C @ 10.3 BAR)

CERTIFIED FOR:
P.O. NO.:
REG. NO.:
QUOTE NO.:
TAG NO.:

ELECTRONIC FILE NAME: SD090BC2.DWG
REF. ECR D507 DATE 11/1/05

UNAUTHORIZED USE, MANUFACTURE OR REPRODUCTION IN WHOLE OR IN PART IS PROHIBITED. DRAWING, DESIGN AND OTHER DISCLOSURES PROPERTY OF EATON FILTRATION, LLC

		EATON FILTRATION, LLC 900 FAIRMOUNT AVENUE, ELIZABETH, NEW JERSEY 07207			
		NAME MODEL 90 BASKET STRAINER 150# RF FLANGE / BOLTED COVER SIZES 2" THRU 24" STAINLESS STEEL			
DRAWN	FM	DATE	CERT.	LF	DATE
SIZE	DWG				REV
A	NO	SD090BC2			D
		1/5/98			1/5/98