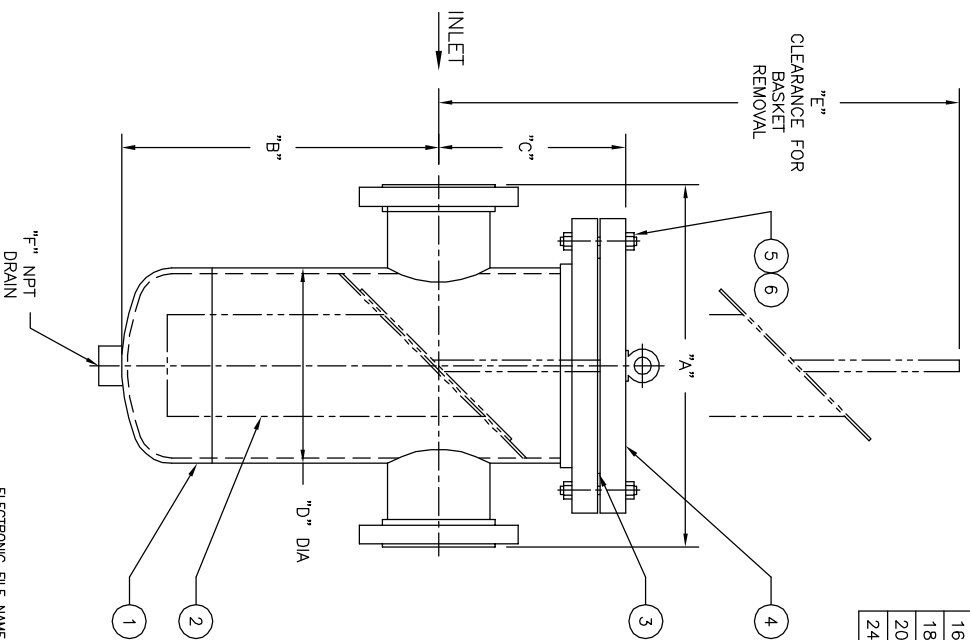


NO.	PART NAME	MATERIAL
1	BODY	CARBON STEEL
2	BASKET	
	PERF. DIA	
	MESH	
3	GASKET	NON-ASBESTOS
4	COVER	CARBON STEEL
5	STUDS	SA 193 B7
6	NUTS	SA 194 2H



PIPE SIZE (NOMINAL)	DIMENSIONS						APPROX. WEIGHT LBS. KG	PART NO.
	A IN. MM	B IN. MM	C IN. MM	D IN. MM	E IN. MM	F (NOM.) IN. MM		
2 (50mm)	14.00/356	12.00/305	7.00/178	6.63/168	23.00/584	1/2 (15)	110 / 49.9	ST090020BR35A
3 (80mm)	15.00/381	12.50/318	8.00/203	6.63/168	24.00/610	1/2 (15)	120 / 54.4	ST090030BR35A
4 (100mm)	16.00/406	14.00/356	8.25/210	8.63/219	28.00/711	1 (25)	205 / 93.0	ST090040BR35A
5 (125mm)	16.00/406	15.00/381	9.50/241	10.75/273	32.00/813	1 (25)	275 / 124.7	ST090050BR35A
6 (150mm)	20.00/508	17.00/432	9.50/241	10.75/273	34.00/864	1 (25)	290 / 131.5	ST090060BR35A
8 (200mm)	22.00/559	21.00/533	11.00/279	12.75/324	41.00/1041	1-1/2 (40)	410 / 186.0	ST090080BR35A
10 (250mm)	32.00/813	25.00/635	13.00/330	16.00/406	47.50/1207	1-1/2 (40)	700 / 317.5	ST090100BR35A
12 (300mm)	35.00/889	28.00/711	14.50/368	18.00/457	53.00/1346	1-1/2 (40)	890 / 403.7	ST090120BR35A
14 (350mm)	37.00/940	33.00/838	15.75/400	20.00/508	61.00/1549	2 (50)	1100 / 499.0	ST090140BR35A
16 (400mm)	42.00/1067	36.00/914	18.25/464	24.00/610	68.00/1727	2 (50)	1500 / 680.4	ST090160BR35A
18 (450mm)	42.00/1067	39.00/991	18.25/464	24.00/610	70.00/1778	2 (50)	1550 / 703.1	ST090180BR35A
20 (500mm)	43.00/1092	44.00/1118	23.25/591	30.00/762	82.00/2083	2 (50)	2250 / 1020	ST090200BR35A
24 (600mm)	48.00/1219	60.00/1524	23.25/591	30.00/762	96.00/2438	2 (50)	2570 / 1165	ST090240BR35A

NOTES :

- UNITS ARE DESIGNED IN ACCORDANCE WITH ASME SECT. VIII, DIV. 1 OF BOILER PRESSURE VESSEL. CODE & IN COMPLIANCE TO CURRENT PUBLISHED ADDENDA .
- CODE STAMPED VESSEL AVAILABLE.
- ALL DIMENSIONS ARE IN INCHES / MM.
- INLET / OUTLET FLANGES PER ANSI B16.5.
- ALL BOLT HOLES STRADDLE NATURAL CENTERLINES.
- DESIGN PRESSURE : 150 PSIG @ 150° F (10.3 BAR @ 65.6°C)

MDMT : -20°F @ 150 PSIG  
(MDMT : -28.9°C @ 10.3 BAR)

CERTIFIED FOR:

P.O. NO.:

REG. NO.:

QUOTE NO.:

TAG NO.:

ELECTRONIC FILE NAME: SD090BC1.DWG  
REF. ECR D507 DATE 11/1/05

UNAUTHORIZED USE, MANUFACTURE OR REPRODUCTION IN WHOLE OR IN PART IS PROHIBITED. DRAWING, DESIGN AND OTHER DISCLOSURES PROPERTY OF EATON FILTRATION, LLC

		<b>EATON FILTRATION, LLC</b> 900 FAIRMOUNT AVENUE, ELIZABETH, NEW JERSEY 07207	
		MODEL 90 BASKET STRAINER 150# RF FLANGE / BOLTED COVER SIZES 2" THRU 24" CARBON STEEL	
DRAWN	FM	DATE	1/5/98
SIZE	DWG NO	CERT.	LF
A			
	SD090BC1	DATE	1/5/98
		REV	C