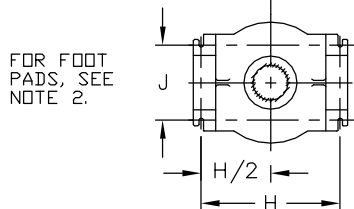
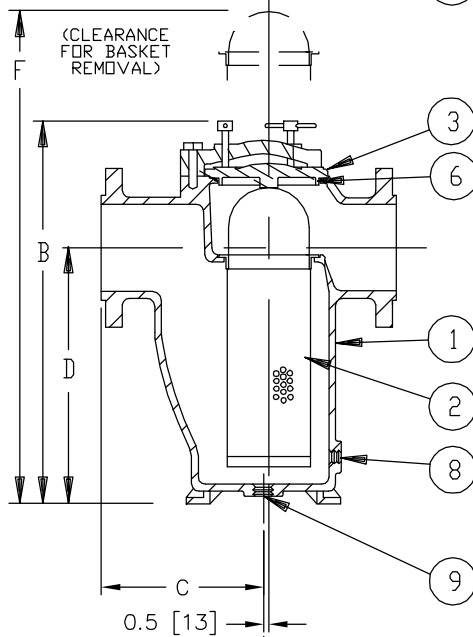
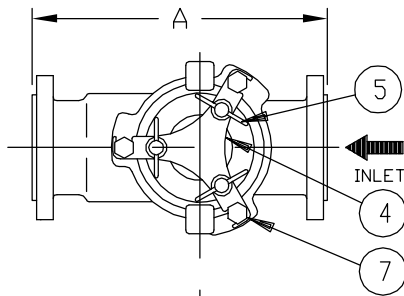


REVISIONS				
REV	DESCRIPTION	BY	ECO	DATE
F	UPDATED TITLE BLOCK	R. DHONDE	0106104	12/25/2014




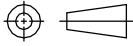
FOR FOOT PADS, SEE NOTE 2.

NO.	PART NAME	MATERIAL
1	BODY	SSTL ASTM A351 GR. CF8M
2	SCREEN	
	PERF. DIA.	
	MESH	
3	COVER	SSTL ASTM A351 GR. CF8M
4	YOKE	DUCTILE IRON
5	YOKE SCREW	STEEL
6	O-RING	VITON
7	STUD	STEEL
8	DRAIN PLUG	STAINLESS STEEL
9	BODY PLUG	STAINLESS STEEL

NOTES:

1. INLET/OUTLET 150 LB. RAISED FACED FLANGED CONNECTIONS PER ASME B16.5.
2. 5/8" DIAMETER SLOTTED FOOT PADS FOR 8" SIZE.
3. DIMENSION "G" (NPT) IS FOR DRAIN PLUG, ITEM 8.
4. ITEM 9, BODY PLUG IS NOT TO BE USED AS DRAIN.
5. MAX. WORKING PRESSURE: 200 PSI @ 100° F (13.8 BAR @ 37.8° C)

PIPE SIZE (NOMINAL)	DIMENSIONS										WEIGHT (DRY) LBS. KGS.	PART NO.					
	A		B		C		D		F	G (NOM.)			H	J			
	IN.	MM.	IN.	MM.	IN.	MM.	IN.	MM.	IN.	MM.	IN.	MM.					
8" (200mm)	27.00	/ 686	40.00	/1016	15.5	/ 394	27.00	/ 686	60	/1524	1/2 (15)	15.75	/400	8.50	/216	550/ 249	ST0720800R2C

DRAWN BY FM		 HYDRAULICS GROUP FILTRATION DIVISION GALESBURG, MICHIGAN, USA • TINTON FALLS, NEW JERSEY, USA					
SCALE AS DRAWN							
CUSTOMER INFO		RESTRICTION RESTRICTED		TITLE MODEL 72 SIMPLEX STRAINER, 150# RAISED FACE FLANGE, SIZE 8" STAINLESS STEEL			
NAME		SHEET 1 OF 1					
P.O. NO.		PROJECTION THIRD ANGLE 		DATE 01/25/95	SIZE A	DWG FILENAME SD072030	REV F
S.O. NO.		EATON CORPORATION - CONFIDENTIAL AND PROPRIETARY NOTICE TO PERSONS RECEIVING THIS DRAWING AND/OR TECHNICAL INFORMATION THIS DOCUMENT, INCLUDING THE DRAWING AND INFORMATION CONTAINED THEREON IS CONFIDENTIAL AND IS THE EXCLUSIVE PROPERTY OF EATON AT ANY TIME. BY TAKING THE POSSESSION OF THIS DOCUMENT THE RECIPIENT ACKNOWLEDGES AND AGREES THAT THIS DOCUMENT CANNOT BE USED IN ANY MANNER ADVERSE TO THE INTEREST OF EATON AND THAT NO PORTION OF THIS DRAWING MAY BE COPIED OR OTHERWISE REPRODUCED WITHOUT THE PRIOR WRITTEN CONSENT OF EATON, IN THE CASE OF CONFLICTING CONTRACTUAL PROVISIONS, THIS NOTICE SHALL GOVERN THE STATUS OF THIS DOCUMENT. 2018 EATON CORPORATION - ALL RIGHTS RESERVED.					
PART NO.	SEE TABLE						