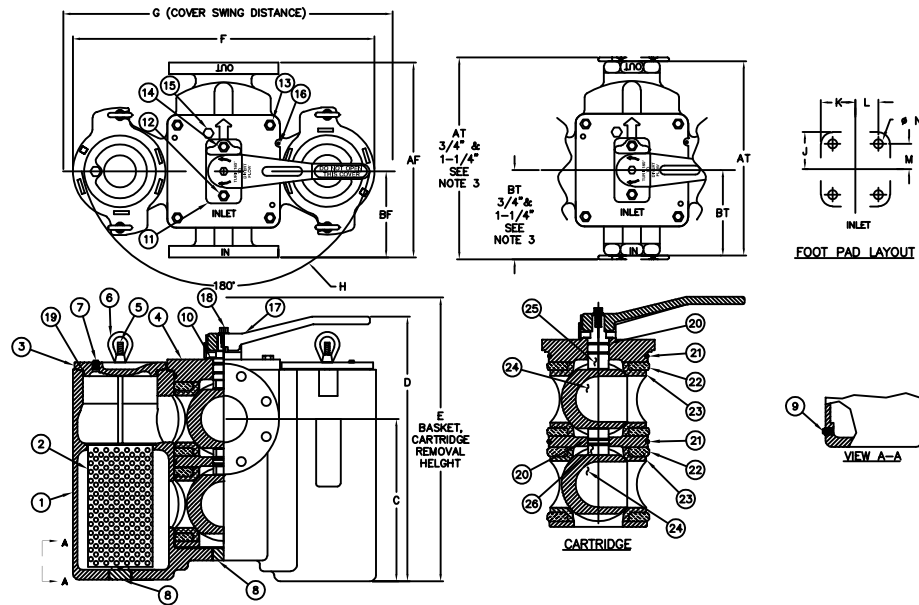


PIPE SIZE (NOMINAL) IN. MM.	DIMENSIONS															STRAINER WEIGHT LBS. KGS.	STRAINER PART NO.
	AF±0.13 IN. MM.	BF IN. MM.	AT±0.13 IN. MM.	BT IN. MM.	C IN. MM.	D IN. MM.	E IN. MM.	F IN. MM.	G IN. MM.	H IN. MM.	J IN. MM.	K IN. MM.	L IN. MM.	M IN. MM.	N IN. MM.		
3/4 (20)			6.13 / 156	2.84 / 72	5.00 / 127	10.50 / 267	13.38 / 340	10.50 / 268	16.50 / 419	7.88 / 200	3.25 / 83	2.13 / 54	1.63 / 41	2.75 / 70	3/8 (10)	41 / 19	ST053007BT33TS
1 (25)			5.50 / 140	2.53 / 64	5.00 / 127	10.50 / 267	13.38 / 340	10.50 / 268	16.50 / 419	7.88 / 200	3.25 / 83	2.13 / 54	1.63 / 41	2.75 / 70	3/8 (10)	39 / 18	ST053010BT33TS
1 (25)	6.88 / 175	3.19 / 81			5.00 / 127	10.50 / 267	13.38 / 340	10.50 / 268	16.50 / 419	7.88 / 200	3.25 / 83	2.13 / 54	1.63 / 41	2.75 / 70	3/8 (10)	45 / 20	ST053010BR33TS
1-1/4 (32)			8.75 / 222	3.75 / 95	7.00 / 178	12.75 / 324	17.00 / 432	13.25 / 330	19.88 / 505	7.88 / 200	3.25 / 83	2.13 / 54	1.63 / 41	2.75 / 70	3/8 (10)	89 / 40	ST053012BT33TS
1-1/2 (40)			7.50 / 190	3.25 / 83	7.00 / 178	12.75 / 324	17.00 / 432	13.25 / 330	19.88 / 505	7.88 / 200	3.25 / 83	2.13 / 54	1.63 / 41	2.75 / 70	3/8 (10)	86 / 39	ST053015BT33TS
1-1/2 (40)	9.38 / 238	4.31 / 109			7.00 / 178	12.75 / 324	17.00 / 432	13.25 / 330	19.88 / 505	7.88 / 200	3.25 / 83	2.13 / 54	1.63 / 41	2.75 / 70	3/8 (10)	97 / 44	ST053015BR33TS
2 (50)			10.00 / 254	4.50 / 114	8.38 / 213	15.50 / 394	21.75 / 552	17.38 / 441	26.25 / 667	10.63 / 270	4.69 / 119	2.50 / 64	1.81 / 46	4.00 / 102	5/8 (16)	168 / 77	ST053020BT33TS
2 (50)	10.63 / 270	4.63 / 117			8.38 / 213	15.50 / 394	21.75 / 552	17.38 / 441	26.25 / 667	10.63 / 270	4.69 / 119	2.50 / 64	1.81 / 46	4.00 / 102	5/8 (16)	179 / 81	ST053020BR33TS
2-1/2 (65)			10.00 / 254	4.50 / 114	8.38 / 213	15.50 / 394	21.75 / 552	17.38 / 441	26.25 / 667	10.63 / 270	4.69 / 119	2.50 / 64	1.81 / 46	4.00 / 102	5/8 (16)	168 / 77	ST053025BT33TS
2-1/2 (65)	10.75 / 273	4.69 / 119			8.38 / 213	15.50 / 394	21.75 / 552	17.38 / 441	26.25 / 667	10.63 / 270	4.69 / 119	2.50 / 64	1.81 / 46	4.00 / 102	5/8 (16)	197 / 89	ST053025BR33TS
3 (80)	13.50 / 343	5.93 / 151			8.88 / 226	18.00 / 457	26.50 / 673	22.75 / 578	35.00 / 889	12.00 / 305	4.69 / 119	2.50 / 64	1.81 / 46	4.00 / 102	5/8 (16)	306 / 139	ST053030BR33TS
4 (100)	16.00 / 406	7.06 / 179			13.25 / 337	21.63 / 549	33.00 / 838	24.75 / 629	36.75 / 933	12.00 / 305	5.19 / 132	3.94 / 100	3.25 / 83	4.50 / 114	5/8 (16)	420 / 191	ST053040BR33TS



(\* - SPARES)

ITEM	QTY	PART NAME	MATERIAL		
25	26	1, 1	STEM	STAINLESS STEEL	
24	2		BALL	STAINLESS STEEL	
23*	4*		SEAT	TEFLON	
22*	4*		SEAL	BUNA-N	
19*	20*	21*	2* 4* 2*	O RING	BUNA-N
18	1		CAP SCREW	CARBON STEEL	
17	1		HANDLE	DUCTILE IRON/CARBON STEEL	
16	1		PIN	CARBON STEEL	
15	1		VENT VALVE	BRASS	
12 13 14	1 4 1		CAP SCREW	CARBON STEEL	
11	1		STEM RETAINER	STAINLESS STEEL	
10 *	1*		WASHER	STAINLESS STEEL	
7 8 9	2 3 2		PIPE PLUG	CARBON STEEL	
6	4		EYENUT	CARBON STEEL	
5	4		STUD	CARBON STEEL	
4	1		CARTRIDGE	CARBON STEEL, A216 WCB	
3	2		COVER	CARBON STEEL, A216 WCB	
2 *	2*		BASKET PERF. DIA. MESH SIZE	STAINLESS STEEL, 316	
1	1		BODY	CARBON STEEL, A216 WCB	
ITEM	QTY	PART NAME	MATERIAL		

PART LIST FOR:

DRAWN BY VA SCALE AS DRAWN RESTRICTION RESTRICTED SHEET 1 OF 1 PROJECTION THIRD ANGLE	<b>FATON</b> HYDRAULICS GROUP FILTRATION DIVISION GALESBURG, MASSACHUSETTS, USA • TINTON FALLS, NEW JERSEY, USA TITLE MODEL 53" BTX" - DUPLEX STRAINER ASME CLASS 150 RF FLANGE & NPT SIZES 3/4" THROUGH 4" CARBON STEEL DATE 8/16/99 SIZE B DWG FILENAME SD053083 REV L
CUSTOMER INFO NAME P.O. NO. TAG NO. S.O. NO. PART NO.	DATE 8/16/99 SIZE B DWG FILENAME SD053083 REV L

REV	DESCRIPTION	BY	ECO	DATE
L	UPDATED TITLE BLOCK	S. PATL	0112361	7/27/15
K	NEW RELEASE	VA	FO03	01/03/08

- NOTE:
1. INLET/OUTLET CONNECTIONS PER ASME STANDARDS.
  2. MAX. WORKING PRESSURE: 200 PSI @ 150° F (13.8 BAR @65.5° C)
  3. BUSHING USED FOR 3/4" & 1-1/4" CONNECTIONS.