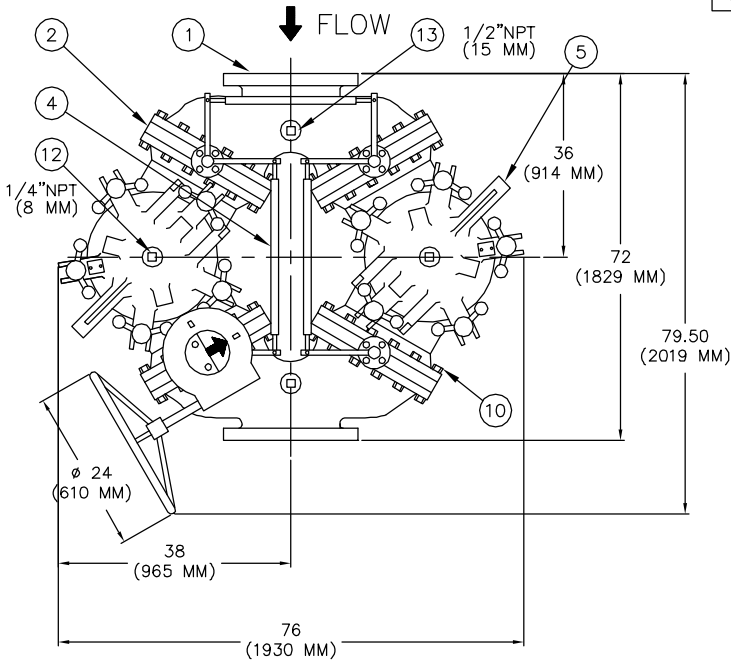
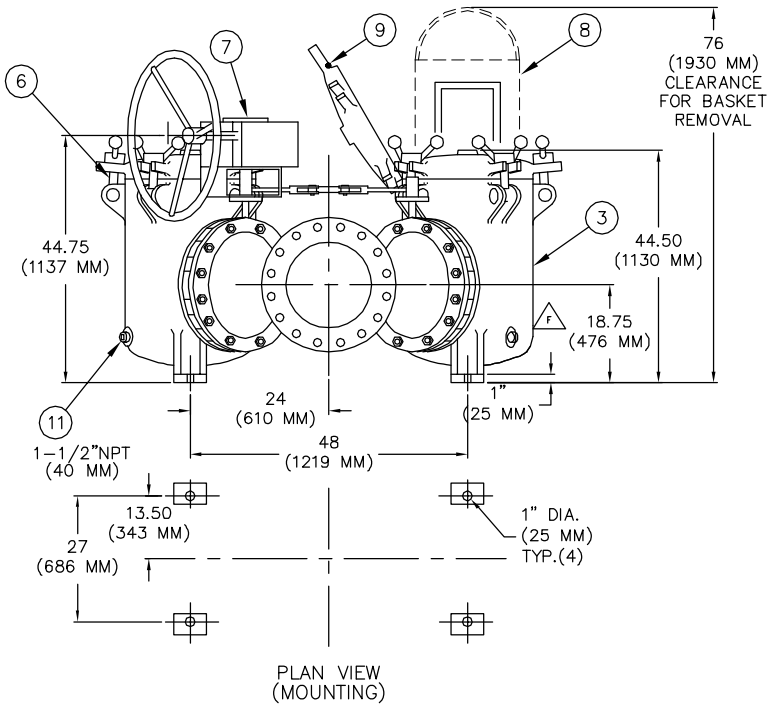


| REVISIONS |                     |          |         |           |
|-----------|---------------------|----------|---------|-----------|
| REV       | DESCRIPTION         | BY       | ECO     | DATE      |
| D         | NEW RELEASE         | FM       | 0058909 | 7/13/2011 |
| E         | UPDATED TITLE BLOCK | S. PATIL | 0112361 | 7/22/2015 |
| F         | ORIENTED DRAIN PLUG | SBB      | 166241  | 5/7/2018  |



NOTE:

1. INLET/OUTLET FLANGE PER ASME B16.1 CLASS 125 FF FLANGE
2. MAX. WORKING PRESS.: 150 PSI [10.3 BAR.] 100° F [37.8° C]
3. DIMENSIONS ARE IN INCHES / (MM)
4. WEIGHT: 4300 LBS. (1950 KG.)



CAUTION:

DUE TO THE TYPE OF CONSTRUCTION OF THIS STRAINER, ALL DIMENSIONS MAY VARY PLUS OR MINUS 1.50% OF THE CHARTED FIGURES. THE CUSTOMER IS ADVISED NOT TO FABRICATE ADJOINING PIPING UNTIL RECEIPT OF THE UNIT AT THE JOB SITE.

|      |                                   |                     |
|------|-----------------------------------|---------------------|
| 13   | PIPE PLUG (GAGE)                  | IRON                |
| 12   | PIPE PLUG (VENT)                  | IRON                |
| 11   | PIPE PLUG (DRAIN)                 | IRON                |
| 10   | BOLT/NUT                          | CARBON STEEL        |
| 9    | O-RING                            | BUNA-N              |
| 8    | BASKET<br>PERF. DIA.<br>MESH SIZE |                     |
| 7    | GEAR OPERATOR                     | IRON                |
| 6    | SWING BOLTS                       | CARBON STEEL        |
| 5    | COVER                             | CAST IRON A126 CL.C |
| 4    | LINKAGE                           | STEEL               |
| 3    | BODY                              | CAST IRON A126 CL.C |
| 2    | BUTTERFLY VALVE                   | IRON / BUNA-N SEAL  |
| 1    | FLANGED Y                         | CAST IRON A126 CL.C |
| ITEM | DESCRIPTION                       | MATERIAL            |

PART LIST FOR:

|                           |
|---------------------------|
| DRAWN BY<br>FM            |
| SCALE<br>AS DRAWN         |
| RESTRICTION<br>RESTRICTED |
| SHEET<br>1 OF 1           |
| PROJECTION<br>THIRD ANGLE |



HYDRAULICS GROUP  
FILTRATION DIVISION  
GALESBURG, MICHIGAN, USA • TINTON FALLS, NEW JERSEY, USA

|   |           |                          |          |
|---|-----------|--------------------------|----------|
| TITLE<br>MODEL 52 DUPLEX STRAINER 125# FLAT FACE<br>FLANGE SIZE 14" CAST IRON |           |                          |          |
| DATE<br>3/14/94   | SIZE<br>A | DWG FILENAME<br>SD052102 | REV<br>F |

EATON CORPORATION - CONFIDENTIAL AND PROPRIETARY NOTICE TO PERSONS RECEIVING THIS DRAWING AND/OR TECHNICAL INFORMATION  
THIS DOCUMENT, INCLUDING THE DRAWING AND INFORMATION CONTAINED THEREON IS CONFIDENTIAL AND IS THE EXCLUSIVE PROPERTY OF EATON AT ANY TIME. BY TAKING THE POSSESSION OF THIS DOCUMENT THE RECIPIENT ACKNOWLEDGES AND AGREES THAT THIS DOCUMENT CANNOT BE USED IN ANY MANNER ADVERSE TO THE INTEREST OF EATON AND THAT NO PORTION OF THIS DRAWING MAY BE COPIED OR OTHERWISE REPRODUCED WITHOUT THE PRIOR WRITTEN CONSENT OF EATON, IN THE CASE OF CONFLICTING CONTRACTUAL PROVISIONS, THIS NOTICE SHALL GOVERN THE STATUS OF THIS DOCUMENT.  
2018 EATON CORPORATION - ALL RIGHTS RESERVED.

| CUSTOMER INFO |               |
|---------------|---------------|
| NAME          |               |
| P.O. NO.      |               |
| TAG NO.       |               |
| S.O. NO.      |               |
| PART NO.      | ST052140AF40C |