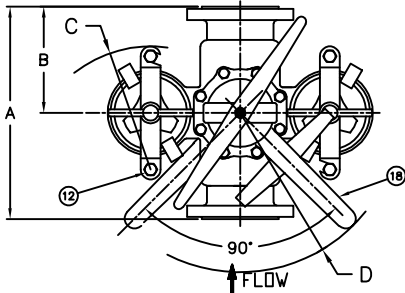
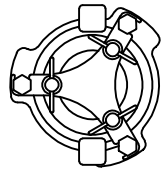
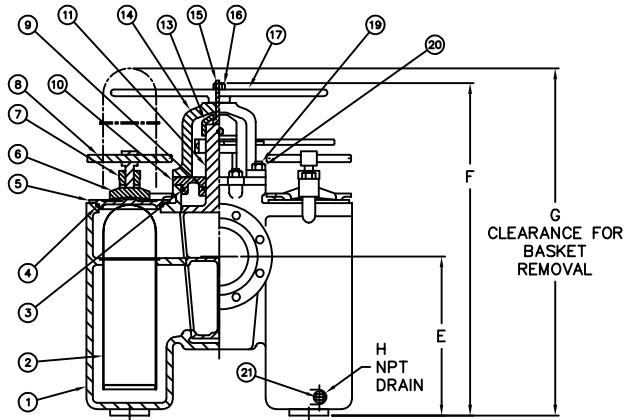


PIPE SIZE (NOMINAL)	DIMENSIONS												WEIGHT		PART NO.										
	A		B		C		D		E		F		G			H (NOM.)		J		K		L		LBS.	KGS.
IN.	MM.	IN.	MM.	IN.	MM.	IN.	MM.	IN.	MM.	IN.	MM.	IN.	MM.	IN.	MM.	IN.	MM.	IN.	MM.	IN.	MM.				
6" (150mm)	22.00	/ 559	12.88	/ 327	11.75	/ 298	19.75	/ 502	18.50	/ 470	35.00	/ 889	42.00	/ 1067	3/8	/ 10	20.75	/ 527	0.63	/ 16	12.50	/ 318	580	/ 263	ST0500600R32C
8" (200mm)	25.00	/ 635	14.00	/ 356	--	/ --	28.00	/ 711	22.44	/ 570	50.00	/ 1270	56.00	/ 1422	1/2	/ 15	30.75	/ 781	0.88	/ 22	17.00	/ 432	1610	/ 730	ST0500800R32C

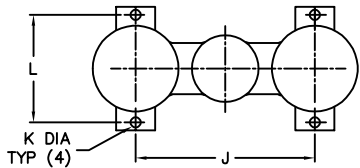


NOTES:

1. INLET/OUTLET FLANGE CONNECTIONS PER ASME B16.5.
2. SIZE 6" USE COVER CLAMP (ITEM 6).
3. MAX. WORKING PRESSURE: 6" SIZE.  
200 PSI @ 100°F ( 13.8 BAR @ 37.8°C )  
MAX. WORKING PRESSURE: 8" SIZE.  
150 PSI @ 100°F ( 10.3 BAR @ 37.8°C )



8" COVER & YOKE DETAIL



REV	DESCRIPTION	BY	DATE
C	UPDATED TITLE BLOCK	S. PATIL	0112361 7/22/2015
-	NEW RELEASE	VA	D507 11/1/2005

REVISIONS

CUSTOMER INFO	
NAME	
P.O. NO.	
TAG NO.	
S.O. NO.	
PART NO.	

ITEM	PART NUMBER	MATERIAL
21	DRAIN PLUG	CARBON STEEL
20	BONNET STUD NUT	CARBON STEEL
19	BONNET STUD	ALLOY STEEL
18	TURNING HANDLE	DUCTILE IRON
17	LIFTING HANDLE	DUCTILE IRON
16	JACKSCREW NUT	CARBON STEEL
15	JACKSCREW	STEEL
14	JACK BONNET	DUCTILE IRON
13	JACK COLLAR	DUCTILE IRON
12	YOKE STUD	STEEL
11	DIVERTER PLUG	SSTL ASTM A351 GR. CF8M
10	BONNET	CSTL ASTM A216 GR. WCB
9	O-RING	BUNA-N
8	YOKE SCREW AND PIN ASSY	CARBON STEEL
7	YOKE	DUCTILE IRON
6	COVER CLAMP	DUCTILE IRON
5	COVER	CSTL ASTM A216 GR. WCB
4	O-RING	BUNA-N
3	O-RING (SIZE - 6") GASKET (SIZE - 8")	BUNA-N NON-ASBESTOS
2	BASKET PERF. DIA. MESH	
1	BODY	CSTL ASTM A216 GR. WCB

PART LIST FOR:

DRAWN BY VA		HYDRAULICS GROUP	
SCALE AS DRAWN		FILTRATION DIVISION	
RESTRICTION RESTRICTED		GALESBURG, MICHIGAN, USA • TINTON FALLS, NEW JERSEY, USA	
SHEET 1 OF 1		TITLE MODEL 50 DUPLEX STRAINER 150# RAISED FACE FLANGE SIZES 6" & 8" CS BODY / SS D.PLUG	
PROJECTION THIRD ANGLE	DATE 7/11/02	SIZE A	DWG FILENAME SD051096
			REV C

EATON CORPORATION - CONFIDENTIAL AND PROPRIETARY NOTICE TO PERSONS RECEIVING THIS DRAWING AND/OR TECHNICAL INFORMATION  
THIS DOCUMENT, INCLUDING THE DESIGN AND INFORMATION CONTAINED HEREIN IS CONFIDENTIAL AND IS THE EXCLUSIVE PROPERTY OF EATON AT ALL TIMES. BY TRANSFER OF POSSESSION OF THIS DOCUMENT THE RECIPIENT ACKNOWLEDGES AND AGREES THAT THIS DOCUMENT CANNOT BE USED IN ANY MANNER IN VIOLATION OF THE INTERESTS OF EATON AND THAT NO PORTION OF THIS DRAWING MAY BE COPIED OR OTHERWISE REPRODUCED WITHOUT THE PRIOR WRITTEN CONSENT OF EATON. IN THE CASE OF CONTRACTING ORGANIZATION, PROVISIONS OF THIS NOTICE SHALL GOVERN THE STATUS OF THIS DOCUMENT.  
©2005 EATON CORPORATION - ALL RIGHTS RESERVED.